

ROUTE	SECTION	COUNTY	TOTAL SHEETS	SHEET NO.
T.R. 139	02-02110-00-BR	EFFINGHAM	13	1
BISHOP ROAD DISTRICT		ILLINOIS	CONTRACT NO. 95422	

STATE OF ILLINOIS
DEPARTMENT OF TRANSPORTATION
DIVISION OF HIGHWAYS
PLANS FOR PROPOSED
BRIDGE REPLACEMENT & REHABILITATION PROGRAM

Joint Utility Locating Information for Excavators

JULIE 1-800-892-0123

SECTION 02-02110-00-BR EFFINGHAM COUNTY

PROJECT BROS-049(146)

JOB NO. C-97-007-05

T.R. 139

INDEX OF SHEETS

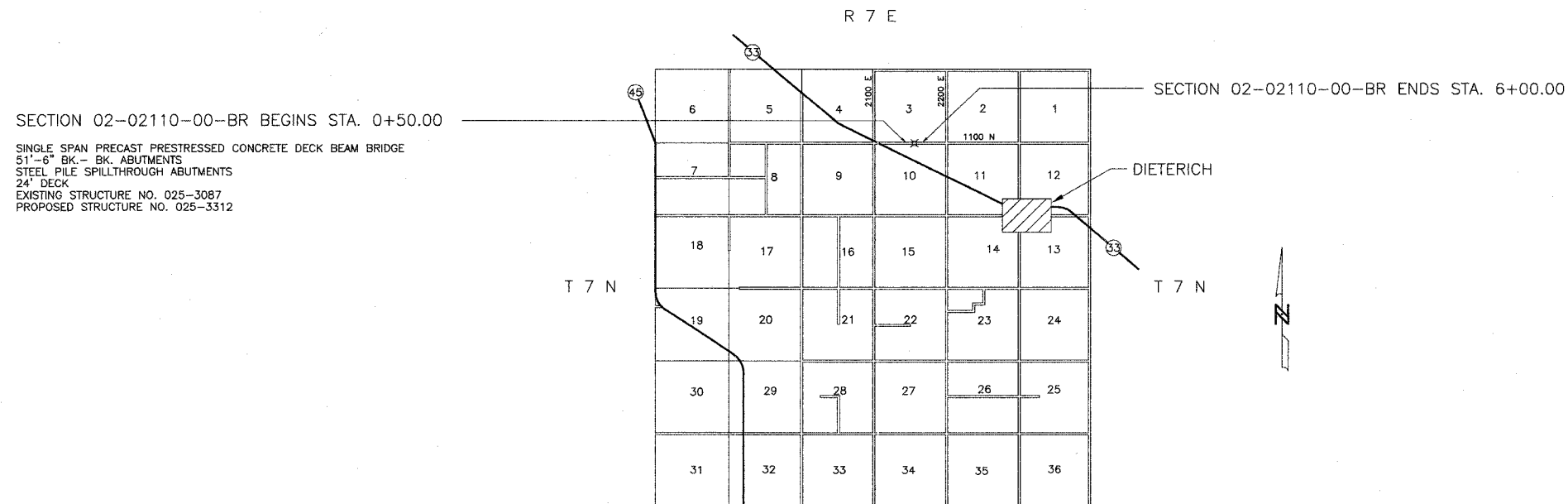
SHEET	ITEM
1	COVER SHEET
2	SUMMARY OF QUANTITIES
3	ROADWAY PLAN AND PROFILE
4	GENERAL PLAN AND ELEVATION
5	STANDARD CS-2421-50
6	STANDARD CB-2421-36
7	STANDARD CB-2421-48
8	STANDARD CA-2421-10
9	STANDARD CR-TS1
10	STANDARD CN
11	STANDARD CX-1
12-13	CROSS SECTIONS

PLAN	0 50' 100'
PROFILE HOR.	0 50' 100'
PROFILE VERT.	0 5' 10'
CROSS SECTIONS	
HOR.	0 5' 10'
VERT.	0 5' 10'

THE ACCEPTANCE OF THIS PROJECT IS BASED ON THE MINIMUM DESIGN CRITERIA FOR A FEDERAL-AID B.R.R.P. TYPE IMPROVEMENT.

Maureen Kaxot
DISTRICT ENGINEER OF LOCAL ROADS AND STREETS

STANDARD DRAWINGS
STANDARD 000001-04
STANDARD 280001-02
STANDARD 702001-05
STANDARD BLR 21-6
STANDARD BLR 22-4



SINGLE SPAN PRECAST PRESTRESSED CONCRETE DECK BEAM BRIDGE
51'-6" BK.-BK. ABUTMENTS
STEEL PILE SPILLTHROUGH ABUTMENTS
24' DECK
EXISTING STRUCTURE NO. 025-3087
PROPOSED STRUCTURE NO. 025-3312

APPROVED *[Signature]* DATE 02/09/05
COUNTY ENGINEER

Robert A. Charleston
Ill. Reg. Prof. Eng. #29178
2/8/05
Lic. Expires 11/30/05

CHARLESTON ENGINEERING INC.
105 N. KITCHELL
P.O. BOX 397
OLNEY, ILLINOIS 62450
PH. 618-392-0736



STATE OF ILLINOIS
DEPARTMENT OF TRANSPORTATION
DIVISION OF HIGHWAYS

PASSED 4/1 2005
Maureen Kaxot
DIST. ENGINEER OF LOCAL ROADS

APPROVED 4/1 2005
Christine M. Reed
DEPUTY DIRECTOR OF HIGHWAYS
REGION FOUR ENGINEER

CONTRACT NO. 95422

LOCAL ROAD
ADT = 100
DESIGN SPEED = 30 M.P.H.

NET LENGTH SECTION 02-02110-00-BR = 550.00 Ft. = 0.104 Mi.