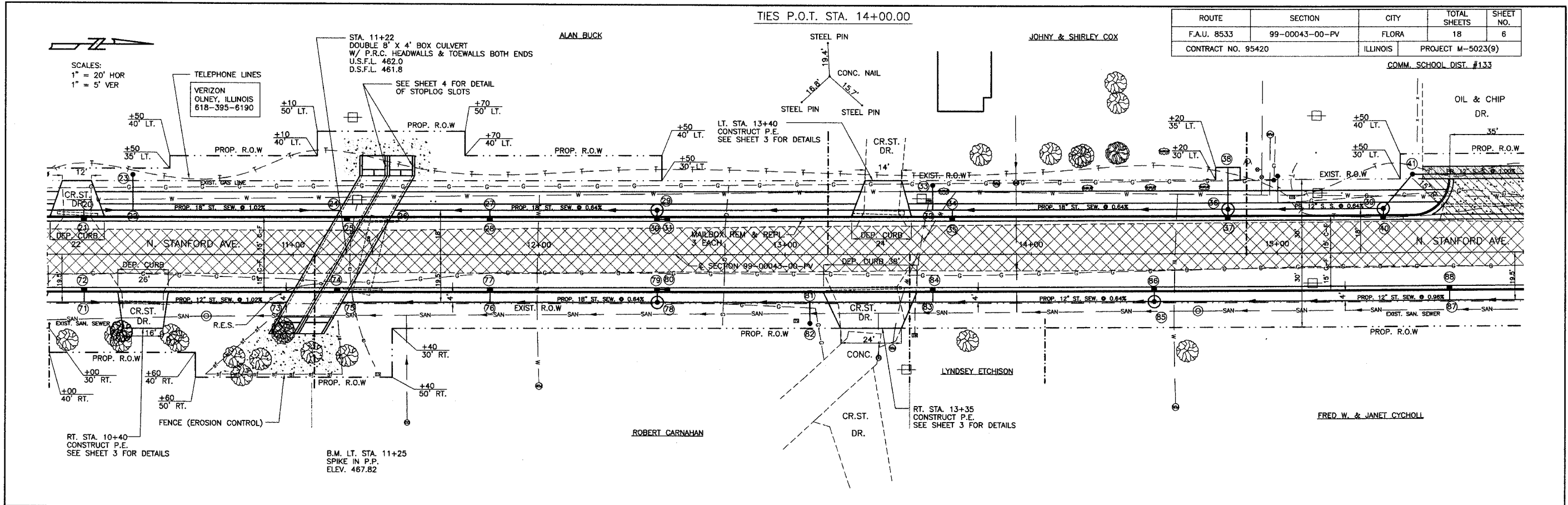


TIES P.O.T. STA. 14+00.00

ROUTE	SECTION	CITY	TOTAL SHEETS	SHEET NO.
F.A.U. 8533	99-00043-00-PV	FLORA	18	6
CONTRACT NO. 95420		ILLINOIS	PROJECT M-5023(9)	

COMM. SCHOOL DIST. #133



485	BIT CONC. SUPERPAVE. IL-19.C, N70	BINDER CSE., 19.0"	TON	192	P.C.C. DRIVEWAY PAV'T. 6"	SQ. YD.	51	AGG. BASE. CSE., TY.-B	TON	330	AGG. SURF. CSE., TY.-E	TON	5	COMB. CONC. CURB & GUTTER TYPE B-5.18	FOOT	1000
480	BIT CONC. SUPERPAVE. MIX "D", N90	SURFACE CSE., 19.0"	TON	242	RT. STA. 13+35 LT. STA. 13+40 LT. STA. 15+88	SQ. YD.	32 60	STA. 11+00 TO 16+00	TOTAL 362 TON	RT. STA. 13+35 LT. STA. 13+40	TON	5	STA. 11+00 TO 16+00 LT. STA. 15+56	FOOT	1023	
475			TOTAL 248 TON		MAILBOX REM. & REL.	EACH	3	VPI STA = 12+50.00 VPI EL = 467.75 CURVE LEN = 200.00		RT. STA. 10+65 LT. STA. 14+65	TON	1	STA. 11+00 TO 16+00	ACRE	0.35	
470										P.C.C. SIDEWALK 4"	SQ. FT.	2190	STA. 11+32	CU. YD.	70	
465																
460	PAINT PAV'T. MARKING LINE 4"		FOOT	125	PROCESSING SOIL-CEMENT BASE COURSE 8"	SQ. YD.	1500			PIPE CULVERT REMOVAL	FOOT	32	VPI STA = 14+50.00 VPI EL = 468.50 CURVE LEN = 200.00			
455	BIT. CONC. SURF. REM. (SPL)		SQ. YD.	1000	TREE REMOVAL (6 TO 15 UNITS DIA.)	UNIT DIA.	22	RT. STA. 10+80 TO 11+35		PREC. CONC. BOX CULV. 8' X 4'	FOOT	132	LT. & RT. STA. 11+25	TON	65	
450	BITUMINOUS SURFACE REMOVAL		SQ. YD.	125	TREE REMOVAL (OVER 15 UNITS DIA.)	UNIT DIA.	102	RT. STA. 10+80 TO 11+35		CEMENT	100 WT.	960	RT. STA. 11+11	EACH		
445																
440																

10+00 11+00 12+00 13+00 14+00 15+00 16+00