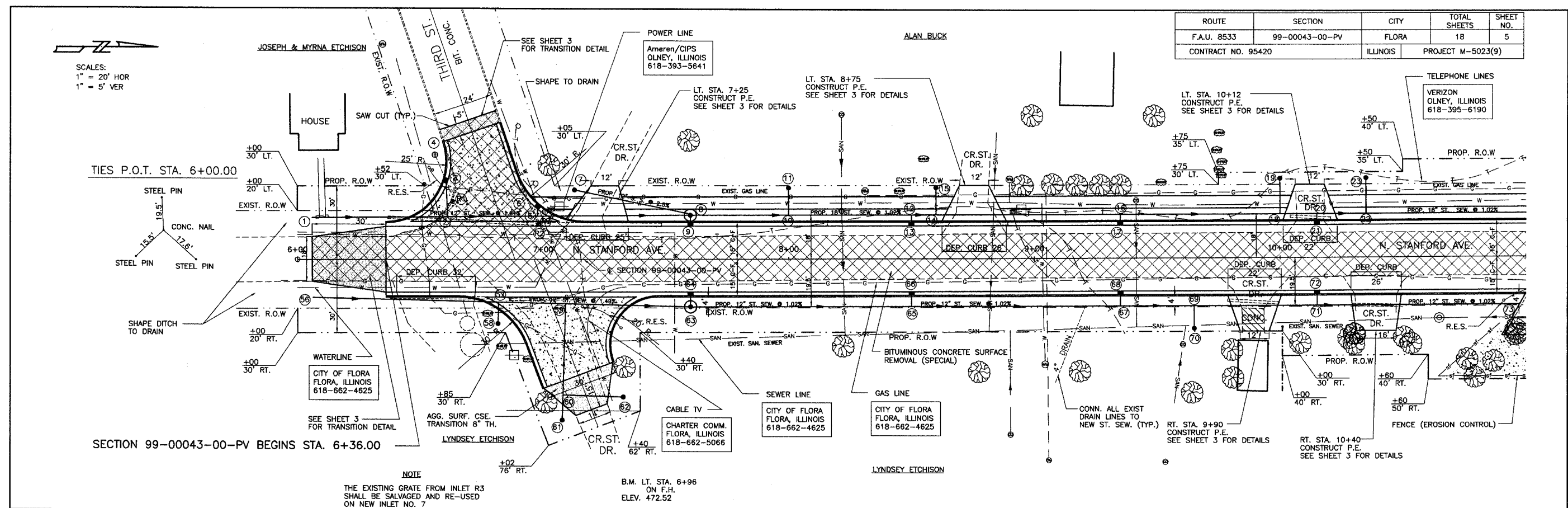


ROUTE	SECTION	CITY	TOTAL SHEETS	SHEET NO.
F.A.U. 8533	99-00043-00-PV	FLORA	18	5
CONTRACT NO. 95420		ILLINOIS	PROJECT M-5023(9)	

SCALES:  
1" = 20' HOR  
1" = 5' VER



NOTE  
THE EXISTING GRATE FROM INLET R3 SHALL BE SALVAGED AND RE-USED ON NEW INLET NO. 7

B.M. LT. STA. 6+96 ON F.H. ELEV. 472.52

485					SIDEWALK REMOVAL	SQ. FT.		AGG. SURF. CSE., TY.-B	TON	COMB. CONC. CURB & GUTTER	FOOT	485
480					PIPE CULVERT REMOVAL	FOOT				SEEDING CLASS 1 (SPL.)	ACRE	480
475	BIT. CONC. BINDER CSE., SUPERPAVE, IL-19.0, N70	TON										
470	BIT. CONC. SURFACE CSE., SUPERPAVE, MIX "D", N90	TON										
465												
460	MANHOLES TO BE ADJUSTED	EACH										
455	PAINT PAV'T. MARKING LINE 4"	FOOT										
450	DRIVEWAY PAVEMENT REMOVAL	SQ. YD.										
445												
440												

