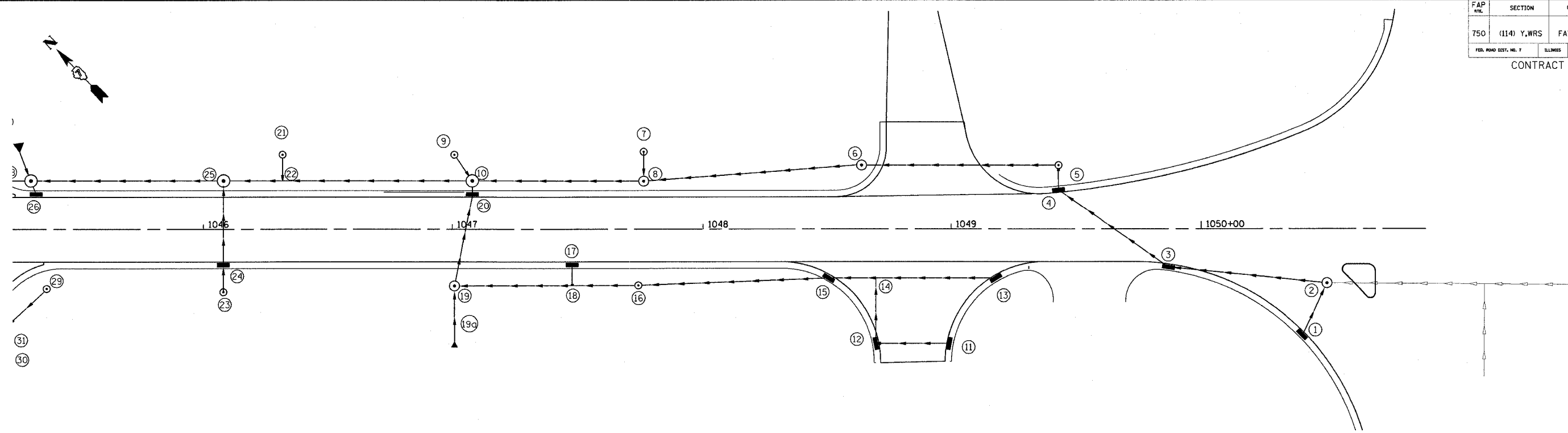


\$USER\$ \$DATE\$
 c:\projects\94962\d\03102pa.dgn
 REV:

FAP NO.	SECTION	COUNTY	TOTAL SHEETS	SHEET NO.
750	(114) Y,WRS	FAYETTE		22
FED. ROAD DIST. NO. 7	ILLINOIS	FED. AID PROJECT NO.		

CONTRACT NO. 94962



SCHEDULE OF DRAINAGE STRUCTURES

POINT	LOCATION	DESCRIPTION	LID/GRATE ELEVATION	INLET INVERT	INLET INVERT	INLET INVERT	OUTLET INVERT
1	42.13' RT 1050+40.60	INLET TY A TY 3 F&G	578.78				575.80 E
2	21.52' RT 1050+50.59	MAN TY A 4' TY 1 F&CL	579.15		575.60 S	576.18 E	575.50 W
3	15.12' RT 1049+87.13	INLET TY B TY 3 F&G	578.57			574.89 S	574.79 N
4	15.78' LT 1049+43.07	INLET TY B TY 3 F&G	577.82			574.76 S	574.66 W
5	25.69' LT 1049+43.07	INLET TY B TY 8 G	576.79			574.36 E	573.02 W
6	25.69' LT 1048+63.83	MAN TY A 4' TY 1 F&CL	576.89				570.07 S
7	31.15' LT 1047+76.48	INLET TY A TY 8 G	573.75				571.88 W
8	19.42' LT 1047+76.23	MAN TY A 4' TY 1 F&CL	575.61		572.61 E	571.98 N	571.37 S
9	30.00' LT 1047+00.80	INLET TY A TY 8 G	573.39				571.10 W
10	19.58' LT 1047+08.00	MAN TY A 6' TY 1 F&CL	575.07	571.31 E	571.20 N	571.29 S	
11	45.63' RT 1048+99.32	INLET TY A TY 3 F&G	576.88				574.41 W
12	45.62' RT 1048+69.63	INLET TY B TY 3 F&G	576.88			574.03 E	573.71 N
13	19.50' RT 1049+17.95	INLET TY A TY 3 F&G	576.41				573.94 W
14	19.50' RT 1048+69.63	RCP Tee 15" P 15" R					
15	19.50' RT 1048+50.75	INLET TY B TY 3 F&G	576.41			573.29 E	572.63 W
16	22.36' RT 1047+74.34	INLET TY B TY 8 G	574.62			571.90 E	571.80 W
17	14.17' RT 1047+47.97	INLET TY A TY 3 F&G	574.98				571.80 S
18	22.42' RT 1047+47.99	RCP Tee 15" P 15" R					
19	22.54' RT 1047+00.91	MAN TY A 4' TY 1 F&CL	575.04		572.31 S	571.59 E	571.49 N
19A	44.72' RT 1047+00.92	END SECTION 15"					573.44 N
20	14.17' LT 1047+08.00	INLET TY B TY 3 F&G	574.71			571.39 S	571.29 N
21	30.00' LT 1046+31.61	INLET TY A TY 8 G	573.55				571.87 S
22	19.58' LT 1046+31.61	RCP Tee 24" P 15" R					
23	25.00' RT 1046+07.97	INLET TY A TY 8 G	573.19				571.51 N
24	14.17' RT 1046+07.97	INLET TY B TY 3 F&G	574.26			571.45 S	571.35 N
25	19.58' LT 1046+07.97	MAN TY A 5' TY 1 F&CL	574.62		570.63 E	571.14 S	570.53 W

PIPE SCHEDULE

POINT TO POINT	STORM SEWERS, CLASS A, TYPE 1 15"	STORM SEWERS, CLASS A, TYPE 1 18"	STORM SEWERS, CLASS A, TYPE 1 24"	STORM SEWERS, CLASS A, TYPE 1 30"	STORM SEWERS, CLASS A, TYPE 1 36"	STORM SEWERS, RUBBER GASKET, CL A, TYPE 1 15"	STORM SEWERS, RUBBER GASKET, CL A, TYPE 1 18"	STORM SEWERS, RUBBER GASKET, CL A, TYPE 1 24"	STORM SEWERS, RUBBER GASKET, CL A, TYPE 1 30"	TRENCH BACKFILL
	FEET	FEET	FEET	FEET	FEET	FEET	FEET	FEET	FEET	CU YD
1 - 2	20.0									5.3
2 - 3						60.8				18.0
3 - 4	51.8									13.5
4 - 5	7.4									1.3
5 - 6							76.0			8.6
6 - 8							84.0			21.2
7 - 8	8.7									1.7
9 - 10	8.7									2.0
8 - 10		63.5								20.7
11 - 12	27.7									5.2
12 - 14						22.0				6.0
13 - 15						65.2				13.9
15 - 16						74.5				19.8
17 - 18						4.4				1.1
16 - 19						70.5				17.8
19A - 19						20.0				2.8
19 - 20						34.0				8.5
20 - 10	1.4									0.4
10 - 25							95.0			33.1
21 - 22	6.6									1.4
23 - 24						8.3				1.2
24 - 25	30.3									7.8
TOTALS	163	64	0	0	0	360	160	95	0	212

THE STATION AND OFFSET FOR TYPE 3 GRATES IS GIVEN FOR THE CENTER OF THE GRATE (NOT THE CENTER OF THE MANHOLE).
 THE STATION AND OFFSET FOR TYPE 1 AND TYPE 8 GRATES IS THE CENTER OF THE MANHOLE (NOT THE CENTER OF THE GRATE OR LID).
 THE ELEVATION FOR TYPE 1 FRAMES AND LIDS IS THE TOP OF THE CASTING.
 THE ELEVATION FOR TYPE 3 GRATES IS THE EDGE OF PAVEMENT ELEVATION.
 THE ELEVATION FOR TYPE 8 GRATES IS THE HORIZONTAL RIM OF THE CASTING.

REVISIONS	
NAME	DATE

ILLINOIS DEPARTMENT OF TRANSPORTATION

STORM SEWER

SCALE: VERT. _____
 HORIZ. _____

DATE _____ DRAWN BY _____
 CHECKED BY _____