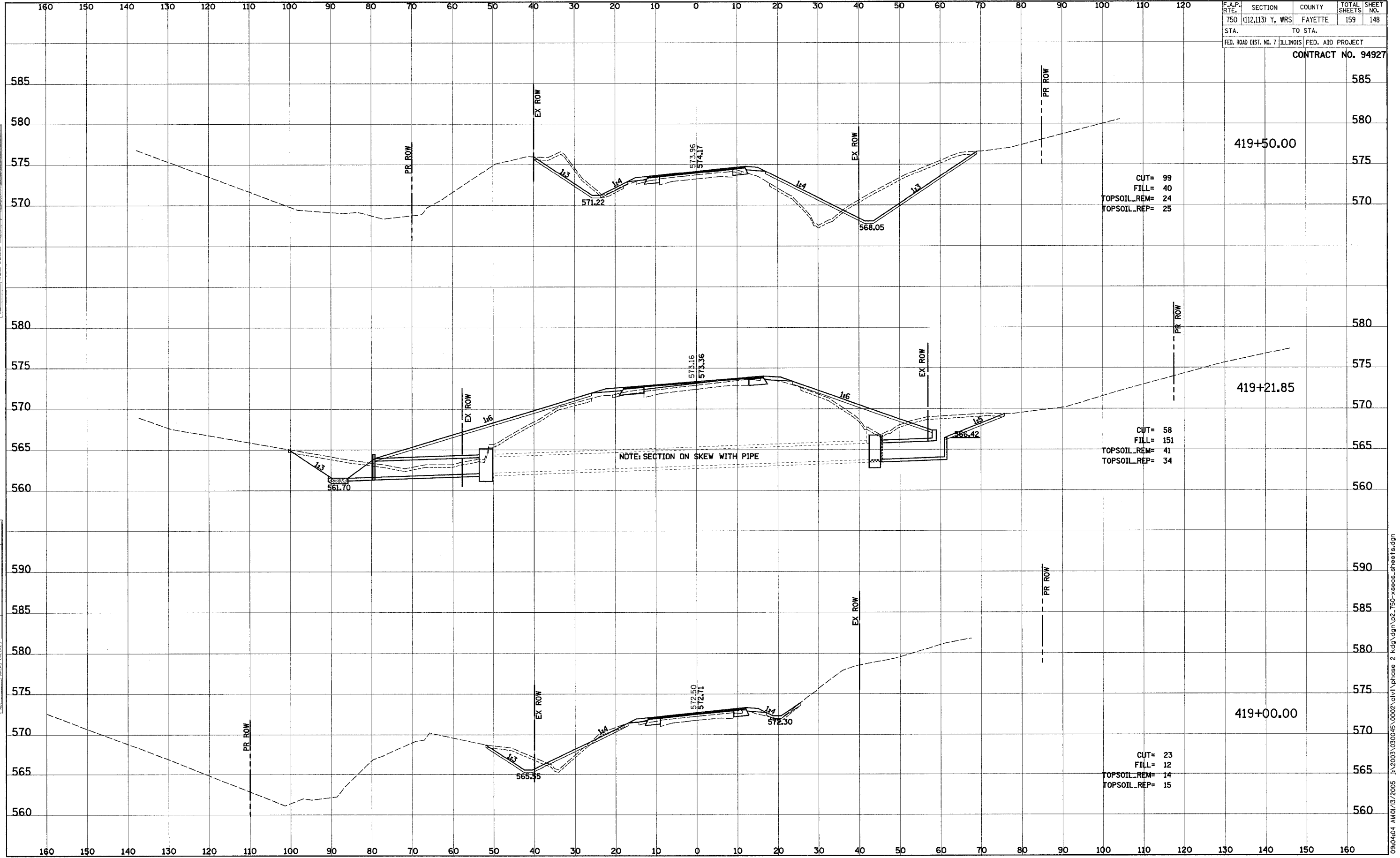


F.A.P. RTE.	SECTION	COUNTY	TOTAL SHEETS	SHEET NO.
750	(112,113) Y, WRS	FAYETTE	159	148
STA.	TO STA.			
FED. ROAD DIST. NO. 7 ILLINOIS FED. AID PROJECT				
CONTRACT NO. 94927				



BY	DATE
SUPERSED	
PLOTTED	
TEMPLATE	
NOTE BOOK	
AREAS CHECKED	

BY	DATE
SUPERSED	
PLOTTED	
TEMPLATE	
NOTE BOOK	
AREAS CHECKED	

09:04:04 AM 01/13/2005 J:\2003\030045\0002\civil\phase 2\kag\ dgn\p2_750-xeece_sheets.dgn