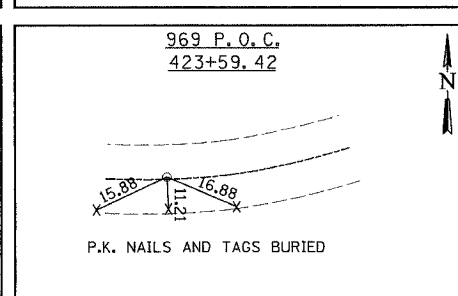
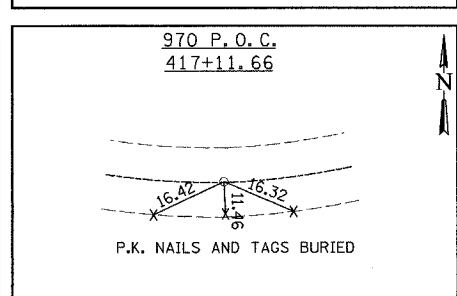
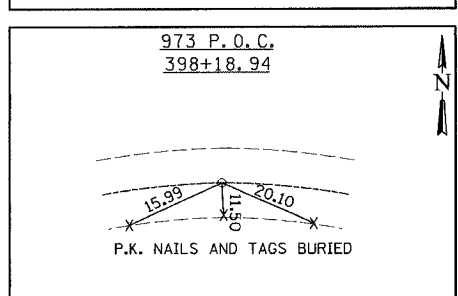
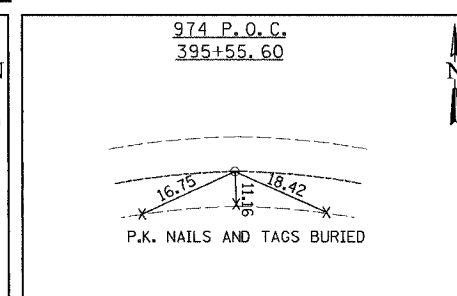
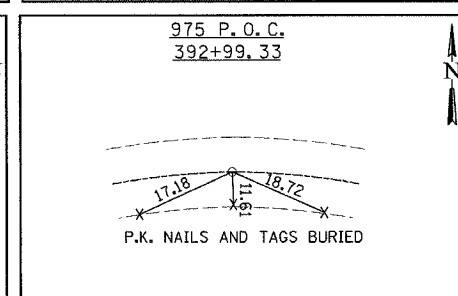
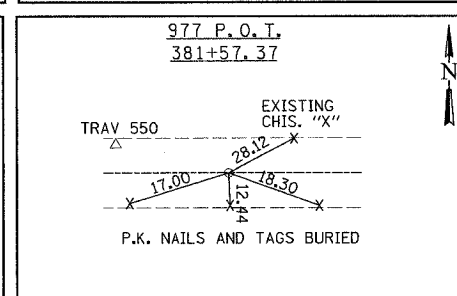
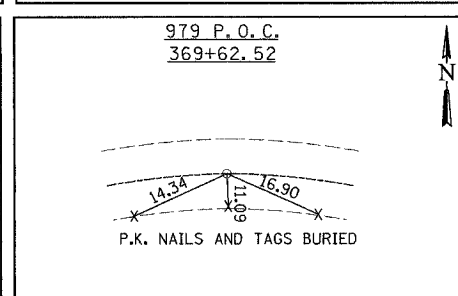
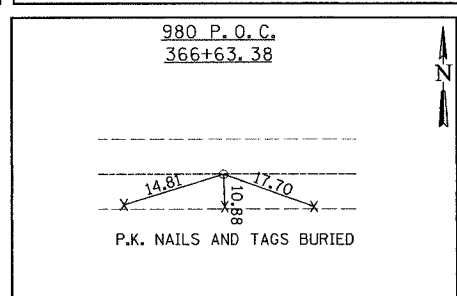
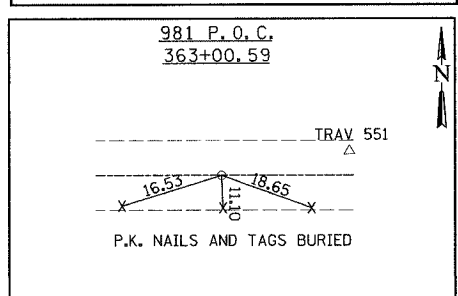
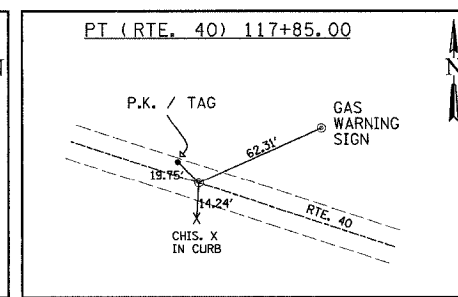
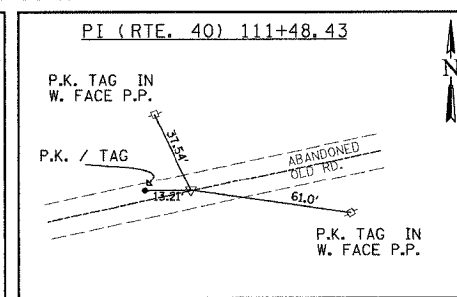
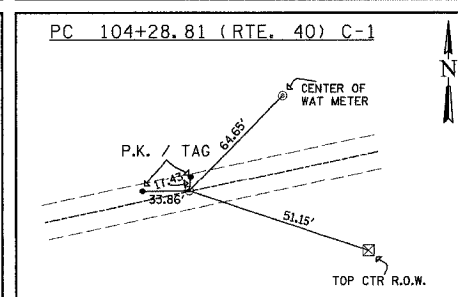
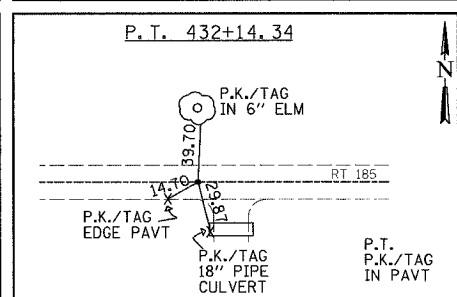
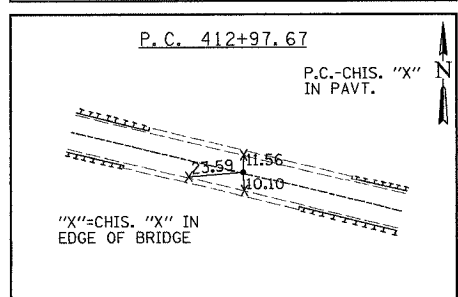
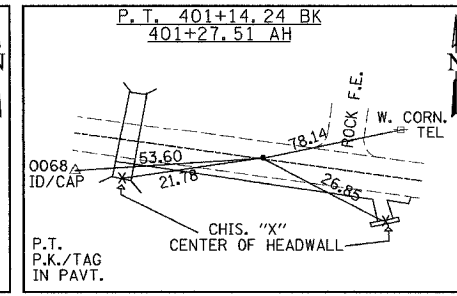
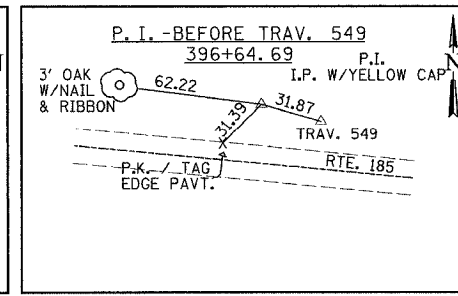
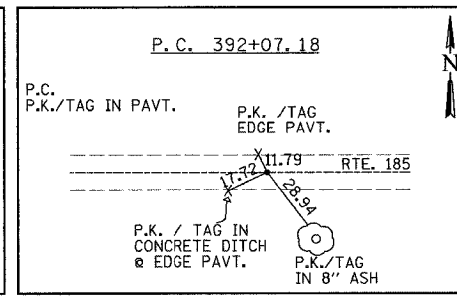
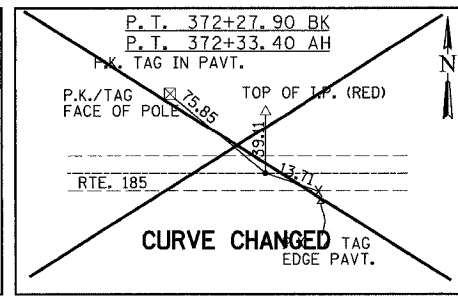
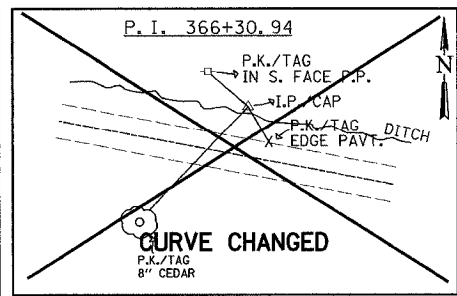
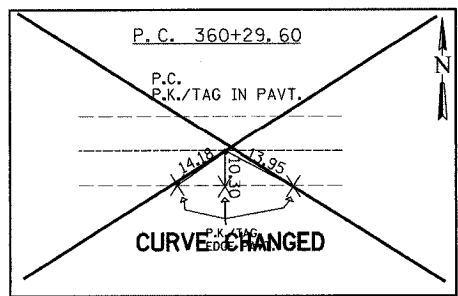
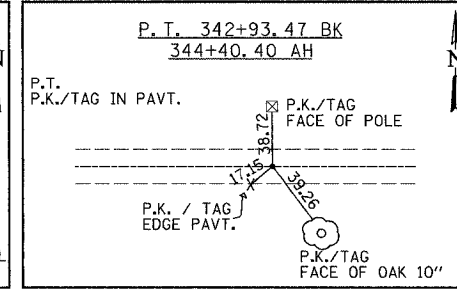
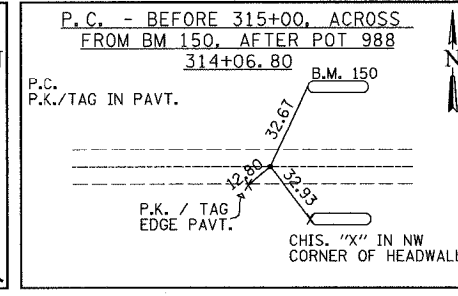
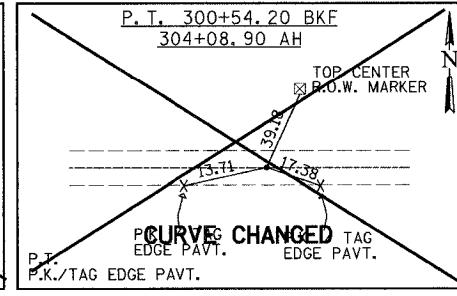
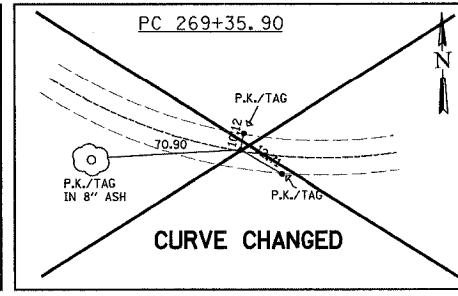
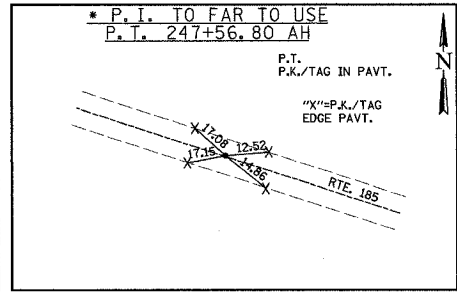
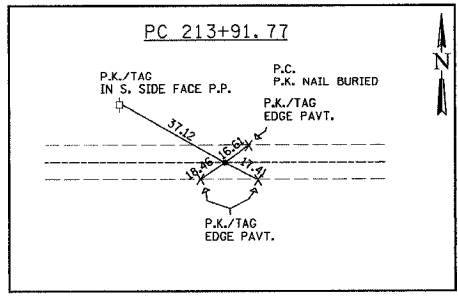


F.A.P. SECTION	COUNTY	TOTAL SHEETS	SHEET NO.
750 (112,113) Y, WRS	FAYETTE	159	13
STA.	TO STA.		
FED. ROAD DIST. NO. 7	ILLINOIS	FED. AID PROJECT	

CONTRACT NO. 94927

DATE	BY
DATE	BY
DATE	BY

DATE	BY
DATE	BY
DATE	BY



REVISIONS	
NAME	DATE

ILLINOIS DEPARTMENT OF TRANSPORTATION  
**HORIZONTAL CONTROL**  
**3-POINT TIES**  
 F.A.P. 750 (IL. RTE. 185)  
 SECTION 112,113 - FAYETTE CO.  
 SCALE: DATE JANUARY 19, 2005 DRAWN BY GRC CHECKED BY RCY

082413 AM 01/17/2005 J:\2003\030045\0002\civil\phase 2 ktd\cdm\p2\_116750.dgn