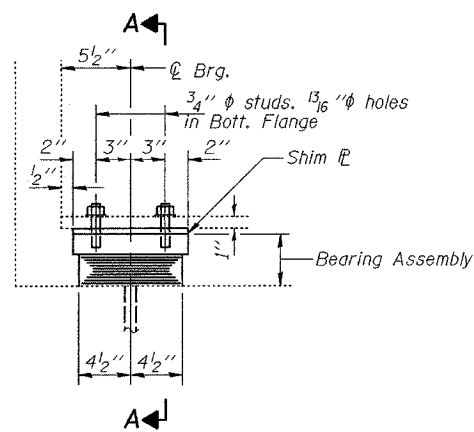


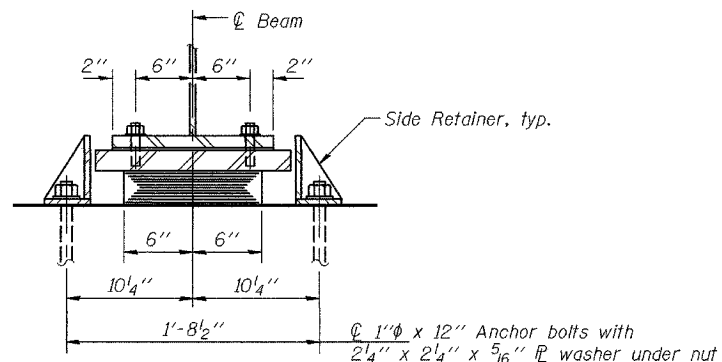
STATE OF ILLINOIS
DEPARTMENT OF TRANSPORTATION

ROUTE NO.	SECTION	COUNTY	SHEET	SHEET NO.
		JEFFERSON	40	4
FED. ROAD DIST. NO. 7	ILLINOIS	FED. AID PROJECT		

Contract No. 94905

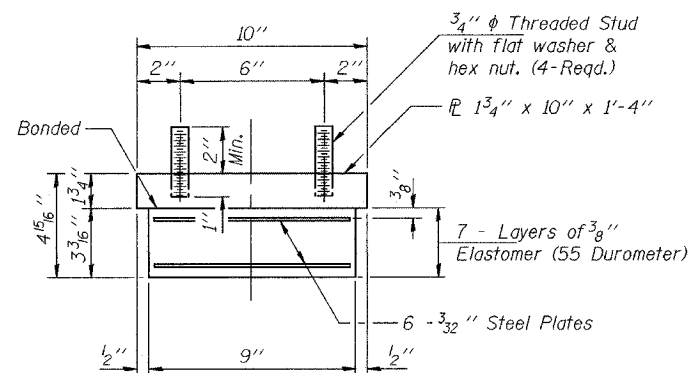


ELEVATION AT ABUT.



SECTION A-A

TYPE I ELASTOMERIC EXP. BRG.



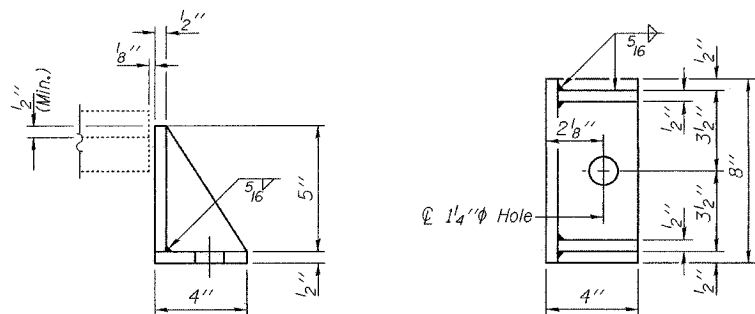
BEARING ASSEMBLY

Note:
Shim plates shall not be placed under Bearing Assembly.

BEAM REACTIONS

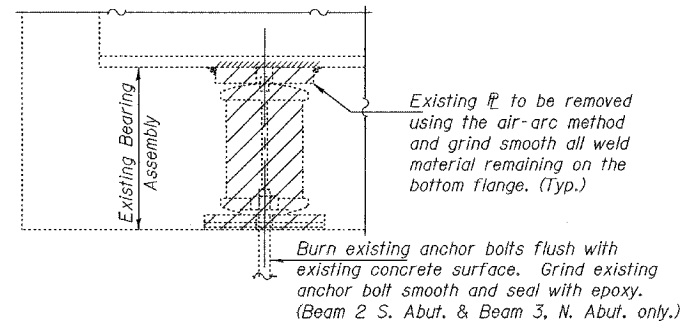
		Abutments
R _P	(K)	49.1
R _L	(K)	34.9
Imp.	(K)	7.8
R (Total)	(K)	91.8

Notes:
Diaphragm removal and reinstallation may be required to facilitate drilling holes. Cost included with Furnishing and Erecting Structural Steel.
New side retainers, shim plates, connection bolts, and anchor bolts are included with Furnishing and Erecting Structural Steel.
See Sheet 3 of 4 for Anchor Bolt installation.
Prior to ordering any material, the Contractor shall verify in the field all bearing height and shim thickness dimensions.
Min. jack capacity = 55 Tons.



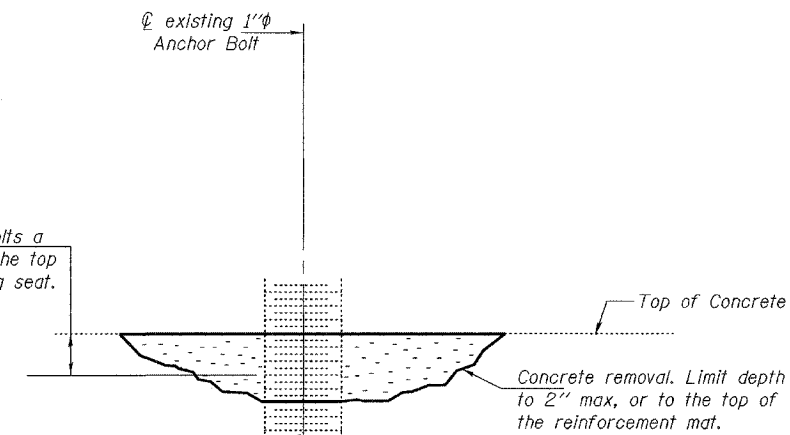
SIDE RETAINER

Equivalent rolled angle with stiffeners will be allowed in lieu of welded plates.



EXISTING BEARING REMOVAL DETAIL

Cost included with Jacking and Cribbing.



ANCHOR BOLT REMOVAL DETAIL

Typical except as noted.
Cost included with Jacking and Cribbing.

BILL OF MATERIAL

Item	Unit	Total
Elastomeric Bearing Assembly Type I	Each	8
Jacking and Cribbing	LS	1
Furnishing and Erecting Structural Steel	Pound	310

DESIGNED	ATH
CHECKED	VHV
DRAWN	baiva
CHECKED	ATH VHV

APRIL 13, 2005
EXAMINED *John A. Morris*
ENGINEER OF STRUCTURAL SERVICES
PASSED *Ralph E. Anderson*
ENGINEER OF BRIDGES AND STRUCTURES

REPAIR DETAILS
TR 206 OVER FAI 64
JEFFERSON COUNTY
SN 041-0080