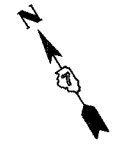


teasleyck
 3/31/2005
 c:\projects\94905d\04201pa.dgn
 PS 7



FAI RTE.	SECTION	COUNTY	TOTAL SHEETS	SHEET NO.
64	(41-71RS-1	JEFFERSON	48	21
FED. ROAD DIST. NO. 7		ILLINOIS	FED. AID PROJECT NO.	
CONTRACT NO. 94905				

EXIST. CURVE CH22-2
 PI STA. = 55+80.43
 $\Delta = 45^\circ 00' 01''$ (LT)
 D = $7^\circ 30' 00''$
 R = 763.94'
 T = 316.44'
 L = 600.00'
 E = 62.94'
 e = -----
 T.R. = -----
 S.E. RUN = -----
 P.C. STA. = 52+63.99
 P.T. STA. = 58+63.99



EXIST. CURVE CH22-1
 PI STA. = 44+50.78
 $\Delta = 17^\circ 43' 31''$ (RT)
 D = $7^\circ 30' 00''$
 R = 763.94'
 T = 119.12'
 L = 236.34'
 E = 9.23'
 e = -----
 T.R. = -----
 S.E. RUN = -----
 P.C. STA. = 43+31.66
 P.T. STA. = 45+68.00

REVISIONS	
NAME	DATE

ILLINOIS DEPARTMENT OF TRANSPORTATION
STA. 2245 + 00
TO
STA. 2275 + 00
 SCALE: VERT. _____
 HORIZ. _____
 DATE _____
 DRAWN BY _____
 CHECKED BY _____