

T 8 N-R 6 E 3rd P.M. DOUGLAS TWP

F.A.P. RTE.	SECTION	COUNTY	TOTAL SHEETS	SHEET NO.
774		EFFINGHAM	273	273
FED. ROAD DIST. NO. 7		ILLINOIS	FED. AID PROJECT	
* 107WRS-1, 107BY, 107BY-1, 107B-2 CONTRACT NO. 94827				

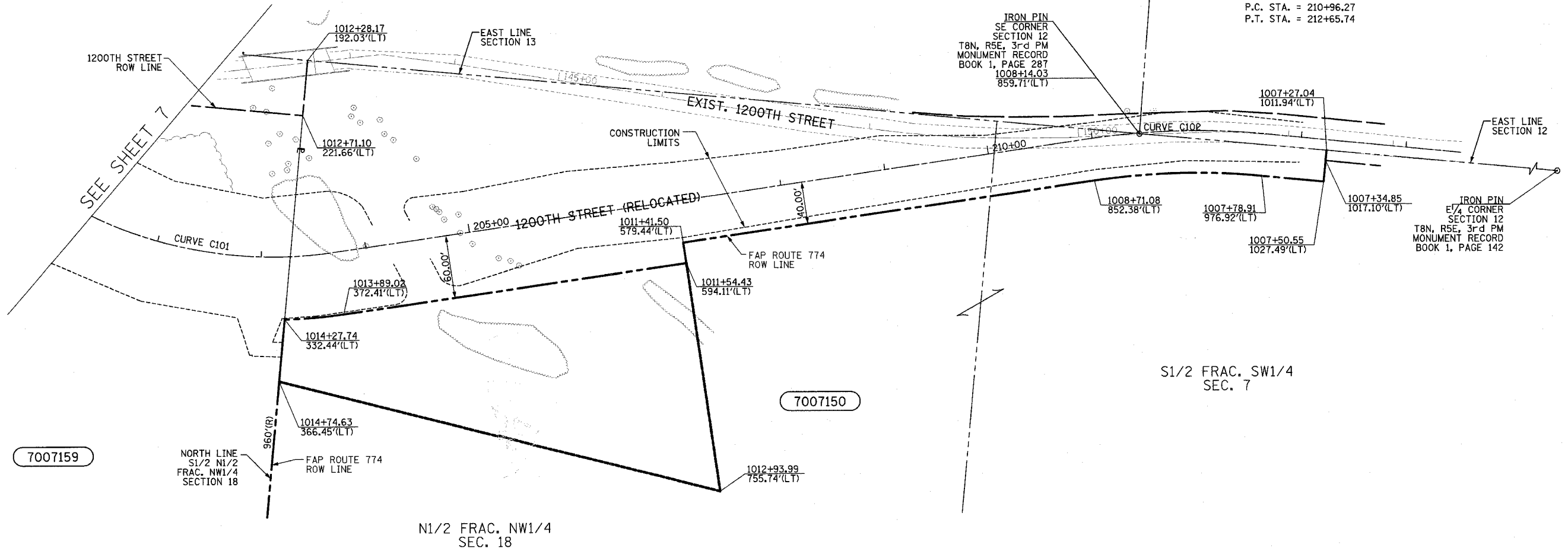
SHEET NO. 10
10 SHEETS

PROP. CURVE C101
RELOCATED 1200TH STREET
PI STA. = 202+54.90 =
STA. 1014+39.51, 246.44'(LT)
FAP ROUTE 774
Δ = 34° 00' 01" (LT)
D = 14° 19' 26"
R = 400.00'
T = 122.29'
L = 237.37'
E = 18.28'
e = N/C
P.C. STA. = 201+32.60
P.T. STA. = 203+69.97

PROP. CURVE C102
RELOCATED 1200TH STREET
PI STA. = 211+81.42 =
STA. 1007+88.51, 888.39'(LT)
FAP ROUTE 774
Δ = 13° 52' 16" (RT)
D = 8° 11' 06"
R = 700.00'
T = 85.10'
L = 169.47'
E = 5.16'
e = N/C
P.C. STA. = 210+96.27
P.T. STA. = 212+65.74



1 2 3 4 5 6 7 8 9
10 11 12 13 14 15 16 17 18
19 20 21 22 23 24 25 26 27
28 29 30 31 32 33 34 35 36
37 38 39 40 41 42 43 44 45
46 47 48 49 50 51 52 53 54
55 56 57 58 59 60 61 62 63



SEE SHEET 7

S1/2 FRAC. SW1/4
SEC. 7

N1/2 FRAC. NW1/4
SEC. 18

LIST OF IRON PINS, PIPES OR MONUMENTS TO BE PROTECTED

STATION	OFFSET	LABEL
1008+14.03	859.71'(LT)	IRON PIN

FIELD BOOK NO 449, 450, 451,
452 & 452B
(R) RECORDED DISTANCE

⊙ - IRON PIN

NOTE: ALL AREAS ARE IN SQUARE FEET
UNLESS OTHERWISE NOTED.

NOTE:
BEARINGS ARE REFERENCED TO THE
ILLINOIS STATE PLANE COORDINATE
SYSTEM EAST ZONE DATUM OF 1983

RIGHT OF WAY PLANS FAP ROUTE 774		
PROJECT	SECTION	107WRS-1 107BY, 107BY-1 107B-2
STATION	1007+27.04	
STATION	1010+27.37	
COUNTY	EFFINGHAM	
SCALE	1"=50'	
	SHEET 10 OF 10	

UTILITIES:

TELEPHONE- ILLINOIS CONSOLIDATED TELEPHONE COMPANY VERIZON NORTH INC.
GAS- AMEREN CIPS
ELECTRICITY- NORRIS ELECTRIC COOPERATIVE AMEREN CIPS
WATER- E J WATER COORORATION LAKE SARA AREA WATER COOPERATIVE, INC. CITY OF EFFINGHAM
SEWER- CITY OF EFFINGHAM
T.V. CABLE- AT & T MEDIA SERVICE

PARCEL	OWNER	ADD AREA TAKEN	EXIST. AREA TAKEN	EASEMENT	REM. AREA	INST	MICRO FILM NO RECORDED	DATE	BOOK	PAGE	AREA EXCESS	SOLD
7007159	STEPHEN KOESTER, AS SUCCESSOR TRUSTEE	380,222			0							
7007150	IOLENE KOESTER	101,062	19,495	54,273	2,309,438							

DRAWN BY: NJV
WRITTEN BY: TLS
CHECKED BY: BKB
INSPECTED BY: RMD

JOB NO. R-97-007-00