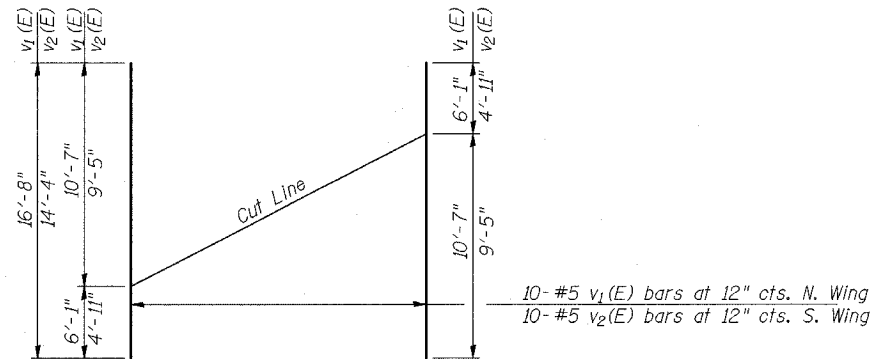
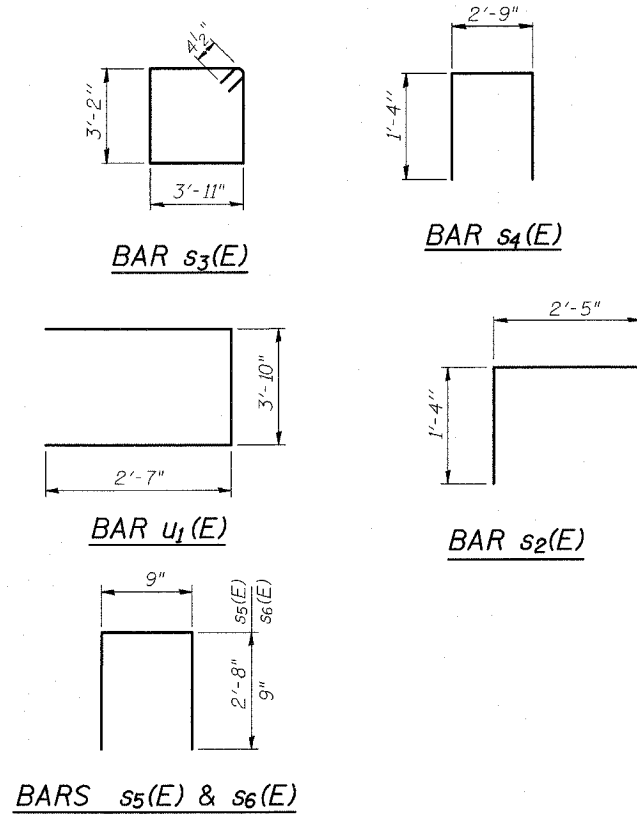


SECTION B-B



FIELD CUTTING DIAGRAM

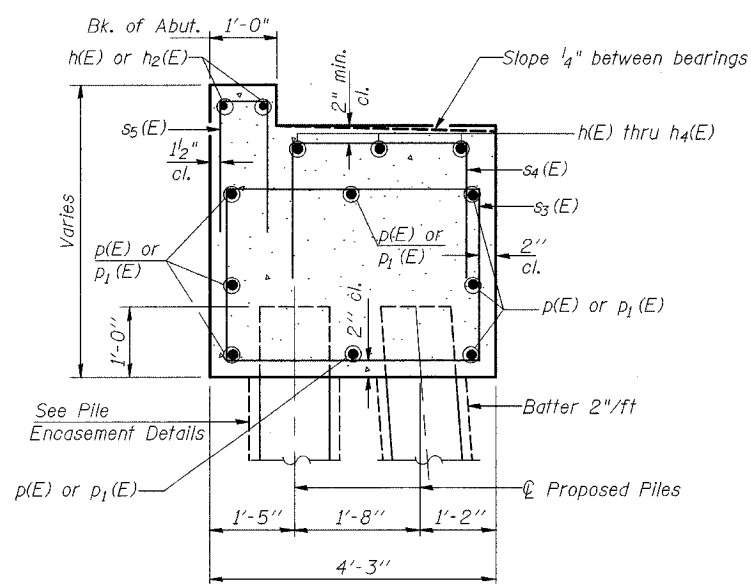
Order $v_1(E)$ and $v_2(E)$ bars full length.
Cut as shown and use remainder of bars
in opposite face.



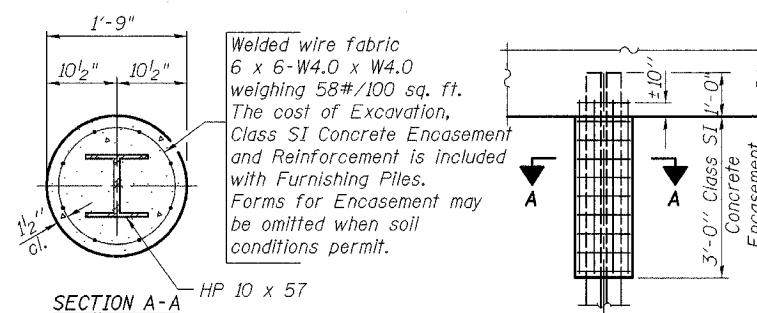
BILL OF MATERIAL 2-ABUTS.

Bar	No.	Size	Length	Shape
$h(E)$	20	#5	16'-9"	—
$h_1(E)$	6	#5	6'-9"	—
$h_2(E)$	20	#5	25'-3"	—
$h_3(E)$	12	#5	16'-9"	—
$h_4(E)$	6	#5	7'-1"	—
$h_5(E)$	60	#5	12'-2"	—
$h_6(E)$	40	#5	9'-8"	—
$p(E)$	16	#7	17'-7"	—
$p_1(E)$	16	#7	16'-10"	—
$p_2(E)$	32	#7	5'-9"	—
$s_2(E)$	184	#4	3'-9"	□
$s_3(E)$	76	#4	14'-11"	□
$s_4(E)$	70	#4	5'-5"	□
$s_5(E)$	70	#5	6'-1"	□
$s_6(E)$	92	#5	2'-3"	□
$u_1(E)$	16	#6	9'-0"	□
$v_1(E)$	20	#5	16'-8"	—
$v_2(E)$	20	#5	14'-4"	—
* Structure Excavation				Cu. Yd. 310
Concrete Structures				Cu. Yd. 79.9
Reinforcement Bars Epoxy Coated				Lbs. 6830
Furnishing Steel Piles HP10x57				Ft. 294
Driving Steel Piles				Ft. 294
Test Piles Steel HP10x57				Each 2
Bar Splacers				Each 10

Reinforcement bars designated (E) shall be epoxy coated.
*Structure Excavation = 155 Cu. Yd. per Abutment.



SECTION A-A



PILE ENCASEMENT DETAIL

Work this sheet with sheets 18 & 19 of 26.

SHEET TITLE		
ABUTMENT DETAILS		
PROJECT	IL RTE. 32/33 OVER LITTLE WABASH RIVER OVERFLOW F.A.P. RTE. 774 SECTION 107BY-1 EFFINGHAM COUNTY STATION 1018+86.92 STRUCTURE NO. 025-0077	PROJECT NO. 02017 SCALE DATE DRAWN BY TFG CHECKED BY KPS/CME/MCB DRAWING NO.
COOMBE-BLOXDORF P.C. Engineers/Land Surveyors Springfield, Illinois Design Firm License No. 184-002703		20 OF 26 SHTS