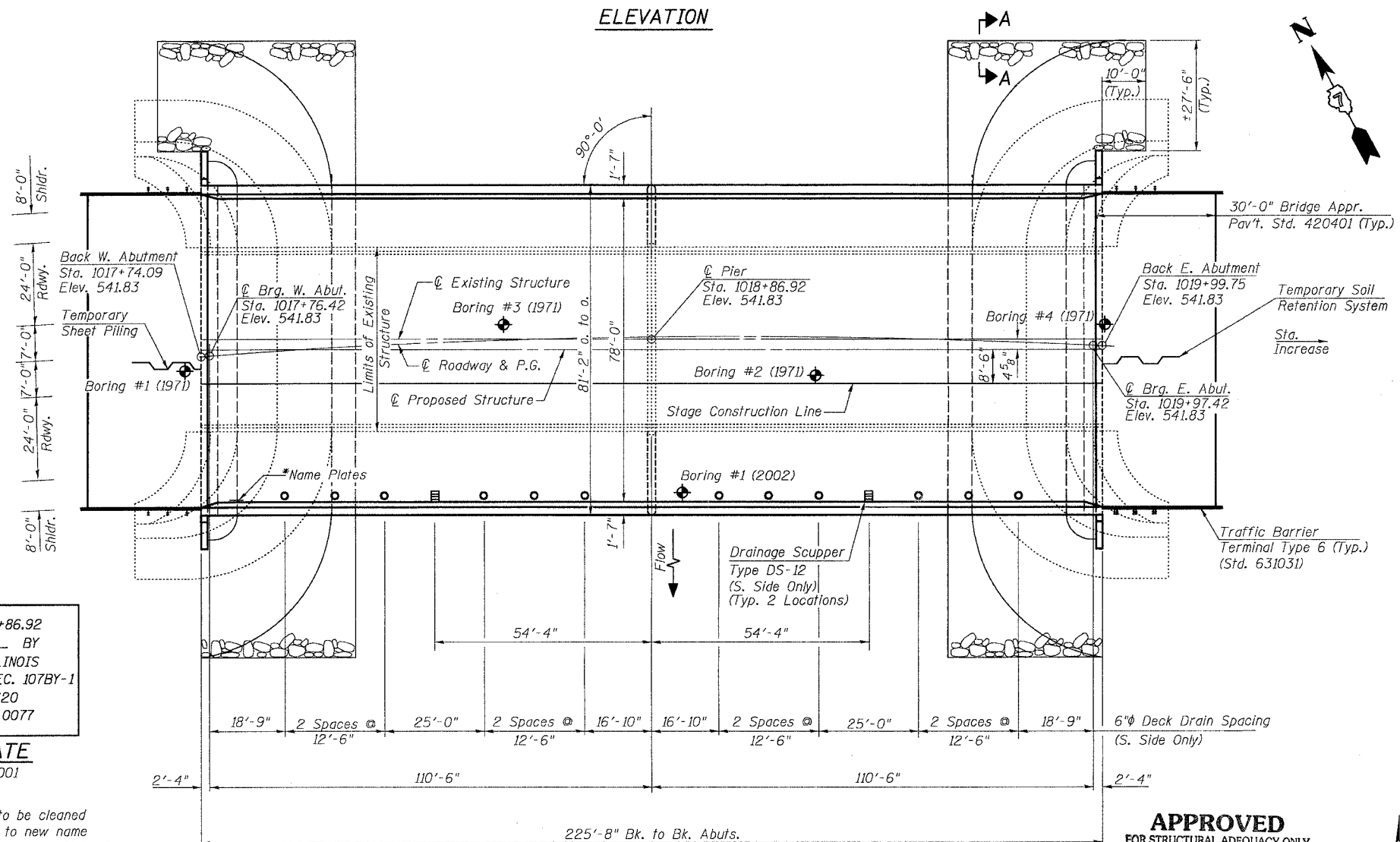
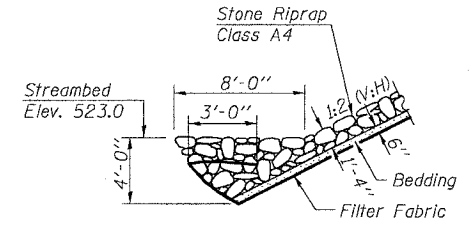
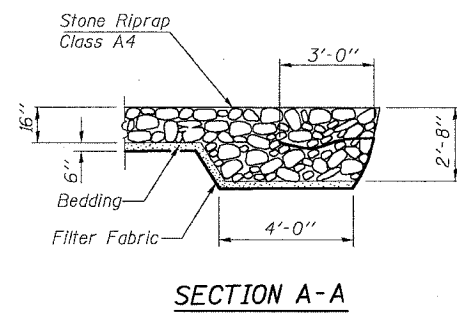
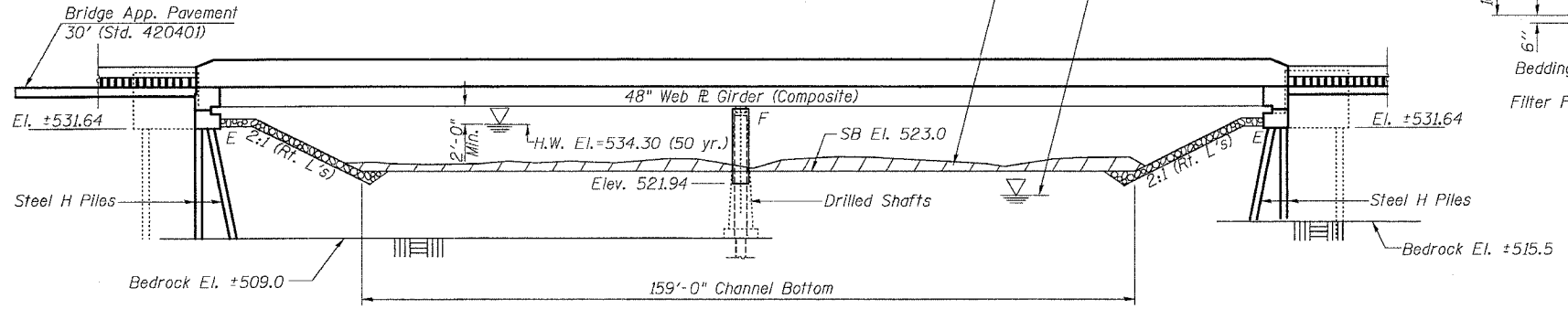


ROUTE NO.	SECTION	COUNTY	TOTAL SHEETS	SHEET NO.	SHEET NO. 1
F.A.P. RTE. 774	107BY-1	EFFINGHAM	273	201	26 SHEETS
FED. ROAD DIST. NO. 7 ILLINOIS FED. AID PROJECT-					

CONTRACT NO. 94827
@ Rdwy. Curve Data
 P.I. = Sta. 1014+09.68
 $\Delta = 25^{\circ}19'45''$ (RT)
 $D = 0^{\circ}30'00''$
 $R = 11,456.75'$
 $L = 5,064.76'$
 $T = 2,574.44'$
 $E = 285.69'$
 $S.E. = 1.56\%$
 P.C. = Sta. 988+35.24
 P.T. = Sta. 1039+00.00
 SE Attained Sta. 985+68.57 to Sta. 989+68.57
 SE Removed Sta. 1037+66.67 to Sta. 1041+66.67

Bench Mark: Chiseled "□" above bridge name plate Elev. = 543.66
 Existing Structure: SN 025-0077 built in 1971 as Ill Rte. 32/33 (FAP 774) Sec. 107(BR, BR-1)
 The superstructure consists of RC deck 225'-8" long by 46'-0" wide out to out supported on a two span R girder.
 Traffic shall be maintained during the rehabilitation of the structure by Staged Construction.



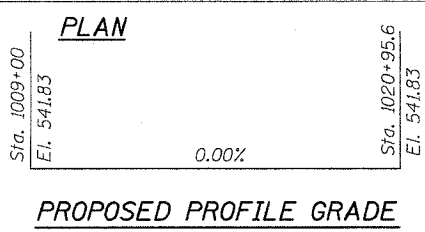
STATION 1018+86.92
 REBUILT 20__ BY
 STATE OF ILLINOIS
 F.A.P. RTE. 774 SEC. 107BY-1
 LOADING HS20
 STR. NO. 025-0077

NAME PLATE
 See Std. 515001

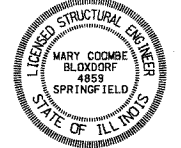
*Exist. name plate is to be cleaned and relocated adjacent to new name plate. Cost included with "Name Plates."

WATERWAY INFORMATION

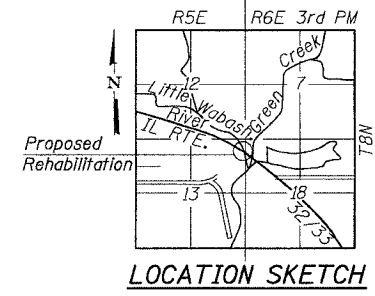
Drainage Area=220 Sq. Miles		Low Grade Elev.=541.3 @ Sta. 1010+00 Max. Rec. H.W.E.=Unk.							
Flood	Freq. Yr.	Q _{total} C.F.S.	Q _{bridge} C.F.S.	Opening Sq. Ft.	Nat. H.W.E.	Head-Ft. Exist.	Head-Ft. Prop.	Headwater El. Exist.	Headwater El. Prop.
Design	50	19,000	7728	1559	1559	534.3	0.5	534.8	534.9
Base	100	21,700	9010	1724	1724	535.0	0.5	535.5	535.5
Max. Calc.	500	28,000	11829	2087	1997	536.7	0.6	537.3	537.4



APPROVED
 FOR STRUCTURAL ADEQUACY ONLY
Robert E. Anderson
 ENGINEER OF BRIDGES AND STRUCTURES



Mary Coombe Bloxdorf
 Illinois Structural No. 4859
 Expires 11-30-2004
 Date: 12/23/03



LOADING HS20-44
 Allow 50#/sq. ft. for future wearing surface.

DESIGN SPECIFICATIONS
 AASHTO 1996 and Interims 1997 Thru 2002 and 1995 Seismic Retrofitting Manual for Highway Bridges FHWA-RD-94-052.

DESIGN STRESSES

NEW CONSTRUCTION	EXISTING CONSTRUCTION
$f'_c = 3,500$ psi	$f_y = 36,000$ psi St. Steel
$f_y = 60,000$ psi (reinf.)	
$f_y = 36,000$ psi (M270 Grade 36)	

SEISMIC DATA
 Seismic Performance Category (SPC) = A
 Bedrock Acceleration Coefficient (A) = 0.07g
 Site Coefficient (S) = 1.0

SHEET TITLE GENERAL PLAN AND ELEVATION		PROJECT NO. 02017
PROJECT IL RTE. 32/33 OVER LITTLE WABASH RIVER OVERFLOW F.A.P. RTE. 774 SECTION 107BY-1 EFFINGHAM COUNTY STATION 1018+86.92 STRUCTURE NO. 025-0077		SCALE DATE DRAWN BY TFC CHECKED BY KPS/CME/MCB DRAWING NO.
COOMBE-BLOXDORF P.C. Engineers / Land Surveyors Springfield, Illinois Design Firm License No. 184-002703		1 OF 26 SHITS