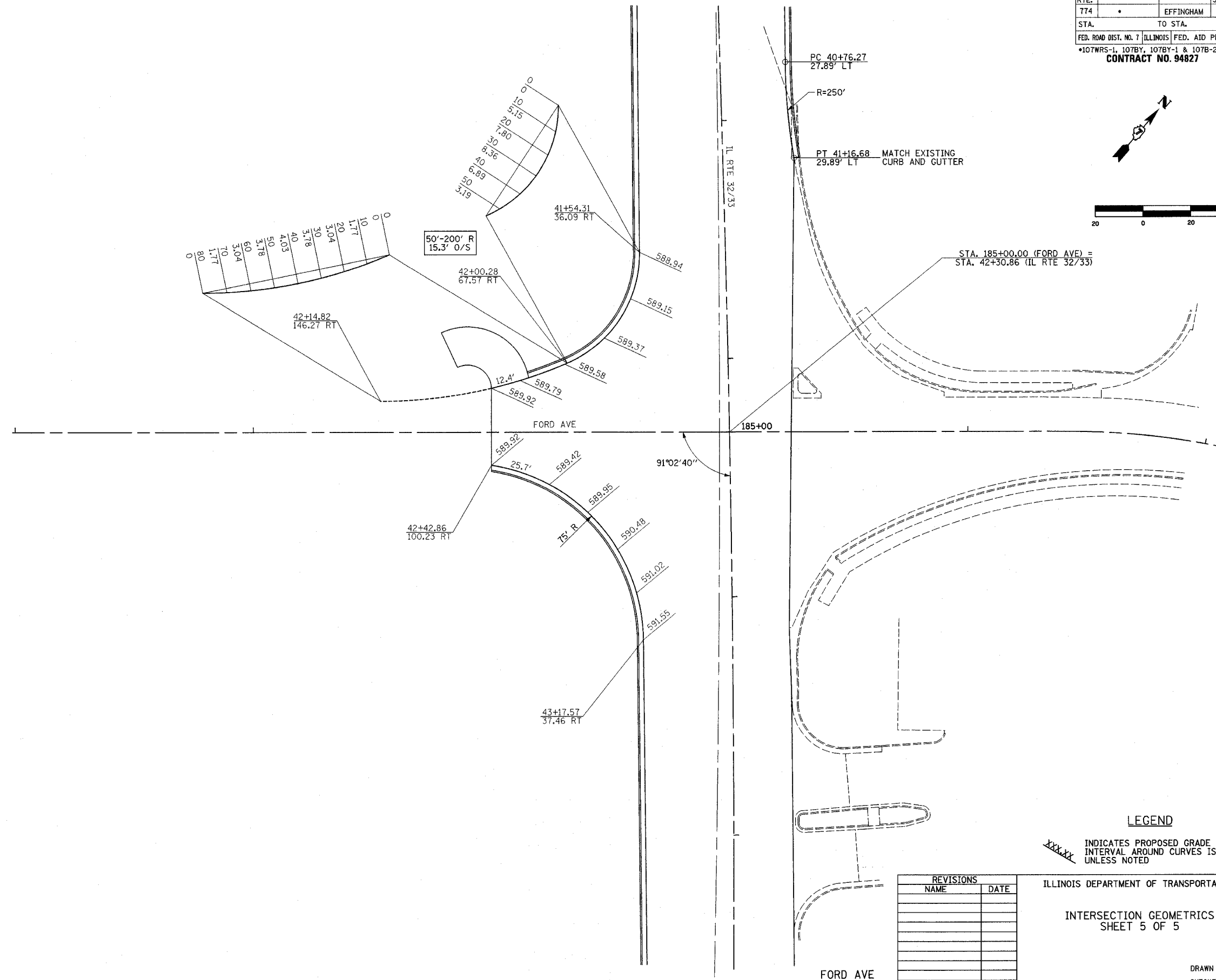
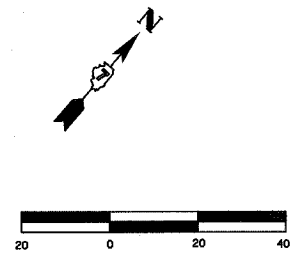


F.A.P. RTE.	SECTION	COUNTY	TOTAL SHEETS	SHEET NO.
774	*	EFFINGHAM	273	79
STA.	TO STA.			
FED. ROAD DIST. NO. 7		ILLINOIS	FED. AID PROJECT	
*107WRS-1, 107BY, 107BY-1 & 107B-2				
CONTRACT NO. 94827				



**LEGEND**  
 XXXXX INDICATES PROPOSED GRADE ELEVATION INTERVAL AROUND CURVES IS 20' UNLESS NOTED

REVISIONS	
NAME	DATE

ILLINOIS DEPARTMENT OF TRANSPORTATION  
 INTERSECTION GEOMETRICS  
 SHEET 5 OF 5  
 DRAWN BY MLO  
 CHECKED BY SJK  
 DATE 8/02