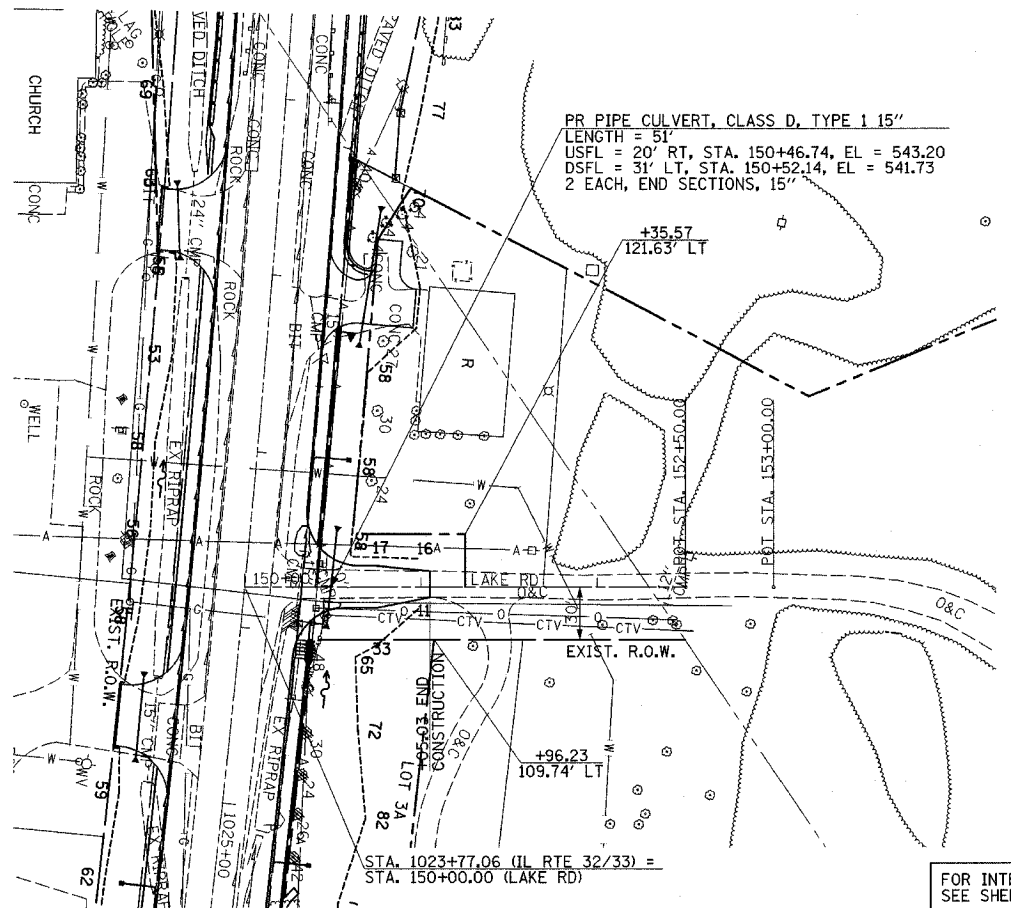


PLAN SURVEYED BY DATE
 NOTE BOOK NO. RT. OF WAY CHECKED
 NO. PAID FILE NAME

PROFILE SURVEYED BY DATE
 NOTE BOOK NO. GRADE CHECKED
 NO. STRUCTURE NOTATIONS CHFD



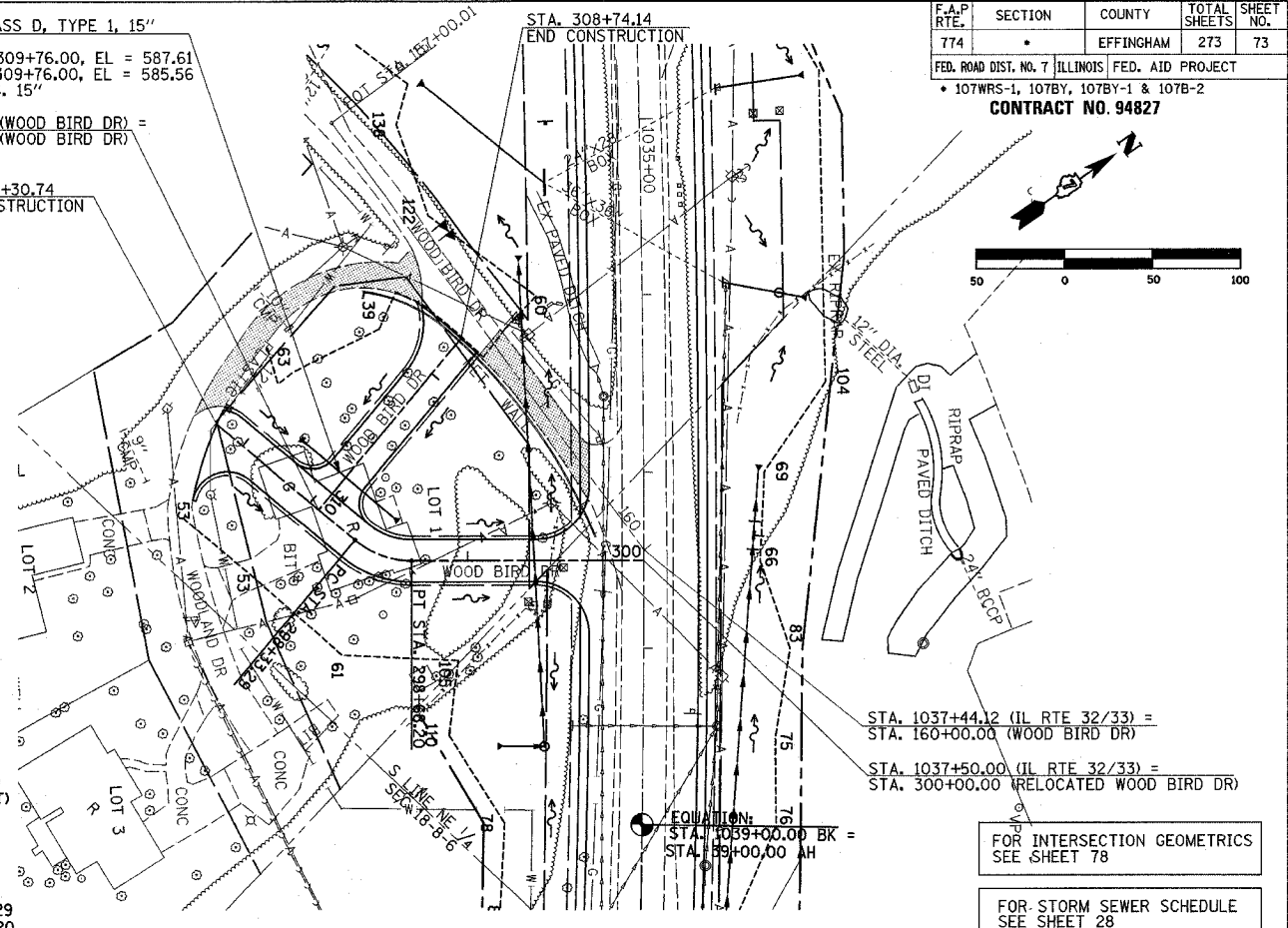
PR PIPE CULVERT, CLASS D, TYPE 1 15"
 LENGTH = 51'
 USFL = 20' RT, STA. 150+46.74, EL = 543.20
 DSFL = 31' LT, STA. 150+52.14, EL = 541.73
 2 EACH, END SECTIONS, 15'

FOR INTERSECTION GEOMETRICS
 SEE SHEET 77

PR PIPE CULVERT, CLASS D, TYPE 1, 15"
 LENGTH = 65'
 USFL = 30' RT, STA. 309+76.00, EL = 587.61
 DSFL = 35' LT, STA. 309+76.00, EL = 585.56
 2 EACH, END SECTIONS, 15'

STA. 297+30.74
 END CONSTRUCTION

PROP. CURVE C61
 PI STA. = 298+51.49
 $\Delta = 40^\circ 00' 00''$ (LT)
 $D = 114^\circ 35' 30''$
 $R = 50.00'$
 $T = 18.20'$
 $L = 34.91'$
 $E = 3.21'$
 $\theta = N/C$
 P.C. STA = 298+33.29
 P.T. STA = 298+68.20

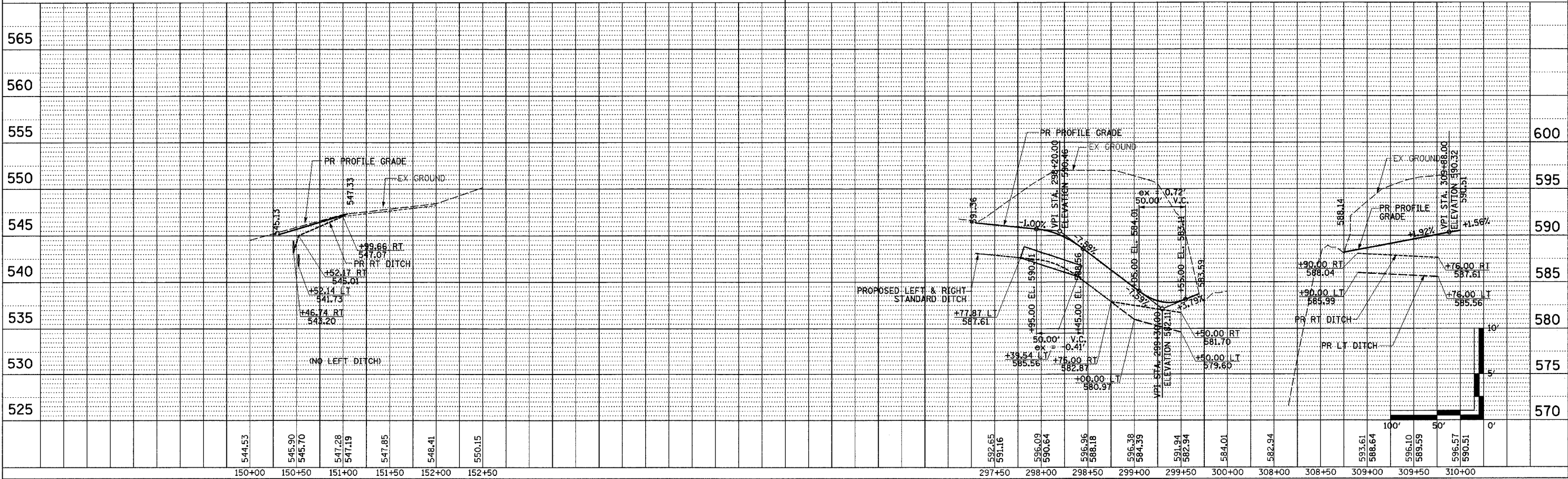


F.A.P. SECTION COUNTY TOTAL SHEET SHEET NO.
 774 * EFFINGHAM 273 73
 FED. ROAD DIST. NO. 7 ILLINOIS FED. AID PROJECT
 * 107WRS-1, 107BY, 107BY-1 & 107B-2
CONTRACT NO. 94827

STA. 1037+44.12 (IL RTE 32/33) =
 STA. 160+00.00 (WOOD BIRD DR)
 STA. 1037+50.00 (IL RTE 32/33) =
 STA. 300+00.00 (RELOCATED WOOD BIRD DR)

FOR INTERSECTION GEOMETRICS
 SEE SHEET 78

FOR STORM SEWER SCHEDULE
 SEE SHEET 28



PROPOSED LEFT & RIGHT
 STANDARD DITCH

LAKE RD & WOOD BIRD DR PUBLIC ROAD SHEET 7 OF 8