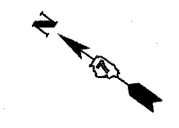


F.A.P. RTE.	SECTION	COUNTY	TOTAL SHEETS	SHEET NO.
774		EFFINGHAM	273	66
STA. 44+00.00		TO STA. 49+20.13		
FED. ROAD DIST. NO. 7 ILLINOIS FED. AID PROJECT				
• 107WRS-1, 107BY, 107BY-1 & 107B-2				
CONTRACT NO. 94827				

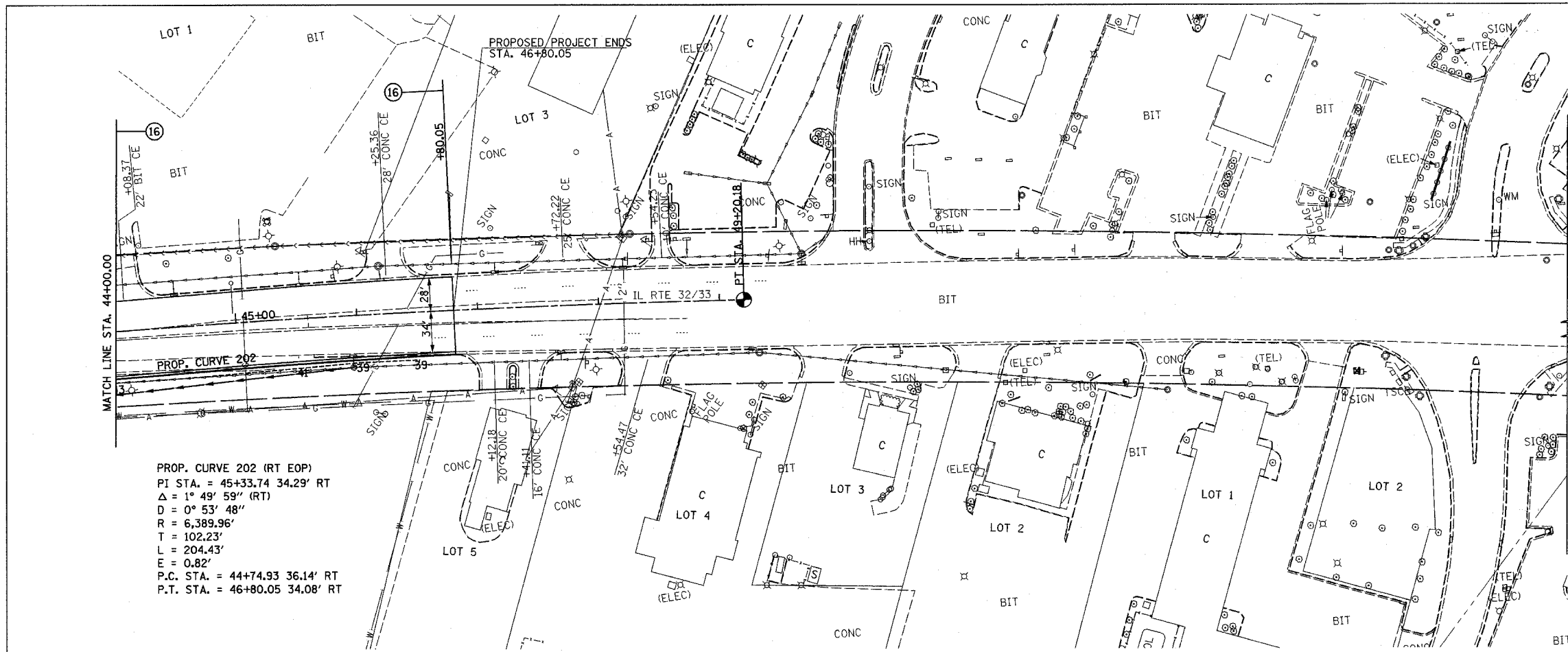


- PERMANENT SURVEY MARKER, TYPE I
PT STA. 49+20.18 1 EACH
- STORM SEWER REMOVAL, 24"
RT STA. 44+00.00 - STA. 45+95.00 195'
- INLETS TO BE ADJUSTED WITH NEW
TYPE 3 FRAME AND GRATE
RT STA. 45+95.00 1 EACH
- COMBINATION CURB AND GUTTER TYPE B-6.24
RT STA. 44+00.00 - STA. 46+80.05 280'
- MEDIAN REMOVAL PARTIAL DEPTH
STA. 44+00.00 - STA. 45+60.00 1272 SQ FT
- COMBINATION CURB AND GUTTER REMOVAL
RT STA. 44+00.00 - STA. 45+80.05 180'

SEE STORM SEWER
SCHEDULE SHEET 28

- | | |
|--|---|
| PROP. CURVE PROP4-2
P.I. STA. = 45+21.11
$\Delta = 4^\circ 27' 29''$ (RT)
$D = 0^\circ 33' 30''$
$R = 10,263.16'$
$T = 399.48'$
$L = 798.55'$
$E = 7.77'$
$e = N/C$
P.C. STA = 41+21.63
P.T. STA = 49+20.18 | EXIST. CURVE C-3
P.I. STA. = 1034+75.4
$\Delta = 44^\circ 02' 00''$
$D = 0^\circ 30' 00''$
$R = 11459.2'$
$T = 4633.6'$
$L = 8806.7'$
$E = 901.4'$
$e = 1.55\%$
P.C. STA = 988+41.2
P.T. STA = 1076+42.9 |
|--|---|

PLAN	DATE	BY
SURVEYED		
PLOTTED		
CHECKED		
DATE		
NO.		
FILE NAME		



PROP. CURVE 202 (RT EOP)
 P.I. STA. = 45+33.74 34.29' RT
 $\Delta = 1^\circ 49' 59''$ (RT)
 $D = 0^\circ 53' 48''$
 $R = 6,389.96'$
 $T = 102.23'$
 $L = 204.43'$
 $E = 0.82'$
 P.C. STA. = 44+74.93 36.14' RT
 P.T. STA. = 46+80.05 34.08' RT

PROFILE	DATE	BY
SURVEYED		
PLOTTED		
CHECKED		
DATE		
NO.		
FILE NAME		

