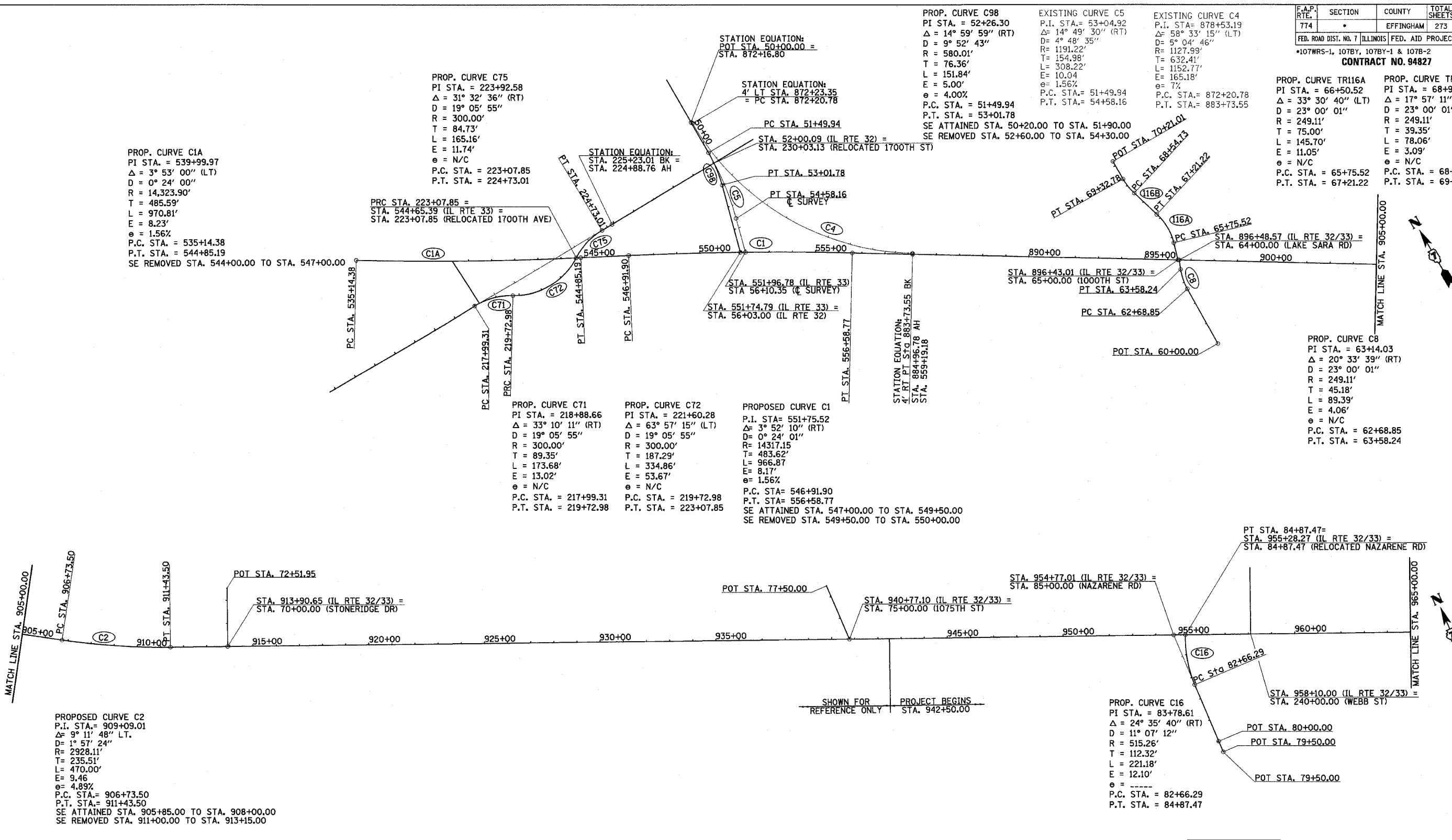


| F.A.P. RTE. | SECTION | COUNTY | TOTAL SHEETS | SHEET NO. |
|---|---------|-----------|--------------|-----------|
| 774 | | EFFINGHAM | 273 | 30 |
| FED. ROAD DIST. NO. 7 ILLINOIS FED. AID PROJECT | | | | |
| *107WRS-1, 107BY, 107BY-1 & 107B-2 | | | | |
| CONTRACT NO. 94827 | | | | |



PROP. CURVE C1A
 P.I. STA. = 539+99.97
 $\Delta = 3^\circ 53' 00''$ (LT)
 $D = 0^\circ 24' 00''$
 $R = 14,323.90'$
 $T = 485.59'$
 $L = 970.81'$
 $E = 8.23'$
 $e = 1.56\%$
 P.C. STA. = 535+14.38
 P.T. STA. = 544+85.19
 SE REMOVED STA. 544+00.00 TO STA. 547+00.00

PROP. CURVE C75
 P.I. STA. = 223+92.58
 $\Delta = 31^\circ 32' 36''$ (RT)
 $D = 19^\circ 05' 55''$
 $R = 300.00'$
 $T = 84.73'$
 $L = 165.16'$
 $E = 11.74'$
 $e = N/C$
 P.C. STA. = 223+07.85
 P.T. STA. = 224+73.01

PRC STA. 223+07.85 =
 STA. 544+65.39 (IL RTE 33) =
 STA. 223+07.85 (RELOCATED 1700TH AVE)

PROP. CURVE C71
 P.I. STA. = 218+88.66
 $\Delta = 33^\circ 10' 11''$ (RT)
 $D = 19^\circ 05' 55''$
 $R = 300.00'$
 $T = 89.35'$
 $L = 173.68'$
 $E = 13.02'$
 $e = N/C$
 P.C. STA. = 217+99.31
 P.T. STA. = 219+72.98

PROP. CURVE C72
 P.I. STA. = 221+60.28
 $\Delta = 63^\circ 57' 15''$ (LT)
 $D = 19^\circ 05' 55''$
 $R = 300.00'$
 $T = 187.29'$
 $L = 334.86'$
 $E = 53.67'$
 $e = N/C$
 P.C. STA. = 219+72.98
 P.T. STA. = 223+07.85

PROPOSED CURVE C1
 P.I. STA. = 551+75.52
 $\Delta = 3^\circ 52' 10''$ (RT)
 $D = 0^\circ 24' 01''$
 $R = 14317.15'$
 $T = 483.62'$
 $L = 966.87'$
 $E = 8.17'$
 $e = 1.56\%$
 P.C. STA. = 546+91.90
 P.T. STA. = 556+58.77
 SE ATTAINED STA. 547+00.00 TO STA. 549+50.00
 SE REMOVED STA. 549+50.00 TO STA. 550+00.00

PROP. CURVE C98
 P.I. STA. = 52+26.30
 $\Delta = 14^\circ 59' 59''$ (RT)
 $D = 9^\circ 52' 43''$
 $R = 580.01'$
 $L = 151.84'$
 $E = 5.00'$
 $e = 4.00\%$
 P.C. STA. = 51+49.94
 P.T. STA. = 53+01.78
 SE ATTAINED STA. 50+20.00 TO STA. 51+90.00
 SE REMOVED STA. 52+60.00 TO STA. 54+30.00

EXISTING CURVE C5
 P.I. STA. = 53+04.92
 $\Delta = 14^\circ 49' 30''$ (RT)
 $D = 4^\circ 48' 35''$
 $R = 1191.22'$
 $T = 154.98'$
 $L = 308.22'$
 $E = 10.04'$
 $e = 1.56\%$
 P.C. STA. = 51+49.94
 P.T. STA. = 54+58.16

EXISTING CURVE C4
 P.I. STA. = 878+53.19
 $\Delta = 58^\circ 33' 15''$ (LT)
 $D = 5^\circ 04' 46''$
 $R = 1127.99'$
 $T = 632.41'$
 $L = 1152.77'$
 $E = 165.18'$
 $e = 7\%$
 P.C. STA. = 872+20.78
 P.T. STA. = 883+73.55

PROP. CURVE TR116A
 P.I. STA. = 66+50.52
 $\Delta = 33^\circ 30' 40''$ (LT)
 $D = 23^\circ 00' 01''$
 $R = 249.11'$
 $T = 75.00'$
 $L = 145.70'$
 $E = 11.05'$
 $e = N/C$
 P.C. STA. = 65+75.52
 P.T. STA. = 67+21.22

PROP. CURVE TR116B
 P.I. STA. = 68+94.08
 $\Delta = 17^\circ 57' 11''$ (RT)
 $D = 23^\circ 00' 01''$
 $R = 249.11'$
 $T = 39.35'$
 $L = 78.06'$
 $E = 3.09'$
 $e = N/C$
 P.C. STA. = 68+54.73
 P.T. STA. = 69+32.78

PROP. CURVE C8
 P.I. STA. = 63+14.03
 $\Delta = 20^\circ 33' 39''$ (RT)
 $D = 23^\circ 00' 01''$
 $R = 249.11'$
 $T = 45.18'$
 $L = 89.39'$
 $E = 4.06'$
 $e = N/C$
 P.C. STA. = 62+68.85
 P.T. STA. = 63+58.24

PROPOSED CURVE C2
 P.I. STA. = 909+09.01
 $\Delta = 9^\circ 11' 48''$ LT.
 $D = 1^\circ 57' 24''$
 $R = 2928.11'$
 $T = 235.51'$
 $L = 470.00'$
 $E = 9.46'$
 $e = 4.89\%$
 P.C. STA. = 906+73.50
 P.T. STA. = 911+43.50
 SE ATTAINED STA. 905+85.00 TO STA. 908+00.00
 SE REMOVED STA. 911+00.00 TO STA. 913+15.00

PROP. CURVE C16
 P.I. STA. = 83+78.61
 $\Delta = 24^\circ 35' 40''$ (RT)
 $D = 11^\circ 07' 12''$
 $R = 515.26'$
 $T = 112.32'$
 $L = 221.18'$
 $E = 12.10'$
 $e =$
 P.C. STA. = 82+66.29
 P.T. STA. = 84+87.47



| REVISIONS | |
|-----------|------|
| NAME | DATE |
| | |
| | |
| | |
| | |
| | |

ILLINOIS DEPARTMENT OF TRANSPORTATION
 HORIZONTAL ALIGNMENT PLAN
 SHEET 1 OF 2
 SCALE: 1"=200'
 DATE 4/22/02
 DRAWN BY NJV
 CHECKED BY BKB