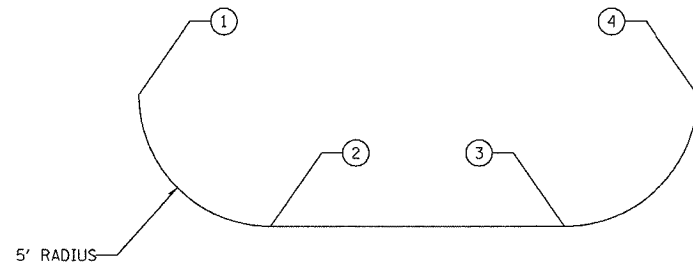


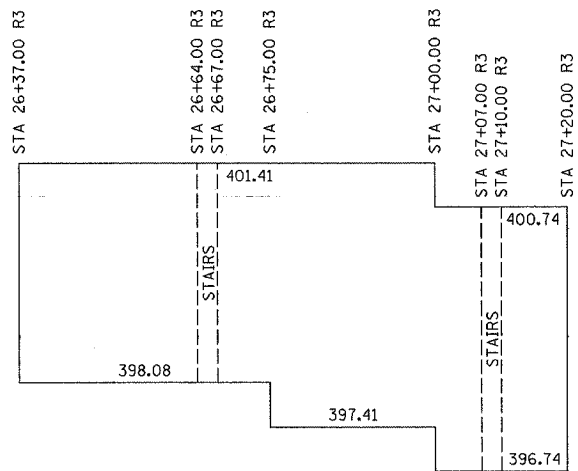
1 2 3 4 5 6 7 8 9 10 11 12 13 14 15 16 17 18
 c:\projects\94652d\02101p.dgn
 REV: MRW 4

c:\projects\94652d\02101pa.dgn
 steffenk.+ DATE

LOCATION #4 = LT. STA. 26+37.00 TO LT. STA. 27+20.00
 WALL AREA = 325 SQ. FT.



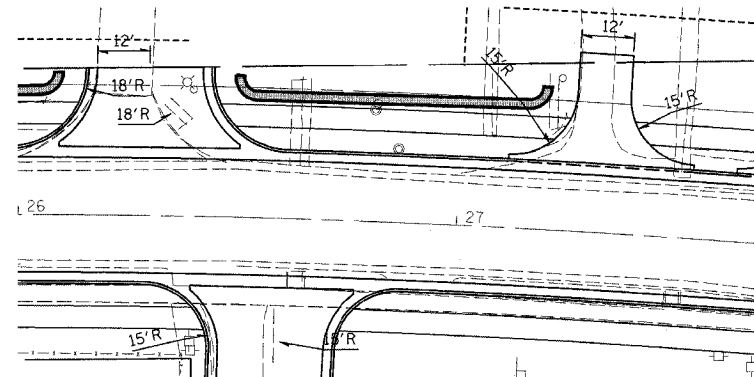
NO.	MAINLINE STATION	MAINLINE OFFSET
1	26+37.00	32.33' LT
2	26+42.00	27.33' LT
3	27+15.00	27.33' LT
4	27+20.00	32.33' LT



TOP AND BOTTOM OF WALL ELEVATIONS
 NOTE: BOTTOM OF WALL NOT BOTTOM OF FOOTING



FAP NO.	SECTION	COUNTY	TOTAL SHEETS	SHEET NO.
332	(101Z)W,RS	WHITE/EDWARDS	198	57
FED. ROAD DIST. NO. 7		ILLINOIS	FED. AID PROJECT NO.	
CONTRACT NO. 94652				



REVISIONS	
NAME	DATE

ILLINOIS DEPARTMENT OF TRANSPORTATION
MODULAR RETAINING WALL
LT STA 26 + 37.00
TO
LT STA 27 + 20.00
 SCALE: VERT. DRAWN BY
 HORIZ. CHECKED BY
 DATE