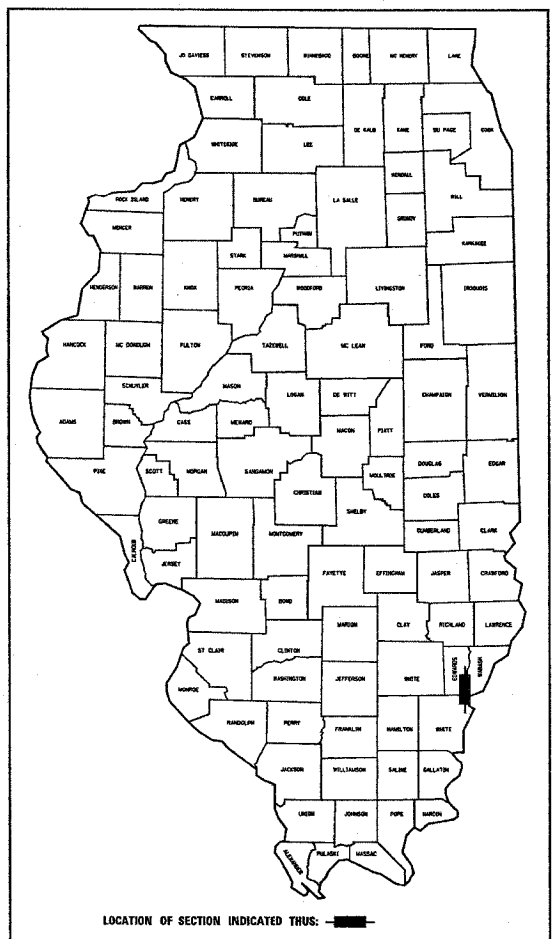


94652

FAP R/L	SECTION	COUNTY	TOTAL SHEETS	SHEET NO.
332	(101Z)W,RS	WHITE/EDWARDS	200	1
FED. ROAD DIST. NO. 7		ILLINOIS	FED. AID PROJECT NO.	

D-97-021-01



LOCATION OF SECTION INDICATED THUS: [Symbol]

STATE OF ILLINOIS
DEPARTMENT OF TRANSPORTATION
DIVISION OF HIGHWAYS

SUBMITTED FEB 8 2005
Chris H. Reed
DEPUTY DIRECTOR OF HIGHWAYS, REGION FOUR ENGINEER

20

ENGINEER OF PROJECT DEVELOPMENT AND IMPLEMENTATION
May 13, 2005
Mike Hene
ENGINEER OF DESIGN AND ENVIRONMENT

May 13, 2005
Peter Roberts
DIRECTOR, DIVISION OF HIGHWAYS

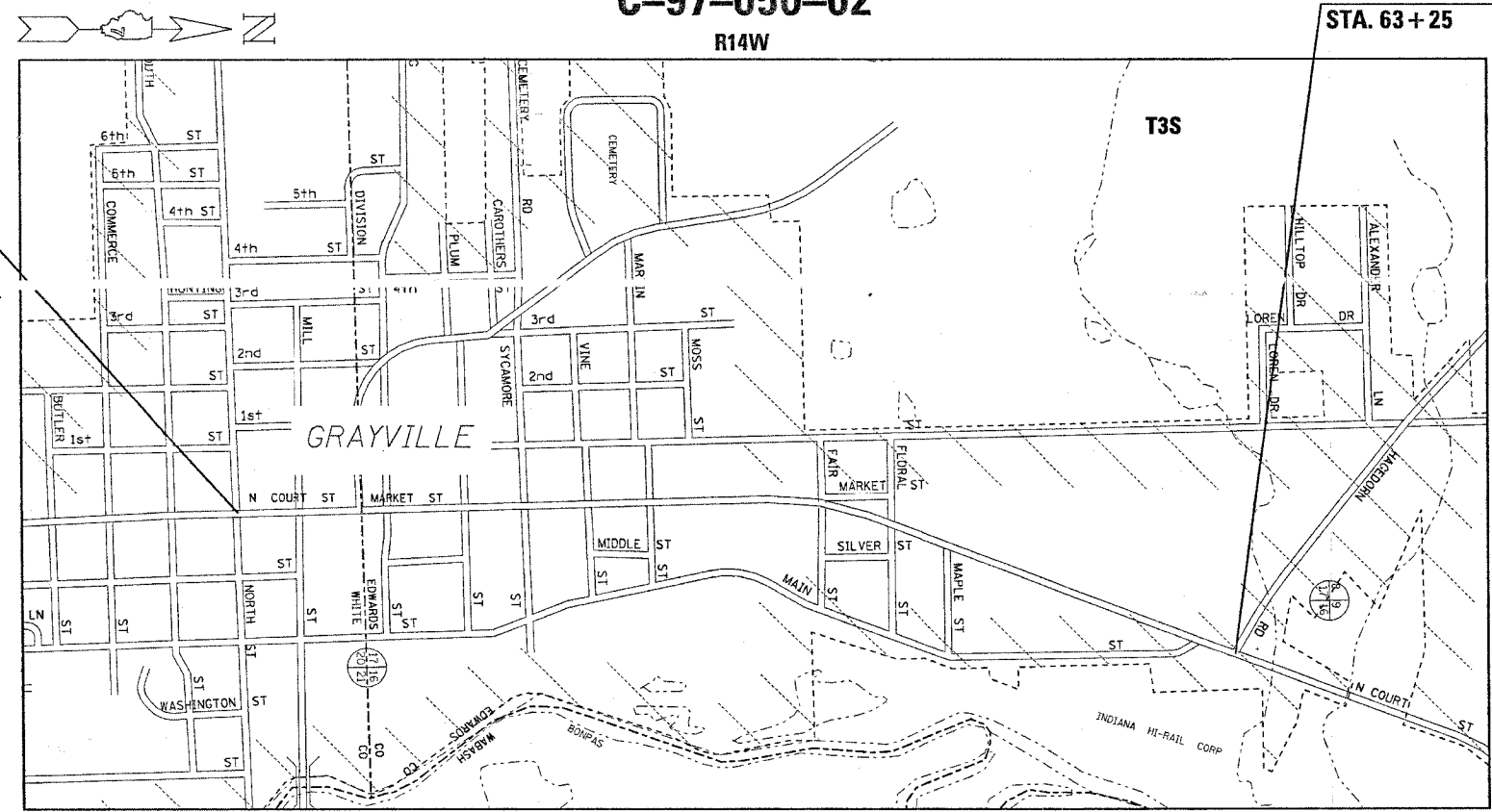
PRINTED BY THE AUTHORITY OF THE STATE OF ILLINOIS

STATE OF ILLINOIS
DEPARTMENT OF TRANSPORTATION
DIVISION OF HIGHWAYS
**PLANS FOR PROPOSED
FEDERAL HIGHWAY PROJECT**

FAP ROUTE 332 (IL 1)
SECTION (101Z)W,RS
PROJECT NO. NHF-0332 (077)
WHITE AND EDWARDS COUNTIES

C-97-050-02
R14W

PROJECT ENDS
STA. 63+25



LOCATION MAP

GROSS LENGTH = 6.872 FEET = 1.30 MILES
NET LENGTH = 6.872 FEET = 1.30 MILES

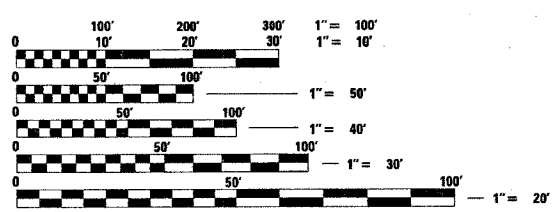
SEAL

FOR INDEX OF SHEETS SEE SHEET 2

STATION EQUATIONS
STA. 849+30 BK = STA. 4+93.03 AH
STA. 24+50 BK = STA. 14+55.09 AH

2001 ADT = 8300

PROJECT BEGINS
STA. 848+85



FULL SIZE PLANS HAVE BEEN PREPARED USING STANDARD ENGINEERING SCALES, REDUCED SIZED PLANS WILL NOT CONFORM TO STANDARD SCALES, IN MAKING MEASUREMENTS ON REDUCED PLANS, THE ABOVE SCALES MAY BE USED.

J.U.L.I.E.
JOINT UTILITY LOCATION INFORMATION FOR EXCAVATION
1-800-892-0123

CONTRACT NO. 94652

TOWNSHIP : ROAD DIST. *8 & GRAY

PROJECT ENGINEER : BILL STANLEY
 SQUAD LEADER : MYRA OLTMAN
 DESIGNER : MYRA OLTMAN
 TELEPHONE : 217/342-3951 EX 314
 MKS 2/2/05
 \94652\A\02101p.dgn
 REV: 1
 1 2 3 4 5 6 7 8 9
 10 11 12 13 14 15 16 17 18
 19 20 21 22 23 24 25 26 27
 28 29 30 31 32 33 34 35 36
 37 38 39 40 41 42 43 44
 45 46 47 48 49 50 51 52 53 54
 55 56 57 58 59 60 61 62 63