

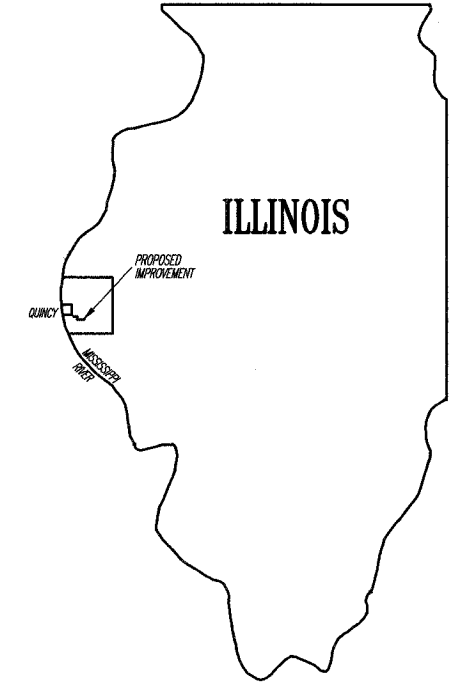
| COUNTY | ROUTE   | SECTION        | TOTAL SHEETS | SHEET NO. |
|--------|---------|----------------|--------------|-----------|
| ADAMS  | FAS 591 | 05-00192-00-RS | 11           | 1         |

STATE OF ILLINOIS  
DEPARTMENT OF TRANSPORTATION  
DIVISION OF HIGHWAYS  
PLANS FOR PROPOSED  
SURFACE TRANSPORTATION/RURAL PROGRAM  
LOCAL AGENCY PAVEMENT PRESERVATION

(C.H. 5) FAS 591                      SECTION 05-00192-00-RS                      ADAMS COUNTY  
PROJECT NO. RS-591(104)                      JOB NO. C-96-211-05

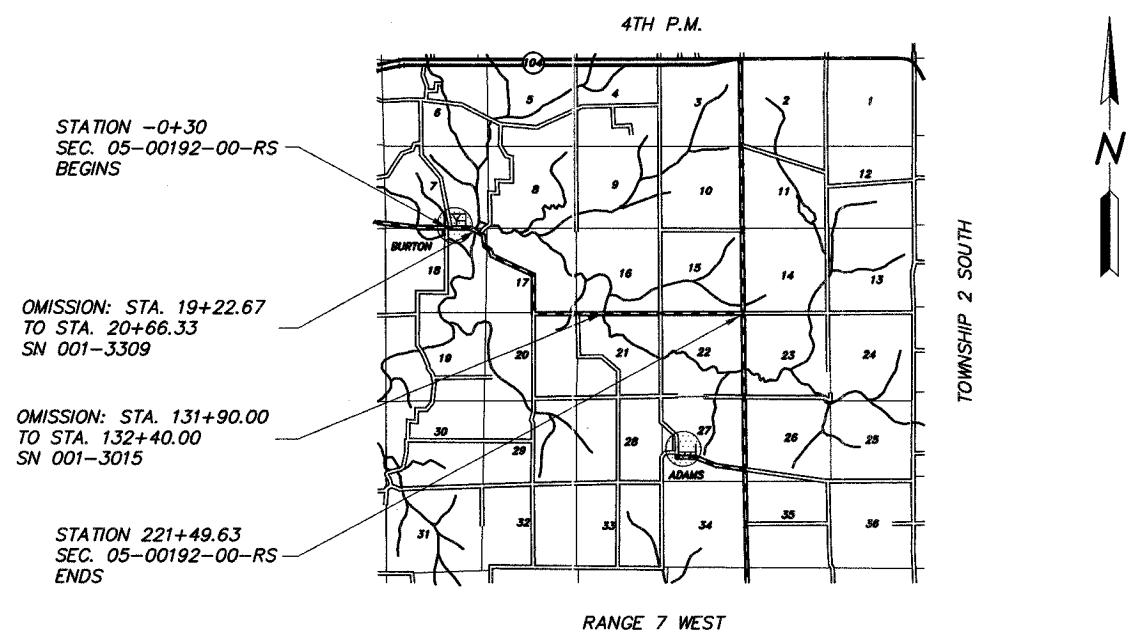
**INDEX OF SHEETS:**

|                  |                              |
|------------------|------------------------------|
| <u>SHEET NO.</u> | <u>SHEET</u>                 |
| 1                | TITLE SHEET                  |
| 2                | SUMMARY OF QUANTITIES        |
|                  | GENERAL NOTES                |
| 3                | TYPICAL CROSS SECTIONS       |
| 4-10             | PLAN SHEETS                  |
| 11               | SIDE ROAD & ENTRANCE DETAILS |
|                  | BUTT JOINT DETAIL            |
|                  |                              |
| STANDARD         | 701301-02                    |
| STANDARD         | 701306-01                    |
| STANDARD         | 702001-05                    |
| STANDARD         | BLR 24-1                     |

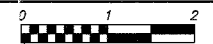


PROPOSED IMPROVEMENT MARKED THUS —

THESE PLANS WERE PREPARED BY ME OR BY A FULL-TIME MEMBER OF MY STAFF WORKING UNDER MY PERSONAL SUPERVISION.



**LOCATION MAP**



FUNCTIONAL CLASS: MAJOR COLLECTOR (NON-URBAN)  
ADT = 300

PROPOSED IMPROVEMENT CONSISTS OF PLACING 2" POLYMERIZED BITUMINOUS CONCRETE SURFACE COURSE, SUPERPAVE, MIX "C", N50 ON THE EXISTING 22' ROADWAY WITH OTHER MISCELLANEOUS CONSTRUCTION

**UTILITIES:**

|                                         |                |
|-----------------------------------------|----------------|
| J.U.L.I.E. ....                         | 1-800-892-0123 |
| AMERITECH .....                         | QUINCY, IL     |
| ADAMS RURAL ELECTRICAL CO-OP .....      | CAMP POINT, IL |
| AMEREN CIPS .....                       | QUINCY, IL     |
| CLAYTON-CAMP POINT WATER DISTRICT ..... | CAMP POINT, IL |
| NICOR GAS .....                         | CARTHAGE, IL   |

|                                  |   |                             |
|----------------------------------|---|-----------------------------|
| GROSS LENGTH:                    |   |                             |
| STA. -0+30 TO STA. 221+49.63     | = | 22,179.63 FT.               |
| OMISSIONS:                       |   |                             |
| STA. 19+22.67 TO STA. 20+66.33   | = | 143.66 FT.                  |
| STA. 131+90.00 TO STA. 132+40.00 | = | 50.00 FT.                   |
| TOTAL OMISSIONS:                 |   | 193.66 FT.                  |
| NET LENGTH TO BE IMPROVED:       |   | 21,985.97 FT. = 4.164 MILES |

SUBMITTED BY Richard A. Klump DATE 4-14-05  
COUNTY ENGINEER  
LICENSE NO. 062-032961  
LIC. EXPIRES 11/30/2005

|                                                           |                                                     |
|-----------------------------------------------------------|-----------------------------------------------------|
| APPROVED <u>April 14</u> 2005                             |                                                     |
| <u>Richard A. Klump</u>                                   | COUNTY ENGINEER                                     |
| PASSED <u>April 19</u> 2005                               |                                                     |
| <u>J.R. Jany</u>                                          | DISTRICT ENGINEER OF CONSTRUCTION                   |
| PASSED <u>APRIL 19</u> 2005                               |                                                     |
| <u>Tom Lind</u>                                           | DISTRICT ENGINEER OF LOCAL ROADS AND STREETS        |
| APPROVED <u>APRIL 19</u> 2005                             |                                                     |
| <u>Christine M. Reed</u>                                  | DEPUTY DIRECTOR OF HIGHWAYS<br>REGION FOUR ENGINEER |
| <b>STATE OF ILLINOIS<br/>DEPARTMENT OF TRANSPORTATION</b> |                                                     |

| COUNTY                                | ROUTE   | SECTION        | TOTAL SHEETS | SHEET NO. |
|---------------------------------------|---------|----------------|--------------|-----------|
| ADAMS                                 | FAS 591 | 05-00192-00-RS | 11           | 2         |
| SUMMARY OF QUANTITIES - GENERAL NOTES |         |                |              |           |

## GENERAL NOTES

1. WHERE SECTION OR SUB-SECTION STONES, USGS BENCH MARK MONUMENTS, AND U.S. ARMY CORPS OF ENGINEERS SURVEY MARKERS ARE ENCOUNTERED, THE ENGINEER SHALL BE NOTIFIED BEFORE SUCH STONES AND MONUMENTS ARE REMOVED. THE CONTRACTOR SHALL PROTECT AND CAREFULLY PRESERVE ALL PROPERTY MARKS UNTIL AN OWNER, AN AUTHORIZED SURVEYOR OR THEIR REPRESENTATIVE HAS WITNESSED OR OTHERWISE REFERENCED THE PROPERTY MARKS LOCATION.
2. ALL PRIVATELY OWNED UTILITIES, UNLESS OTHERWISE SPECIFIED, WILL BE MOVED BY THEIR RESPECTIVE OWNERS WHERE REQUIRED. THE FOLLOWING UTILITY COMPANIES HAVE FACILITIES WITHIN THE LIMITS OF CONSTRUCTION:
  - AMERITECH
  - ADAMS RURAL ELECTRICAL CO-OP
  - AMEREN CIPS
  - CLAYTON - CAMP POINT WATER DISTRICT
  - NICOR GAS
3. THE NOMINAL THICKNESS FOR THE LEVELING BINDER, SURFACE COURSES AND AGGREGATE SHOULDERS ARE SHOWN ON THE TYPICAL SECTIONS, STANDARDS, SCHEDULES OR SPECIAL DETAILS. THE CONSTRUCTED THICKNESS OF THE ABOVE ITEMS SHALL NOT BE LESS THAN 90% OF THE NOMINAL THICKNESS AT ANY LOCATION. THE THICKNESS OF BITUMINOUS MIXTURE SHOWN ON THE PLANS IS THE NOMINAL THICKNESS. DEVIATIONS FROM THE NOMINAL THICKNESS WILL BE PERMITTED WHEN SUCH DEVIATIONS OCCUR DUE TO IRREGULARITIES IN THE EXISTING SURFACE OR BASE WHICH THE BITUMINOUS MIXTURE IS PLACED.
4. THE CONTRACTOR SHALL BE RESPONSIBLE FOR DETERMINING THE LOCATION AND ELEVATION OF ALL EXISTING UTILITIES AND TO NOTIFY ALL UTILITY COMPANIES PRIOR TO THE BEGINNING OF CONSTRUCTION. THIS WILL BE CONSIDERED INCIDENTAL TO THE CONTRACT.
5. APPLICATION RATES SHALL BE AS FOLLOWS UNLESS OTHERWISE SPECIFIED BY THE ENGINEER:
  - BITUMINOUS MIXTURES  
112 LBS PER SQUARE YARD
  - BITUMINOUS MATERIALS (PRIME COAT)  
0.05-0.10 GALLON PER SQUARE YARD ON PCC OR BITUMINOUS CONCRETE  
0.25-0.35 GALLON PER SQUARE YARD ON AGGREGATE
  - AGGREGATE (PRIME COAT)  
4 LBS PER SQUARE YARD
6. PERMANENT & TEMPORARY PAVEMENT MARKING TO BE DONE BY OTHERS. SHORT TERM PAVEMENT MARKING IS INCLUDED IN THE CONTRACT. THE REMOVAL OF THE SHORT TERM PAVEMENT MARKING TAPE WILL BE DONE BY OTHERS UPON COMPLETION OF THE PERMANENT PAVEMENT MARKING.

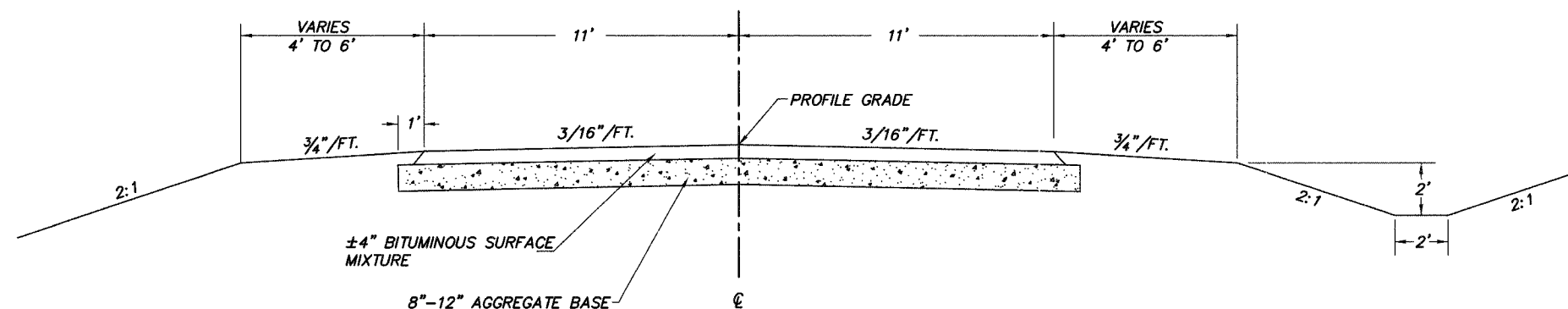
## SUMMARY OF QUANTITIES

| QUANTITY | UNIT    | ITEM                                                                    | CODE NO. | SPECIAL PROVISIONS |
|----------|---------|-------------------------------------------------------------------------|----------|--------------------|
| 167      | TON     | BITUMINOUS CONCRETE SURFACE COURSE, SUPERPAVE, MIX "C", N50             | X4066414 | *                  |
| 5922     | TON     | POLYMERIZED BITUMINOUS CONCRETE SURFACE COURSE, SUPERPAVE, MIX "C", N50 | X4066514 | *                  |
| 5130     | GALLON  | BITUMINOUS MATERIALS (PRIME COAT)                                       | 40600100 | *                  |
| 103      | TON     | AGGREGATE (PRIME COAT)                                                  | 40600300 | *                  |
| 354      | SQ. YD. | BITUMINOUS SURFACE REMOVAL - BUTT JOINT                                 | 40600980 | *                  |
| 55       | SQ. YD. | TEMPORARY RAMP                                                          | 40600990 | *                  |
| 1        | L. SUM  | TRAFFIC CONTROL AND PROTECTION                                          | 70101700 | *                  |
| 1999     | FOOT    | SHORT TERM PAVEMENT MARKING                                             | 70300100 | *                  |

CONSTRUCTION TYPE CODE: I000

|                        |         |                |              |           |
|------------------------|---------|----------------|--------------|-----------|
| COUNTY                 | ROUTE   | SECTION        | TOTAL SHEETS | SHEET NO. |
| ADAMS                  | FAS 591 | 05-00192-00-RS | 11           | 3         |
| TYPICAL CROSS SECTIONS |         |                |              |           |

# TYPICAL CROSS SECTIONS

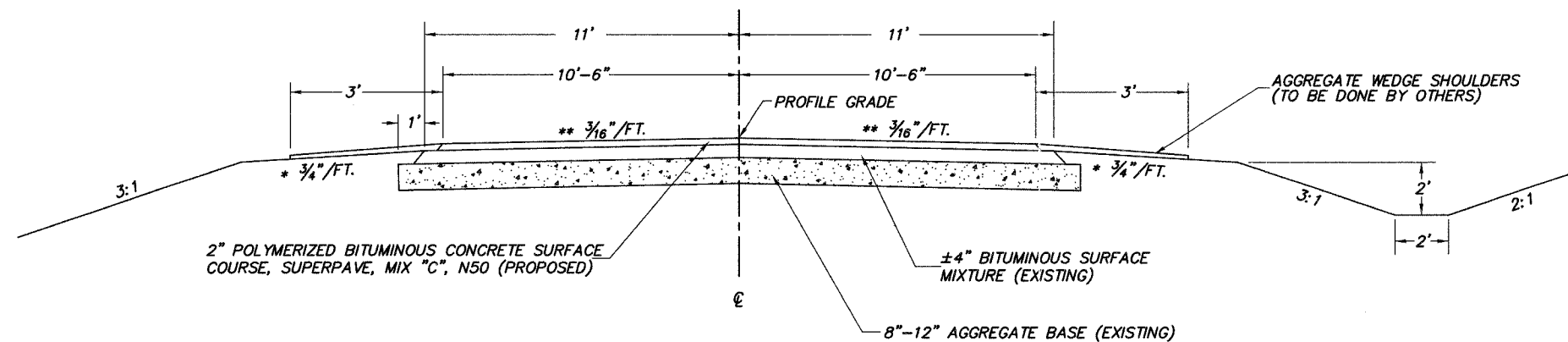


## EXISTING CROSS SECTION

BUILT AS:  
 STA. -0+30.00 TO STA. 3+12.00 (SEC. CBF 433)  
 STA. 10+19.00 TO STA. 20+66.33 (SEC. 76-00089-00-BR)  
 STA. 20+66.33 TO STA. 52+66.33 (SEC. CBF 608A)  
 STA. 61+61.97 TO STA. 72+32.61 (SEC. CBF 608B)  
 STA. 83+02.63 TO STA. 94+91.33 (SEC. CBF 608C)  
 STA. 125+90.00 TO STA. 137+40.00 (SEC. CBF 129)

### CLASS I BITUMINOUS MIXTURE REQUIREMENTS

| ITEM          | ASPHALT GRADE | AGG. COMPOSITION     | ALLOWABLE RAP | VOIDS      |
|---------------|---------------|----------------------|---------------|------------|
| POLY. SURFACE | SBS PG 64-28  | IL-9.5 or 12.5 MIX C | 0%            | 4.0% @ N50 |
| SURFACE       | PG 58-22      | IL-9.5 or 12.5 MIX C | 15%           | 4.0% @ N50 |



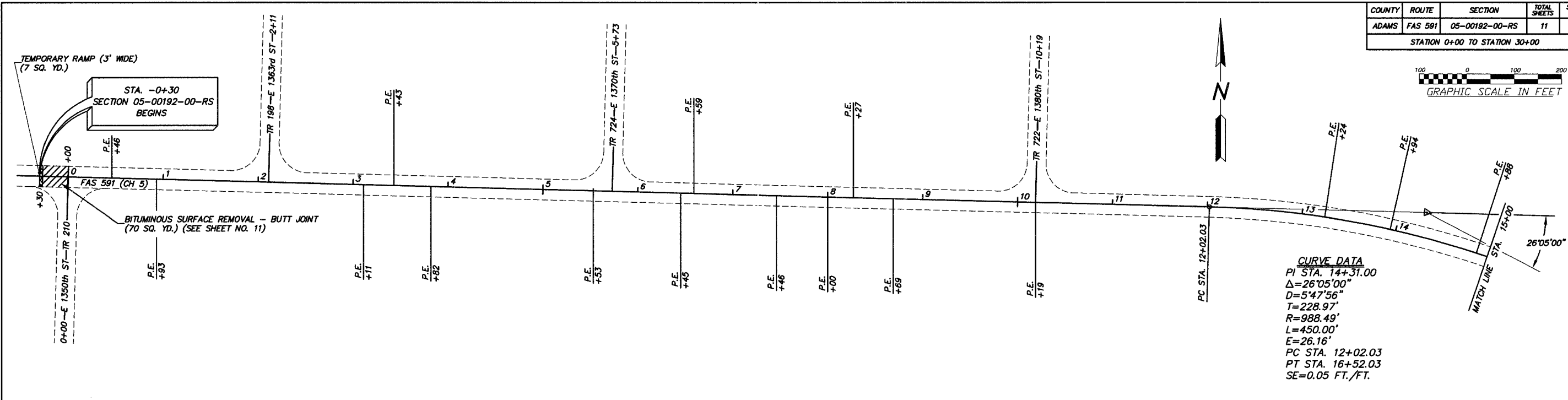
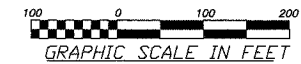
## PROPOSED CROSS SECTION

\* THE ALGEBRAIC DIFFERENCE BETWEEN THE SHOULDER SLOPE AND THE PAVEMENT SLOPE SHALL NOT EXCEED 10%

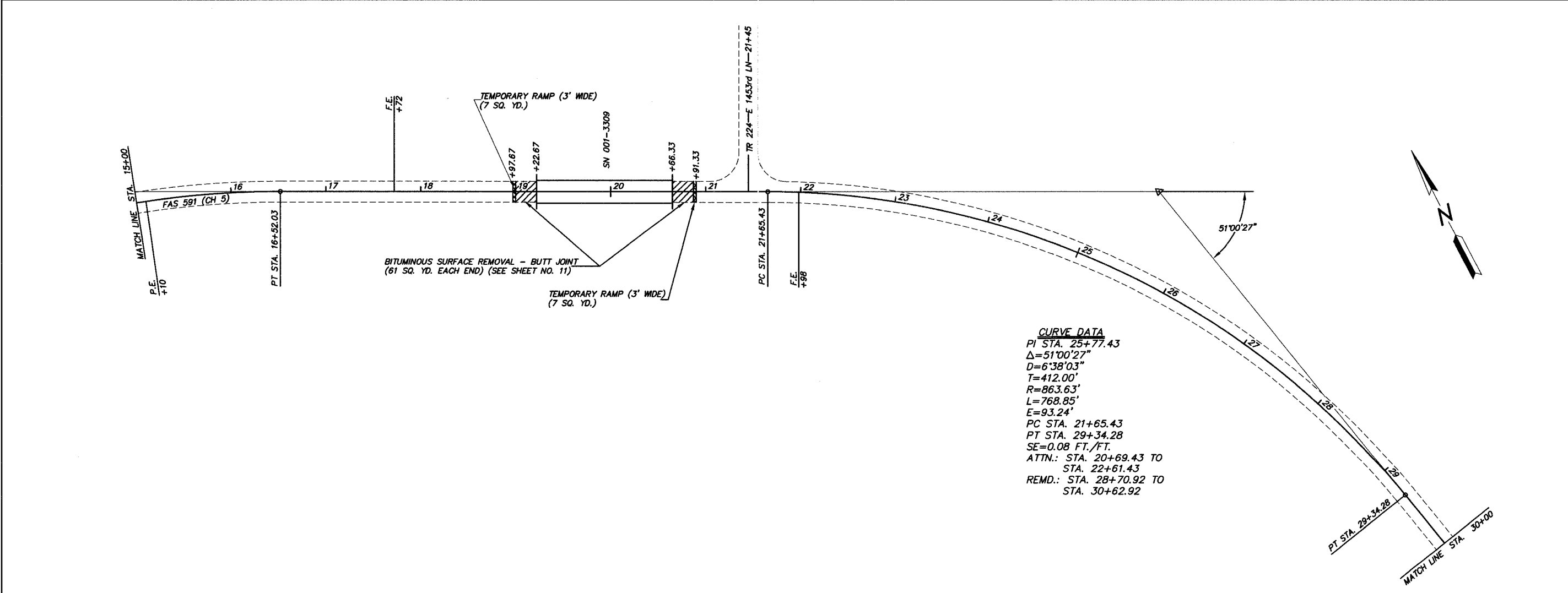
\*\* CROWN DOES NOT APPLY IN AREA OF SUPER-ELEVATION OR SUPER-ELEVATION TRANSITION.

| COUNTY | ROUTE   | SECTION        | TOTAL SHEETS | SHEET NO. |
|--------|---------|----------------|--------------|-----------|
| ADAMS  | FAS 591 | 05-00192-00-RS | 11           | 4         |

STATION 0+00 TO STATION 30+00



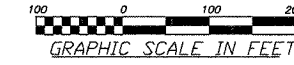
**CURVE DATA**  
 PI STA. 14+31.00  
 $\Delta=26^{\circ}05'00''$   
 $D=5^{\circ}47'56''$   
 $T=228.97'$   
 $R=988.49'$   
 $L=450.00'$   
 $E=26.16'$   
 PC STA. 12+02.03  
 PT STA. 16+52.03  
 $SE=0.05$  FT./FT.



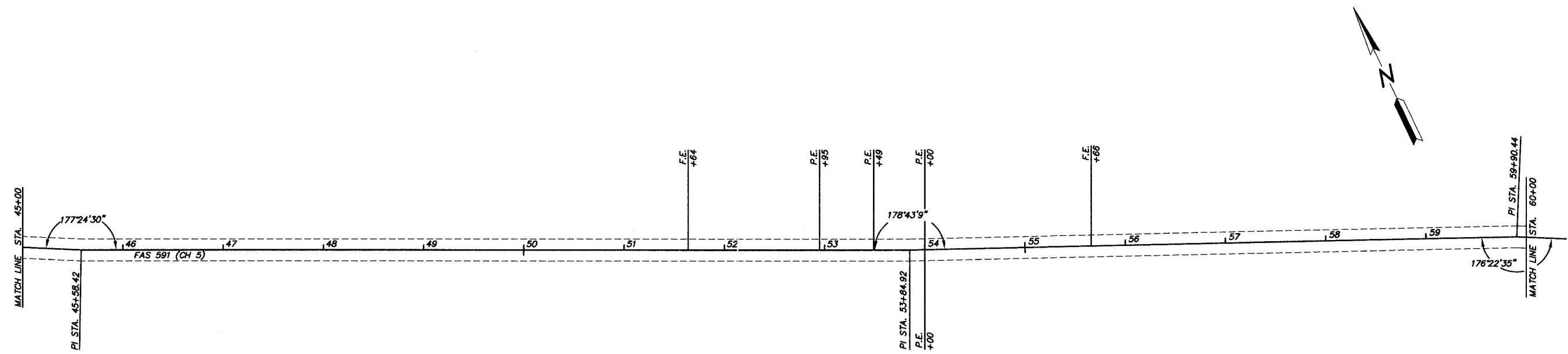
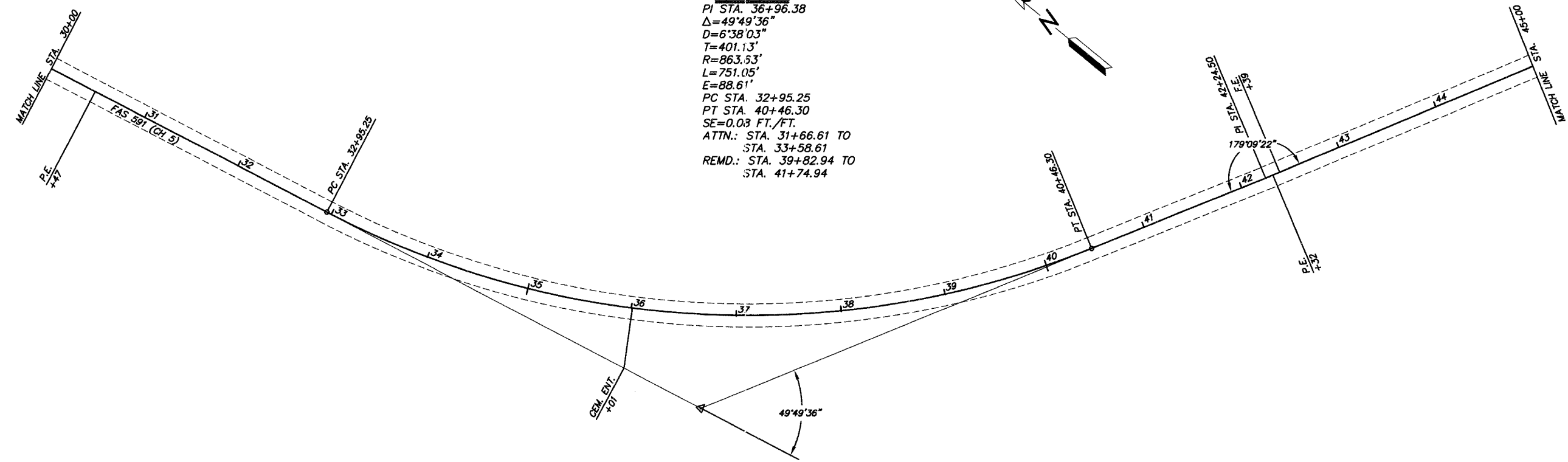
**CURVE DATA**  
 PI STA. 25+77.43  
 $\Delta=51^{\circ}00'27''$   
 $D=6^{\circ}38'03''$   
 $T=412.00'$   
 $R=863.63'$   
 $L=768.85'$   
 $E=93.24'$   
 PC STA. 21+65.43  
 PT STA. 29+34.28  
 $SE=0.08$  FT./FT.  
 ATTN.: STA. 20+69.43 TO  
 STA. 22+61.43  
 REMD.: STA. 28+70.92 TO  
 STA. 30+62.92

| COUNTY | ROUTE   | SECTION        | TOTAL SHEETS | SHEET NO. |
|--------|---------|----------------|--------------|-----------|
| ADAMS  | FAS 591 | 05-00192-00-RS | 11           | 5         |

STATION 30+00 TO STATION 60+00

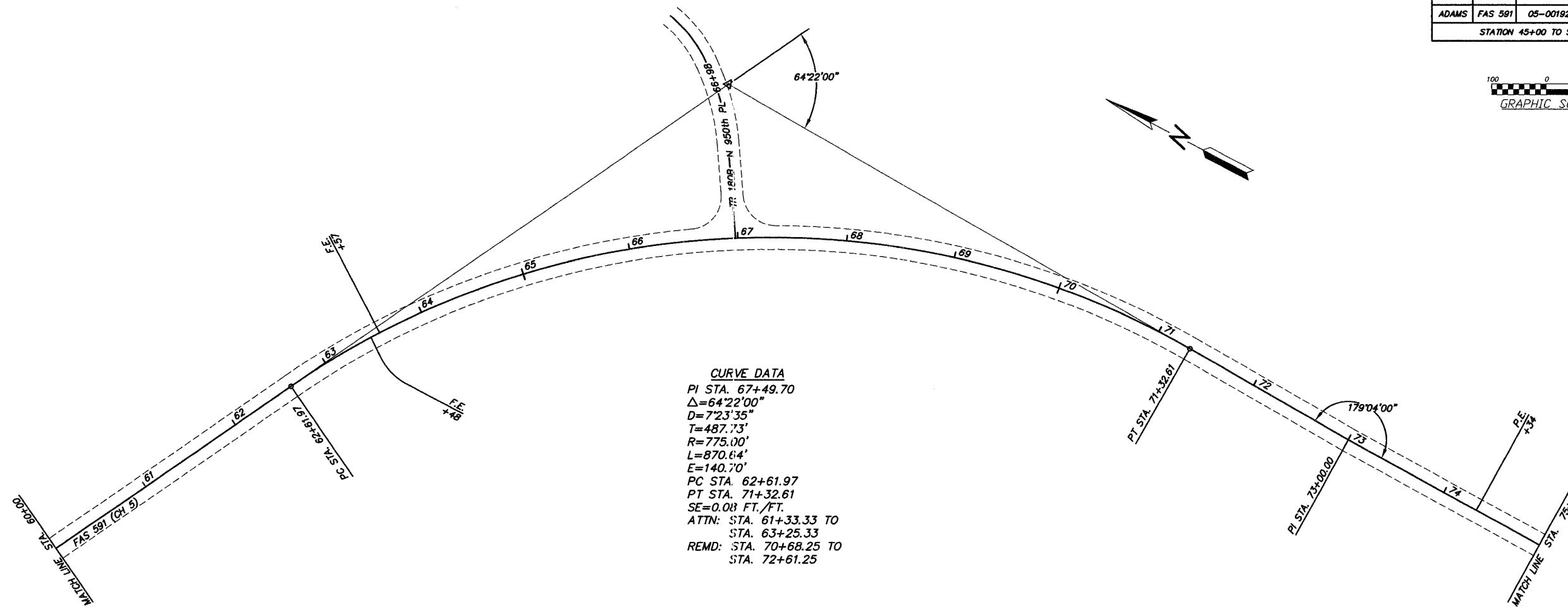
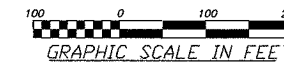


**CURVE DATA**  
 PI STA. 36+96.38  
 $\Delta = 49^{\circ}49'36''$   
 $D = 6^{\circ}38'03''$   
 $T = 401.13'$   
 $R = 863.53'$   
 $L = 751.05'$   
 $E = 88.61'$   
 PC STA. 32+95.25  
 PT STA. 40+46.30  
 $SE = 0.03 \text{ FT./FT.}$   
 ATTN.: STA. 31+66.61 TO  
 STA. 33+58.61  
 REMD.: STA. 39+82.94 TO  
 STA. 41+74.94

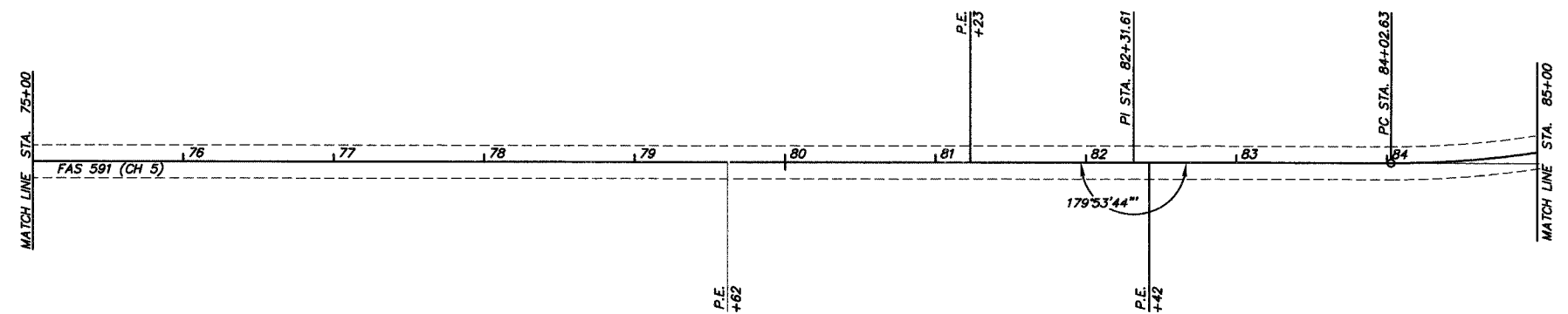


| COUNTY | ROUTE   | SECTION        | TOTAL SHEETS | SHEET NO. |
|--------|---------|----------------|--------------|-----------|
| ADAMS  | FAS 591 | 05-00192-00-RS | 11           | 6         |

STATION 45+00 TO STATION 85+00



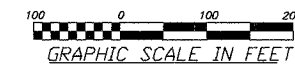
**CURVE DATA**  
 PI STA. 67+49.70  
 $\Delta=64^{\circ}22'00''$   
 $D=7^{\circ}23'35''$   
 $T=487.73'$   
 $R=775.00'$   
 $L=870.64'$   
 $E=140.70'$   
 PC STA. 62+61.97  
 PT STA. 71+32.61  
 SE=0.08 FT./FT.  
 ATTN: STA. 61+33.33 TO  
       STA. 63+25.33  
 REMD: STA. 70+68.25 TO  
       STA. 72+61.25



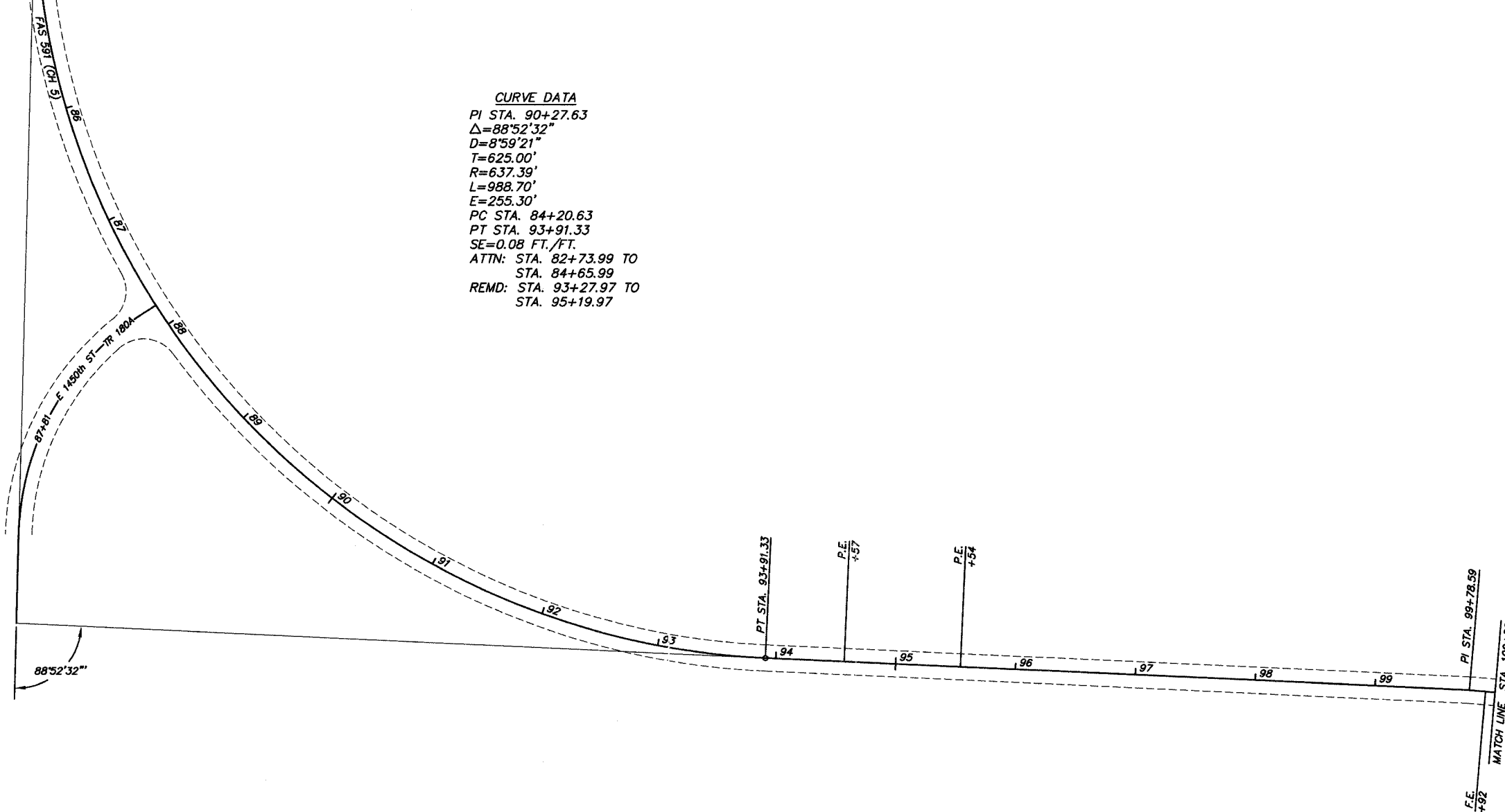
93395

| COUNTY | ROUTE   | SECTION        | TOTAL SHEETS | SHEET NO. |
|--------|---------|----------------|--------------|-----------|
| ADAMS  | FAS 591 | 05-00192-00-RS | 11           | 7         |

STATION 85+00 TO STATION 100+00



MATCH LINE STA. 85+00



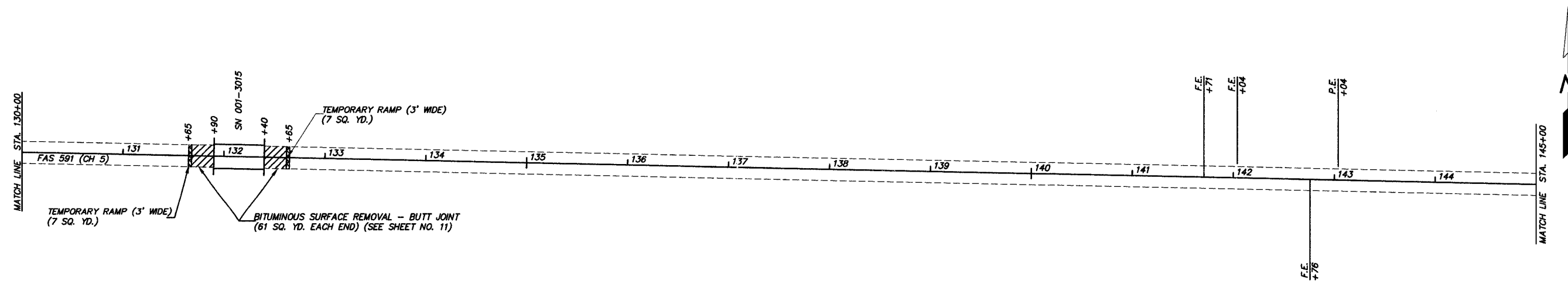
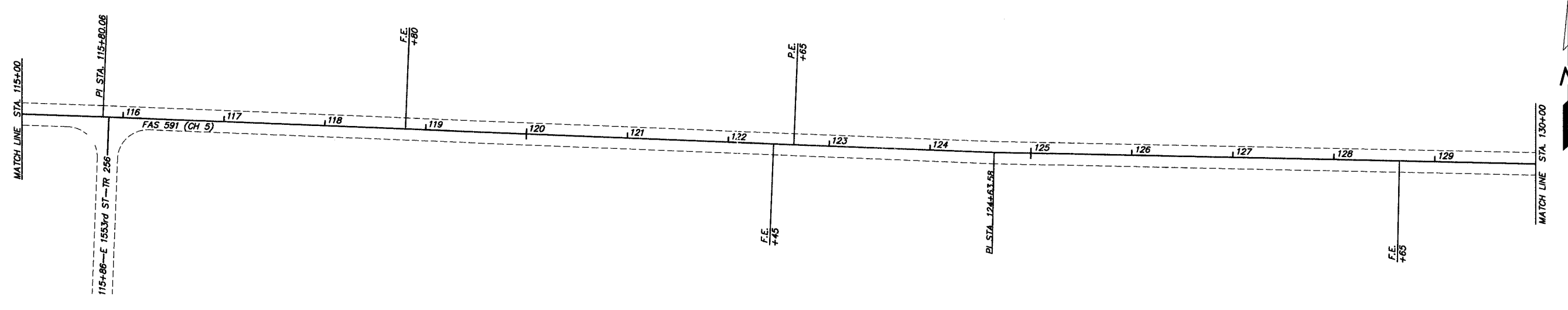
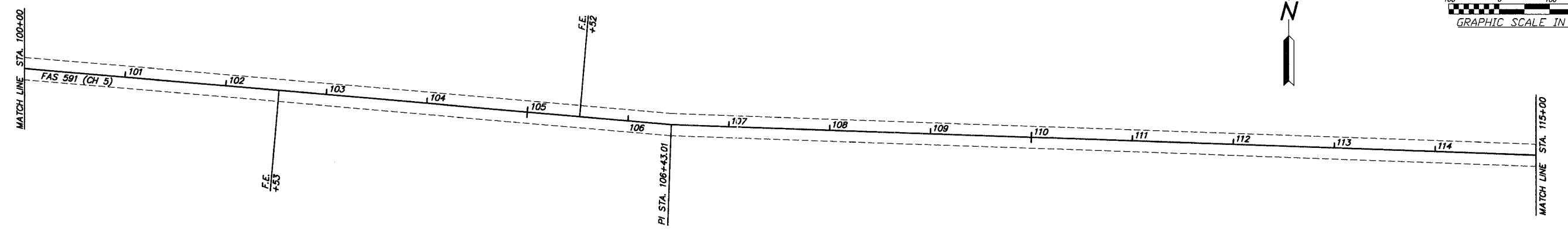
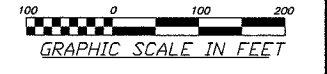
**CURVE DATA**  
PI STA. 90+27.63  
 $\Delta=88^{\circ}52'32''$   
 $D=8^{\circ}59'21''$   
 $T=625.00'$   
 $R=637.39'$   
 $L=988.70'$   
 $E=255.30'$   
PC STA. 84+20.63  
PT STA. 93+91.33  
 $SE=0.08$  FT./FT.  
ATTN: STA. 82+73.99 TO  
STA. 84+65.99  
REMD: STA. 93+27.97 TO  
STA. 95+19.97

$88^{\circ}52'32''$

93395

| COUNTY | ROUTE   | SECTION        | TOTAL SHEETS | SHEET NO. |
|--------|---------|----------------|--------------|-----------|
| ADAMS  | FAS 591 | 05-00192-00-RS | 11           | 8         |

STATION 100+00 TO STATION 145+00

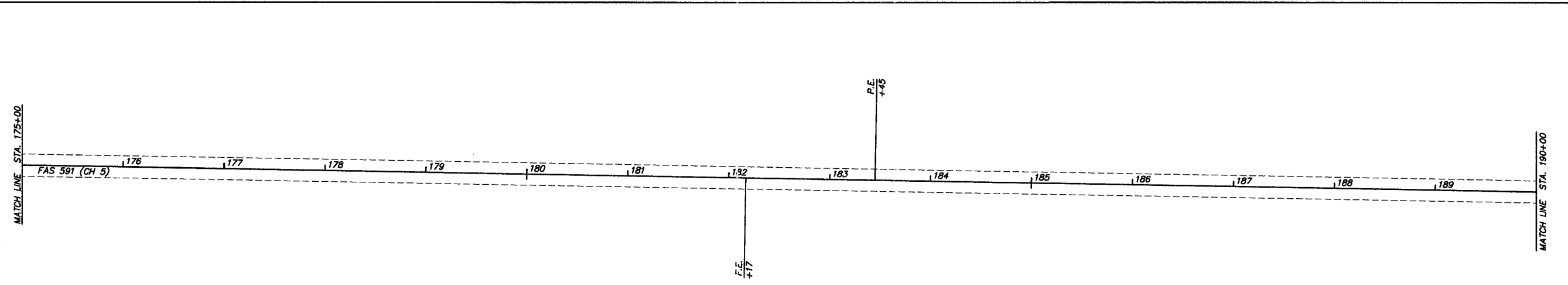
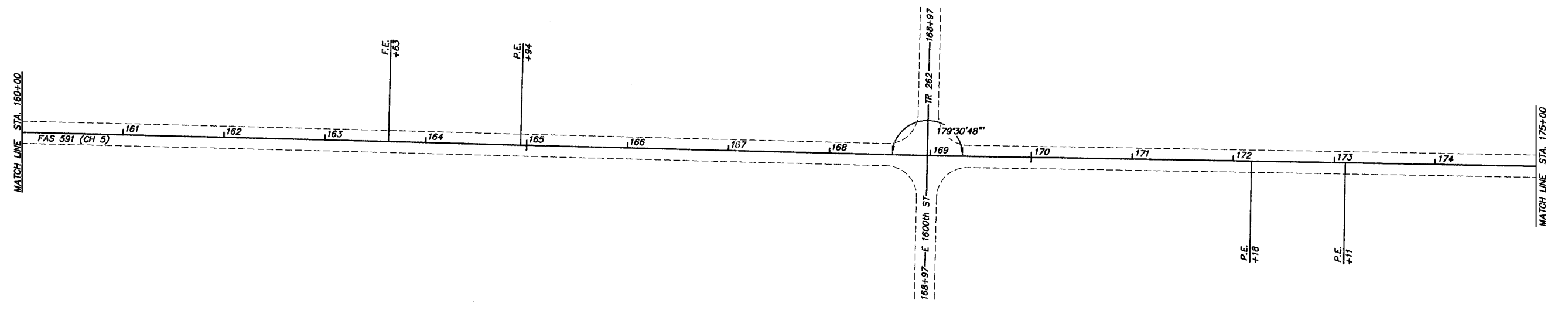
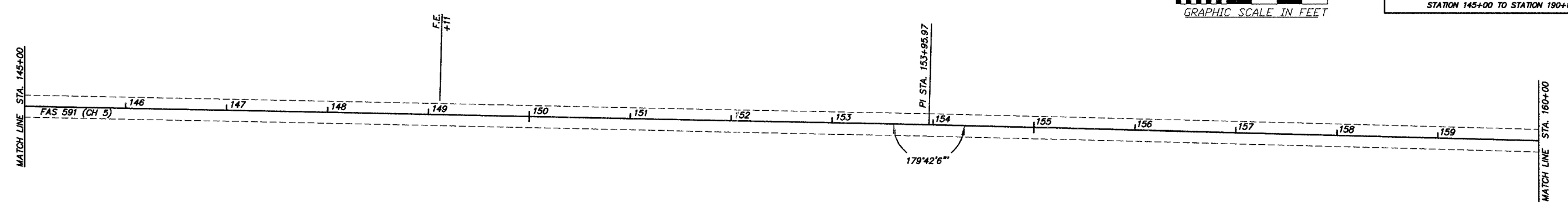
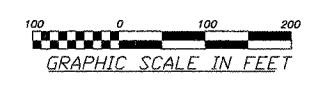




93395

| COUNTY | ROUTE   | SECTION        | TOTAL SHEETS | SHEET NO. |
|--------|---------|----------------|--------------|-----------|
| ADAMS  | FAS 591 | 05-00192-00-RS | 11           | 9         |

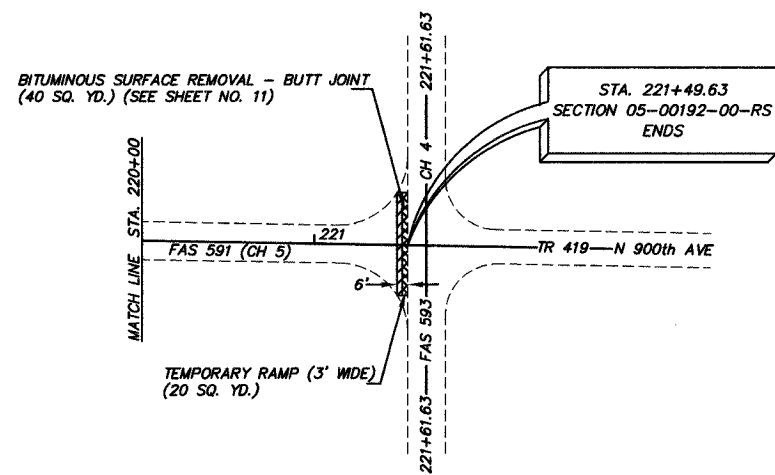
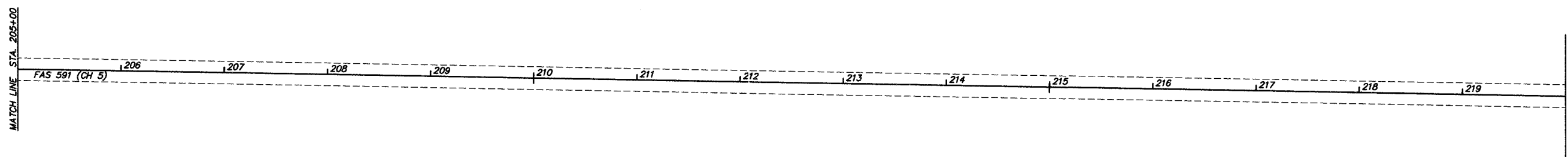
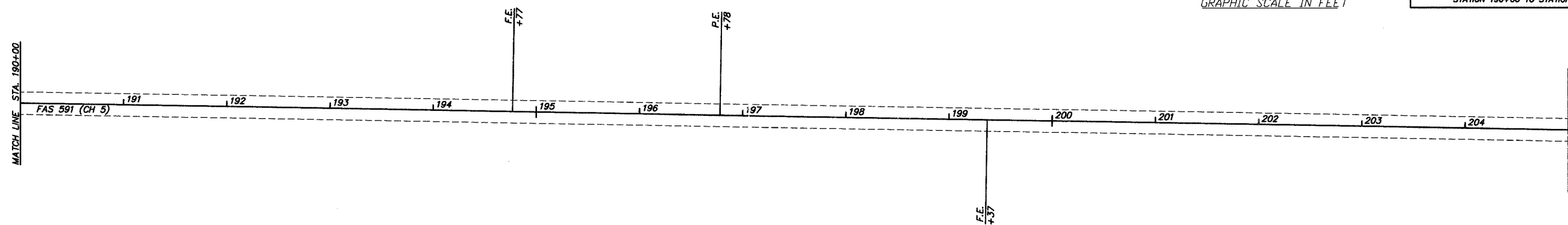
STATION 145+00 TO STATION 190+00



93395

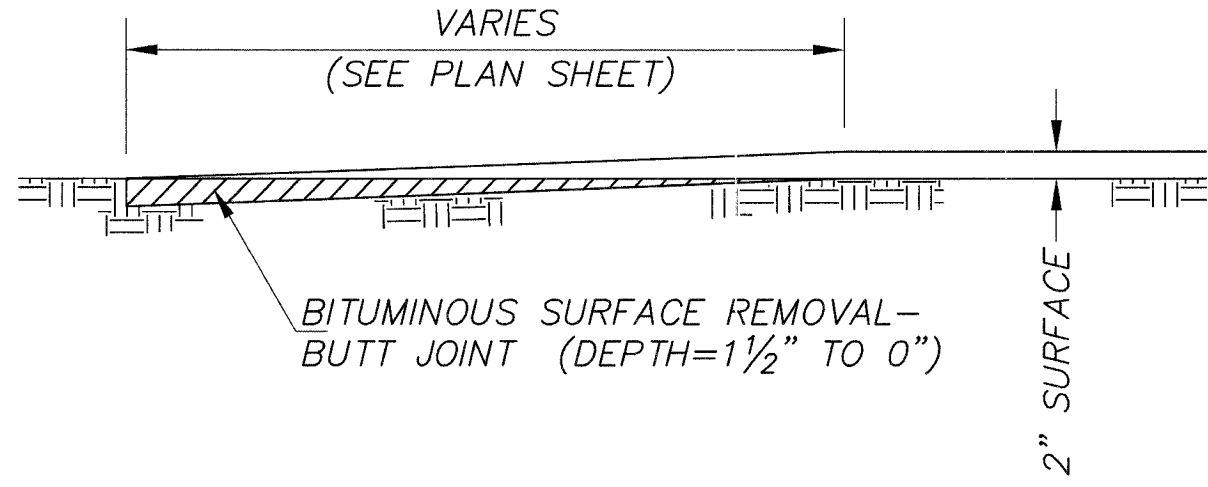
| COUNTY | ROUTE   | SECTION        | TOTAL SHEETS | SHEET NO. |
|--------|---------|----------------|--------------|-----------|
| ADAMS  | FAS 591 | 05-00192-00-RS | 11           | 10        |

STATION 190+00 TO STATION 221+65

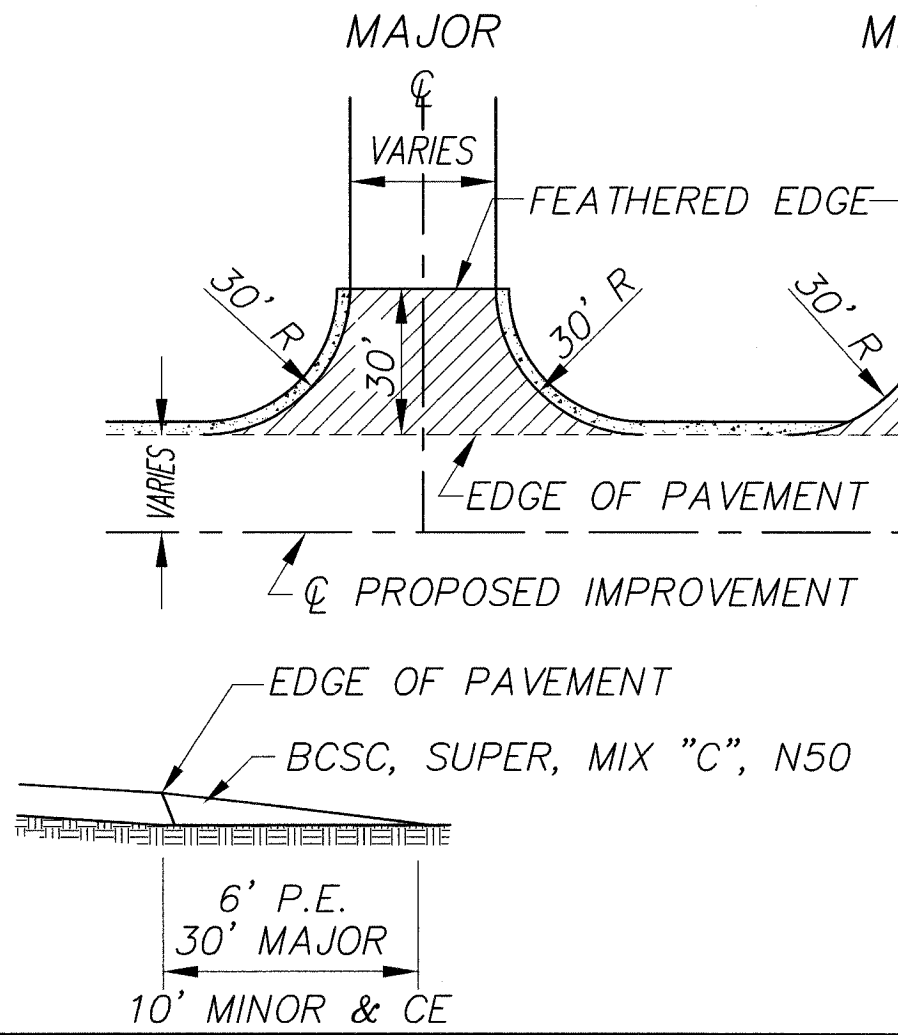


| COUNTY                       | ROUTE   | SECTION        | TOTAL SHEETS | SHEET NO. |
|------------------------------|---------|----------------|--------------|-----------|
| ADAMS                        | FAS 591 | 05-00192-00-RS | 11           | 11        |
| BUTT JOINT DETAIL            |         |                |              |           |
| SIDE ROAD & ENTRANCE DETAILS |         |                |              |           |

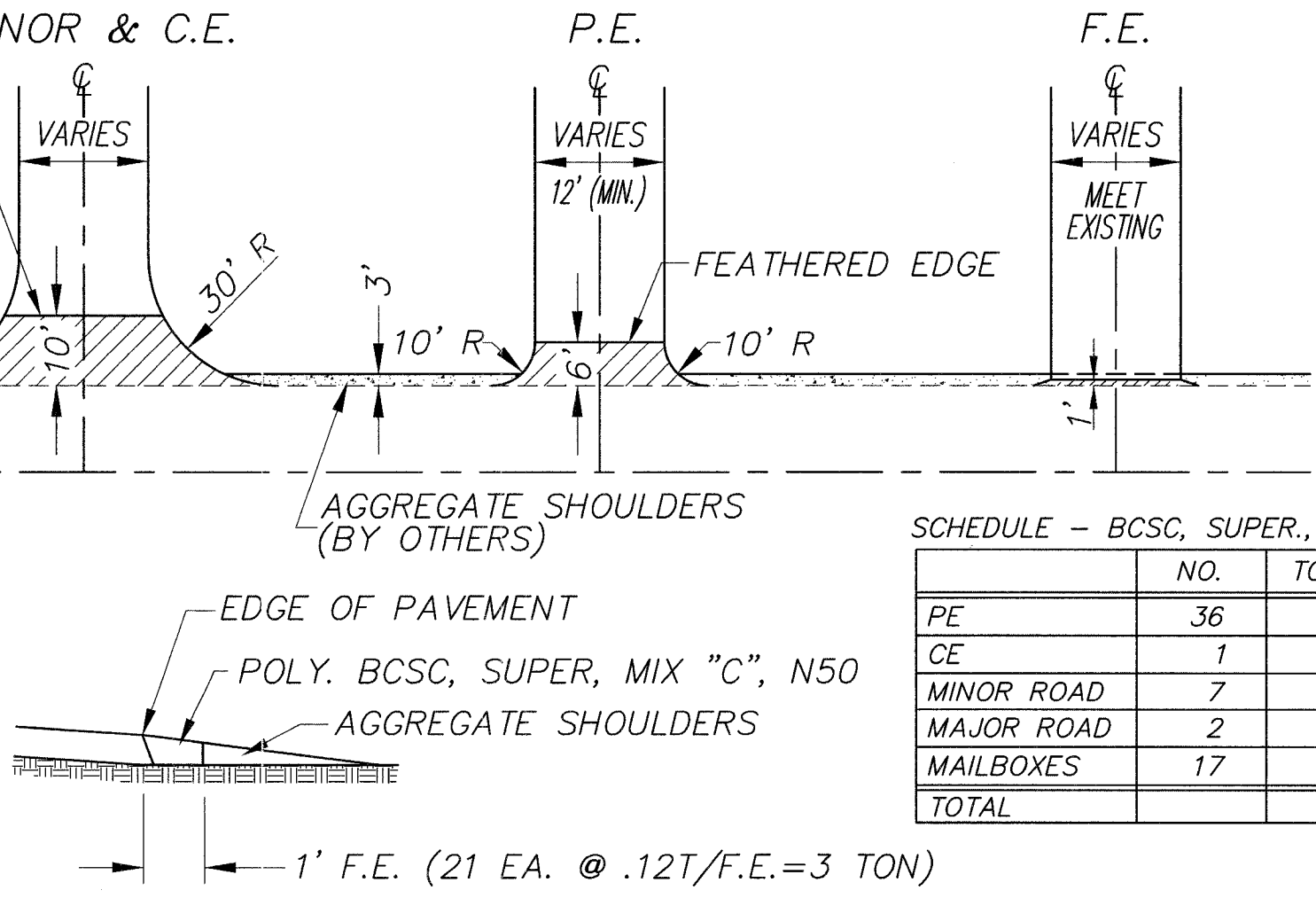
### BUTT JOINT DETAIL



### INTERSECTION DETAILS



### ENTRANCE DETAILS



SCHEDULE - BCSC, SUPER., MIX "C" N50

|            | NO. | TONS/ | TONS |
|------------|-----|-------|------|
| PE         | 36  | 1.5   | 54   |
| CE         | 1   | 6     | 6    |
| MINOR ROAD | 7   | 6     | 42   |
| MAJOR ROAD | 2   | 12    | 24   |
| MAILBOXES  | 17  | 2.4   | 41   |
| TOTAL      |     |       | 167  |