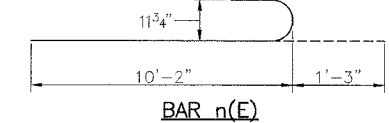
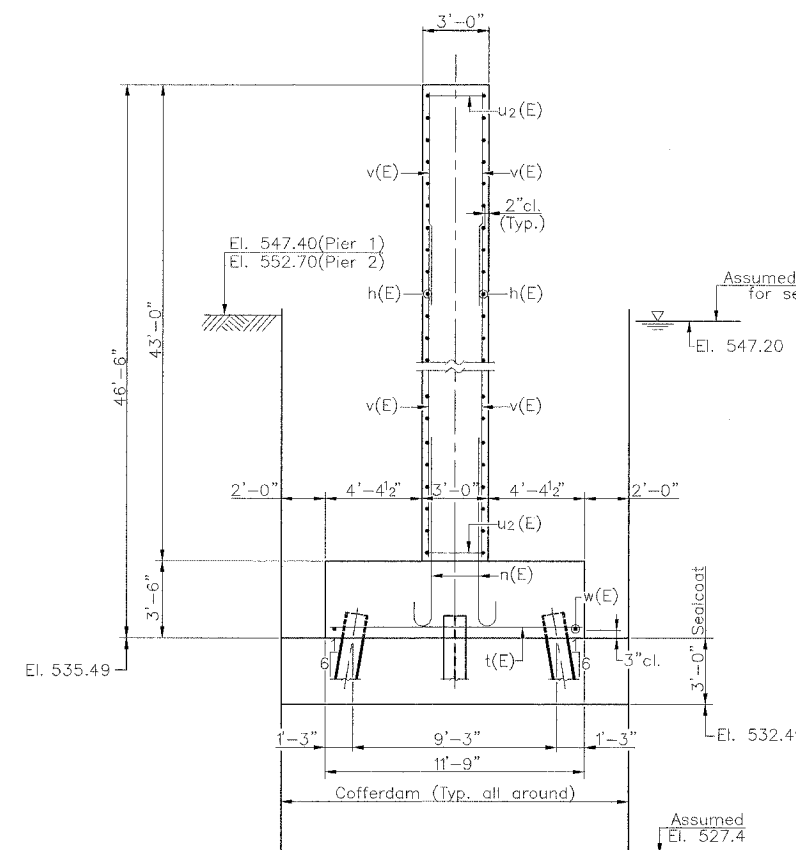
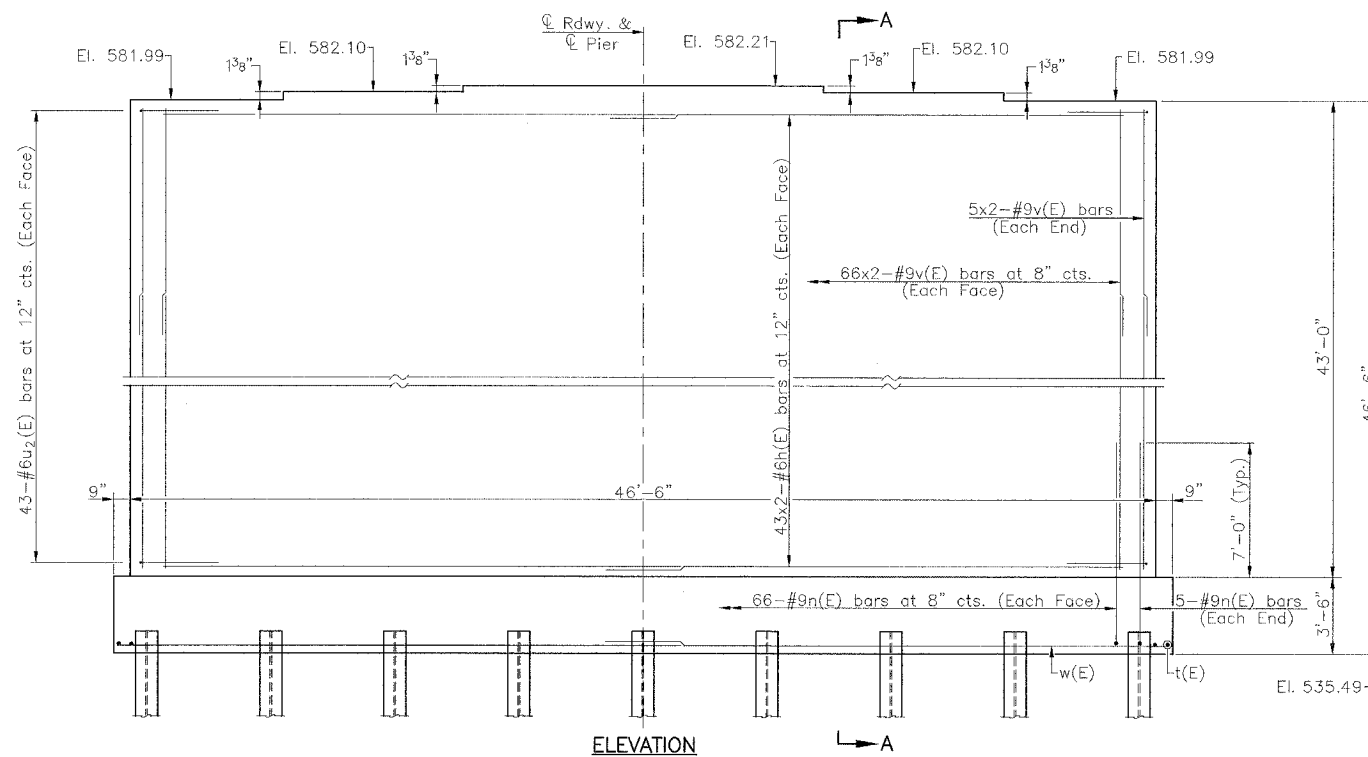
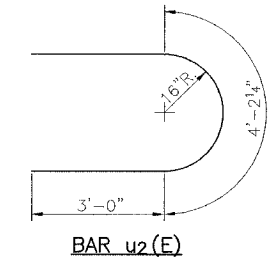
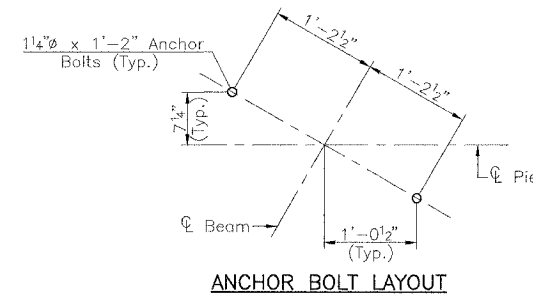
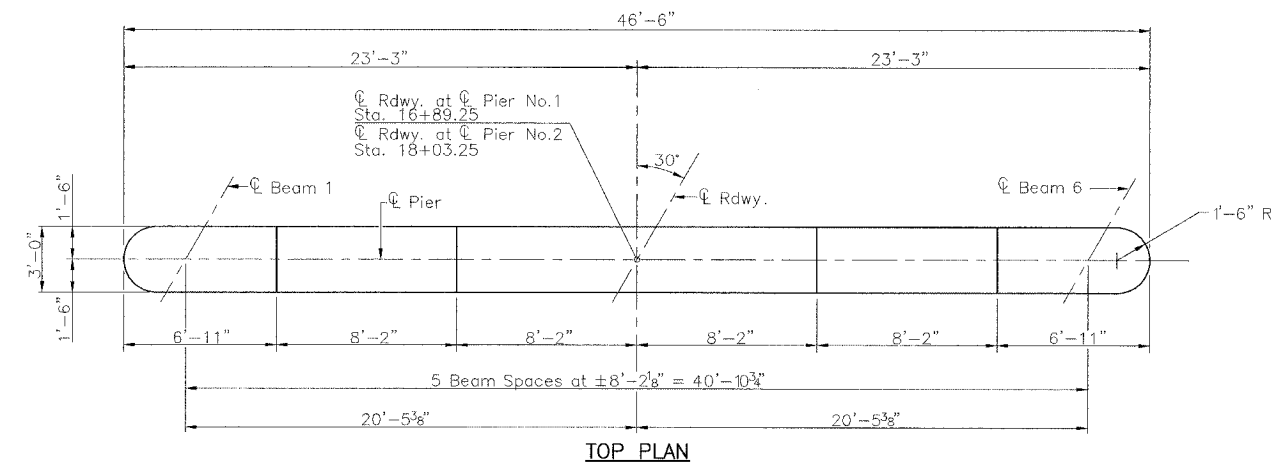


RTE.	SECTION	COUNTY	TOTAL SHEETS	SHEET NO.
C.H. 40	*	SANGAMON	33	19
PROJECT				

\* 00-00021-02-BR

**PILE DATA**

	Pier No. 1	Pier No. 2
Type:	HP 12x53	HP 12x53
Capacity:	59 <sup>t</sup> driven to 89 <sup>t</sup>	59 <sup>t</sup> driven to 89 <sup>t</sup>
Est. Length:	38'	54'
No. Req'd.:	26 + 1 Test Pile	26 + 1 Test Pile



**TWO PIERS BILL OF MATERIAL**

BAR	NO.	SIZE	LENGTH	SHAPE
h(E)	344	#6	23'-0"	—
n(E)	284	#9	11'-5"	—
t(E)	120	#8	11'-5"	—
u <sub>2</sub> (E)	172	#6	10'-2"	U
v(E)	568	#9	24'-11"	—
w(E)	48	#5	25'-1"	—
Concrete Structures				Cu. Yd. 585.7
Reinforcement Bars, Epoxy Coated Pound				78580
Furnishing Steel Piles HP 12x53				Foot 2392
Driving Steel Piles				Foot 2392
Test Pile, Steel HP 12x53				Each 2
Cofferdam Excavation				Cu. Yd. 1062
Cofferdam (Pier No. 1)				Each 1
Cofferdam (Pier No. 2)				Each 1
Seal Coat Concrete				Cu. Yd. 182.0

**MIN. BAR LAPS**

#5 Bars = 2'-2"  
 #6 Bars = 2'-6"  
 #9 Bars = 6'-11"

Notes:  
 Pour steps monolithically with pier.  
 All edges shall have standard 3/8" chamfers except as noted.  
 Reinforcement bars designated (E) shall be epoxy coated.

