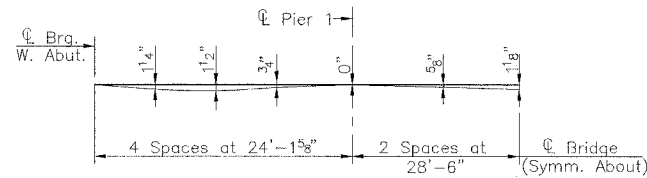


RTE.	SECTION	COUNTY	TOTAL SHEETS	SHEET NO.
C.H. 40	*	SANGAMON	33	10
PROJECT				

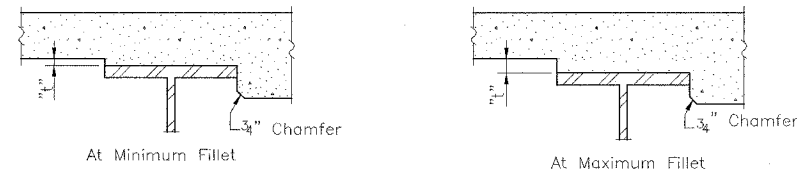
* 00-00021-02-BR



DEAD LOAD DEFLECTION DIAGRAM

(Includes weight of concrete, excluding beams).

Note: The above deflections are not to be used in the field if the engineer is working from the grade elevations adjusted for dead load deflections as shown below.



FILLET HEIGHTS

To determine "t": After all structural steel has been erected, elevations of the top flanges of the beams shall be taken at intervals shown below. These elevations subtracted from the Theoretical Grade Elevations Adjusted for Dead Load Deflections minus slab thickness, equals the fillet heights "t" above top flange of beams.

BEAM 4

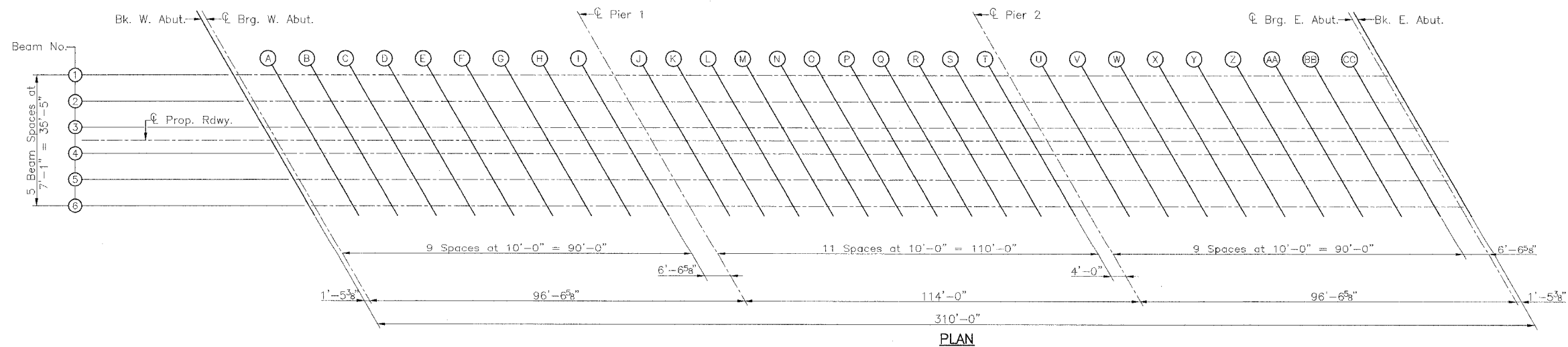
Location	Station	Offset	Theoretical Grade Elevation	Theoretical Grade Elevations Adjusted For Dead Load Deflection
Bk. W. Abut.	15+93.29	3.54	586.44	586.44
☉ Brg. W. Abut.	15+94.74	3.54	586.44	586.44
A	16+04.74	3.54	586.44	586.49
B	16+14.74	3.54	586.44	586.54
C	16+24.74	3.54	586.44	586.56
D	16+34.74	3.54	586.44	586.57
E	16+44.74	3.54	586.44	586.57
F	16+54.74	3.54	586.44	586.54
G	16+64.74	3.54	586.44	586.51
H	16+74.74	3.54	586.44	586.48
I	16+84.74	3.54	586.44	586.45
☉ Brg. Pier 1	16+91.29	3.54	586.44	586.44
J	17+01.29	3.54	586.44	586.45
K	17+11.29	3.54	586.44	586.47
L	17+21.29	3.54	586.44	586.50
M	17+31.29	3.54	586.44	586.52
N	17+41.29	3.54	586.44	586.54
O	17+51.29	3.54	586.44	586.54
P	17+61.29	3.54	586.44	586.53
Q	17+71.29	3.54	586.44	586.51
R	17+81.29	3.54	586.44	586.48
S	17+91.29	3.54	586.44	586.45
T	18+01.29	3.54	586.44	586.44
☉ Brg. Pier 2	18+05.29	3.54	586.44	586.44
U	18+15.29	3.54	586.44	586.46
V	18+25.29	3.54	586.44	586.49
W	18+35.29	3.54	586.44	586.52
X	18+45.29	3.54	586.44	586.55
Y	18+55.29	3.54	586.44	586.57
Z	18+65.29	3.54	586.44	586.57
AA	18+75.29	3.54	586.44	586.56
BB	18+85.29	3.54	586.44	586.52
CC	18+95.29	3.54	586.44	586.47
☉ Brg. E. Abut.	19+01.84	3.54	586.44	586.44
Bk. E. Abut.	19+03.29	3.54	586.44	586.44

BEAM 5

Location	Station	Offset	Theoretical Grade Elevation	Theoretical Grade Elevations Adjusted For Dead Load Deflection
Bk. W. Abut.	15+97.38	10.63	586.33	586.33
☉ Brg. W. Abut.	15+98.83	10.63	586.33	586.33
A	16+08.83	10.63	586.33	586.38
B	16+18.83	10.63	586.33	586.43
C	16+28.83	10.63	586.33	586.45
D	16+38.83	10.63	586.33	586.46
E	16+48.83	10.63	586.33	586.46
F	16+58.83	10.63	586.33	586.43
G	16+68.83	10.63	586.33	586.40
H	16+78.83	10.63	586.33	586.37
I	16+88.83	10.63	586.33	586.34
☉ Brg. Pier 1	16+95.38	10.63	586.33	586.33
J	17+05.38	10.63	586.33	586.34
K	17+15.38	10.63	586.33	586.36
L	17+25.38	10.63	586.33	586.39
M	17+35.38	10.63	586.33	586.41
N	17+45.38	10.63	586.33	586.43
O	17+55.38	10.63	586.33	586.43
P	17+65.38	10.63	586.33	586.42
Q	17+75.38	10.63	586.33	586.40
R	17+85.38	10.63	586.33	586.37
S	17+95.38	10.63	586.33	586.34
T	18+05.38	10.63	586.33	586.33
☉ Brg. Pier 2	18+09.38	10.63	586.33	586.33
U	18+19.38	10.63	586.33	586.35
V	18+29.38	10.63	586.33	586.38
W	18+39.38	10.63	586.33	586.41
X	18+49.38	10.63	586.33	586.44
Y	18+59.38	10.63	586.33	586.46
Z	18+69.38	10.63	586.33	586.46
AA	18+79.38	10.63	586.33	586.45
BB	18+89.38	10.63	586.33	586.41
CC	18+99.38	10.63	586.33	586.36
☉ Brg. E. Abut.	19+05.93	10.63	586.33	586.33
Bk. E. Abut.	19+07.38	10.63	586.33	586.33

BEAM 6

Location	Station	Offset	Theoretical Grade Elevation	Theoretical Grade Elevations Adjusted For Dead Load Deflection
Bk. W. Abut.	16+01.47	17.71	586.22	586.22
☉ Brg. W. Abut.	16+02.92	17.71	586.22	586.22
A	16+12.92	17.71	586.22	586.27
B	16+22.92	17.71	586.22	586.32
C	16+32.92	17.71	586.22	586.34
D	16+42.92	17.71	586.22	586.35
E	16+52.92	17.71	586.22	586.35
F	16+62.92	17.71	586.22	586.32
G	16+72.92	17.71	586.22	586.29
H	16+82.92	17.71	586.22	586.26
I	16+92.92	17.71	586.22	586.23
☉ Brg. Pier 1	16+99.47	17.71	586.22	586.22
J	17+09.47	17.71	586.22	586.23
K	17+19.47	17.71	586.22	586.25
L	17+29.47	17.71	586.22	586.28
M	17+39.47	17.71	586.22	586.30
N	17+49.47	17.71	586.22	586.32
O	17+59.47	17.71	586.22	586.32
P	17+69.47	17.71	586.22	586.31
Q	17+79.47	17.71	586.22	586.29
R	17+89.47	17.71	586.22	586.26
S	17+99.47	17.71	586.22	586.23
T	18+09.47	17.71	586.22	586.22
☉ Brg. Pier 2	18+13.47	17.71	586.22	586.22
U	18+23.47	17.71	586.22	586.24
V	18+33.47	17.71	586.22	586.27
W	18+43.47	17.71	586.22	586.30
X	18+53.47	17.71	586.22	586.33
Y	18+63.47	17.71	586.22	586.35
Z	18+73.47	17.71	586.22	586.35
AA	18+83.47	17.71	586.22	586.34
BB	18+93.47	17.71	586.22	586.30
CC	19+03.47	17.71	586.22	586.25
☉ Brg. E. Abut.	19+10.02	17.71	586.22	586.22
Bk. E. Abut.	19+11.47	17.71	586.22	586.22



TOP OF SLAB ELEVATIONS
C.H. 40 OVER HORSE CREEK
SECTION 00-00021-02-BR
SANGAMON COUNTY