

RTE.	SECTION	COUNTY	TOTAL SHEETS	SHEET NO.
C.H. 40	*	SANGAMON	33	6

PROJECT \* 00-00021-02-BR

**CURVE #1 DATA**

P.I. Sta. 50+25  
 (C Sta. 18+50 115' Lt.)  
 \* Δ = 73°04'20"  
 D = 283'01'01"  
 T = 15.00'  
 R = 20.24'  
 L = 25.82'  
 E = 4.95'

P.C. Sta. 50+00  
 (C Sta. 18+50 130' Lt.)  
 P.T. Sta. 50+25.82

**CURVE #2 DATA**

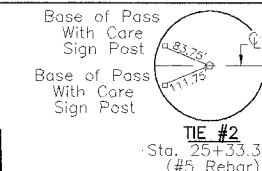
P.I. Sta. 52+51.24  
 \*\* Δ = 16°55'40"  
 D = 24'21'36"  
 T = 35.00'  
 R = 235.20'  
 L = 69.49'  
 E = 2.59'

P.C. Sta. 52+16.24  
 P.T. Sta. 52+85.73

**CURVE #3 DATA**

P.I. Sta. 53+70.73  
 (C Sta. 22+00 45' Lt.)  
 \*\*\* Δ = 90°00'00"  
 D = 229'11'00"  
 T = 25.00'  
 R = 25.00'  
 L = 39.27'  
 E = 10.36'

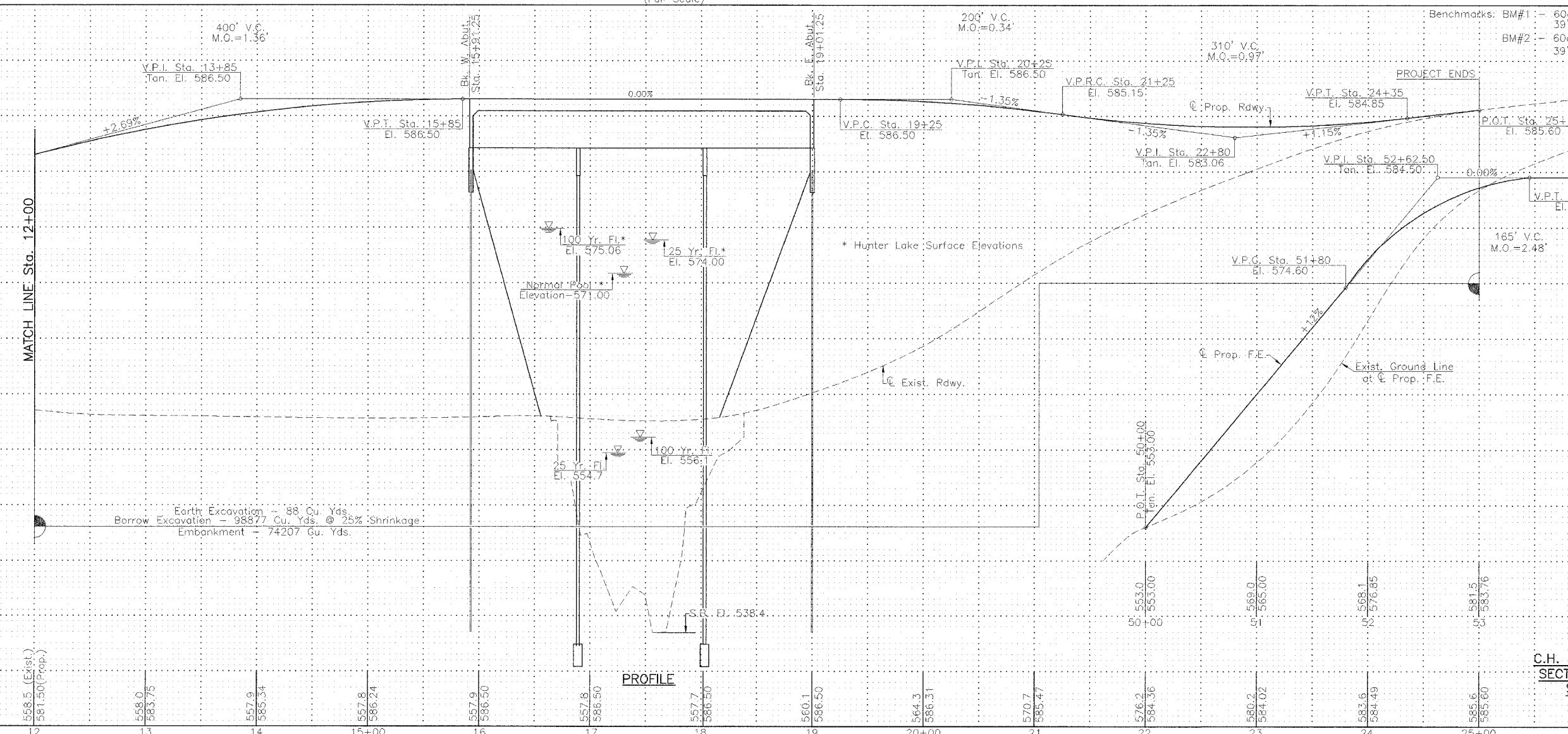
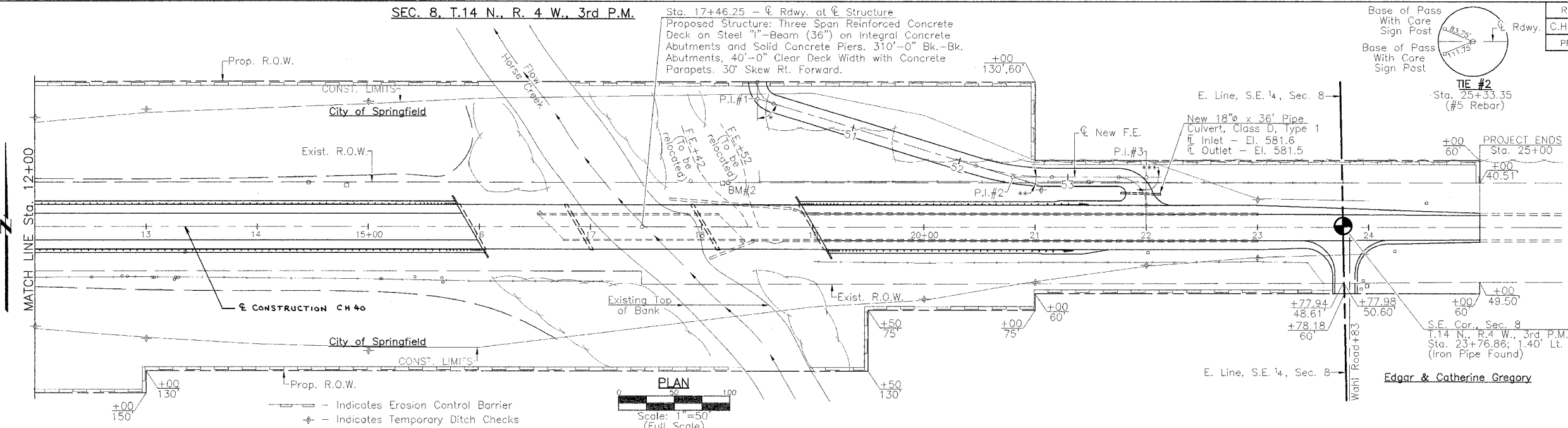
P.C. Sta. 53+45.73  
 (C Sta. 22+00 20' Lt.)  
 P.T. Sta. 53+85.00



TIE #2  
 Sta. 25+33.35  
 (#5 Rebar)

**SEC. 8, T.14 N., R. 4 W., 3rd P.M.**

Sta. 17+46.25 - C Rdwy. at C Structure  
 Proposed Structure: Three Span Reinforced Concrete Deck on Steel "I"-Beam (36") on Integral Concrete Abutments and Solid Concrete Piers. 310'-0" Bk.-Bk. Abutments, 40'-0" Clear Deck Width with Concrete Parapets. 30' Skew Rt. Forward.



**PLAN & PROFILE**  
 C.H. 40 OVER HORSE CREEK  
 SECTION 00-00021-02-BR  
 SANGAMON COUNTY

FILE NAME: SCCHOPP (REV. 3/11/05)