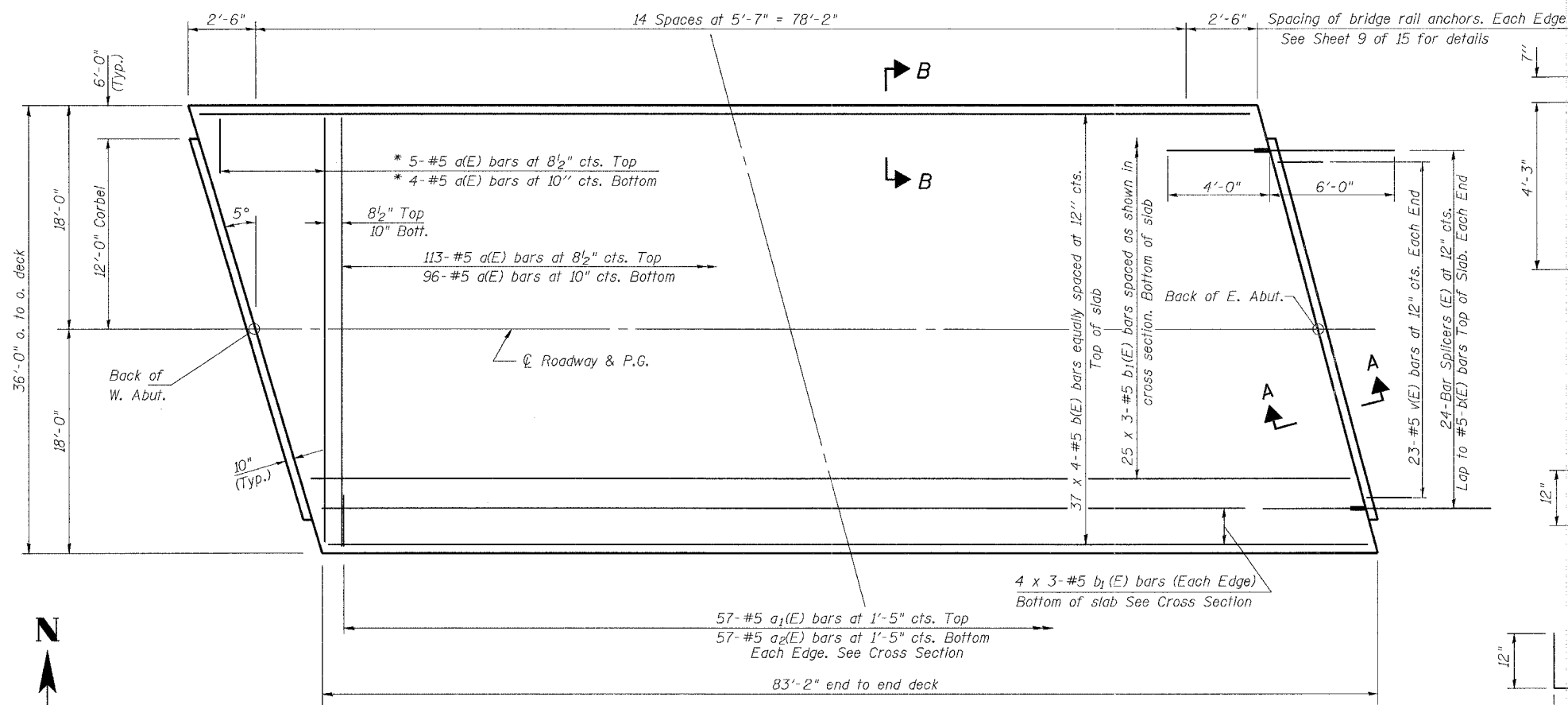
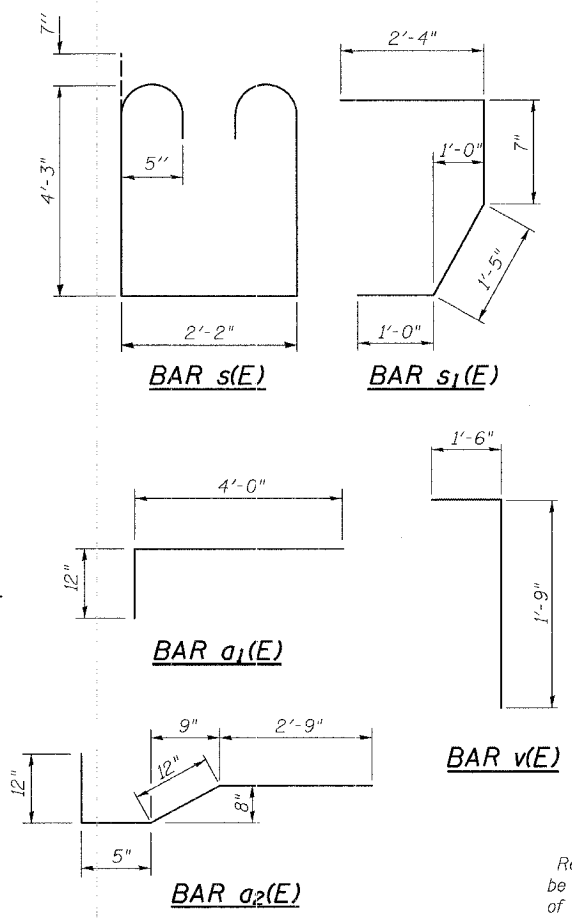


FAS RTE.	SECTION	COUNTY	TOTAL SHEETS	SHEET NO.
732		MACOUPIN	15	6

FED. ROAD DIST. NO. 1 ILLINOIS FED. AID PROJECT
 •02-00083-00-BR



PLAN



**SUPERSTRUCTURE
 BILL OF MATERIAL**

Bar	No.	Size	Length(m)	Shape
a(E)	218	#5	35'-8"	—
a1(E)	114	#5	5'-0"	—
a2(E)	114	#5	5'-2"	—
b(E)	148	#5	22'-1"	—
b1(E)	99	#5	28'-11"	—
m(E)	4	#6	23'-11"	—
m1(E)	6	#6	35'-11"	—
m2(E)	24	#6	9'-0"	—
m3(E)	10	#6	4'-1"	—
m4(E)	4	#6	1'-1"	—
s(E)	58	#4	11'-10"	—
s1(E)	48	#5	5'-4"	—
v(E)	46	#5	3'-3"	—
Reinforcement Bars, Epoxy Coated Concrete Superstructure			Pound	17460
Bar Splicers			Cu. Yd.	108.3
			Each	48

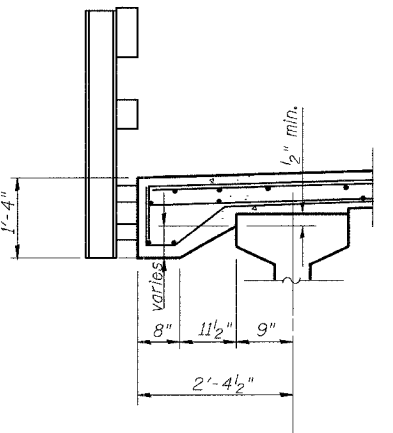
NOTES

Reinforcement bars in the top of the deck shall be placed with a 1/2" minimum clearance in the area of the rail post anchor devices. The studs of the anchor devices shall be placed below the top reinforcement bars and the outermost longitudinal reinforcement bar shall be placed directly above the studs of the rail post anchor device. See sheet #7 of 15 for superstructure details. See sheet #7 of 15 for section A-A. Reinforcement bars designated (E) shall be epoxy coated. Bars indicated thus 20 x 3-#5 etc. indicates 20 lines of bars with 3 lengths per line.

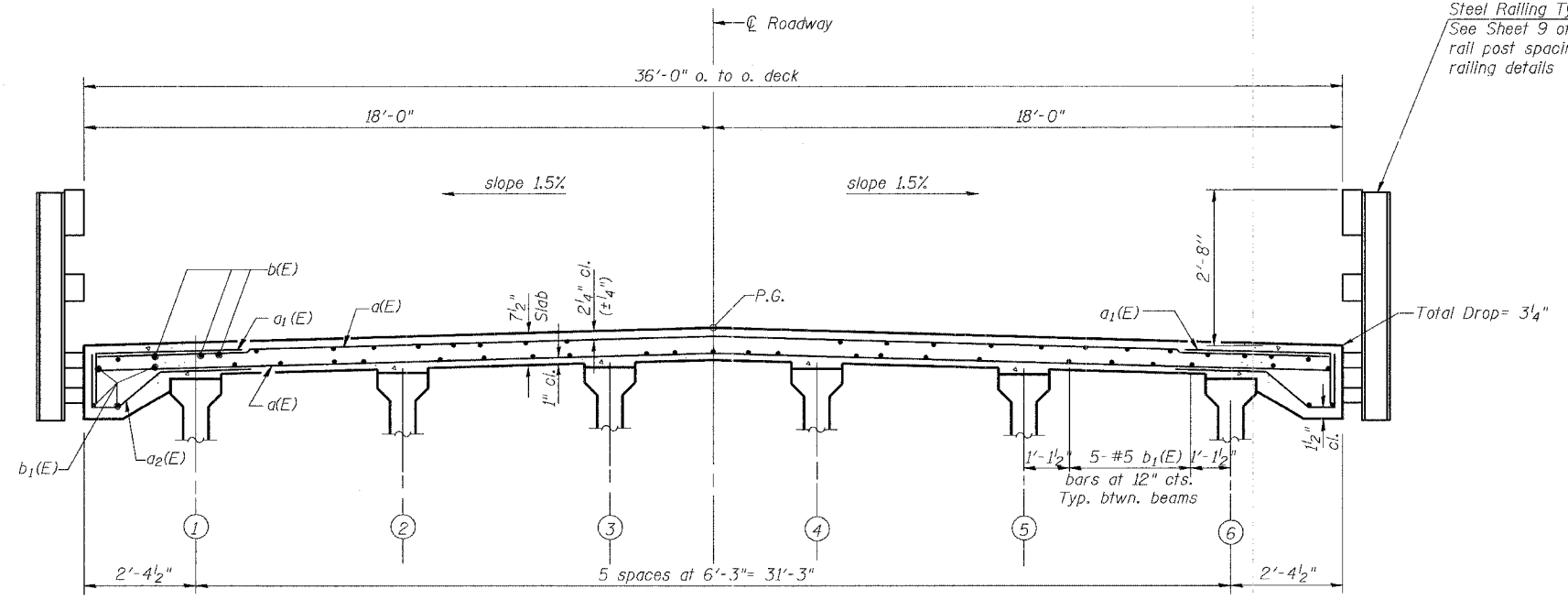
MIN. BAR LAPS

#5 = 1'-8"
 #6 = 2'-9"

* Order a(E) bars full length. Cut to fit skew and use remainder of bars in opposite end.



SECTION B-B



CROSS SECTION
 (Looking East)
 (Dimensions are at right Ls to the roadway)

Steel Railing Type SM. See Sheet 9 of 15 for rail post spacing and railing details.

PI-1-R(15) 3-1-94

SHEET TITLE		SUPERSTRUCTURE	
PROJECT	C.H. 12 OVER SOLOMON CREEK FAS ROUTE 732 SEC. 02-00083-00-BR MACOUPIN COUNTY STATION 9+90.00 STRUCTURE NUMBER 059-3465	PROJECT NO.	03016
SCALE		DATE	2/16/04
DRAWN BY		CHECKED BY	TFG
		MRL/REG/MCB	
COOMBE-BLOXDORF P.C. Engineers / Land Surveyors Springfield, Illinois Design Firm License No. 184-002703		DRAWING NO.	6
		OF 15	SHTS