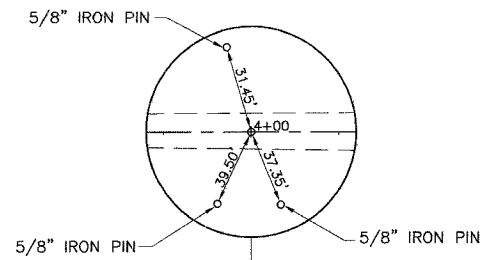
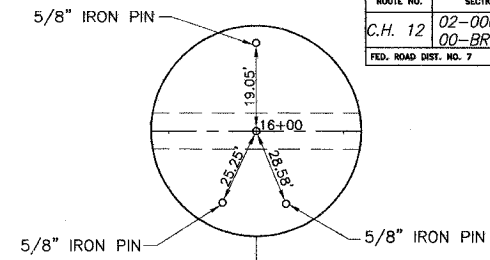


SE 1/4 SEC. 32, T.12.N., R.8.W., 3RD P.M.
CELIA DUGGER

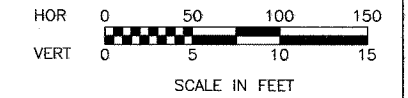
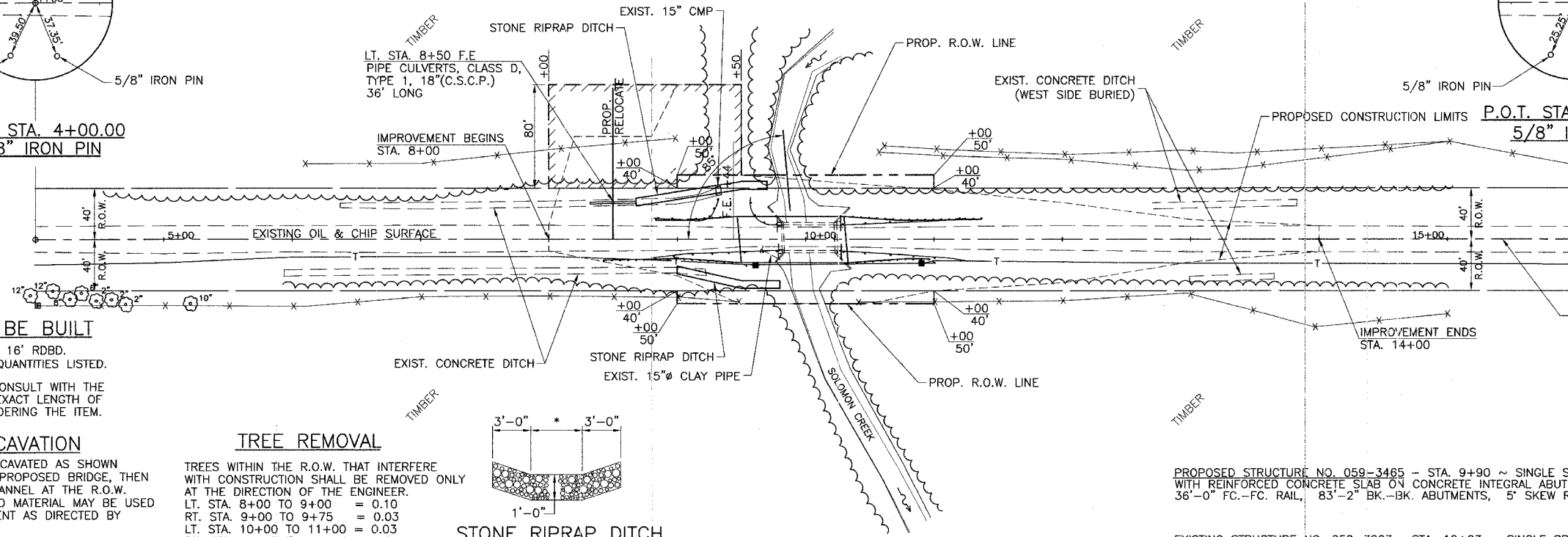
ROUTE NO.	SECTION	COUNTY	TOTAL SHEETS	SHEET NO.
C.H. 12	02-00083-00-BR	MACOUPIN	15	3
FED. ROAD DIST. NO. 7		ILLINOIS	FED. AID PROJECT-	



P.O.T. STA. 4+00.00
5/8" IRON PIN



P.O.T. STA. 16+00.00
5/8" IRON PIN



- LEGEND**
- IRON PIN SET
 - POWER POLE
 - STREAM
 - ⊞ TELEPHONE SPLICE BOX
 - ⊥ SIGN
 - ⊙ FIELD TILE MANHOLE
 - ⊗ FENCE POST

ENTRANCES TO BE BUILT

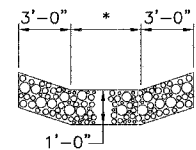
LT. STA. 8+50 F.E. -9.0% 16' RDBD.
EARTHWORK INCLUDED IN QUANTITIES LISTED.
THE CONTRACTOR SHALL CONSULT WITH THE ENGINEER IN REGARD TO EXACT LENGTH OF PIPE CULVERT BEFORE ORDERING THE ITEM.

CHANNEL EXCAVATION

THE CHANNEL SHALL BE EXCAVATED AS SHOWN WITHIN THE LIMITS OF THE PROPOSED BRIDGE, THEN TAPER TO THE EXISTING CHANNEL AT THE R.O.W. LINES. SUITABLE EXCAVATED MATERIAL MAY BE USED IN THE ROADWAY EMBANKMENT AS DIRECTED BY THE ENGINEER.
CHANNEL EXCAVATION = 680 CU. YD.

TREE REMOVAL

TREES WITHIN THE R.O.W. THAT INTERFERE WITH CONSTRUCTION SHALL BE REMOVED ONLY AT THE DIRECTION OF THE ENGINEER.
LT. STA. 8+00 TO 9+00 = 0.10
RT. STA. 9+00 TO 9+75 = 0.03
LT. STA. 10+00 TO 11+00 = 0.03
RT. STA. 10+17 TO 11+00 = 0.04
TREE REMOVAL, ACRES = 0.20 ACRE



STONE RIPRAP DITCH

LT. STA. 8+68 TO 9+70
RT. STA. 9+00 TO 9+80
ESTIMATED QUANTITY = 95 TON
* WIDTH VARIES AS SHOWN ON STATION CROSS SECTIONS.

WARREN PENCE
NE 1/4 SEC. 5, T.11N., R.8.W., 3RD P.M.

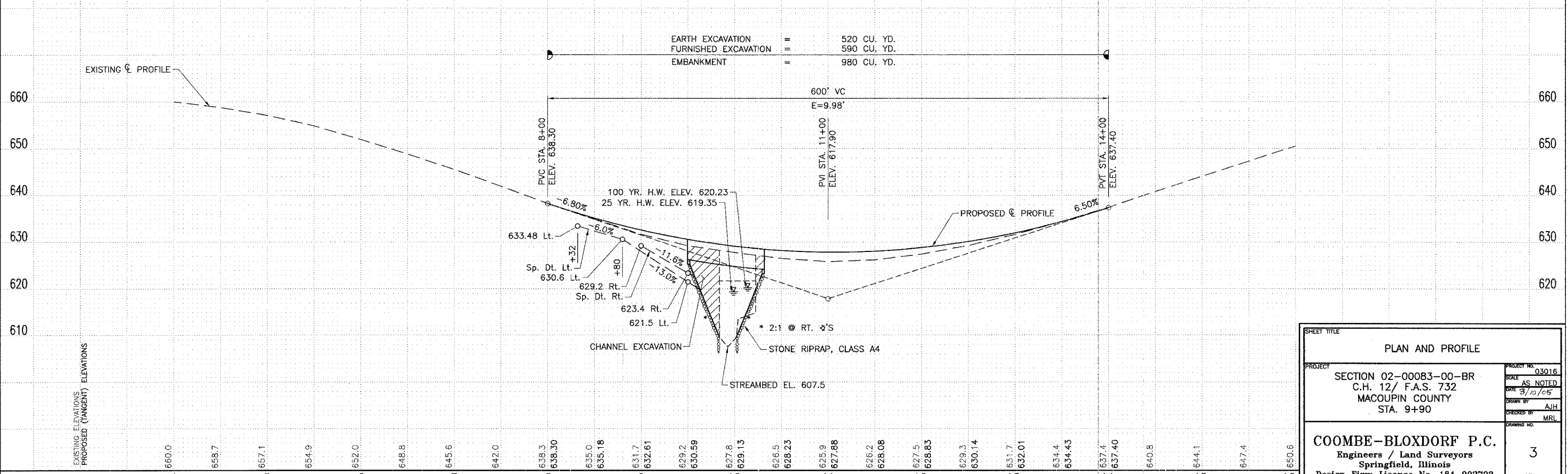
PROPOSED STRUCTURE NO. 059-3465 - STA. 9+90 ~ SINGLE SPAN P.P.C. I-BEAM WITH REINFORCED CONCRETE SLAB ON CONCRETE INTEGRAL ABUTMENTS 36'-0" FC.-FC. RAIL, 83'-2" BK.-BK. ABUTMENTS, 5' SKEW RT. FWD.

EXISTING STRUCTURE NO. 059-3003 - STA. 10+03 ~ SINGLE SPAN THRU GIRDER BRIDGE WITH CONC. PARAPETS ON CLOSED CONC. ABUTMENTS WITH CONCRETE WINGS, 38.7' F.C.-F.C. ABUTS., 20.1' F.C.-F.C. PARAPETS, 0' SKEW

REMOVAL OF EXISTING STRUCTURES = 1 EACH

INDICATES TEMPORARY CONSTRUCTION EASEMENT TO BE ACQUIRED

BM #1 (CB-1) - CHISELED SQUARE IN S.W. WINGWALL
16.9' RT. STA. 9+77
WALL. ELEV. 626.85



SHEET TITLE	
PLAN AND PROFILE	
PROJECT	SECTION 02-00083-00-BR C.H. 12/ F.A.S. 732 MACOUPIN COUNTY STA. 9+90
DATE	3/10/05
DRAWN BY	AJH
CHECKED BY	MRL
DRAWING NO.	3
COOMBE-BLOXDORF P.C. Engineers / Land Surveyors Springfield, Illinois Design Firm License No. 184-002703	
OF 15 SHEETS	