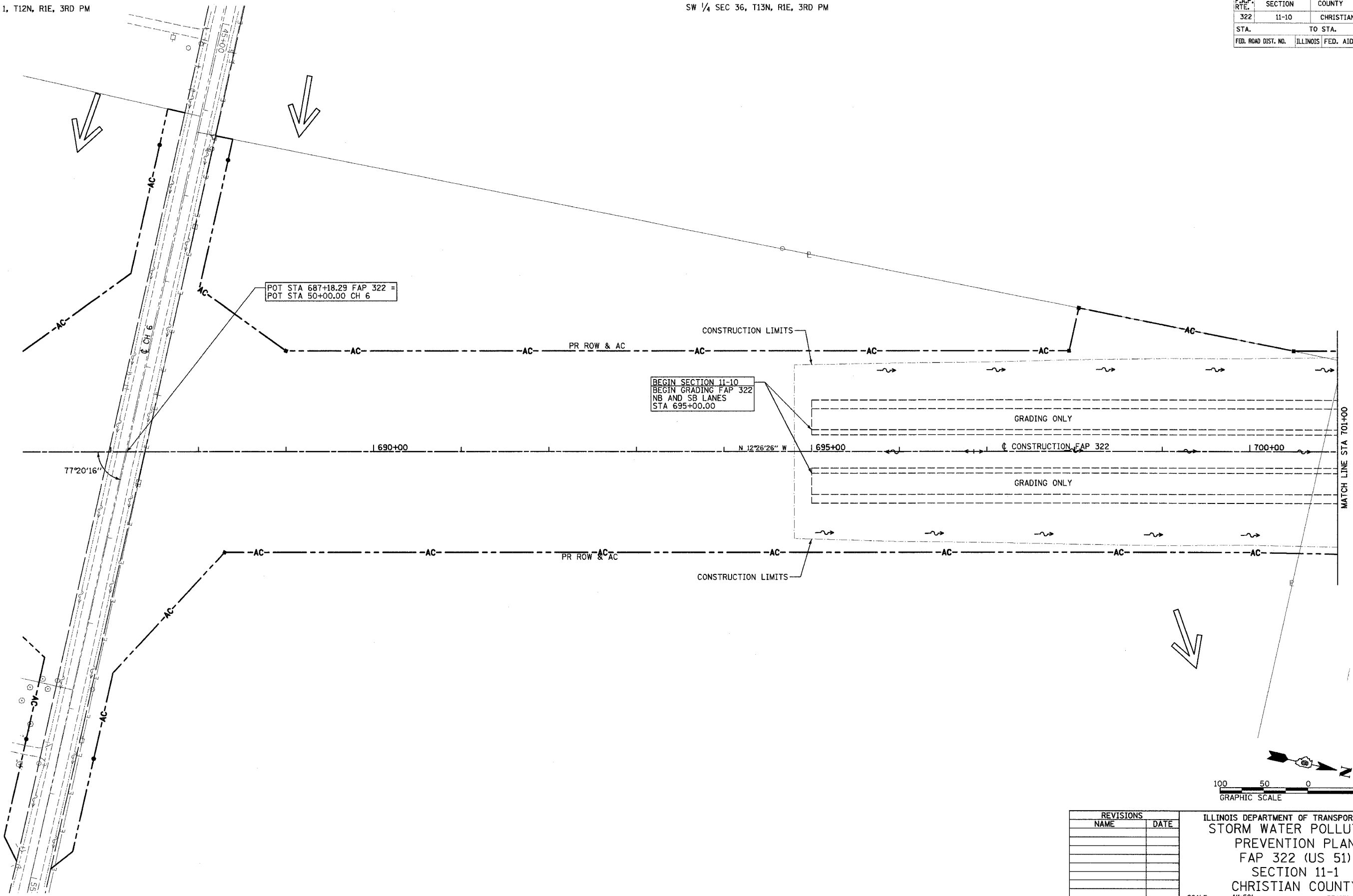


NW 1/4 SEC 1, T12N, R1E, 3RD PM

SW 1/4 SEC 36, T13N, R1E, 3RD PM

F.A.P. RTE.	SECTION	COUNTY	TOTAL SHEETS	SHEET NO.
322	11-10	CHRISTIAN	310	139
STA.		TO STA.		
FED. ROAD DIST. NO.	ILLINOIS	FED. AID PROJECT		



3/25/2005

g:\2111.dwg

SW 1/4 SEC 36, T13N, R1E, 3RD PM

REVISIONS	
NAME	DATE

ILLINOIS DEPARTMENT OF TRANSPORTATION
 STORM WATER POLLUTION
 PREVENTION PLAN
 FAP 322 (US 51)
 SECTION 11-1
 CHRISTIAN COUNTY

SCALE: 1"=50'
 DATE: 3/18/05

DRAWN BY: BDJ
 CHECKED BY: SEB

FAP 322 (US 51) STA 686+00 TO STA 701+00