

F.A.P. RYE.	SECTION	COUNTY	TOTAL SHEETS	SHEET NO.
322	11-10	CHRISTIAN	310	133
STA.		TO STA.		
FED. ROAD DIST. NO.		ILLINOIS FED. AID PROJECT		

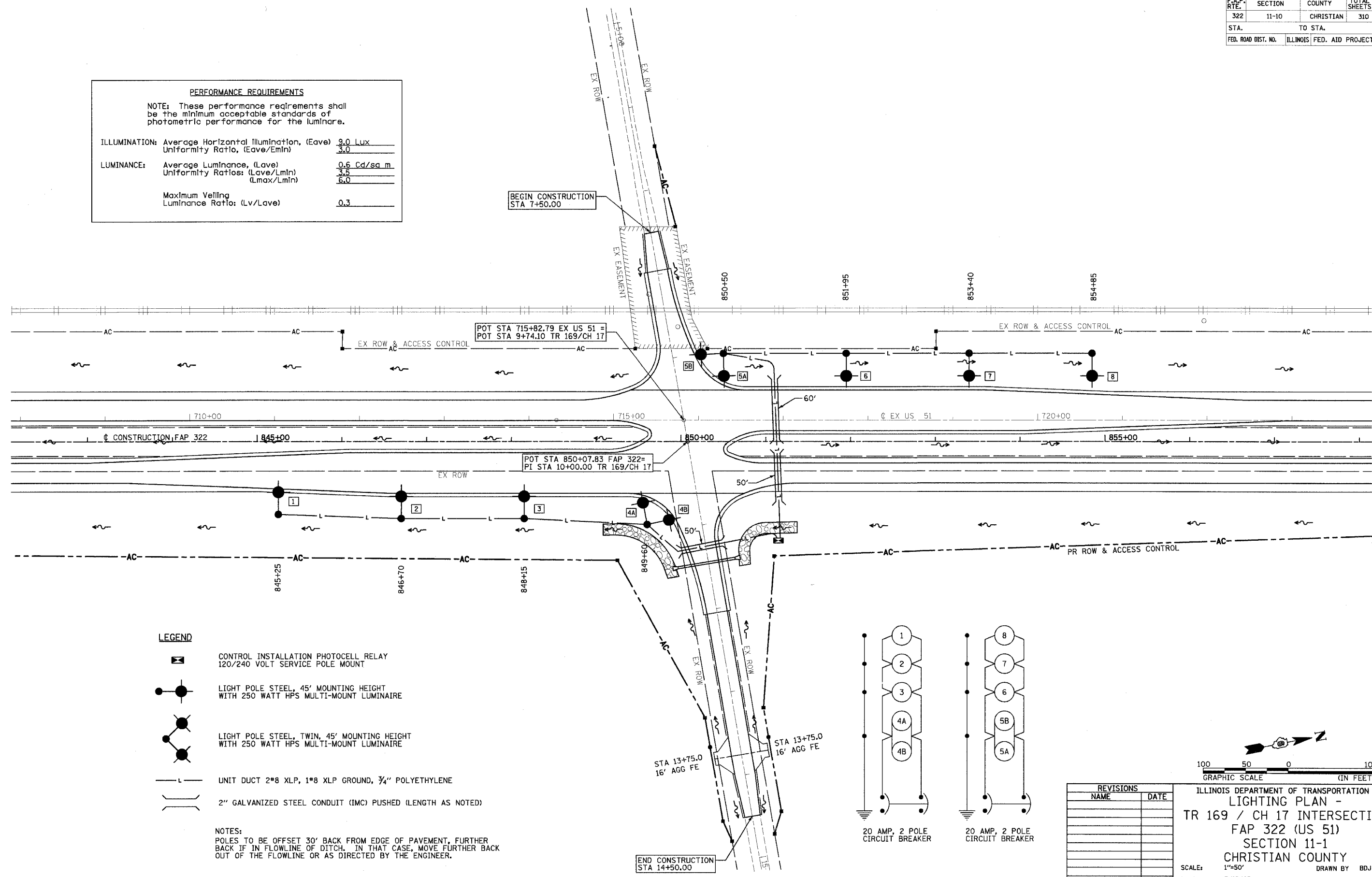
**PERFORMANCE REQUIREMENTS**

NOTE: These performance requirements shall be the minimum acceptable standards of photometric performance for the luminaire.

ILLUMINATION: Average Horizontal Illumination, (Eave) 3.0 Lux  
 Uniformity Ratio, (Eave/Emin) 3.0

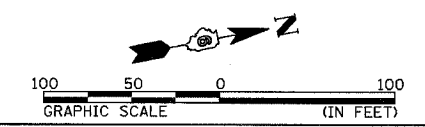
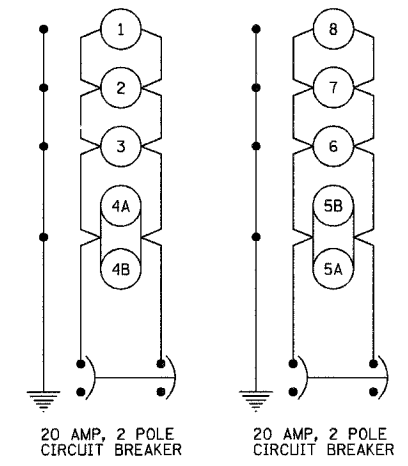
LUMINANCE: Average Luminance, (Lave) 0.6 Cd/sq m  
 Uniformity Ratios: (Lave/Lmin) 3.5  
 (Lmax/Lmin) 6.0

Maximum Veiling Luminance Ratio: (Lv/Lave) 0.3



- LEGEND**
- CONTROL INSTALLATION PHOTOCELL RELAY  
120/240 VOLT SERVICE POLE MOUNT
  - LIGHT POLE STEEL, 45' MOUNTING HEIGHT  
WITH 250 WATT HPS MULTI-MOUNT LUMINAIRE
  - LIGHT POLE STEEL, TWIN, 45' MOUNTING HEIGHT  
WITH 250 WATT HPS MULTI-MOUNT LUMINAIRE
  - UNIT DUCT 2\*8 XLP, 1\*8 XLP GROUND, 3/4" POLYETHYLENE
  - 2" GALVANIZED STEEL CONDUIT (IMC) PUSHED (LENGTH AS NOTED)

NOTES:  
 POLES TO BE OFFSET 30' BACK FROM EDGE OF PAVEMENT, FURTHER BACK IF IN FLOWLINE OF DITCH. IN THAT CASE, MOVE FURTHER BACK OUT OF THE FLOWLINE OR AS DIRECTED BY THE ENGINEER.



REVISIONS	
NAME	DATE

ILLINOIS DEPARTMENT OF TRANSPORTATION  
 LIGHTING PLAN -  
 TR 169 / CH 17 INTERSECTION  
 FAP 322 (US 51)  
 SECTION 11-1  
 CHRISTIAN COUNTY

SCALE: 1"=50'  
 DATE: 3/18/05

DRAWN BY: BDJ  
 CHECKED BY: SEB

3/29/2005