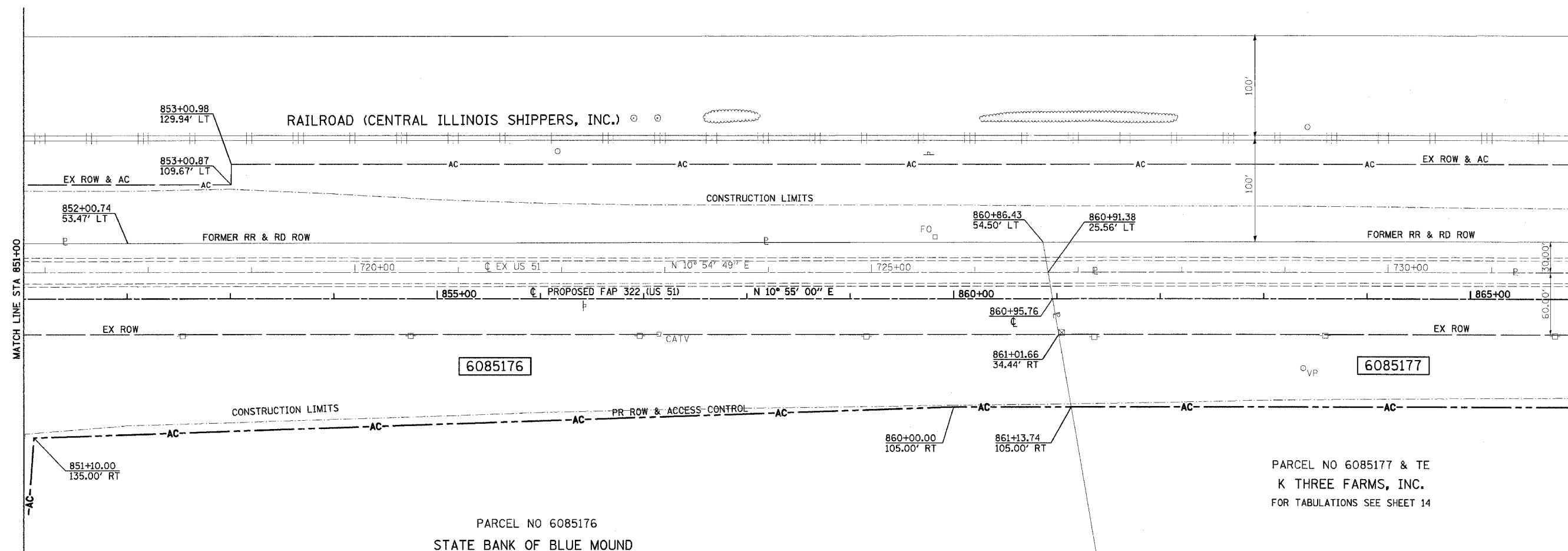


STATE OF ILLINOIS
DEPARTMENT OF TRANSPORTATION

F.A.P. RTE.	SECTION	COUNTY	TOTAL SHEETS	SHEET NO.
322	11-1	CHRISTIAN	310	91
STA.		TO STA.		
FED. ROAD DIST. NO.	ILLINOIS	FED. AID PROJECT		

SW 1/4 SEC 13, T13 N, R1 E, 3RD PM

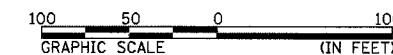


SW 1/4 SEC 13, T13 N, R1 E, 3RD PM

N 01° 13' 33" W
2,665.94'
EAST LINE SW 1/4 SECTION 13
WEST LINE SE 1/4 SECTION 13

NOTES:
BEARINGS ARE BASED ON THE ILLINOIS STATE PLANE COORDINATE SYSTEM, NAD83 1986 - WEST ZONE SURVEYED IN ENGLISH.

PLAT DISTANCES AND STATIONING ARE IN GRID ENGLISH. TO CONVERT TO GROUND DIVIDE BY GRID FACTOR. GRID FACTOR = 1.00003150



RIGHT OF WAY PLANS

ROUTE F.A.P. 322 (US 51)
SECTION 11-1
PROJECT
COUNTY CHRISTIAN
JOB NO. R-96-008-95
STA 851+00 TO STA 866+00
SCALE 1 = 50'

SHEET NO. 13 OF 24

4/23/13 PM
3/24/2005
p:\011\lan\0102320\map\01plan\01\row35.dgn