

F.A.P. RTE.	SECTION	COUNTY	TOTAL SHEETS	SHEET NO.
322	11-1	CHRISTIAN	310	87
STA.		TO STA.		
FED. ROAD DIST. NO.		ILLINOIS FED. AID PROJECT		

STATE OF ILLINOIS
DEPARTMENT OF TRANSPORTATION

NW 1/4 SEC 25, T13 N, R1 E, 3RD PM

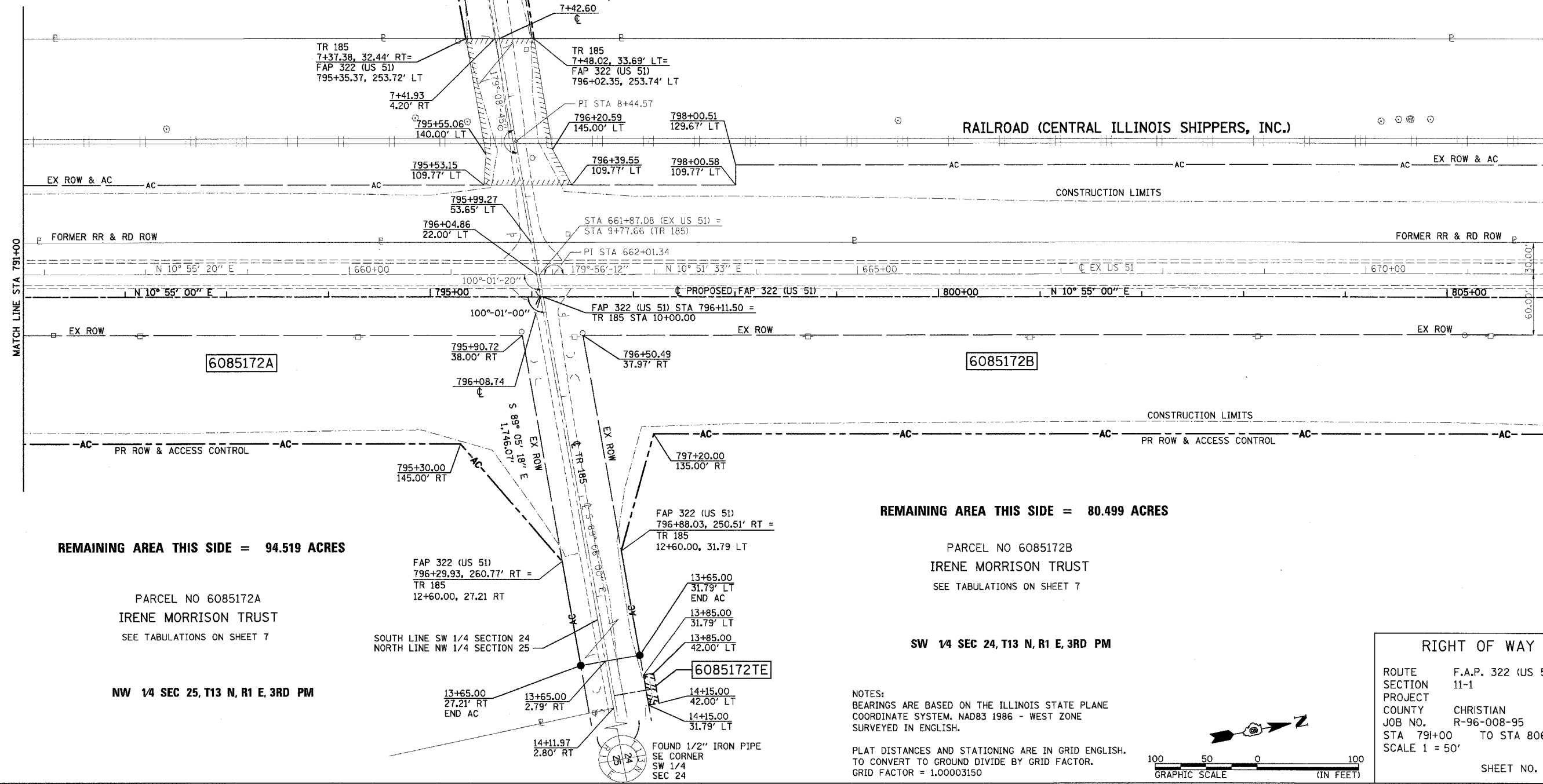
PARCEL NO 6085172C
IRENE MORRISON TRUST
SEE TABULATIONS ON SHEET 7

REMAINING AREA THIS SIDE = 15.790 ACRES

SW 1/4 SEC 24, T13 N, R1 E, 3RD PM

PARCEL NO 6085172D
IRENE MORRISON TRUST
SEE TABULATIONS ON SHEET 7

REMAINING AREA THIS SIDE = 24.479 ACRES



6085172A

6085172B

6085172E

REMAINING AREA THIS SIDE = 94.519 ACRES

PARCEL NO 6085172A
IRENE MORRISON TRUST
SEE TABULATIONS ON SHEET 7

NW 1/4 SEC 25, T13 N, R1 E, 3RD PM

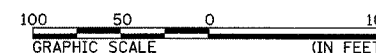
REMAINING AREA THIS SIDE = 80.499 ACRES

PARCEL NO 6085172B
IRENE MORRISON TRUST
SEE TABULATIONS ON SHEET 7

SW 1/4 SEC 24, T13 N, R1 E, 3RD PM

NOTES:
BEARINGS ARE BASED ON THE ILLINOIS STATE PLANE
COORDINATE SYSTEM, NAD83 1986 - WEST ZONE
SURVEYED IN ENGLISH.

PLAT DISTANCES AND STATIONING ARE IN GRID ENGLISH.
TO CONVERT TO GROUND DIVIDE BY GRID FACTOR.
GRID FACTOR = 1.00003150



RIGHT OF WAY PLANS

ROUTE F.A.P. 322 (US 51)
SECTION 11-1
PROJECT
COUNTY CHRISTIAN
JOB NO. R-96-008-95
STA 791+00 TO STA 806+00
SCALE 1 = 50'