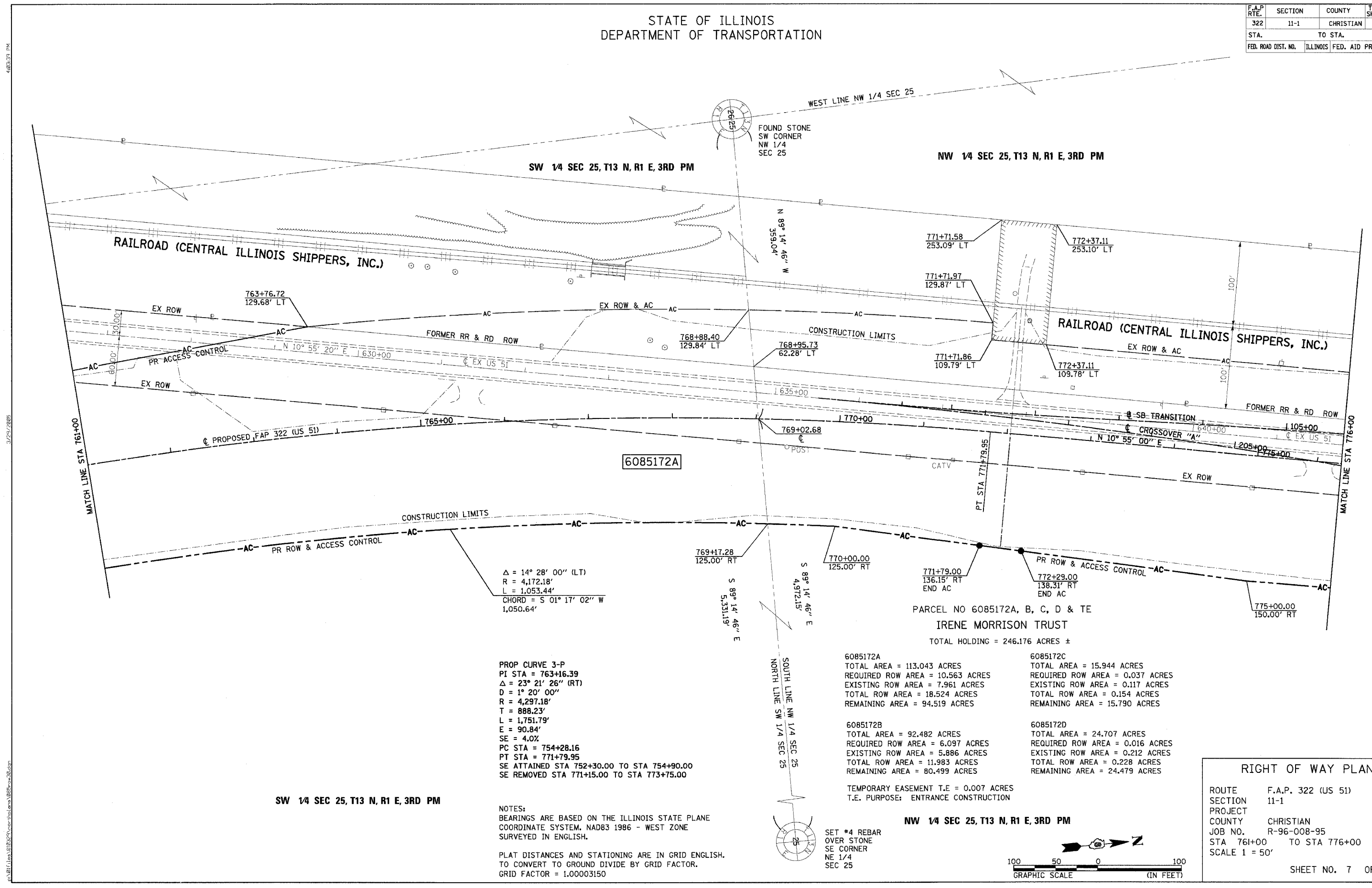


STATE OF ILLINOIS
DEPARTMENT OF TRANSPORTATION

F.A.P. RTE.	SECTION	COUNTY	TOTAL SHEETS	SHEET NO.
322	11-1	CHRISTIAN	310	85
STA.	TO STA.			
FED. ROAD DIST. NO.	ILLINOIS	FED. AID PROJECT		



PROP CURVE 3-P
 PI STA = 763+16.39
 $\Delta = 23^\circ 21' 26''$ (RT)
 $D = 1^\circ 20' 00''$
 $R = 4,297.18'$
 $T = 888.23'$
 $L = 1,751.79'$
 $E = 90.84'$
 $SE = 4.0\%$
 PC STA = 754+28.16
 PT STA = 771+79.95
 SE ATTAINED STA 752+30.00 TO STA 754+90.00
 SE REMOVED STA 771+15.00 TO STA 773+75.00

NOTES:
 BEARINGS ARE BASED ON THE ILLINOIS STATE PLANE COORDINATE SYSTEM, NAD83 1986 - WEST ZONE SURVEYED IN ENGLISH.
 PLAT DISTANCES AND STATIONING ARE IN GRID ENGLISH. TO CONVERT TO GROUND DIVIDE BY GRID FACTOR. GRID FACTOR = 1.00003150

6085172A
 TOTAL AREA = 113.043 ACRES
 REQUIRED ROW AREA = 10.563 ACRES
 EXISTING ROW AREA = 7.961 ACRES
 TOTAL ROW AREA = 18.524 ACRES
 REMAINING AREA = 94.519 ACRES

6085172B
 TOTAL AREA = 92.482 ACRES
 REQUIRED ROW AREA = 6.097 ACRES
 EXISTING ROW AREA = 5.886 ACRES
 TOTAL ROW AREA = 11.983 ACRES
 REMAINING AREA = 80.499 ACRES

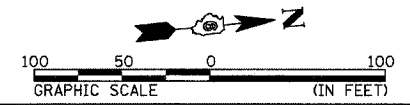
6085172C
 TOTAL AREA = 15.944 ACRES
 REQUIRED ROW AREA = 0.037 ACRES
 EXISTING ROW AREA = 0.117 ACRES
 TOTAL ROW AREA = 0.154 ACRES
 REMAINING AREA = 15.790 ACRES

6085172D
 TOTAL AREA = 24.707 ACRES
 REQUIRED ROW AREA = 0.016 ACRES
 EXISTING ROW AREA = 0.212 ACRES
 TOTAL ROW AREA = 0.228 ACRES
 REMAINING AREA = 24.479 ACRES

PARCEL NO 6085172A, B, C, D & TE
 IRENE MORRISON TRUST
 TOTAL HOLDING = 246.176 ACRES ±

TEMPORARY EASEMENT T.E. = 0.007 ACRES
 T.E. PURPOSE: ENTRANCE CONSTRUCTION

RIGHT OF WAY PLANS	
ROUTE	F.A.P. 322 (US 51)
SECTION	11-1
PROJECT	
COUNTY	CHRISTIAN
JOB NO.	R-96-008-95
STA	761+00 TO STA 776+00
SCALE	1" = 50'
SHEET NO. 7 OF 24	



SET #4 REBAR
 OVER STONE
 SE CORNER
 NE 1/4
 SEC 25

SW 1/4 SEC 25, T13 N, R1 E, 3RD PM

NW 1/4 SEC 25, T13 N, R1 E, 3RD PM

483333 PM
3/29/2005