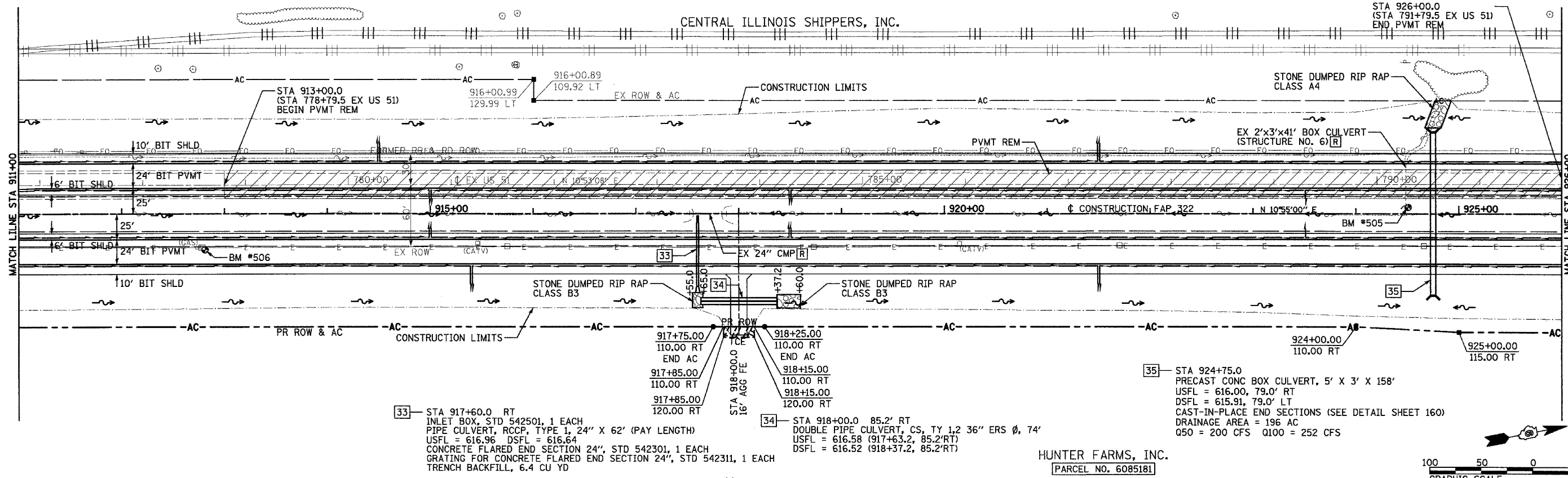
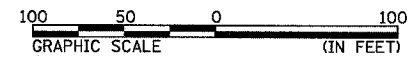


SE 1/4 SEC 12, T13N, R1E, 3RD PM

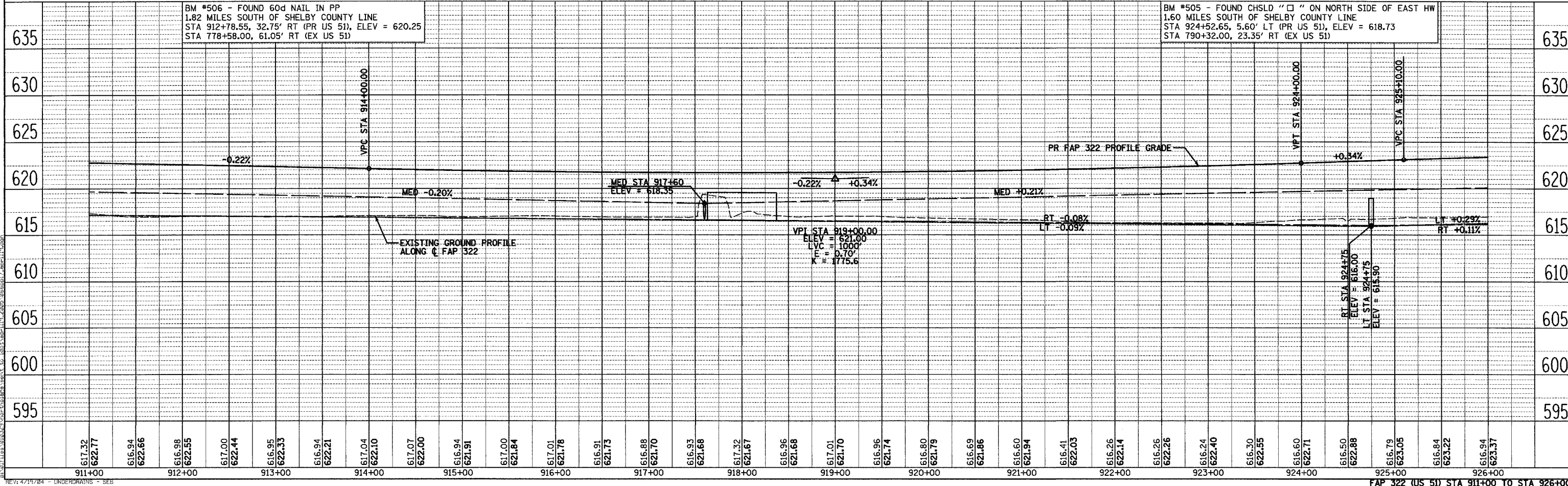
F.A.P. RTE.	SECTION	COUNTY	TOTAL SHEETS	SHEET NO.
322	11-10	CHRISTIAN	310	66
STA.		TO STA.		
FED. ROAD DIST. NO.		ILLINOIS FED. AID PROJECT		



- [33] STA 917+60.0 RT INLET BOX, STD 542501, 1 EACH PIPE CULVERT, RCCP, TYPE 1, 24" X 62" (PAY LENGTH) USFL = 616.96 DSFL = 616.64 CONCRETE FLARED END SECTION 24", STD 542301, 1 EACH GRATING FOR CONCRETE FLARED END SECTION 24", STD 542311, 1 EACH TRENCH BACKFILL, 6.4 CU YD
- [34] STA 918+00.0 85.2' RT DOUBLE PIPE CULVERT, CS, TY 1,2 36" ERS Ø, 74' USFL = 616.58 (917+63.2, 85.2'RT) DSFL = 616.52 (918+37.2, 85.2'RT)
- [35] STA 924+75.0 PRECAST CONC BOX CULVERT, 5' X 3' X 158' USFL = 616.00, 79.0' RT DSFL = 615.91, 79.0' LT CAST-IN-PLACE END SECTIONS (SEE DETAIL SHEET 160) DRAINAGE AREA = 196 AC Q100 = 252 CFS



SE 1/4 SEC 12, T13N, R1E, 3RD PM



FAP 322 (US 51) STA 911+00 TO STA 926+00

SURVEYED
 PLOTTED
 CHECKED
 NOTE BOOK
 NO.

SURVEYED
 PLOTTED
 CHECKED
 NOTE BOOK
 NO.

SURVEYED
 PLOTTED
 CHECKED
 NOTE BOOK
 NO.