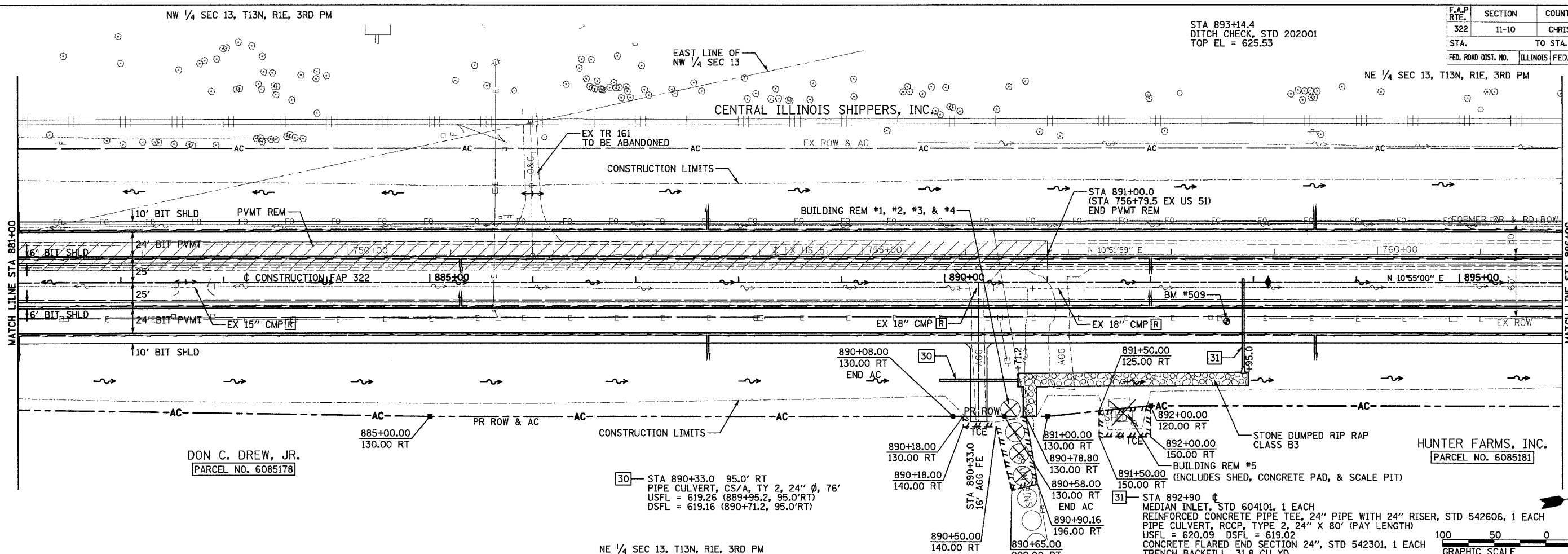


NW 1/4 SEC 13, T13N, R1E, 3RD PM

STA 893+14.4
DITCH CHECK, STD 202001
TOP EL = 625.53

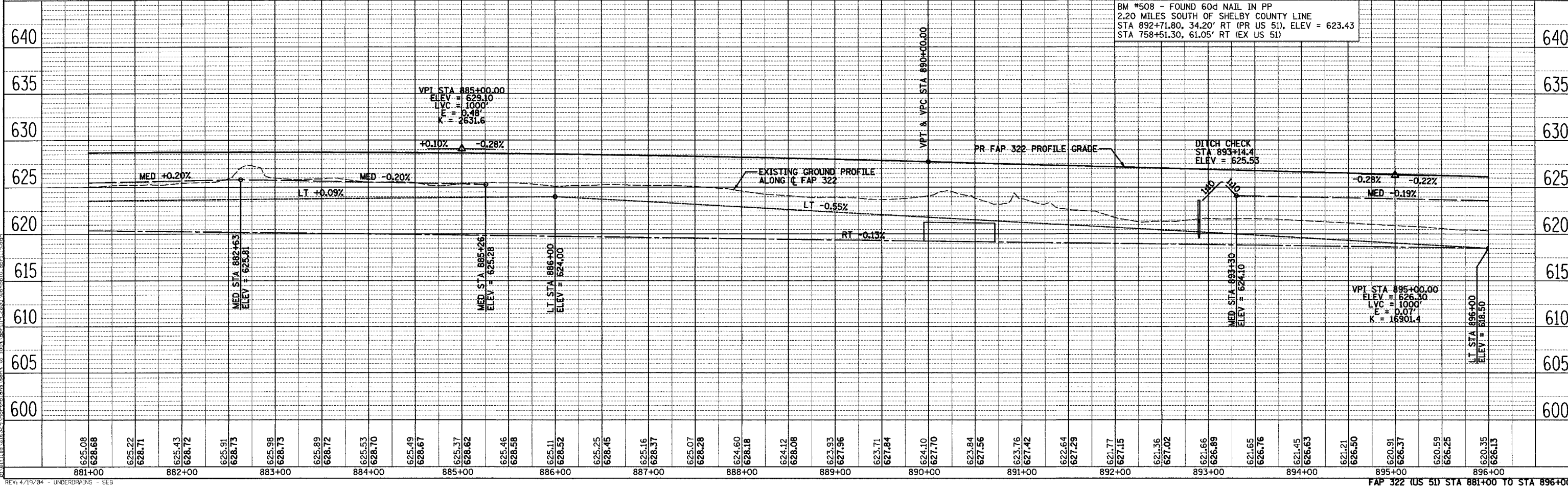
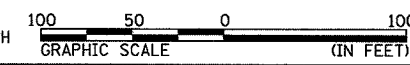
F.A.P. RTE.	SECTION	COUNTY	TOTAL SHEETS	SHEET NO.
322	11-10	CHRISTIAN	310	64
STA.		TO STA.		
FED. ROAD DIST. NO.		ILLINOIS		FED. AID PROJECT

NE 1/4 SEC 13, T13N, R1E, 3RD PM



30 - STA 890+33.0 95.0' RT
PIPE CULVERT, CS/A, TY 2, 24" Ø, 76'
USFL = 619.26 (889+95.2, 95.0' RT)
DSFL = 619.16 (890+71.2, 95.0' RT)

31 - STA 892+90
MEDIAN INLET, STD 604101, 1 EACH
REINFORCED CONCRETE PIPE TEE, 24" RISER, STD 542606, 1 EACH
PIPE CULVERT, RCCP, TYPE 2, 24" X 80' (PAY LENGTH)
USFL = 620.09 DSFL = 619.02
CONCRETE FLARED END SECTION 24", STD 542301, 1 EACH
TRENCH BACKFILL, 31.8 CU YD



FAP 322 (US 51) STA 881+00 TO STA 896+00

SURVEYED
 PLOTTED
 CHECKED
 REVISIONS
 DATE
 NO.

SURVEYED
 PLOTTED
 CHECKED
 REVISIONS
 DATE
 NO.

SURVEYED
 PLOTTED
 CHECKED
 REVISIONS
 DATE
 NO.