

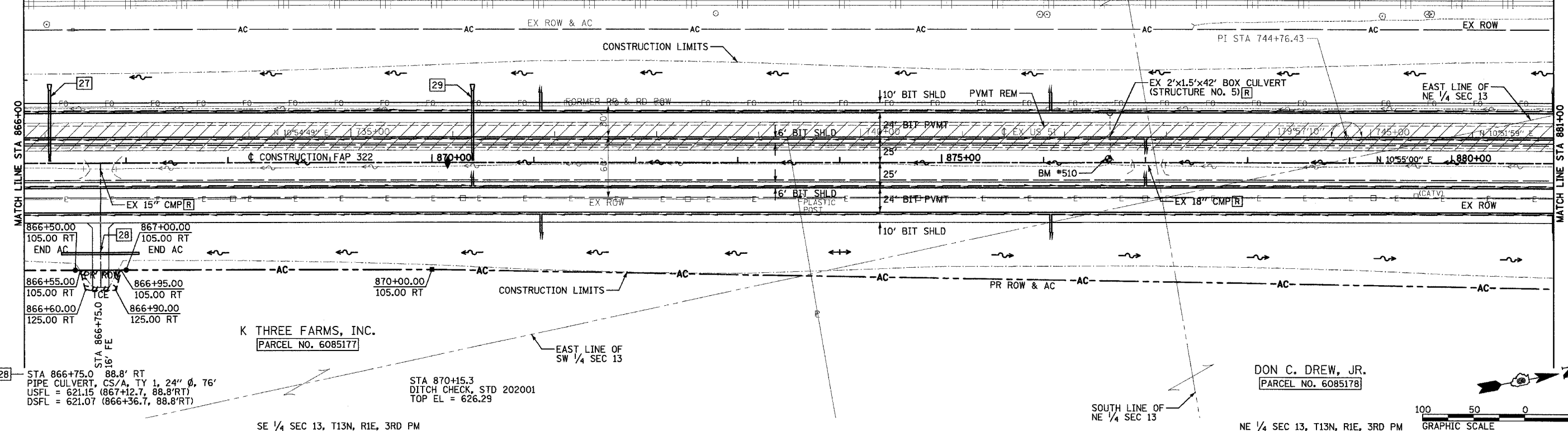
SW 1/4 SEC 13, T13N, R1E, 3RD PM

NW 1/4 SEC 13, T13N, R1E, 3RD PM

F.A.P. RTE.	SECTION	COUNTY	TOTAL SHEETS	SHEET NO.
322	11-10	CHRISTIAN	310	63
STA.		TO STA.		
FED. ROAD DIST. NO.		ILLINOIS FED. AID PROJECT		

- [27] STA 866+25 LT
INLET BOX, STD 542501, 1 EACH
PIPE CULVERT, RCCP, TYPE 1, 24" X 62' (PAY LENGTH)
USFL = 622.73 DSFL = 622.35
CONCRETE FLARED END SECTION 24", STD 542301, 1 EACH
GRATING FOR CONCRETE FLARED END SECTION 24", STD 542311, 1 EACH
TRENCH BACKFILL, 6.4 CU YD
- [28] STA 866+75.0
PIPE CULVERT, CS/A, TY 1, 24" Ø, 76'
USFL = 621.15 (867+12.7, 88.8'RT)
DSFL = 621.07 (866+36.7, 88.8'RT)
- [29] STA 870+40 LT
INLET BOX, STD 542501, 1 EACH
PIPE CULVERT, RCCP, TYPE 1, 24" X 62' (PAY LENGTH)
USFL = 622.93 DSFL = 622.69
CONCRETE FLARED END SECTION 24", STD 542301, 1 EACH
GRATING FOR CONCRETE FLARED END SECTION 24", STD 542311, 1 EACH
TRENCH BACKFILL, 6.4 CU YD
- [30] STA 870+15.3
DITCH CHECK, STD 202001
TOP EL = 626.29

CENTRAL ILLINOIS SHIPPERS, INC.

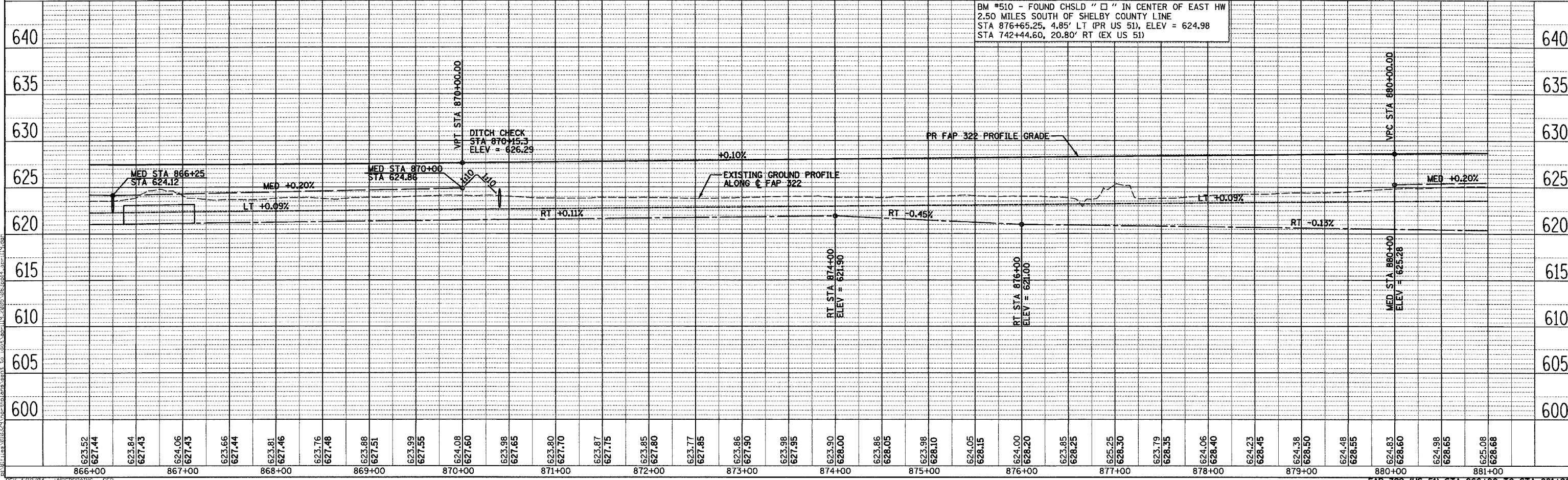
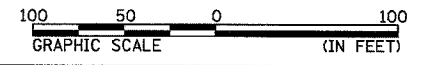


K THREE FARMS, INC.
PARCEL NO. 6085177

DON C. DREW, JR.
PARCEL NO. 6085178

SE 1/4 SEC 13, T13N, R1E, 3RD PM

NE 1/4 SEC 13, T13N, R1E, 3RD PM



BM #510 - FOUND CHSLD "□" IN CENTER OF EAST HW
2.50 MILES SOUTH OF SHELBY COUNTY LINE
STA 876+65.25, 4.85' LT (PR US 51), ELEV = 624.98
STA 742+44.60, 20.80' RT (EX US 51)

SURVEYED
 PLOTTED
 CHECKED
 DATE
 NO.
 STRUCTURE NOTATIONS CHECKED
 NO.
 DATE

SURVEYED
 PLOTTED
 CHECKED
 DATE
 NO.
 STRUCTURE NOTATIONS CHECKED
 NO.
 DATE

REV: 4/19/04 - UNDERDRAINS - SEE