

24 - STA 837+75.00
 PROPOSED PIPE CULVERT, RCCP, TYPE 2, 42" X 76' (PAY LENGTH)
 USFL = 619.39 FL = 618.77
 MEDIAN INLET, STD 604101, 1 EACH
 REINFORCED CONCRETE PIPE TEE, 42" PIPE WITH 24" RISER, STD 542606, 1 EACH
 PROPOSED PIPE CULVERT, RCCP, TYPE 2, 42" X 80' (PAY LENGTH)
 FL = 618.72 DSFL = 618.08
 CONCRETE FLARED END SECTION 42", STD 542301, 2 - EACH
 TRENCH BACKFILL, 93.8 CU YD
 DRAINAGE AREA = 39 AC
 Q50 = 82 CFS Q100 = 100 CFS

NW 1/4 SEC 24, T13N, R1E, 3RD PM

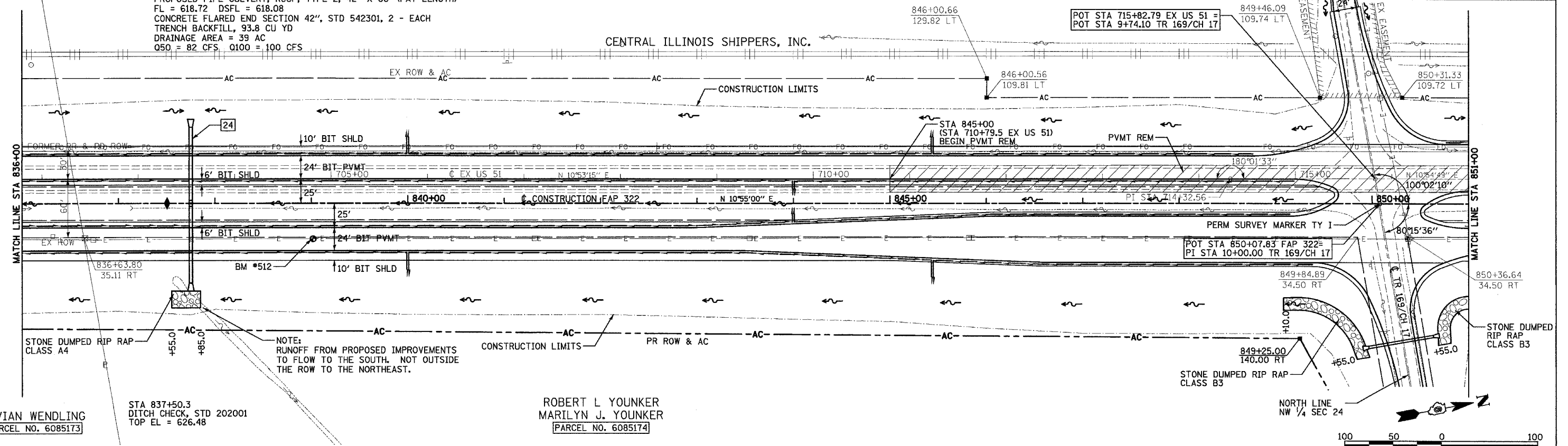
SEE SHEET 75
 FOR TR 169/CH 17 PLAN AND PROFILE

SEE SHEET 107
 FOR TR 169/CH 17 INTERSECTION GEOMETRICS

F.A.P. RTE.	SECTION	COUNTY	TOTAL SHEETS	SHEET NO.
322	11-10	CHRISTIAN	310	61

STA.	TO STA.
FED. ROAD DIST. NO.	ILLINOIS FED. AID PROJECT

CENTRAL ILLINOIS SHIPPERS, INC.



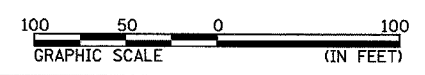
SURVEYED
 PLOTTED
 CHECKED
 NOTE BOOK
 FILE NO.

SURVEYED
 PLOTTED
 CHECKED
 NOTE BOOK
 FILE NO.

VIVIAN WENDLING
 [PARCEL NO. 6085173]

STA 837+50.3
 DITCH CHECK, STD 202001
 TOP EL = 626.48

ROBERT L. YOUNKER
 MARILYN J. YOUNKER
 [PARCEL NO. 6085174]



NW 1/4 SEC 24, T13N, R1E, 3RD PM

