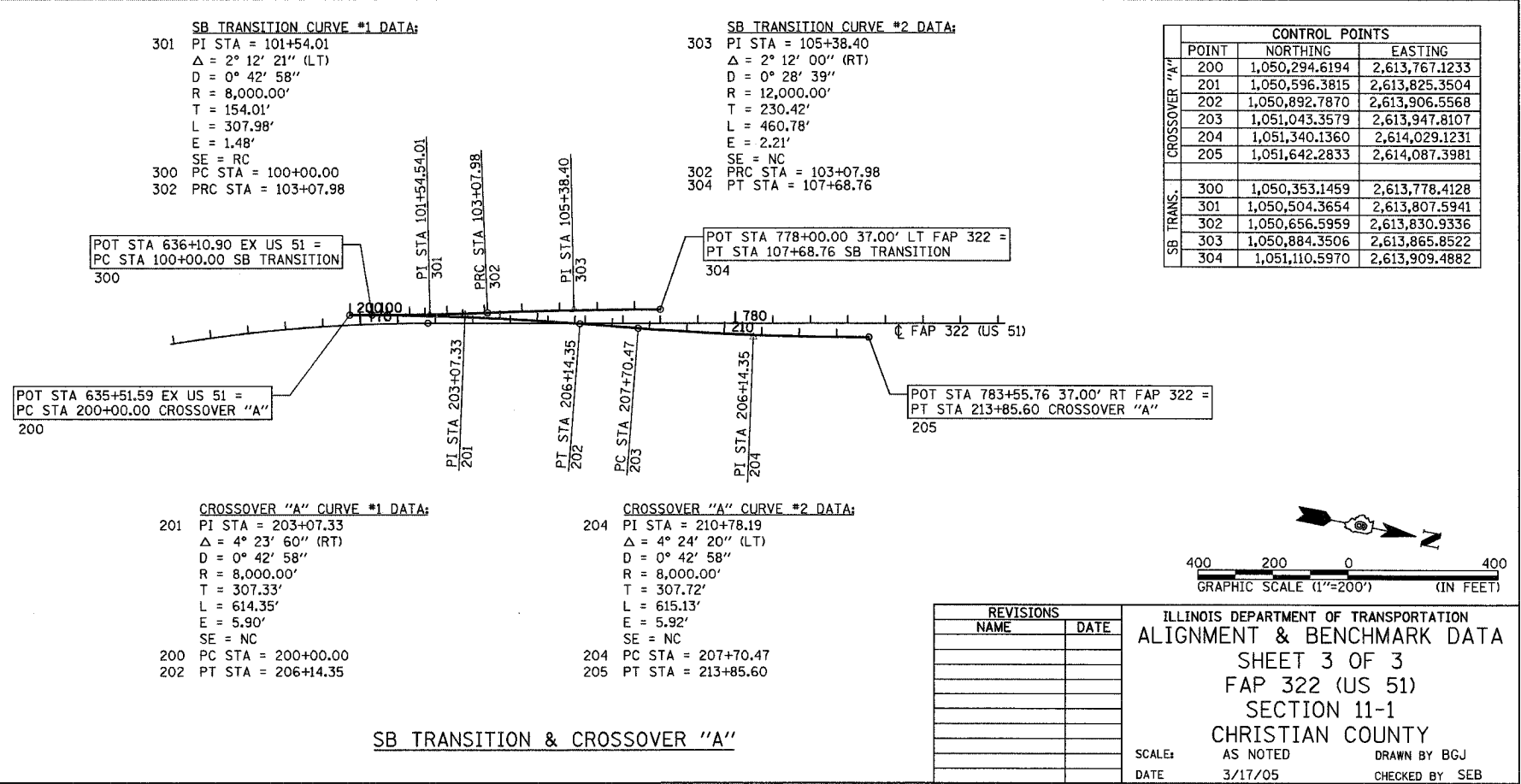
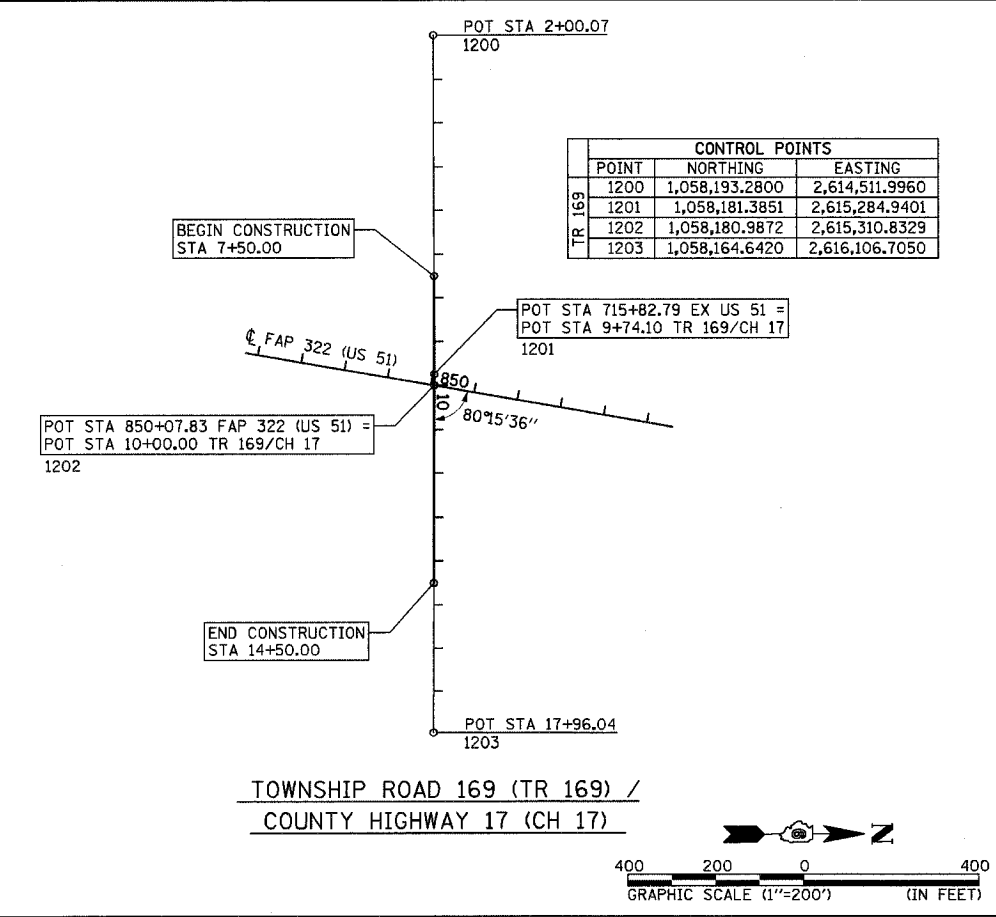
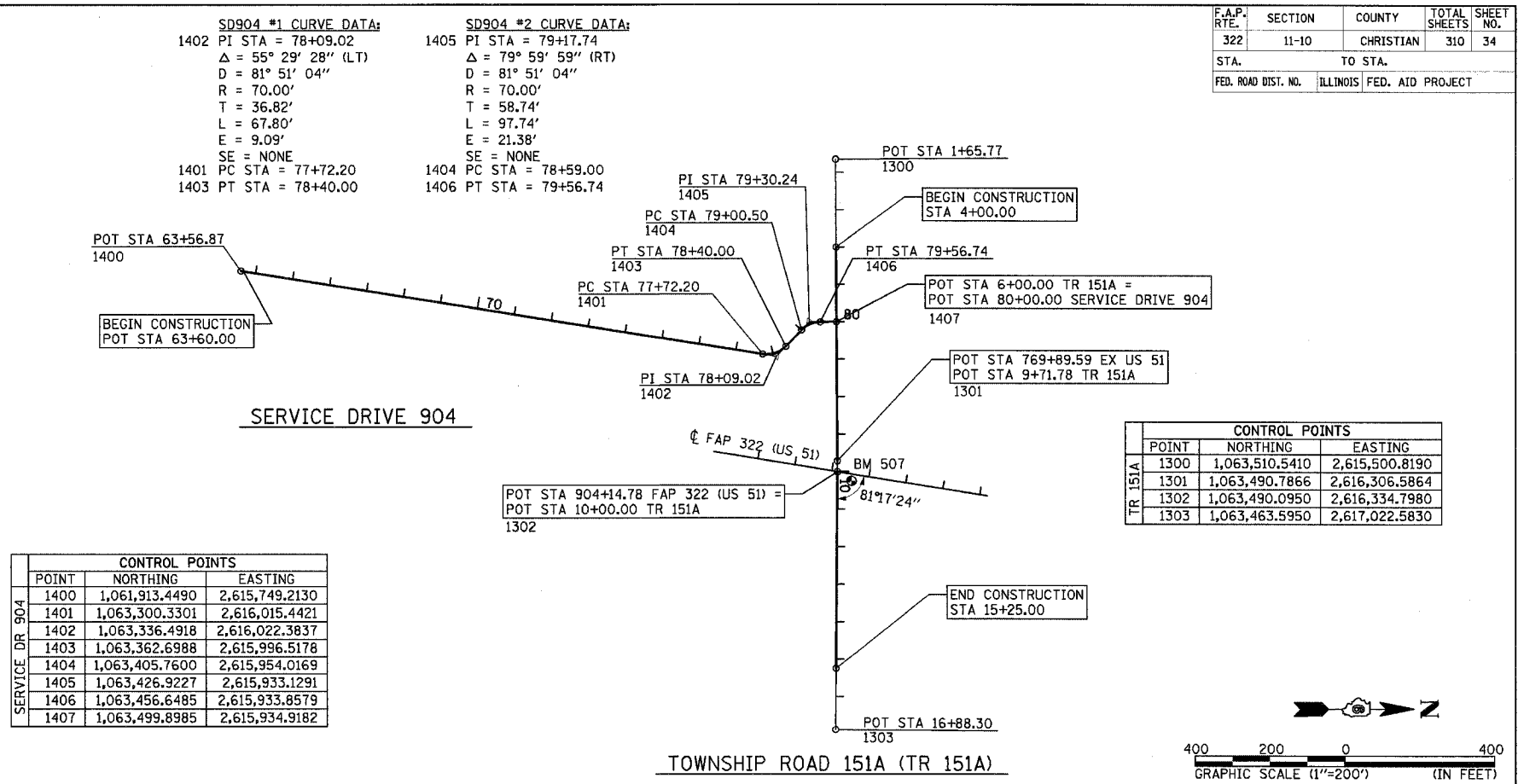
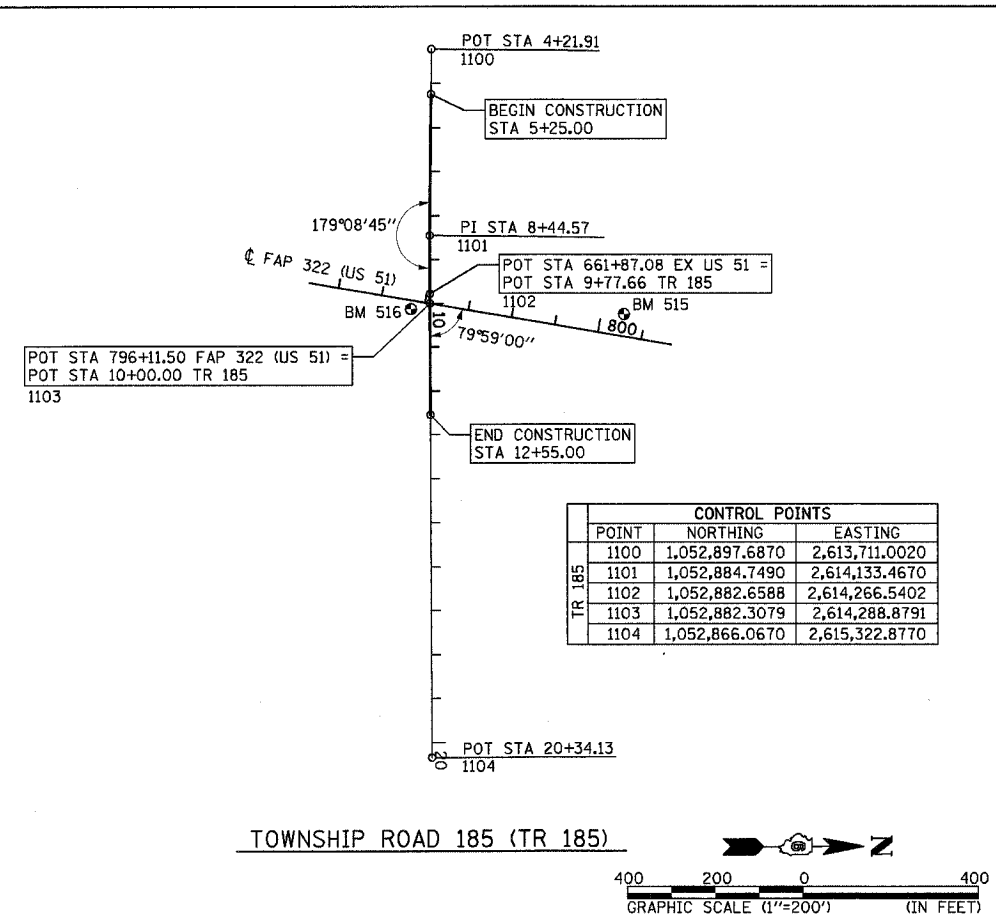


F.A.P. RTE.	SECTION	COUNTY	TOTAL SHEETS	SHEET NO.
322	11-10	CHRISTIAN	310	34
STA.		TO STA.		
FED. ROAD DIST. NO.		ILLINOIS FED. AID PROJECT		



REVISIONS	
NAME	DATE

ILLINOIS DEPARTMENT OF TRANSPORTATION  
 ALIGNMENT & BENCHMARK DATA  
 SHEET 3 OF 3  
 FAP 322 (US 51)  
 SECTION 11-1  
 CHRISTIAN COUNTY

SCALE: AS NOTED  
 DATE: 3/17/05

DRAWN BY: BGJ  
 CHECKED BY: SEB