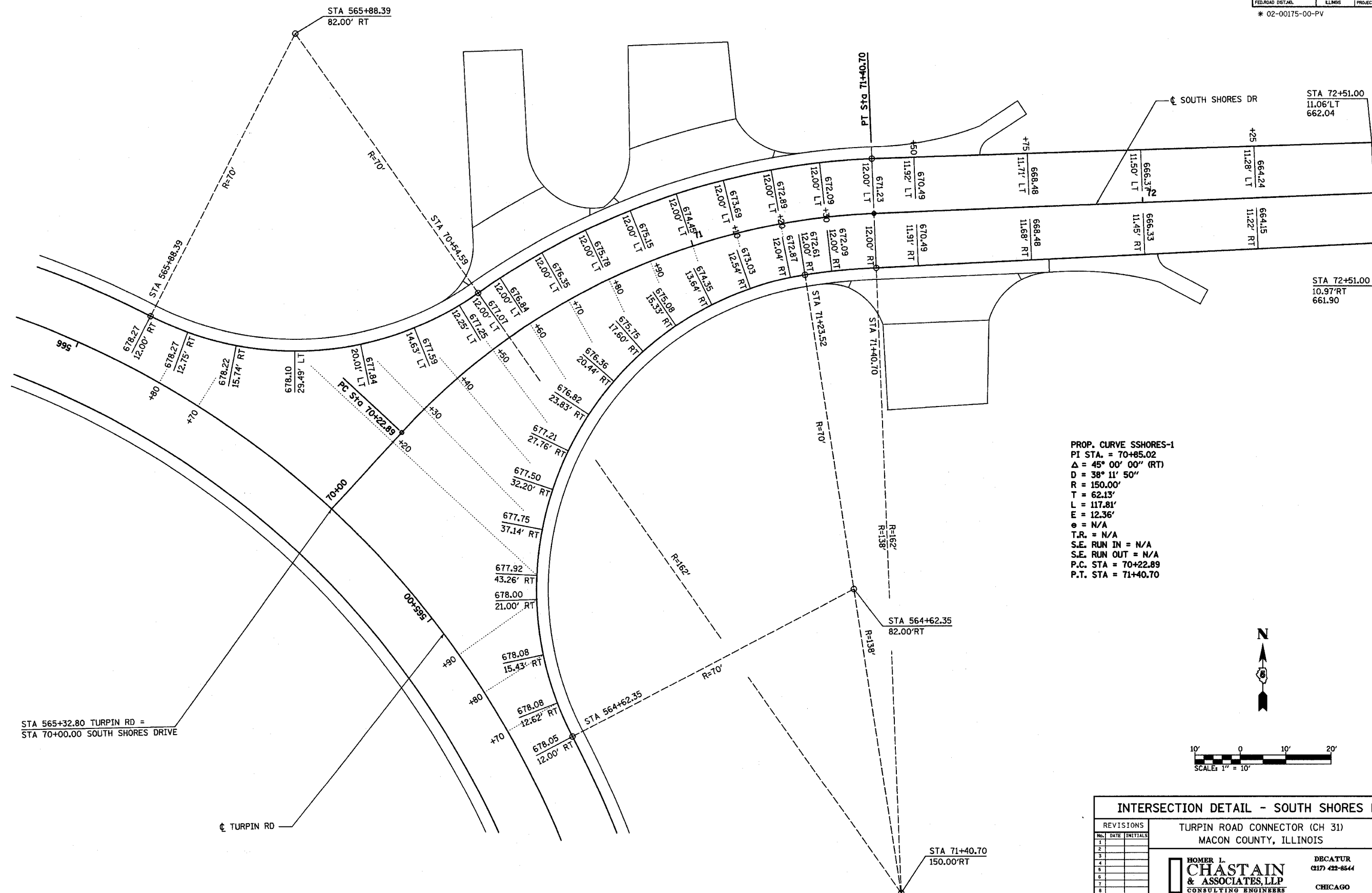
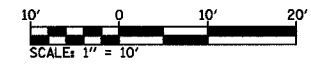


ROUTE NO.	SECTION	COUNTY	TOTAL SHEETS	SHEET NO.
CH 31	*	MACON	162	55
FED. ROAD DIST. NO.		LLMOS	PROJECT	

\* 02-00175-00-PV



PROP. CURVE SSHARES-1  
 PI STA. = 70+85.02  
 $\Delta = 45^\circ 00' 00''$  (RT)  
 $D = 38^\circ 11' 50''$   
 $R = 150.00'$   
 $T = 62.13'$   
 $L = 117.81'$   
 $E = 12.36'$   
 $\phi = N/A$   
 $T.R. = N/A$   
 $S.E. RUN IN = N/A$   
 $S.E. RUN OUT = N/A$   
 $P.C. STA = 70+22.89$   
 $P.T. STA = 71+40.70$



STA 565+32.80 TURPIN RD =  
 STA 70+00.00 SOUTH SHORES DRIVE

REVISIONS			TURPIN ROAD CONNECTOR (CH 31) MACON COUNTY, ILLINOIS		DRAWN BY	DATE
1					DLB	5/04
2					CHECKED BY	DATE
3					DLF	03/05
4					BOOK NUMBER	471
5					PROJECT No.	4805
6					SHEET No.	
7						
8						
9						
10						

HOMER L.  
**CHASTAIN**  
 & ASSOCIATES, LLP  
 CONSULTING ENGINEERS  
 CHICAGO

DECATUR  
 (317) 422-8544  
 CHICAGO  
 (773) 714-0050