

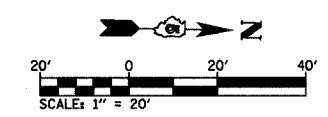
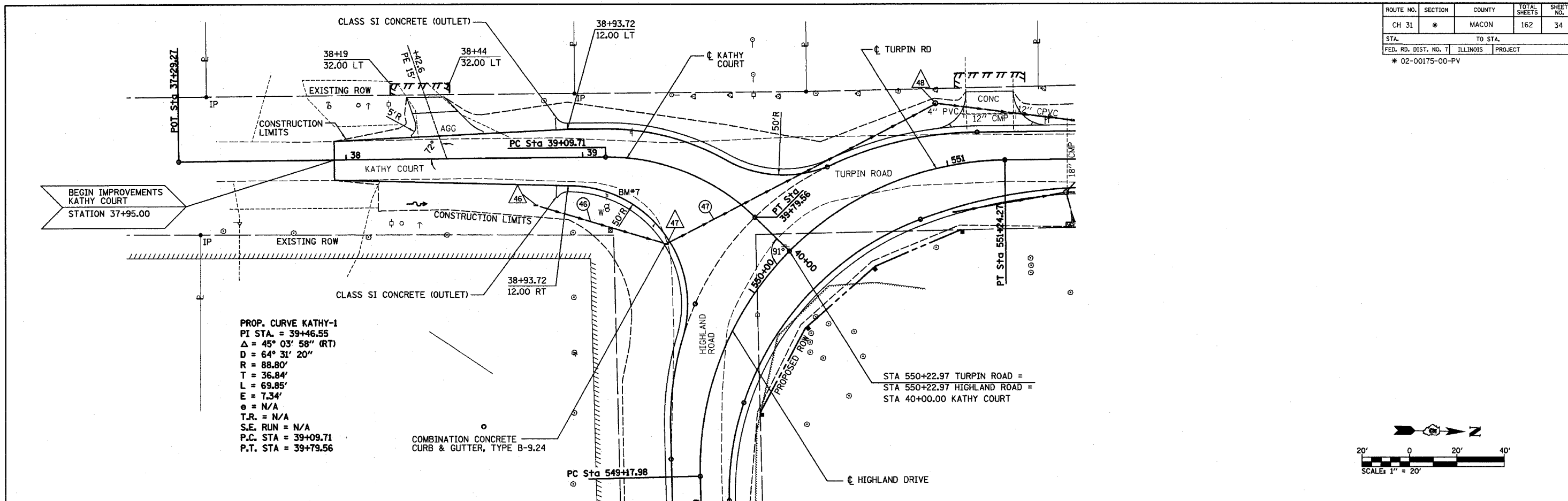
ROUTE NO.	SECTION	COUNTY	TOTAL SHEETS	SHEET NO.
CH 31	*	MACON	162	34
STA.		TO STA.		
FED. RD. DIST. NO. 7		ILLINOIS	PROJECT	
* 02-00175-00-PV				

PLAN	DATE
SURVEYED	
ALIGNED	
NOTED	
BY	
NO.	

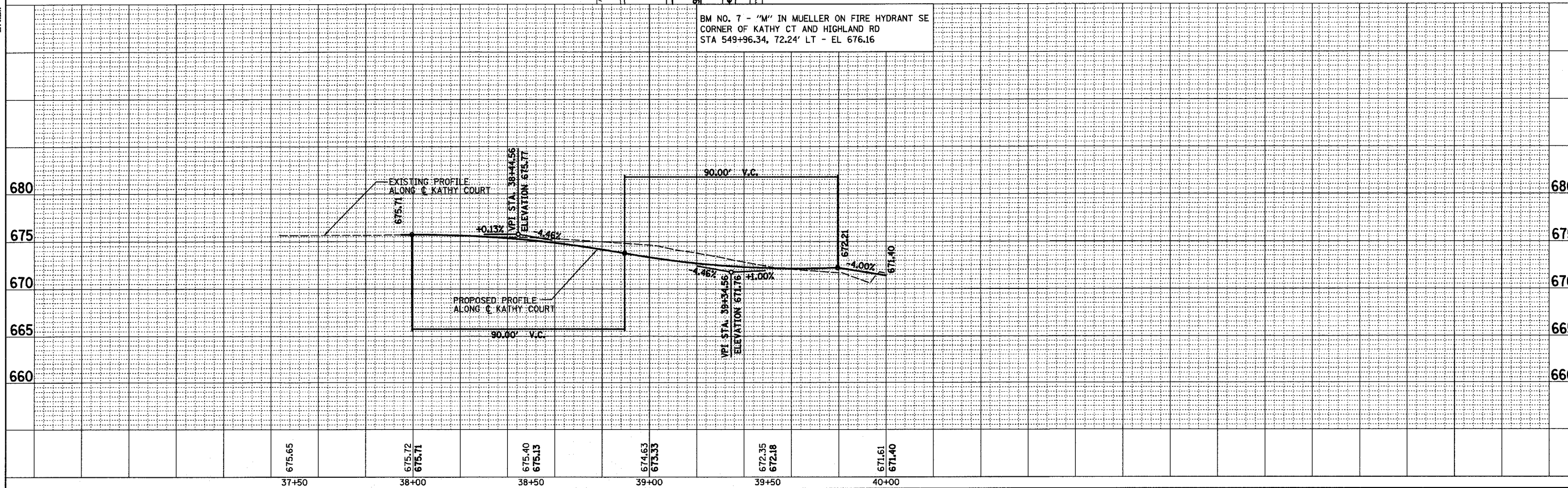
DECATUR
617-429-8444
CHICAGO
773-714-0050

ROMER L.
CHASTAIN
& ASSOCIATES, LLP
CONSULTING ENGINEERS
84-0087

PROFILE	DATE
SURVEYED	
GRADES CHECKED	
NOTED	
BY	
NO.	



BM NO. 7 - "M" IN MUELLER ON FIRE HYDRANT SE CORNER OF KATHY CT AND HIGHLAND RD
 STA 549+96.34, 72.24' LT - EL 676.16



STA 37+95 TO STA 40+00 KATHY COURT