

ROUTE NO.	SECTION	COUNTY	TOTAL SHEETS	SHEET NO.
CH 31	*	MACON	162	31
STA.		TO STA.		
FED. RD. DIST. NO. 7	ILLINOIS	PROJECT		
* 02-00175-00-PV				

DATE	BY

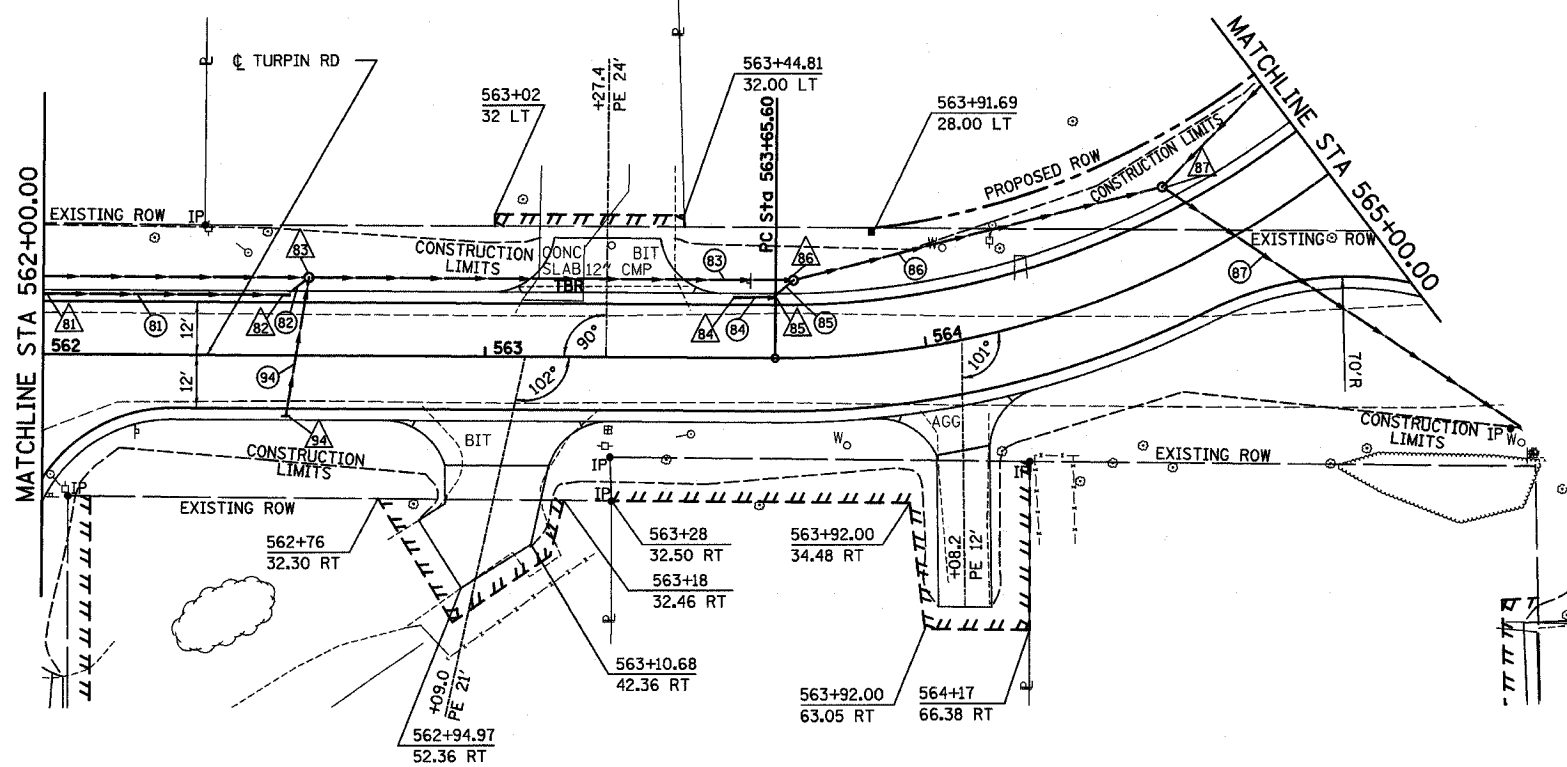
PLAN  
 SURVEYED  
 NOTEBOOK  
 ALIGNMENT CHECKED  
 RT. OF WAY CHECKED  
 NO.

DRCATUR  
 0171 425-8844  
 CHICAGO  
 0770 714-0050

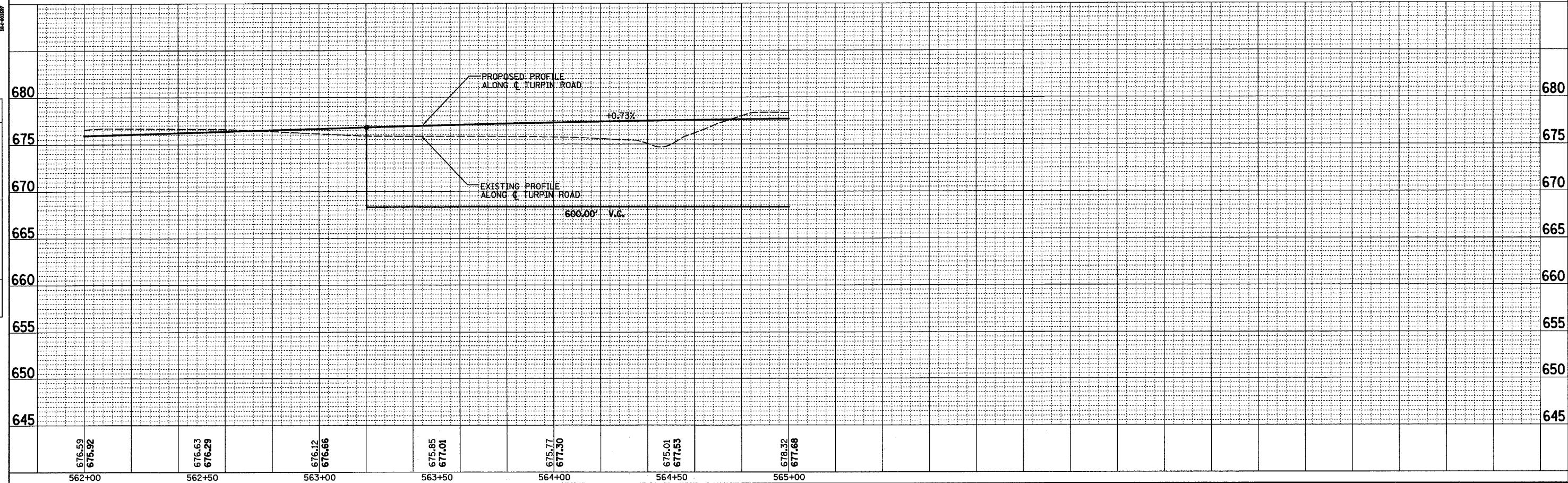
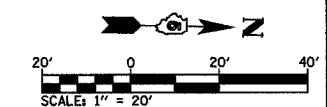
HOMER L.  
**CHASTAIN**  
 & ASSOCIATES, LLP  
 CONSULTING ENGINEERS  
 14-0007

DATE	BY

PROFILE  
 SURVEYED  
 GRADES CHECKED  
 BMS NOTED  
 STRUCTURE NOTATIONS OK'D  
 NO.



PROP. CURVE TURPIN-4  
 PI STA. = 565+77.00  
 Δ = 91° 45' 36" (LT)  
 D = 27° 56' 57"  
 R = 205.00'  
 T = 211.40'  
 L = 328.31'  
 E = 89.47'  
 e = -4.00%  
 P.C. STA = 563+65.60  
 P.T. STA = 566+93.91  
 FOR S.E. TRANSITIONS SEE  
 SUPERELEVATION TRANSITION DETAILS



STA 562+00 TO STA 565+00