

ROUTE NO.	SECTION	COUNTY	TOTAL SHEETS	SHEET NO.
CH 31	*	MACON	162	29
STA.	TO STA.			
FED. RD. DIST. NO. 7	ILLINOIS	PROJECT		

DATE	BY

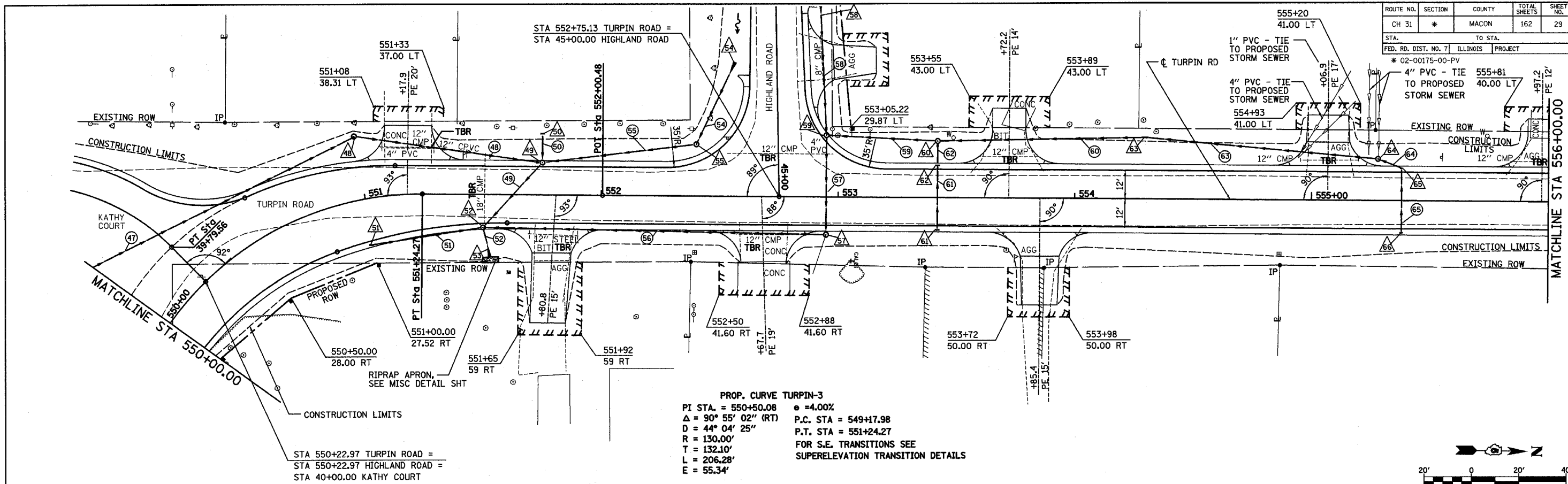
PLAN  
SURVEYED, ALIGNED, CHECKED, NOTED  
RT. OF WAY CHECKED  
NO. \_\_\_\_\_

DECATUR  
6317 429-4644  
CHICAGO  
773 714-0060

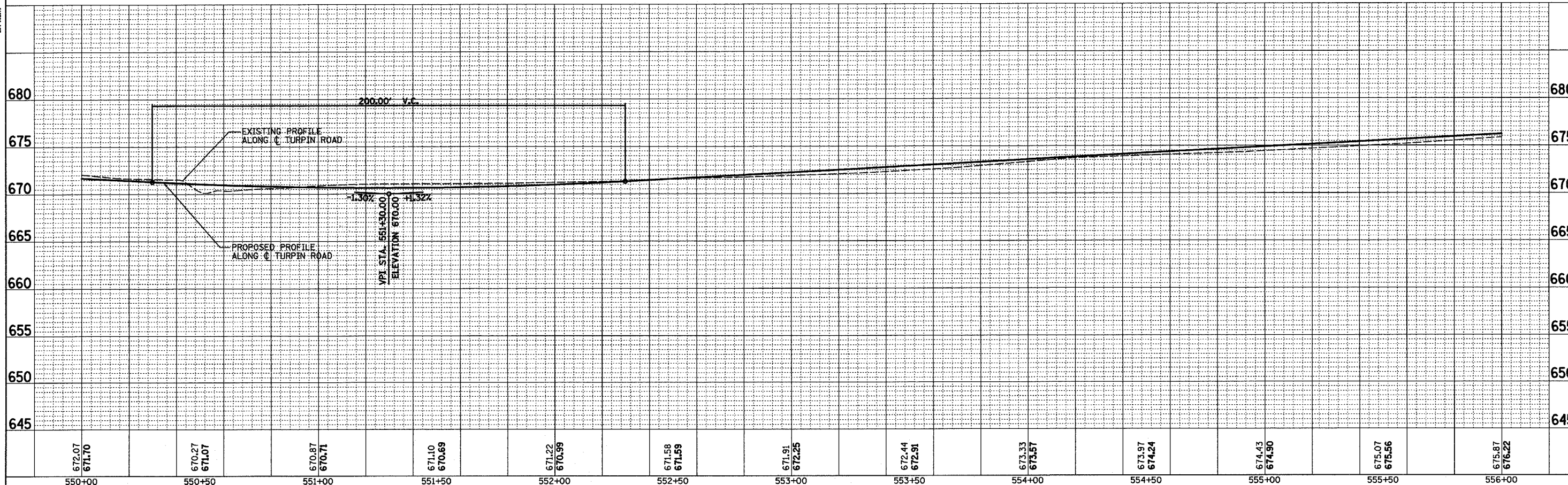
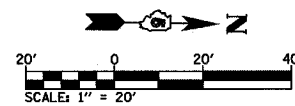
ROMER L. CHASTAIN & ASSOCIATES, L.P.  
CONSULTING ENGINEERS  
384-9887

DATE	BY

PROFILE  
SURVEYED, ALIGNED, CHECKED, NOTED  
BMS NOTED, STRUCTURE NOTATIONS OK'D  
NO. \_\_\_\_\_



PROP. CURVE TURPIN-3  
 PI STA. = 550+50.08    e = 4.00%  
 Δ = 90° 55' 02" (RT)    P.C. STA = 549+17.98  
 D = 44° 04' 25"        P.T. STA = 551+24.27  
 R = 130.00'            FOR S.E. TRANSITIONS SEE  
 T = 132.10'            SUPERELEVATION TRANSITION DETAILS  
 L = 206.28'  
 E = 55.34'



STA 550+00 TO STA 556+00