

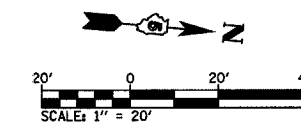
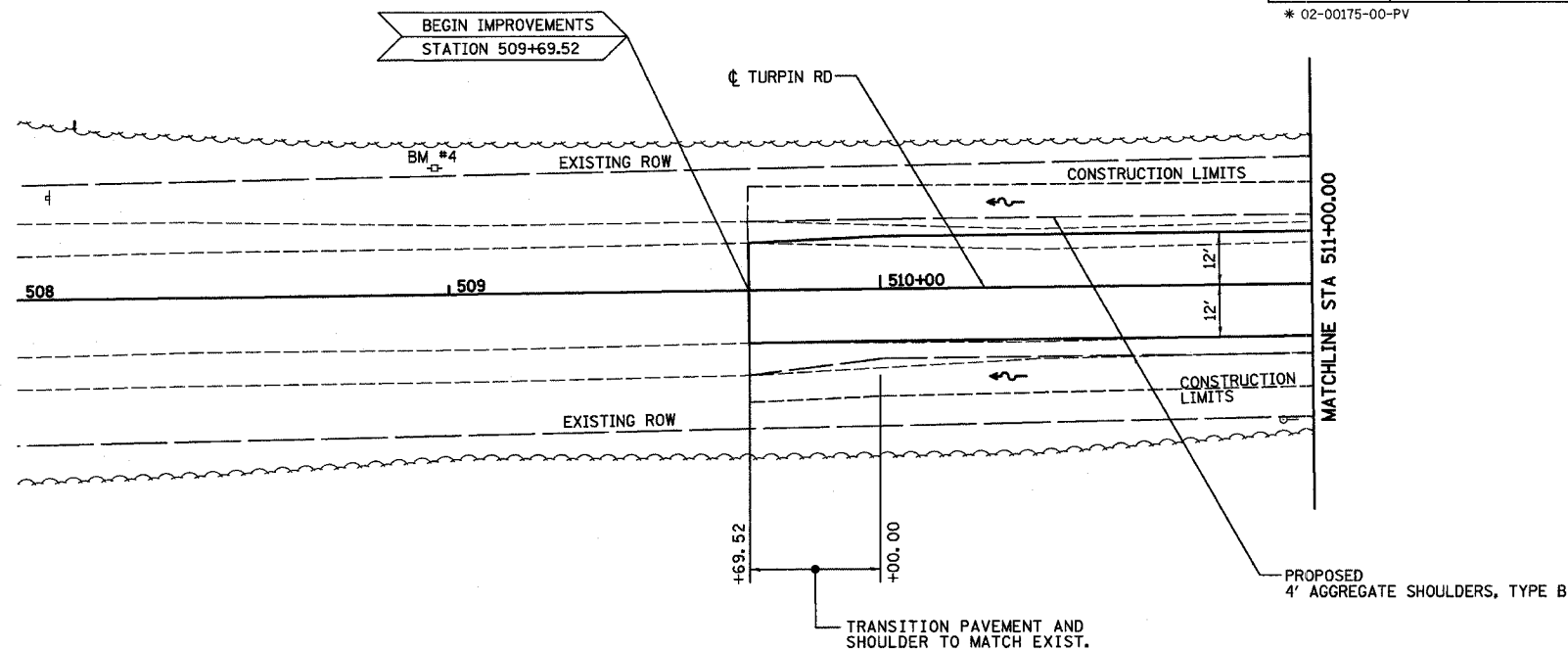
ROUTE NO.	SECTION	COUNTY	TOTAL SHEETS	SHEET NO.
CH 31	*	MACON	162	20
STA.		TO STA.		
FED. RD. DIST. NO. 7		ILLINOIS		PROJECT
* 02-00175-00-PV				

EXISTING TOPO LEGEND

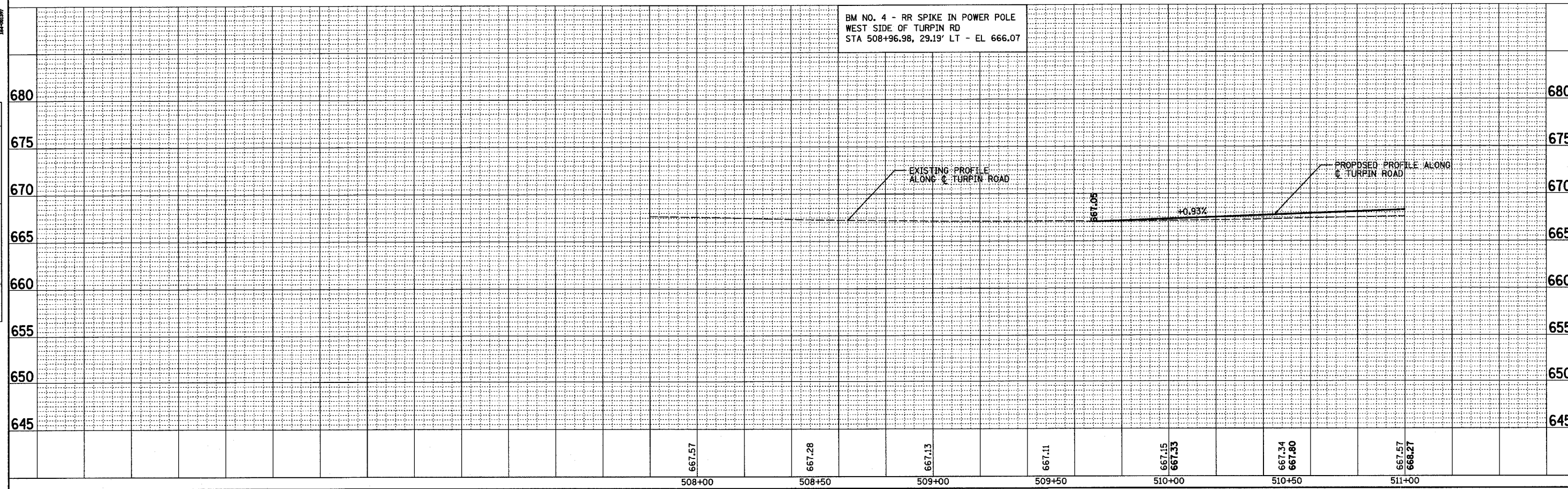
- ⊙ MANHOLE
- GAS METER
- ⌘ MAILBOX
- ⊙ WATER METER
- ⊞ TELEPHONE BOX
- ⊕ FIRE HYDRANT
- ⊙ LIGHT POLE
- ⊙ GUY ANCHOR
- ⊕ POWER POLE
- ⊙ SIGN
- ⊙ TREE
- IRON PIN OR PROPERTY PIN
- ↔ SAME OWNERSHIP
- P — PROPERTY LINE
- X - X - X - FENCE
- W — WATER MAIN
- G — GAS
- T — TELEPHONE
- ~ ~ ~ CULTIVATION LINE
- — — EXISTING ROW
- /// /// /// UTILITY EASEMENT
- - - SECTION LINE
- ~ ~ ~ FLOW DIRECTION

PROPOSED LEGEND

- FLOW DIRECTION
- ◄ END SECTION
- CULVERT
- INLET
- ⊙ MANHOLE
- ↔ SUMMIT
- PIPE UNDERDRAIN
- STORM SEWER
- △ STRUCTURE NUMBER
- ⓪ STORM SEWER NUMBER
- TBR TO BE REMOVED
- - - PROPOSED ROW
- /// /// /// TEMPORARY EASEMENT



BM NO. 4 - RR SPIKE IN POWER POLE
WEST SIDE OF TURPIN RD
STA 508+96.98, 29.19' LT - EL 666.07



STA 508+00 TO STA 511+00

PLAN

DATE	BY
DATE	BY
DATE	BY

CHICAGO 7730 714-0660

DECATUR 0317 422-8444

HOMER L. CHASTAIN & ASSOCIATES, LLP

PROFILE

DATE	BY
DATE	BY
DATE	BY