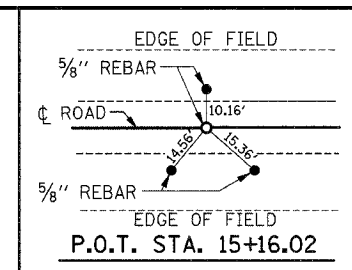
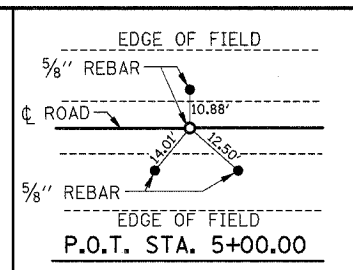


F.A. RTE.	SECTION	COUNTY	TOTAL SHEETS	SHEET NO.
99-05117-00-BR		SHELBY	15	5
STA. 6+00		TO STA. 15+00		
FED. ROAD DIST. NO.		ILLINOIS FED. AID PROJECT		



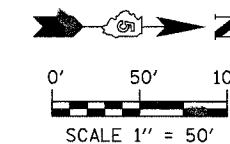
WEST 1/2, S.E. 1/4, SEC. 7, T. 9 N., R. 3 E., 3rd P.M.

WALTER A. & BARBARA A. BOEHM  
PARCEL 001

STA. 9+94.00 - SPECIAL BRIDGE DESIGN

THREE SPAN PRECAST PRESTRESSED CONCRETE DECK BEAM BRIDGE (21" DEPTH), 145'-0" BACK TO BACK OF ABUTMENTS, 24'-0" CLEAR WIDTH ON PILE BENT ABUTMENTS AND PIERS. SKEW = 15° RT. FWD.

RIPRAP DITCH  
STA. 14+00 LT TO  
STA. 15+00 LT  
(60 TON)



- LEGEND**
- ⊕ INLET AND PIPE PROTECTION
  - ⊕ TEMPORARY DITCH CHECK
  - PERIMETER EROSION BARRIER

TEMPORARY DITCH CHECK LOCATION

STA.	OFFSET
6+00	LT RT
9+50	LT RT
10+25	LT RT
13+75	LT RT

PROJECT BEGINS  
STA. 6+00.00

**INLET PIPE PROTECTION**  
STA 7+25 RT  
STA 8+50 LT  
STA 11+25 RT

TRANSITION FROM EXISTING ROADWAY SECTION AT STA. 6+00 TO PROPOSED ROADWAY SECTION AT STA. 6+65

GERALD & LOUIS DUNAWAY  
PARCEL 002

PERIMETER EROSION BARRIER  
STA 6+40 RT TO STA 6+90 RT  
STA 8+15 RT TO STA 8+30 RT

MERLYN C. & L. JEAN RICHARDS  
PARCEL 003

EAST 1/2, S.E. 1/4, SEC. 7, T. 9 N., R. 3 E., 3rd P.M.

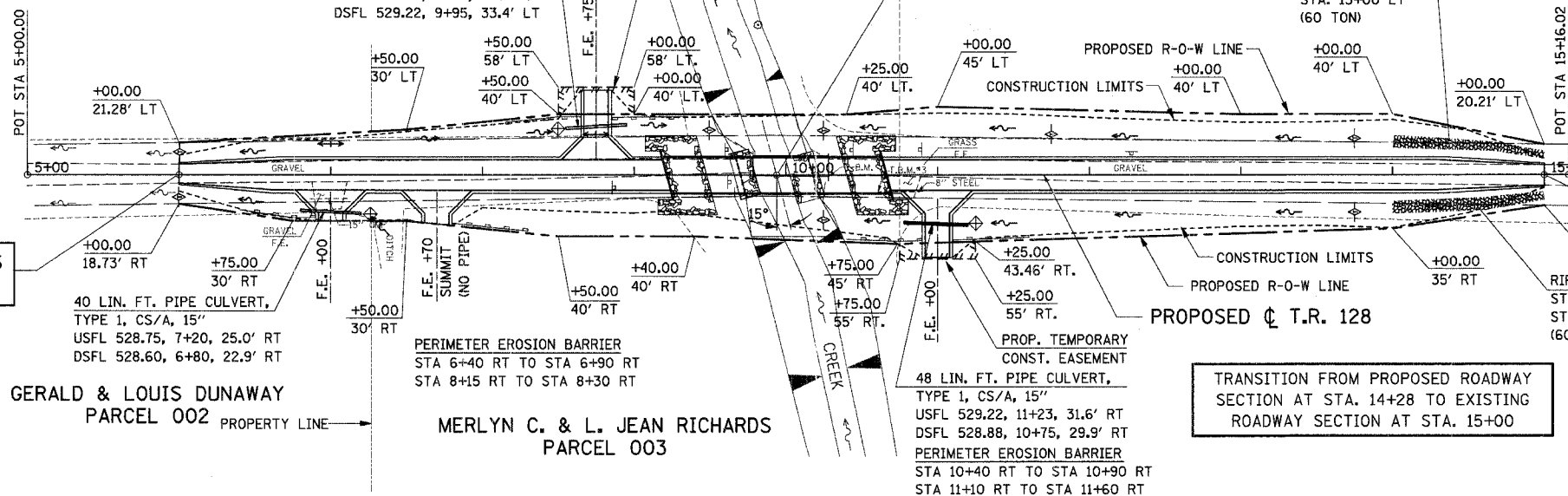
B.M. - CHISELED "X" ON TOP OF EAST GIRDER ON NORTH END OF BRIDGE.  
ELEV. 534.78

T.B.M. #3 - CHISELED "X" ON TOP OF SOUTH END OF 8" STEEL CULVERT,  
11' RT. STA. 10+60. ELEV. 530.45

TRANSITION FROM PROPOSED ROADWAY SECTION AT STA. 14+28 TO EXISTING ROADWAY SECTION AT STA. 15+00

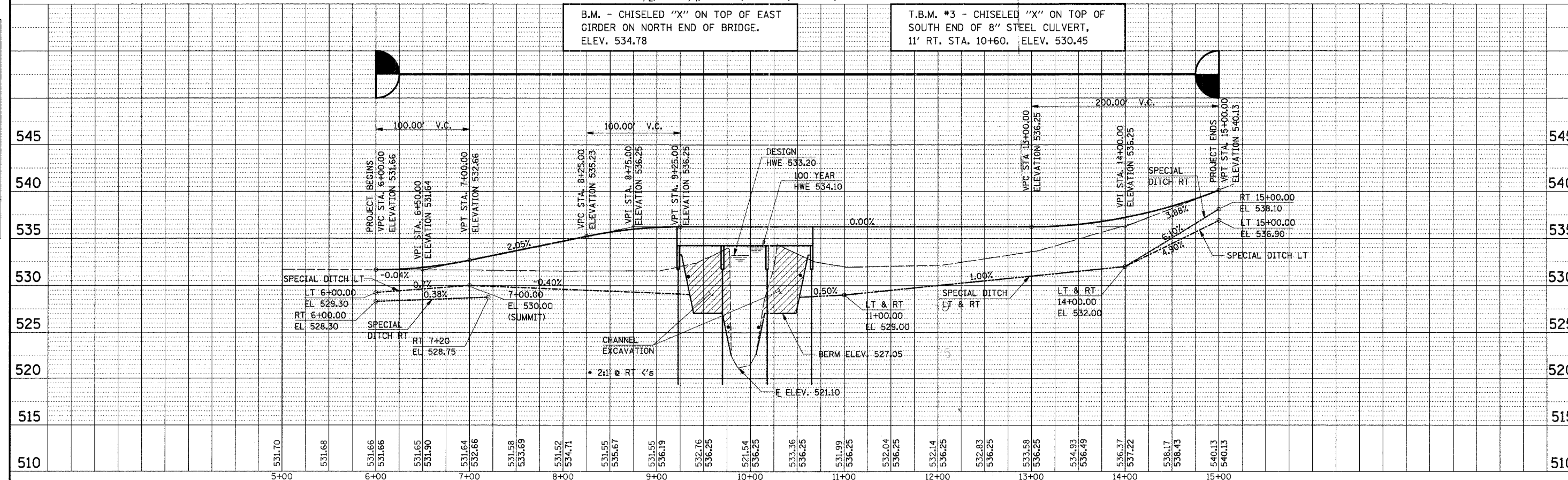
**CHANNEL EXCAVATION**

THE CHANNEL SHALL BE EXCAVATED WITH 2:1 SIDE SLOPES AT RIGHT ANGLES TO THE CHANNEL WITHIN THE LIMITS OF THE PROPOSED STRUCTURE AND TRANSITIONED TO MEET THE EXISTING CHANNEL AT THE "R-O-W" LIMITS. ESTIMATED QUANTITY = 1,010 CU. YDS. SUITABLE EXCAVATION MATERIAL MAY BE USED FOR EMBANKMENT AS DIRECTED BY THE ENGINEER. ESTIMATED QUANTITY AVAILABLE FOR EMBANKMENT = 505 CU. YDS.



DATE: \_\_\_\_\_  
BY: \_\_\_\_\_  
REVISIONS:  
NO. DATE DESCRIPTION

DATE: \_\_\_\_\_  
BY: \_\_\_\_\_  
REVISIONS:  
NO. DATE DESCRIPTION



PLAN AND PROFILE T.R. 128 - STA. 5+00 TO STA. 15+00