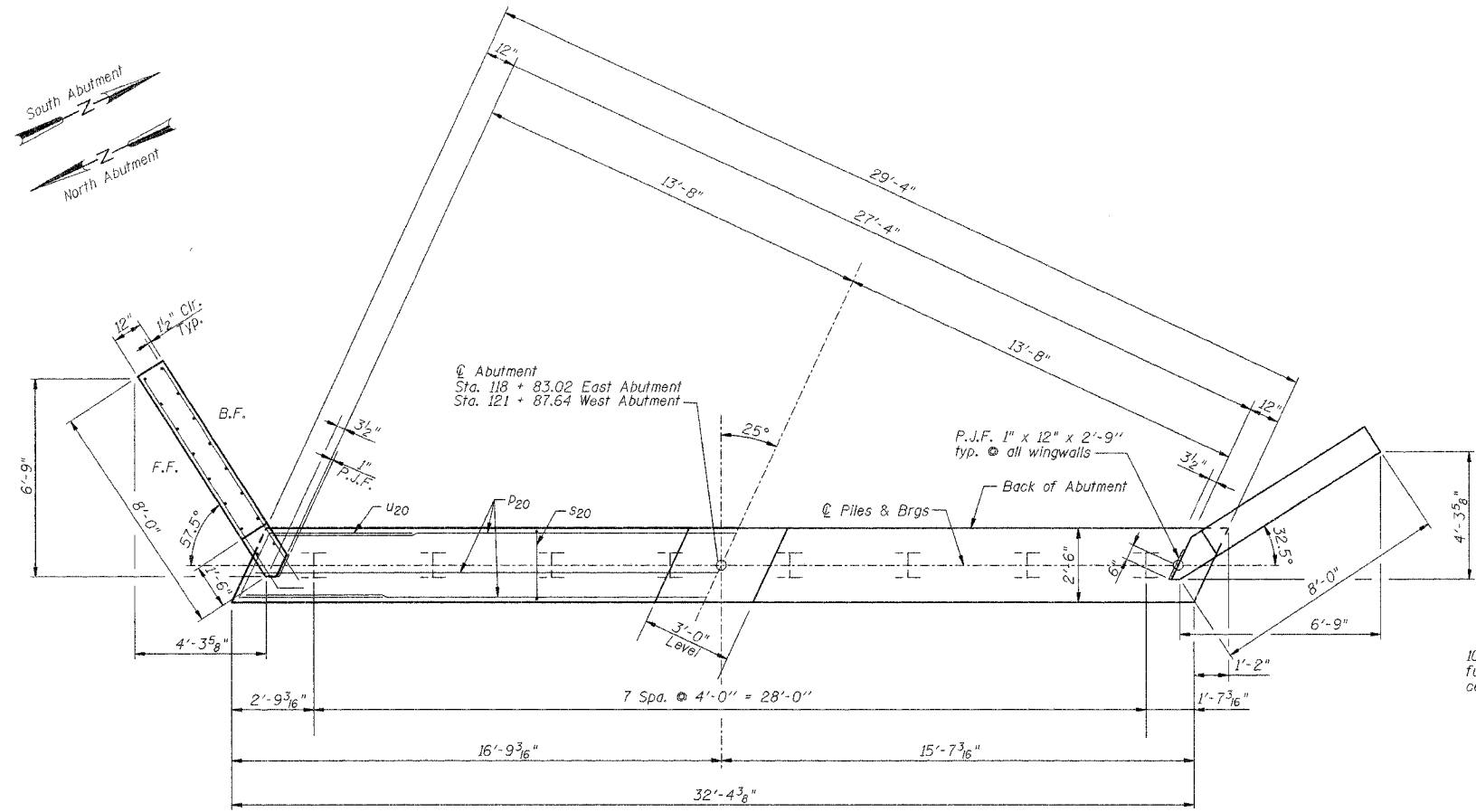


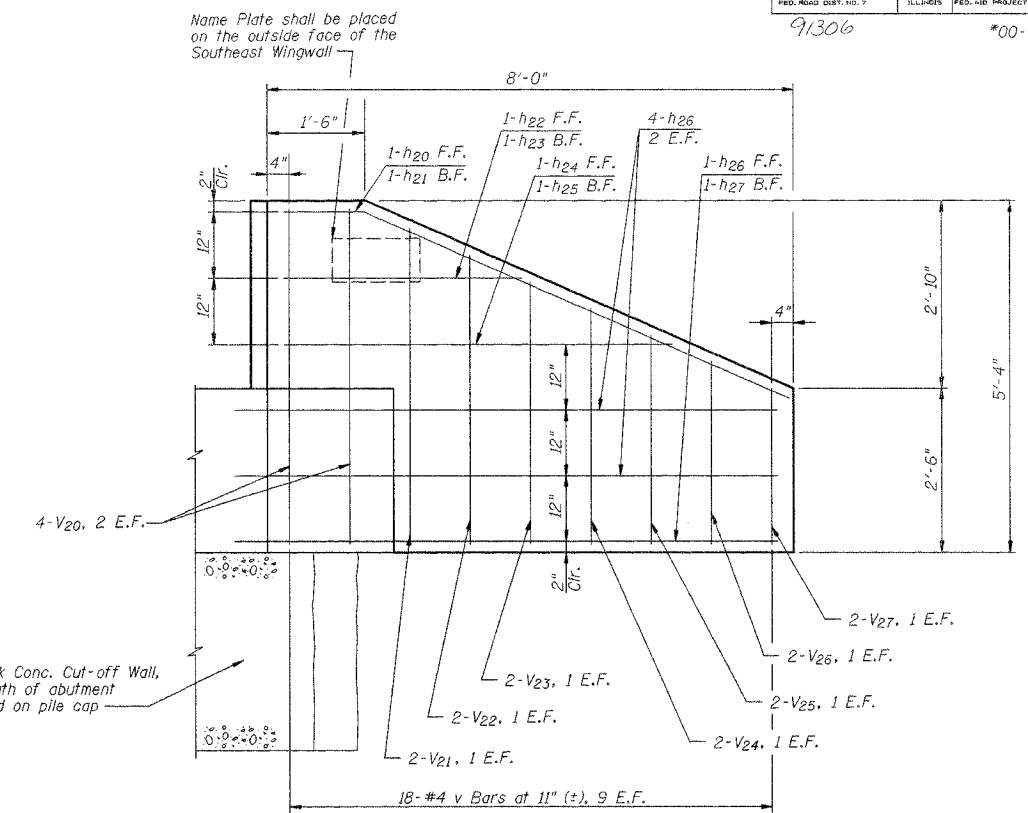
ROUTE NO.	SECTION	COUNTY	TOTAL SHEETS	SHEET NO.
TR 38	*	Vermilion	18	7
FED. ROAD DIST. NO. 7		ILLINOIS FED. AID PROJECT		

91306 *00-19134-00-BR



TOP PLAN

NOTE: All edges shall have Standard 3/4" Chamfer, except as noted.



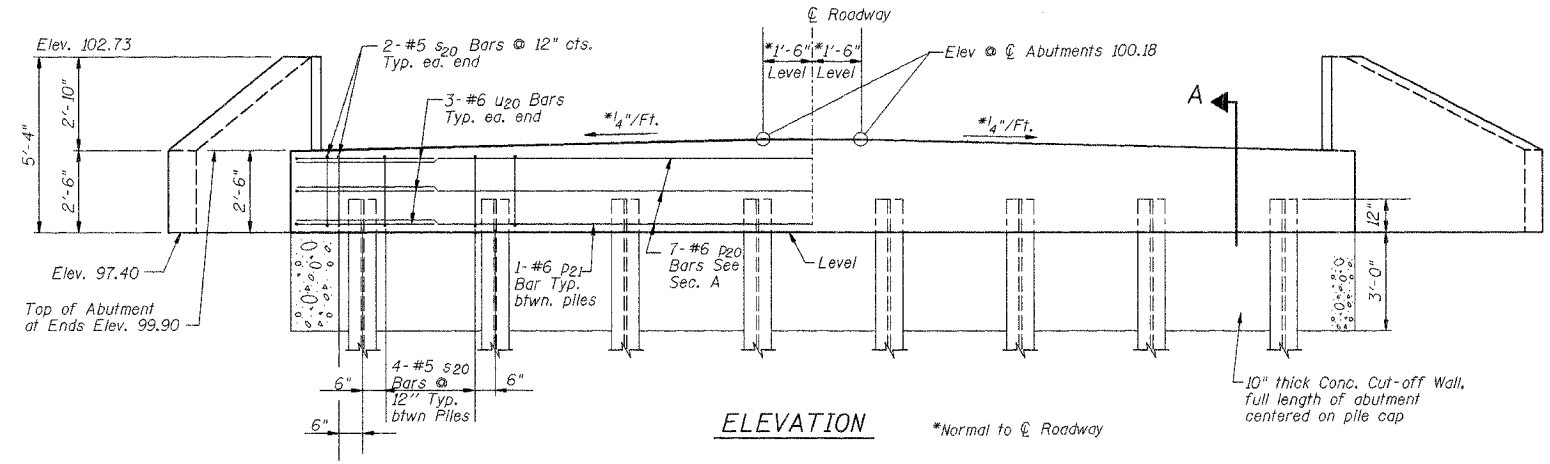
WINGWALL ELEVATION

Wingwalls shall be poured after beams are in place.

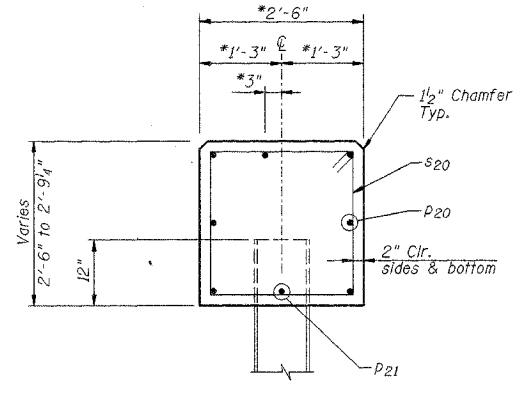
BILL OF MATERIAL-2 ABUTS.

Bar	No.	Size	Length	Shape
h20	4	#5	8'-3"	
h21	4	#5	7'-9"	
h22	4	#5	3'-7"	
h23	4	#5	3'-1"	
h24	4	#5	5'-11"	
h25	4	#5	5'-5"	
h26	20	#5	9'-6"	
h27	4	#5	8'-4"	
p20	14	#6	32'-0"	
p21	14	#6	3'-6"	
s20	64	#5	9'-7"	
u20	12	#6	12'-3"	
v20	16	#4	5'-0"	
v21	8	#4	4'-9"	
v22	8	#4	4'-4"	
v23	8	#4	3'-11"	
v24	8	#4	3'-6"	
v25	8	#4	3'-2"	
v26	8	#4	2'-9"	
v27	8	#4	2'-4"	

Concrete Structures	Cu. Yds.	20.3
Reinforcement Bars	Lbs.	2170
Test Pile, Steel HP10x42	Each	2
Furnishing Steel Piles, HP10x42	Foot	266
Driving Steel Piles	Foot	266
Metal Shoes	Each	14
Name Plate	Each	1
Concrete Cut-off Wall	Cu. Yds.	6.0
Structure Excavation	Cu. Yds.	9

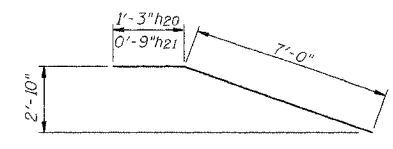


ELEVATION

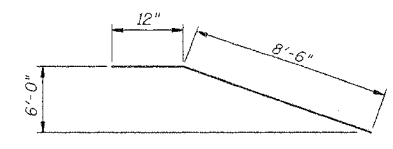


SECTION A

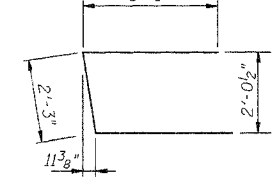
*Normal to @ Abutment



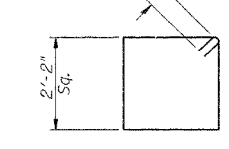
BAR h20, h21



BAR h26



BAR u20



BAR s20

PILE DATA

Type: Steel HP 10 x 42
 No. Required: 7 East Abutment
 7 West Abutment
 Capacity: 30 T/Pile @ East Abutment
 30 T/Pile @ West Abutment
 Est. Length: 19 Ft. E. Abutment
 19 Ft. W. Abutment
 Test Piles: 1 East Abutment
 1 West Abutment

NO.	DATE	REVISION	BY	APVD
DSGN	J.R. Wolf			
DR	J.R. Wolf			
CHK	K.E. Brandau			
APVD	K.E. Brandau			

FRAUENHÖFFER
 Fraunhofer and Associates, P.C. Consulting Engineers
 3002 Crossing Court Champaign, IL 61822 217-351-6268

ABUTMENTS		SHEET 7
VANCE ROAD DISTRICT SECTION 00-19134-00-BR VERMILION COUNTY		DWG NO. van-abt.dgn DATE AUG 2004 PROJ NO. 2088