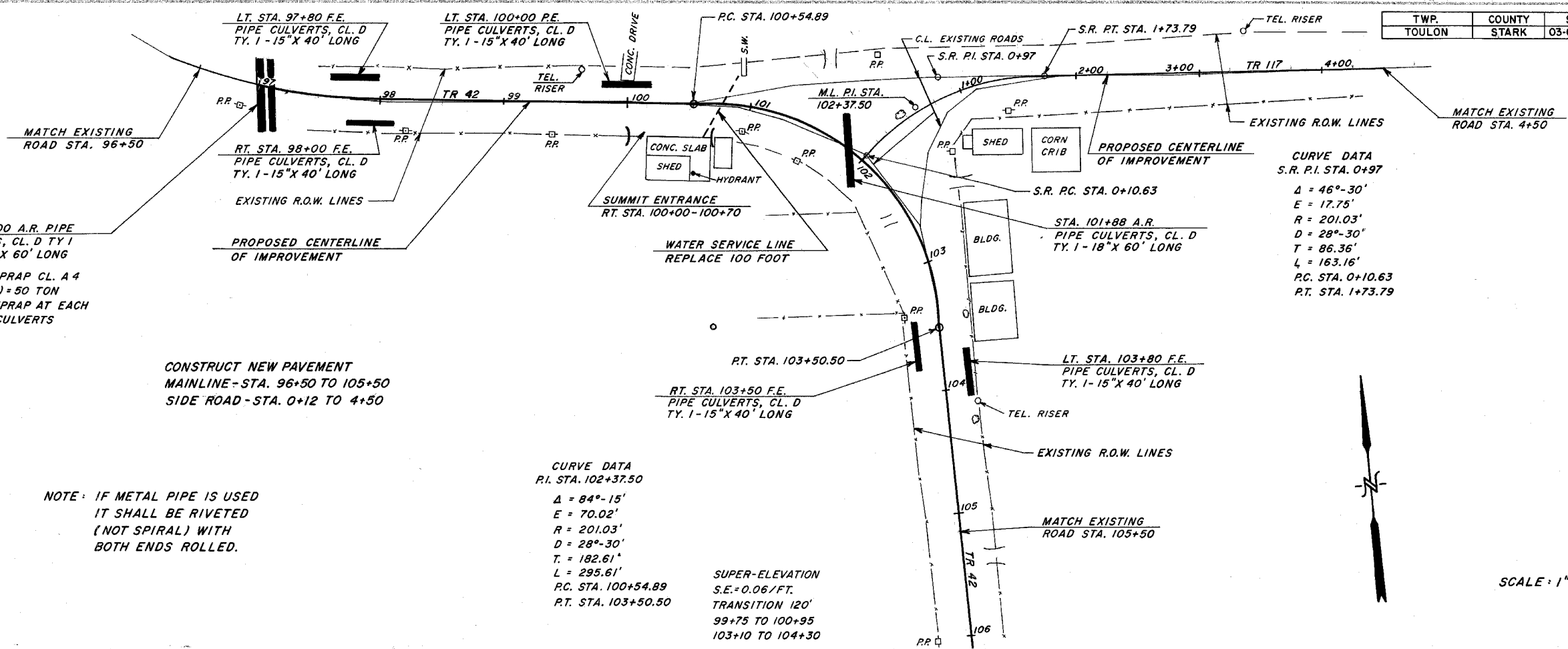


TWP.	COUNTY	SECTION	TWP HWY NO.	SHEET NO.	TOTAL SHEETS
TOULON	STARK	03-06114-00-SP	46	4	8

CONTRACT# 89305



CURVE DATA
S.R. P.I. STA. 0+97
 $\Delta = 46^{\circ}-30'$
 $E = 17.75'$
 $R = 201.03'$
 $D = 28^{\circ}-30'$
 $T = 86.36'$
 $L = 163.16'$
 P.C. STA. 0+10.63
 P.T. STA. 1+73.79

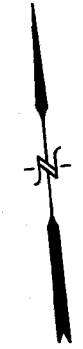
CURVE DATA
P.I. STA. 102+37.50
 $\Delta = 84^{\circ}-15'$
 $E = 70.02'$
 $R = 201.03'$
 $D = 28^{\circ}-30'$
 $T = 182.61'$
 $L = 295.61'$
 P.C. STA. 100+54.89
 P.T. STA. 103+50.50

SUPER-ELEVATION
S.E. = 0.06/FT.
TRANSITION 120'
99+75 TO 100+95
103+10 TO 104+30

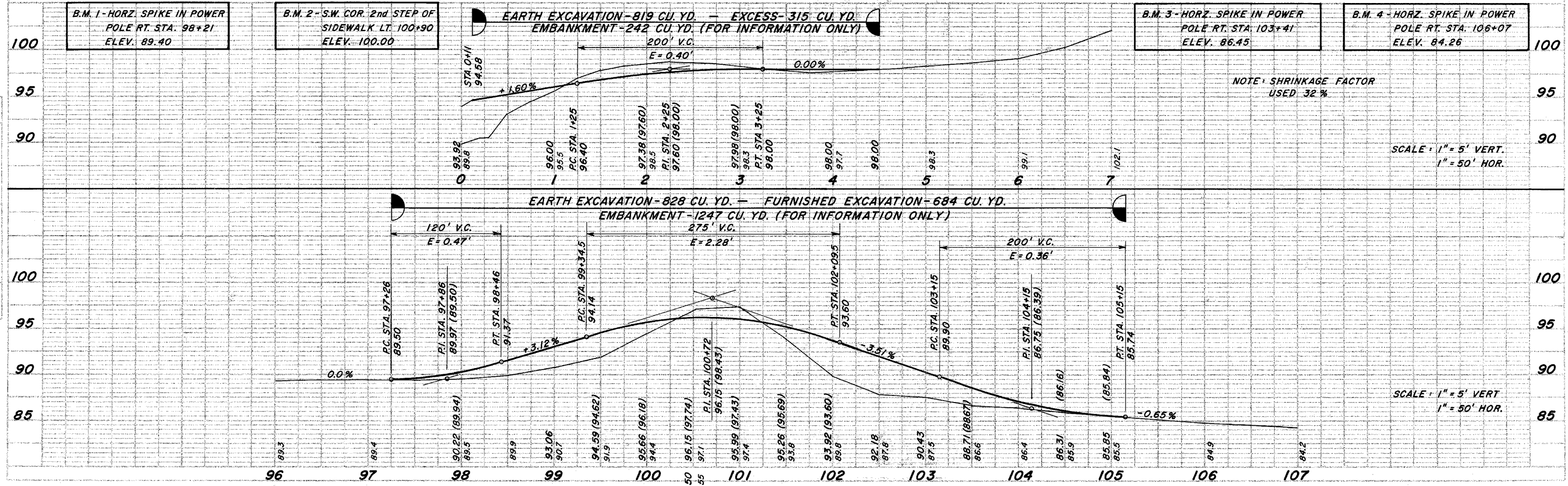
NOTE: IF METAL PIPE IS USED
IT SHALL BE RIVETED
(NOT SPIRAL) WITH
BOTH ENDS ROLLED.

CONSTRUCT NEW PAVEMENT
MAINLINE - STA. 96+50 TO 105+50
SIDE ROAD - STA. 0+12 TO 4+50

STA. 97+00 A.R. PIPE
CULVERTS, CL. D TY 1
2 AT 36" X 60' LONG
STONE RIPRAP CL. A 4
(SPECIAL) = 50 TON
PLACE RIPRAP AT EACH
END OF CULVERTS



SCALE: 1" = 50'



NOTE: SHRINKAGE FACTOR
USED 32%

SCALE: 1" = 5' VERT.
1" = 50' HOR.

SCALE: 1" = 5' VERT
1" = 50' HOR.