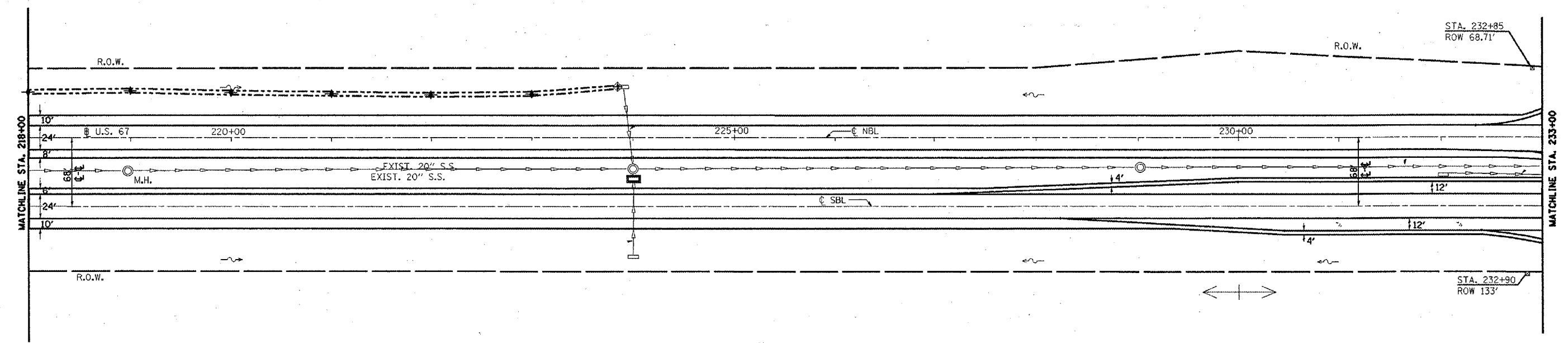
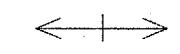


F.A.P. RTE.	SECTION	COUNTY	TOTAL SHEETS	SHEET NO.
310	(38-1) RS	MCDONOUGH	83	49
STA. 218+00		TO STA. 233+00		
FED. ROAD DIST. NO.	ILLINOIS	FED. AID PROJECT		

T6N R2W 4th P.M. (MACOMB TWP.)
SECTION 7



NOTE: THERE IS A DRAINAGE STRUCTURE @ STA. 219+00 THAT WAS NOT SHOWN ON OLD PLANS, THERE IS REVETMENT MAT AROUND STRUCTURE.

T6N R3W 4th P.M. (EMMET TWP.)
SECTION 12

EXISTING LEGEND

- CONCRETE REVETMENT MAT
- R.O.W. MARKER
- SUMMIT
- EXIST. DITCH CHECK
- PAVED DITCH
- EXIST. GUARDRAIL

PROPOSED LEGEND

- GUARDRAIL
- DITCH CHECK
- END SECTION REPLACEMENT
- PIPE CULVERT REPLACEMENT
- DITCH GRADING
- INLET PROTECTION
- RIPRAP A-5
- AGGREGATE DITCH



REVISIONS	
NAME	DATE

ILLINOIS DEPARTMENT OF TRANSPORTATION
PROPOSED PLAN SHEET
 STA. 218+00 TO 233+00
 SCALE: VERT. 1" = 50'
 HORIZ. 1" = 100'
 DATE ##DATE##
 DRAWN BY CADD
 CHECKED BY