

| | | | | |
|-----------------------------|---------------------------|--------------------|---------------------|----------------|
| ROUTE NO. FAS 330 | SECTION 04-00233-02-RS | COUNTY IROQUOIS | TOTAL SHEETS 4 | SHEET NO. 1 |
| F. H. W. A. REG. 4 ILLINOIS | | | PROJECT RS-330(106) | |
| CONTRACT 87311 | | | | |

INDEX OF SHEETS

| SHEET NUMBER | DESCRIPTION |
|--------------|--|
| 1 | COVER SHEET -- LOCATION MAP |
| 2 | SUMMARY OF QUANTITIES, GENERAL NOTES, AND MIXTURE TABLE |
| 3 | TYPICAL X-SECTIONS |
| 4 | TYPICAL ENTRANCES, SIDE ROAD INTERSECTIONS, MAIL BOX TURNOUTS, AND BUTT JOINTS |

STATE OF ILLINOIS DEPARTMENT OF TRANSPORTATION DIVISION OF HIGHWAYS

PLANS FOR PROPOSED IMPROVEMENT OF FEDERAL AID SECONDARY HIGHWAY 330 BUILT IN ACCORDANCE WITH L.A.P.P. POLICY

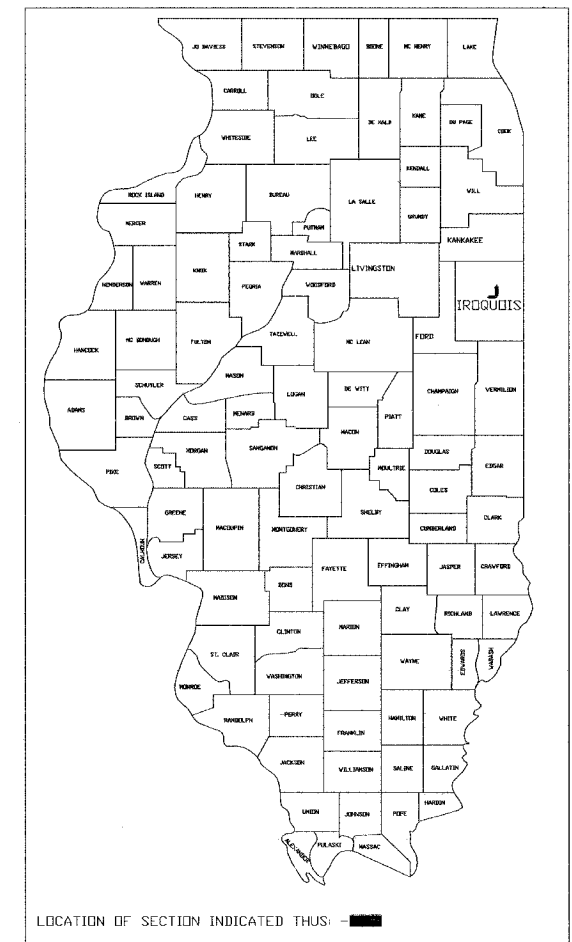
IROQUOIS COUNTY HIGHWAY PROJECT

| | |
|------------|---------------------------------|
| ROUTE | FAS 330 (IROQUOIS ROAD - CH 31) |
| SECTION | 04-00233-02-RS |
| PROJECT | RS-330(106) |
| JOB NUMBER | C-93-077-04 |

GROSS LENGTH OF IMPROVEMENT = 12545.00 FT. = 2.38 MI.
NET LENGTH OF IMPROVEMENT = 12545.00 FT. = 2.38 MI.
OMISSION LENGTH = 00.00 FT. = 0.00 MI.

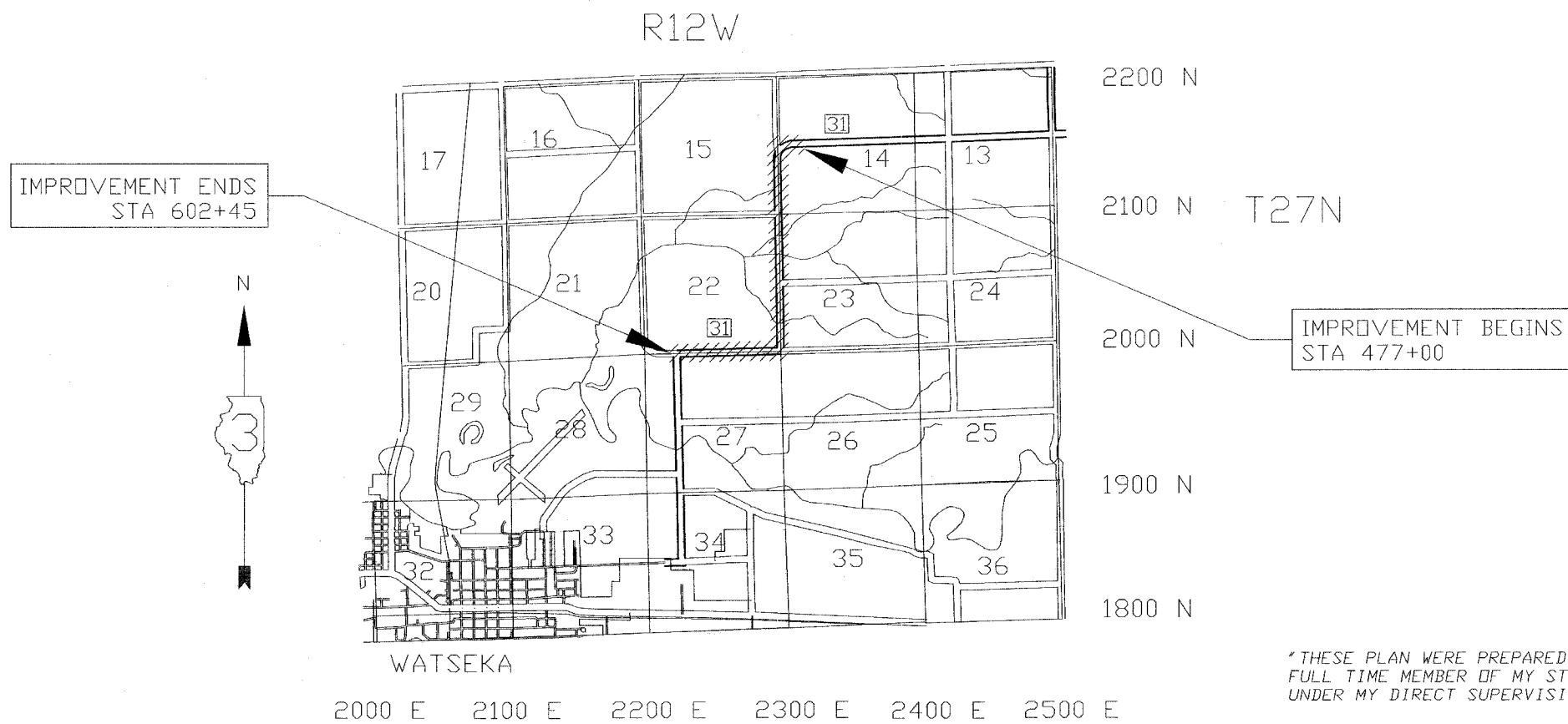
STANDARDS

| | |
|-----------|--|
| 000001-04 | SYMBOLS AND ABBREVIATIONS |
| 701301-02 | LANE CLOSURE, 2L 2W, SHORT TIME OPERATION, FOR SPEEDS > 45 MPH |
| 701306-01 | LANE CLOSURE, 2L 2W, SLOW MOVING DAY ONLY OPERATION, FOR SPEEDS > 45 MPH |
| 702001-05 | TRAFFIC CONTROL DEVICES |
| 780001-01 | TYPICAL PAVEMENT MARKINGS |
| BLR 24-1 | MAILBOX TURNOUT |



LOCATION OF SECTION INDICATED THUS: [Symbol]

FUNCTIONAL CLASSIFICATION = MAJOR COLLECTOR
CURRENT ADT = 515
DESIGN ADT = 567
DESIGN SPEED = 50 MPH



"THESE PLAN WERE PREPARED BY ME OR BY A FULL TIME MEMBER OF MY STAFF WORKING UNDER MY DIRECT SUPERVISION"



John C. Devine
JOHN C. DEVINE, COUNTY ENGINEER
ILL. REG. PROF. ENG. #062-033387
DATE EXPIRES: 11/30/05

CONTRACT 87311

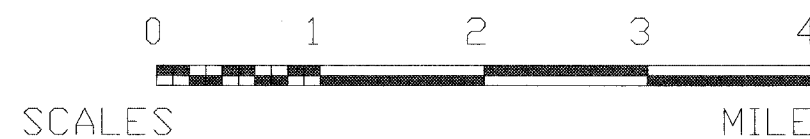
STATE OF ILLINOIS DEPARTMENT OF TRANSPORTATION

Approved April 13, 2005
John C. Devine
County Engineer
Passed April 15, 2005
John C. Devine
District Engineer of Local Roads and Streets
Approved APRIL 15, 2005
Gregory Mount
Region Engineer

NOTES:

1. JULIE # 1-800-892-0123

KNOWN UTILITIES
EASTERN ILLINI ELECTRIC CO-OP
VERIZON NORTH



| | | | | |
|-----------------------------|----------------|-----------|---------------------|-----------|
| ROUTE NO. | SECTION | COUNTY | TOTAL SHEETS | SHEET NO. |
| FAS 330 | 04-00233-02-RS | IRROQUOIS | 4 | 2 |
| F. H. W. A. REG. 4 ILLINOIS | | | PROJECT RS 330(106) | |

CONTACT 87311

SUMMARY OF QUANTITIES

| ITEM # | CODE # | ITEM | UNIT | QUANTITY |
|--------|----------|---|--------|----------|
| * 1 | X4066414 | BITUMINOUS CONCRETE SURFACE COURSE, SUPERPAVE, MIX "C", N50 | TON | 2700.00 |
| * 2 | X4066765 | LEVELING BINDER (MACHINE METHOD), SUPERPAVE N50 | TON | 2700.00 |
| * 3 | 20200500 | EARTH EXCAVATION (WIDENING) | CU YD | 65.00 |
| 4 | 40600100 | BITUMINOUS MATERIALS (PRIME COAT) | GALLON | 1750.00 |
| 5 | 40600300 | AGGREGATE (PRIME COAT) | TON | 70.00 |
| * 6 | 40600980 | BITUMINOUS SURFACE REMOVAL - BUTT JOINT | SQ YD | 448.00 |
| * 7 | 40800040 | INCIDENTAL BITUMINOUS SURFACING | TON | 168.00 |
| * 8 | 48101200 | AGGREGATE SHOULDERS, TYPE B | TON | 2700.00 |
| * 9 | 48202700 | BITUMINOUS SHOULDERS Superpave, 9" | SQ YD | 374.00 |
| 10 | 66700205 | PERMANENT SURVEY MARKER, TYPE 1 | EACH | 4.00 |
| *11 | 70100460 | TRAFFIC CONTROL AND PROTECTION, STANDARD 701306 | L SUM | 1.00 |
| 12 | 70300100 | SHORT-TERM PAVEMENT MARKING | FOOT | 2510.00 |
| 13 | 70300200 | TEMPORARY PAVEMENT MARKING | FOOT | 5789.00 |
| *14 | 70301000 | WORK ZONE PAVEMENT MARKING REMOVAL | SQ FT | 418.00 |
| 15 | 78001110 | PAINT PAVEMENT MARKING - LINE 4" | FOOT | 5789.00 |

* SEE SPECIAL PROVISIONS

GENERAL NOTES

THE THICKNESS OF BITUMINOUS MIXTURES SHOWN ON THE TYPICAL X-SECTION IS THE NOMINAL THICKNESS. DEVIATIONS FROM THE NOMINAL THICKNESS WILL BE PERMITTED WHEN SUCH DEVIATIONS OCCUR DUE TO IRREGULARITIES IN THE EXISTING SURFACE.

THE ENGINEER SHALL BE THE SOLE JUDGE CONCERNING CURING TIME FOR THE VARIOUS BITUMINOUS LIFTS.

FOR ALL PAVEMENT MARKINGS ON FINAL SURFACES (I.E., MAINLINE PAVEMENT), ONLY TEMPORARY PAVEMENT MARKING TAPE SHALL BE USED.

ANY REFERENCE TO A STANDARD IN THESE PLANS SHALL BE INTERPRETED TO MEAN THE EDITION AS INDICATED BY THE SUB-NUMBER LISTED IN THE INDEX OF SHEETS OR THE COPY OF THE STANDARD INCLUDED IN THESE PLANS.

THE FOLLOWING RATES OF APPLICATION HAVE BEEN ASSUMED IN CALCULATING PLAN QUANTITIES:

| | | |
|------------------------------------|-------|-----------------------------|
| GRANULAR MATERIALS | 2.05 | TONS/CU YD |
| BITUMINOUS MATERIALS PRIME COAT | 0.05 | GAL/SQ YD OR 0.35 GAL/SQ YD |
| AGGREGATE PRIME COAT | 0.002 | TONS/SQ YD |
| BITUMINOUS CONCRETE SURFACE COURSE | 112 | LBS/SQ YD/INCH |
| BITUMINOUS CONCRETE BINDER COURSE | 112 | LBS/SQ YD/INCH |
| LEVELING BINDER (MACHINE METHOD) | 112 | LBS/SQ YD/INCH |
| SHORT TERM PAVEMENT MARKING | 4 | FT/40 FT OF APPLICATION |
| PAINT PAVEMENT MARKING - LINE 4" | 10 | FT/40 FT OF APPLICATION |

SECTION NOTES

THE PROPOSED IMPROVEMENT CONSISTS OF A BITUMINOUS SURFACE COURSE INCLUDING LEVELING BINDER, SHOULDER STONE AND ALL WORK NECESSARY TO COMPLETE THE PROJECT ACCORDING TO THE PLANS AND SPECIFICATION.

THIS HIGHWAY WAS CONSTRUCTED UNDER SECTIONS 233-G AND 76-00233-01-SC

PERMANENT SURVEY MARKERS

| STATION | | |
|------------|-----------|-----------|
| *482+74.24 | 535+78.12 | 562+30.08 |
| 588+86.98 | | |

* STATIONING OF TR 302A

DESIGN DATA

FLEXIBLE PAVEMENT DESIGN FOR
CLASS III LOCAL ROAD (FAPLHI 5-8-110)

DESIGN PERIOD D. P. = 20 YEARS

DESIGN YEAR = 2025 PV=88% SU=7% MU=5%

DESIGN ADT = 567 IBR = 4.0 TRAFFIC FACTOR = 0.087

D_t = 2.7

MIXTURE TABLE

| | SURFACE | LEVEL BINDER |
|-----------------------|-----------|--------------|
| PG GRADE | PG64-22 | PG64-22 |
| MAX % RAP ALLOWABLE** | 15 | 15 |
| DESIGN AIR VOIDS | 4.0% | 4.0% |
| MIXTURE COMPOSITION | IL-9.5 | IL-9.5 |
| FRICTION AGGREGATE | MIXTURE C | |

** IF RAP OPTION IS SELECTED, THE ASPHALT CEMENT GRADE MAY NEED TO BE ADJUSTED. THIS WILL BE DETERMINED BY THE ENGINEER.

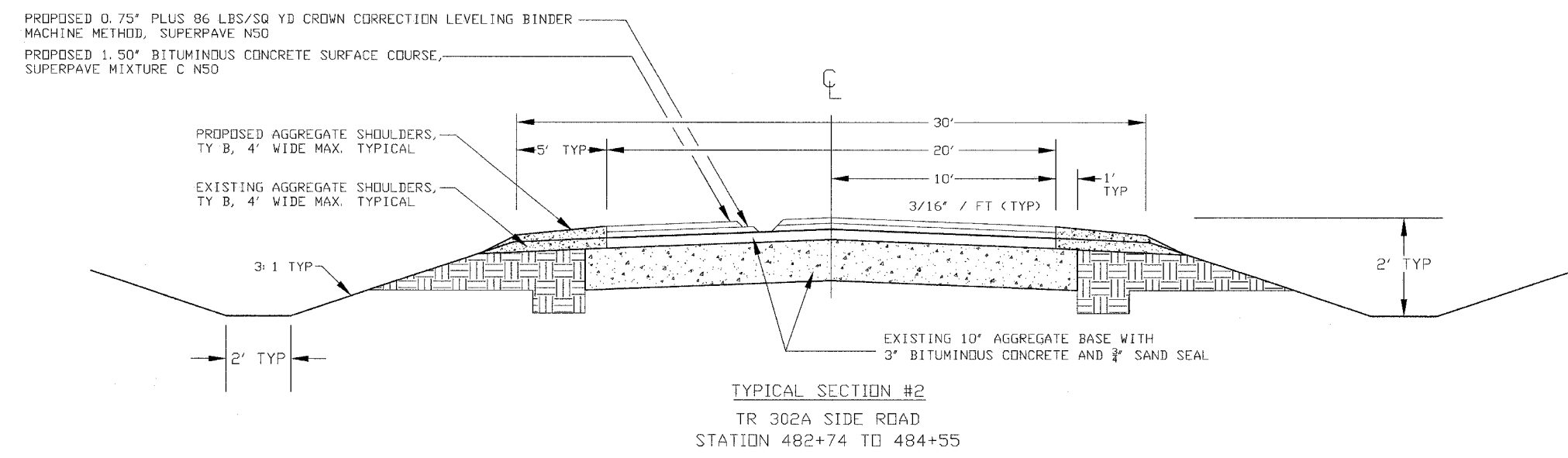
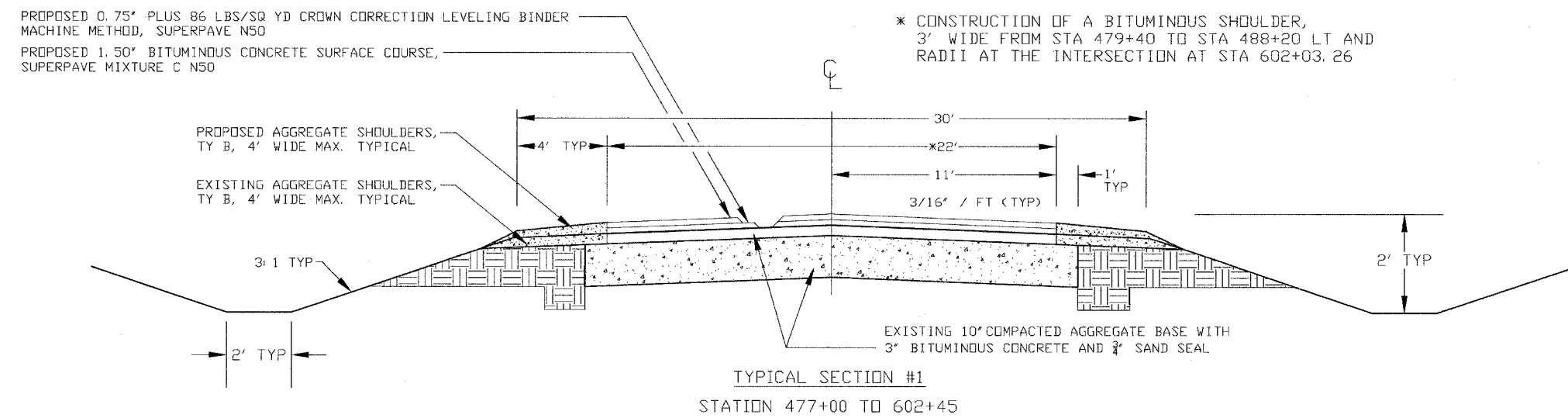
PAVEMENT MARKINGS & NO PASSING ZONES

| STATION TO STATION | FOOT | LINE 4" |
|---------------------|--------|---------|
| CENTERLINE | | |
| 477+00 TO 479+90 | 290 | 73 |
| 487+68 TO 602+45 | 11,477 | 2,870 |
| NO PASSING ZONES | | |
| 477+00 TO 487+68 RT | 1,068 | 1,068 |
| 479+90 TO 497+68 LT | 1,778 | 1,778 |
| TOTALS | | 5,789 |

EARTH EXCAVATION (WIDENING)

| STATION TO STATION | SIDE | CU YD |
|--------------------|------|-------|
| 479+40 TO 488+20 | LT | 50 |
| 562+30.08 Radius | RT | 5 |
| 602+03.26 Radii | LT | 10 |
| TOTALS | | 65 |

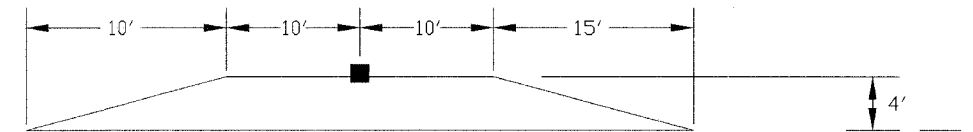
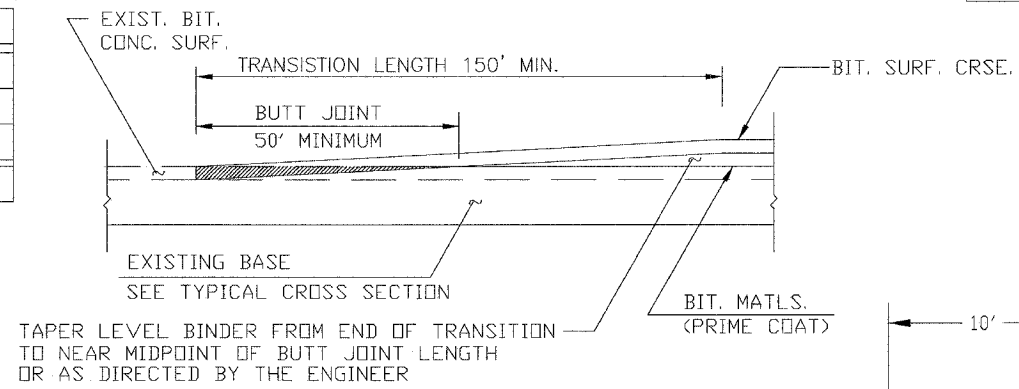
| | | | | |
|-----------------------------|----------------|-----------|---------------------|-----------|
| ROUTE NO. | SECTION | COUNTY | TOTAL SHEETS | SHEET NO. |
| FAS 330 | 04-00233-02-RS | IRROQUOIS | 4 | 3 |
| F. H. W. A. REG. 4 ILLINOIS | | | PROJECT RS-330(106) | |
| CONTRACT 87311 | | | | |



BITUMINOUS SURFACE REMOVAL - BUTT JOINT

| STATION TO STATION & GENERAL DESCRIPTION | SQ. YD. |
|--|---------|
| STA 477+00 - BEGINNING TRANSITION | 112 |
| TR 302A - PRIEST CORNER | 112 |
| STA 602+45 - ENDING TRANSITION | 224 |
| TOTALS | 448 |

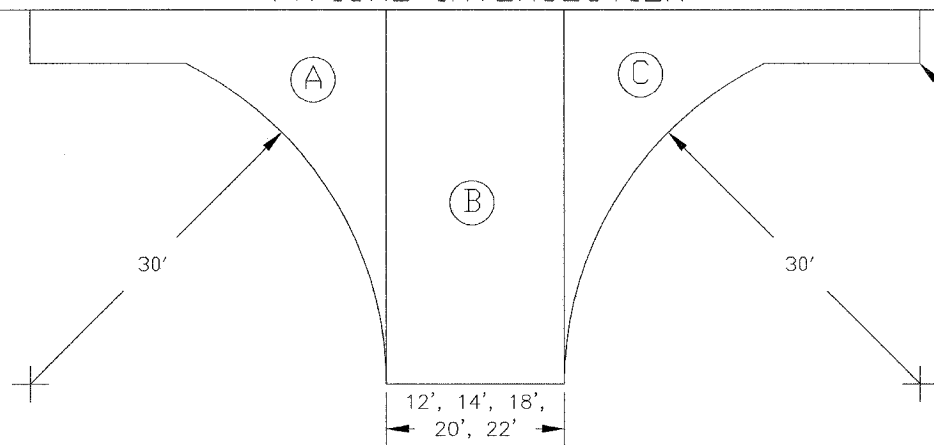
BITUMINOUS SURFACE REMOVAL - BUTT JOINT



TYPICAL MAILBOX TURNOUT

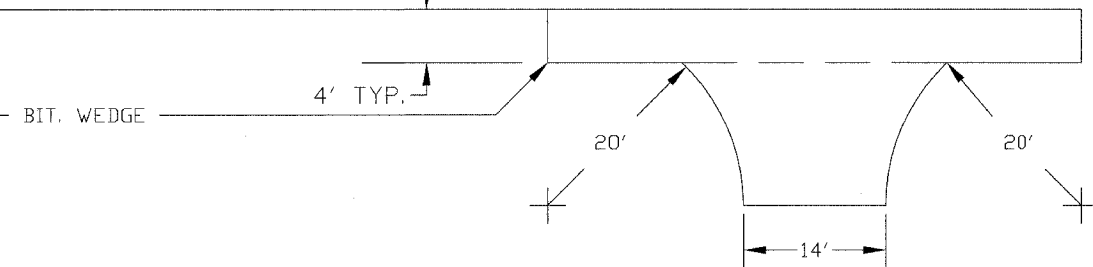
☐ PAVEMENT

TYPICAL INTERSECTION



A+C = RADIUS ON MAINLINE SHOWN AS SIDE = VAR
A+B+C = TYPICAL SIDE ROAD INTERSECTION

TYPICAL PRIVATE & FIELD ENTRANCES



NOTE: ALL PRIVATE ENTRANCES, MAIL BOX TURNOUTS AND SIDE ROAD INTERSECTIONS SHALL BE PAID FOR AS INCIDENTAL BITUMINOUS SURFACING - TOTAL 168 TON.

TYPICAL PRIVATE ENTRANCES

| STATION | TYPE SIDE | SQ. YD. | TON | STATION | TYPE SIDE | SQ. YD. | TON |
|---------|-----------|-----------|--------|---------|-----------|---------|-----|
| 477+81 | PE LT | 57 | 8 | 564+64 | PE RT | 57 | 8 |
| 478+22 | PE LT | 57 | 8 | 565+69 | PE RT | 57 | 8 |
| 479+09 | PE LT | 57 | 8 | 577+04 | PE RT | 57 | 8 |
| 489+72 | PE RT | 57 | 8 | 577+86 | PE RT | 57 | 8 |
| 540+30 | PE LT | 57 | 8 | | | | |
| TOTALS | | 513 SQ YD | 72 TON | | | | |

TYPICAL INTERSECTION

| STATION | SIDE | WIDTH | SQ. YD. | TON |
|-----------|------------|-------|---------|-----|
| * 484+66 | TR 302A RT | 20' | 50 | 12 |
| 509+26.16 | TR 117 RT | 14' | 122 | 14 |
| 535+78.12 | TR 131 LT | 12' | 115 | 14 |
| 562+30.08 | TR 139 LT | 18' | 138 | 16 |
| 602+03.26 | CH 31 LT | 22' | 153 | 20 |
| TOTALS | | | 578 | 76 |

* ONLY RADII

TYPICAL MAILBOX TURNOUT

| STATION | SIDE | SQ. YD. | TON |
|---------|------|-----------|--------|
| 478+39 | RT | 30 | 8 |
| 489+72 | RT | 15 | 4 |
| 565+69 | LT | 15 | 4 |
| 577+39 | LT | 15 | 4 |
| TOTALS | | 75 SQ YDS | 20 TON |