

INDEX OF SHEETS

Sheet No.	Description
1	COVER SHEET
2	TYPICAL CROSS SECTION AND DETAILS
3	DETAILS & SCHEDULES

STANDARDS

701301-02	TRAFFIC CONTROL
701306-01	TRAFFIC CONTROL
702001-05	TRAFFIC CONTROL

SUMMARY OF QUANTITIES

CODE NO.	DESCRIPTION	QUANTITY	UNIT
* X4066518	POLYMERIZED BITUMINOUS CONCRETE SURFACE COURSE, SUPERPAVE, MIX "C", N90	2672	TON
X4066775	LEVELING BINDER (MACHINE METHOD), SUPERPAVE N90	2635	TON
* 20200100	EARTH EXCAVATION	20	CU YD
* 35100100	AGGREGATE BASE COURSE, TYPE A	41	TON
* 40600100	BITUMINOUS MATERIALS (PRIME COAT)	6315	GALLON
40600300	AGGREGATE (PRIME COAT)	128	TON
40600980	BITUMINOUS SURFACE REMOVAL - BUTT JOINT	262	SQ YD
40600990	TEMPORARY RAMP	35	SQ YD
40800040	INCIDENTAL BITUMINOUS SURFACING	80	TON
44300100	AREA REFLECTIVE CRACK CONTROL TREATMENT	8800	SQ YD
44300200	STRIP REFLECTIVE CRACK CONTROL TREATMENT	9131	FOOT
* 48101200	AGGREGATE SHOULDERS, TYPE B	1787	TON
* 70100460	TRAFFIC CONTROL AND PROTECTION, STANDARD 701306	1	L SUM
* 70300100	SHORT-TERM PAVEMENT MARKING	2558	FOOT

Construction Code 1000
* Special Provisions

CONSTRUCTION ENDS
STA. 214+61
(NORTH E.O.P. IL RT 115)

CONTRACT NO. 87307

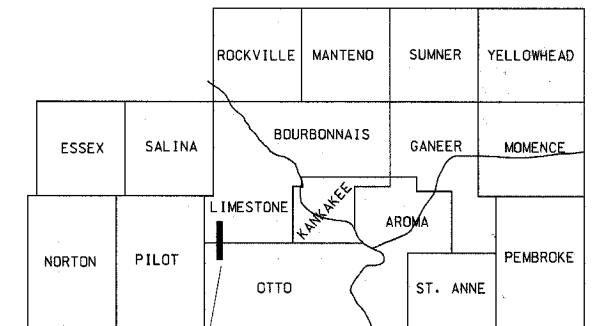
J.U.L.I.E. 1-800-892-0123

STATE OF ILLINOIS
DEPARTMENT OF TRANSPORTATION
COUNTY OF KANKAKEE
DEPARTMENT OF HIGHWAYS
PLANS FOR PROPOSED
FEDERAL AID SECONDARY PROJECT
SECTION 02-00072-06-RS
F.A.S. 316 (C.H.28) PROJECT RS-316 (108)
JOB NO. C-93-046-05

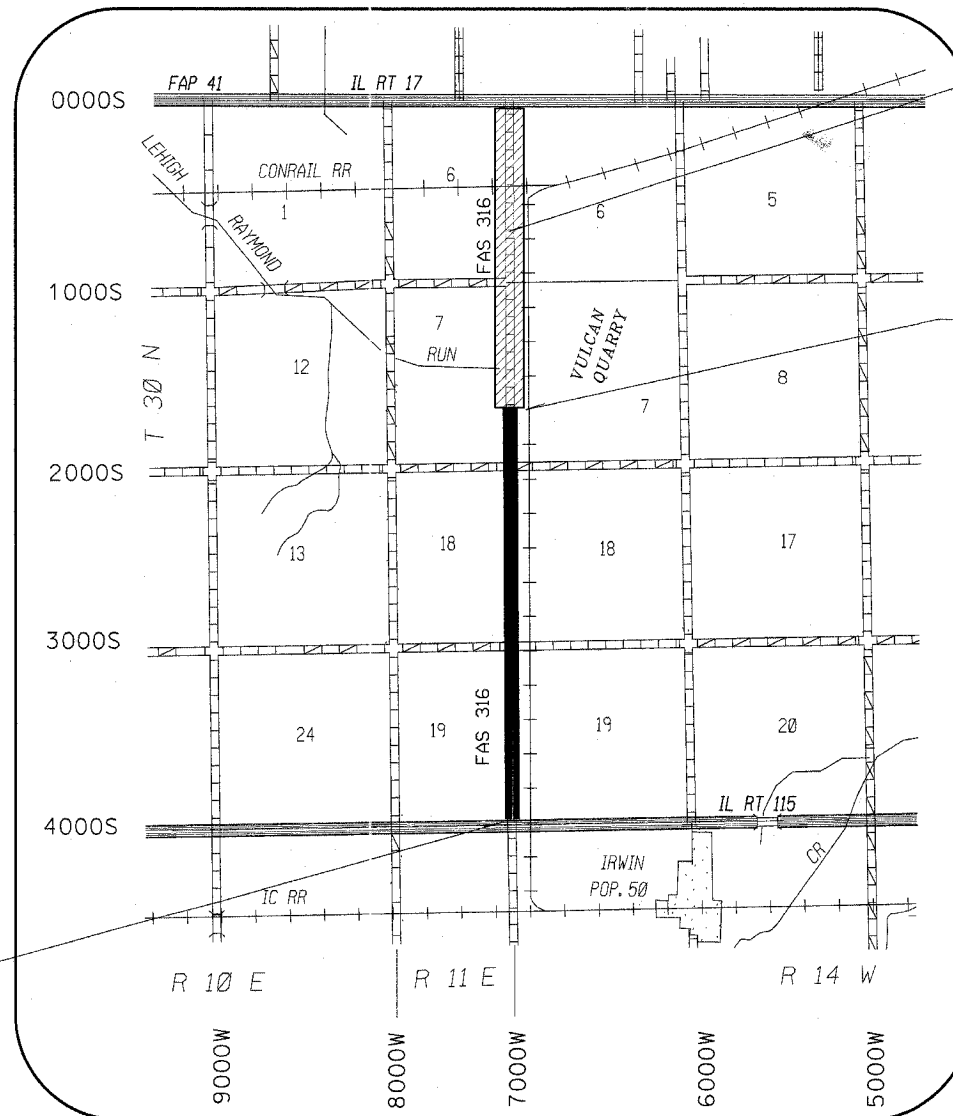
F.A.S. ROUTE NO.	SEC.	COUNTY	NO. SHEETS	SHEET NO.
316	*	Kankakee	3	1
ILLINOIS PROJECT RS-316 (108)			CONTRACT NO. 87307	

* 02-00072-06-RS

KANKAKEE COUNTY



PROJECT LOCATION



STA. 0+07 TO STA. 87+00
ROAD IMPROVEMENT SEGMENT
UNDER A SEPARATE CONTRACT.
SEC. 02-00072-07-RS

CONSTRUCTION
STARTS
STA. 86+70

THE ACCEPTANCE OF THIS PROJECT
IS BASED ON THE MINIMUM DESIGN
CRITERIA FOR LOCAL AGENCY
PAVEMENT PRESERVATION POLICY
(LAPP) PROJECTS

CLASS III ROAD
2005 CURRENT A.D.T. = 1337
2015 DESIGN A.D.T. = 1479
DESIGN SPEED = 55 M.P.H.
ROADWAY CLASSIFICATION = COLLECTOR

STATE OF ILLINOIS
DEPARTMENT OF TRANSPORTATION
DIVISION OF HIGHWAYS

Submitted April 6, 2005

James W. Piekarczyk, P.E.
County Engineer

Passed 4/11, 2005

James R. Threadgill III
Bureau Chief, Local Roads & Streets

Approved APRIL 11, 2005

Gregory L. Mounts, P.E.
Region 2 Engineer



GROSS LENGTH = 12,791 LIN FT = 2.423 MILES