

S.W. 1/4, SEC. 32, T. 29 N., R. 14 W., 2ND P.M.

MELVIN LINDGREN TRUST

ROLLAND & RUTH ROSENBOOM

ROUTE	SECTION	COUNTY	TOTAL SHEETS	SHEET NO.
T.R. 33C	01-07125-00-BR	IROQUOTS	17	3
STA. 10+50	TO STA. 26+50		PROJ. BROS-075(125)	
ILLINOIS			CONTRACT NO. 87288	

**EXISTING STRUCTURE NO. 038-3630:**

SINGLE SPAN PRATT TRUSS WITH TIMBER PLANK DECKING ON CONCRETE ABUTMENTS; 82.0' BK.-BK. ABUTS., 16.0' F.-F. TRUSS, SKEW = 0°

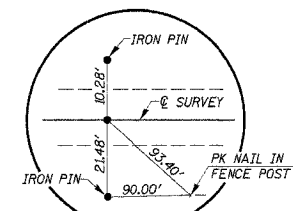
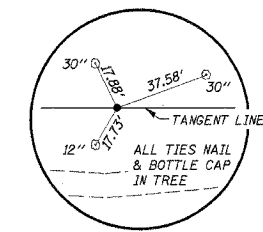
REMOVAL OF EXISTING STRUCTURES = 1 EACH

**CHANNEL EXCAVATION**

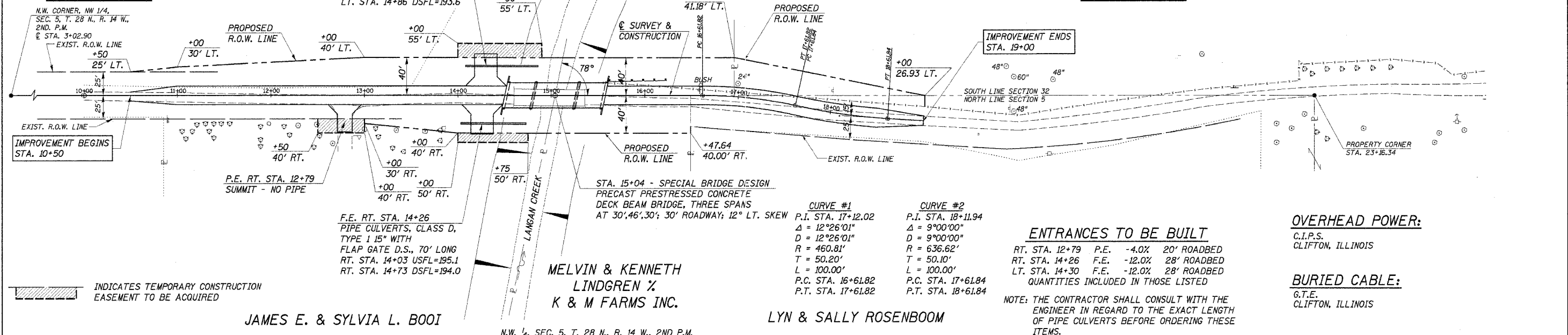
THE CHANNEL SHALL BE EXCAVATED AS SHOWN WITHIN THE LIMITS OF THE PROPOSED STRUCTURE THEN TAPER TO THE EXISTING CHANNEL AT THE R.O.W. LINES. SUITABLE EXCAVATED MATERIAL TO BE USED IN THE EMBANKMENT AS DIRECTED BY THE ENGINEER.

CHANNEL EXCAVATION = 500 CU. YD.

P.O.T. STA. 20+00.00 (TANGENT LINE)  
IRON PIN (FLUSH)



P.O.T. STA. 10+00.00  
IRON PIN (FLUSH)



**ENTRANCES TO BE BUILT**

RT. STA.	P.E.	F.E.	ROADBED
RT. STA. 12+79	P.E. -4.0%	F.E. -12.0%	20' ROADBED
RT. STA. 14+26	P.E. -12.0%	F.E. -12.0%	28' ROADBED
LT. STA. 14+30	P.E. -12.0%	F.E. -12.0%	28' ROADBED

QUANTITIES INCLUDED IN THOSE LISTED  
NOTE: THE CONTRACTOR SHALL CONSULT WITH THE ENGINEER IN REGARD TO THE EXACT LENGTH OF PIPE CULVERTS BEFORE ORDERING THESE ITEMS.

**OVERHEAD POWER:**

C.I.P.S.  
CLIFTON, ILLINOIS

**BURIED CABLE:**

G.T.E.  
CLIFTON, ILLINOIS

DATE	BY	REVISION

DATE	BY	REVISION

