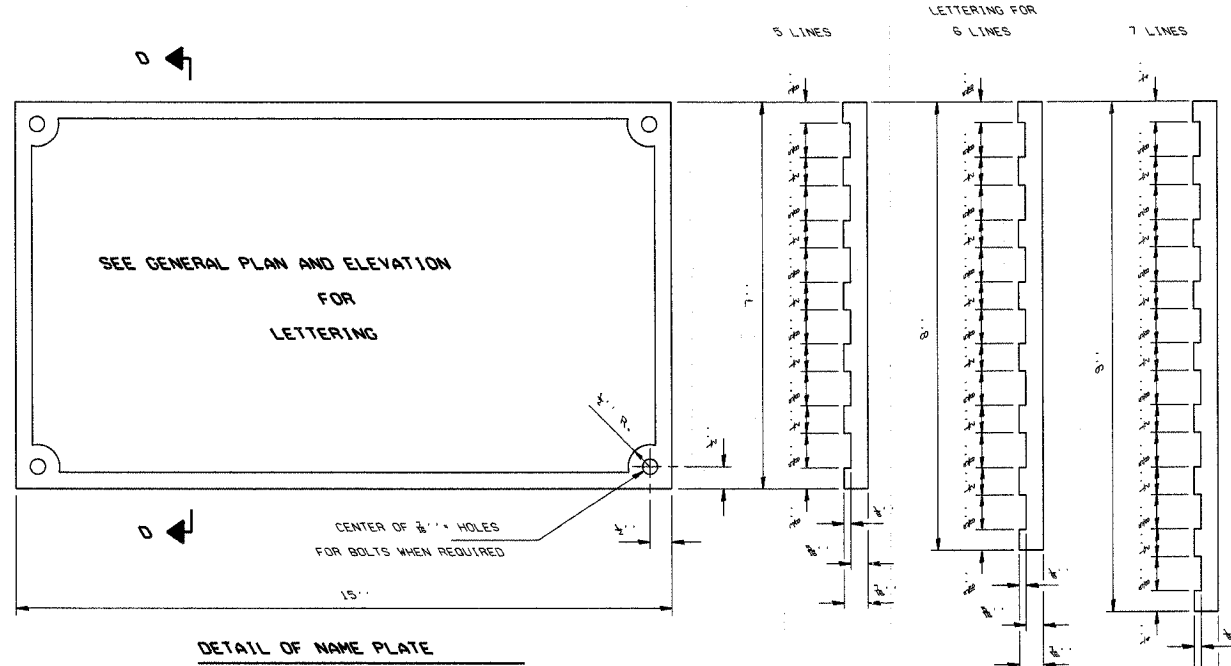
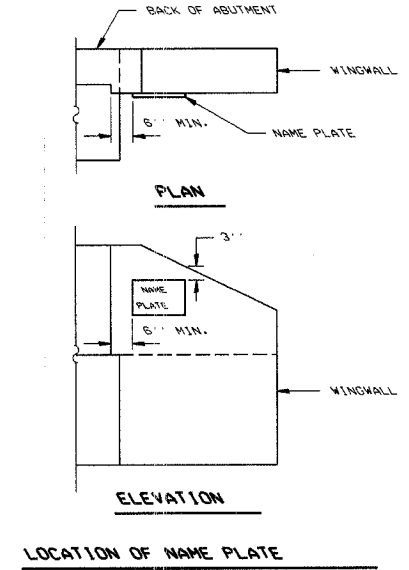


| | | | | |
|-------------------------|---------------|--------|--------------|-----------|
| TR RTE | ROAD DISTRICT | COUNTY | TOTAL SHEETS | SHEET NO. |
| TR 116 | OSCO | HENRY | 11 | 10 |
| SECTION: 04-18125-00-BR | | | | |



MATERIAL: BEST QUALITY BRASS OR BRONZE.
 BORDER & LETTERING: RAISED 1/8 INCH. SQUARE CUT AND NOT TAPERED. TOP SURFACE POLISHED.
 FASTENINGS: FOUR LUGS AT LEAST THREE INCHES LONG. CAST ON BACK OF PLATE.



Illinois Department of Transportation

PASSED November 1, 1995

Gregory D. Kasper
 Engineer of Bridge Design

APPROVED November 1, 1995

Ralph E. Walker
 Engineer of Bridges and Structures

ISSUED 7-1-95

NAME PLATE

STANDARD CN