

INDEX OF SHEETS

Sheet No. 1	Cover Sheet
Sheet No. 2	Plan & Profile
Sheet No. 3	Cross Sections
Sheet No. 4	Cross Sections
Sheet No. 5	General Plan & Elevation
Sheet No. 6	P.P.C. Deck Beam Superstructure
Sheet No. 7	P.P.C. Deck Beam Details
Sheet No. 8	P.P.C. Deck Beam Abutment
Sheet No. 9	Railing
Sheet No. 10	Name Plate
Sheet No. 11	Piling

STATE OF ILLINOIS  
DEPARTMENT OF TRANSPORTATION

PLANS FOR  
PROPOSED LOCAL AGENCY IMPROVEMENT  
FEDERAL AID BRRP PROJECT  
HENRY COUNTY  
OSCO ROAD DISTRICT TR 116  
SECTION 04-18125-00-BR  
PROJECT BROS-073(52) JOB NO C-92-074-04  
CONTRACT 85359

TR RTE	ROAD DISTRICT	COUNTY	TOTAL SHEETS	SHEET NO.
TR 116	OSCO	HENRY	11	1
SECTION: 04-18125-00-BR				

TRAFFIC CONTROL STANDARDS

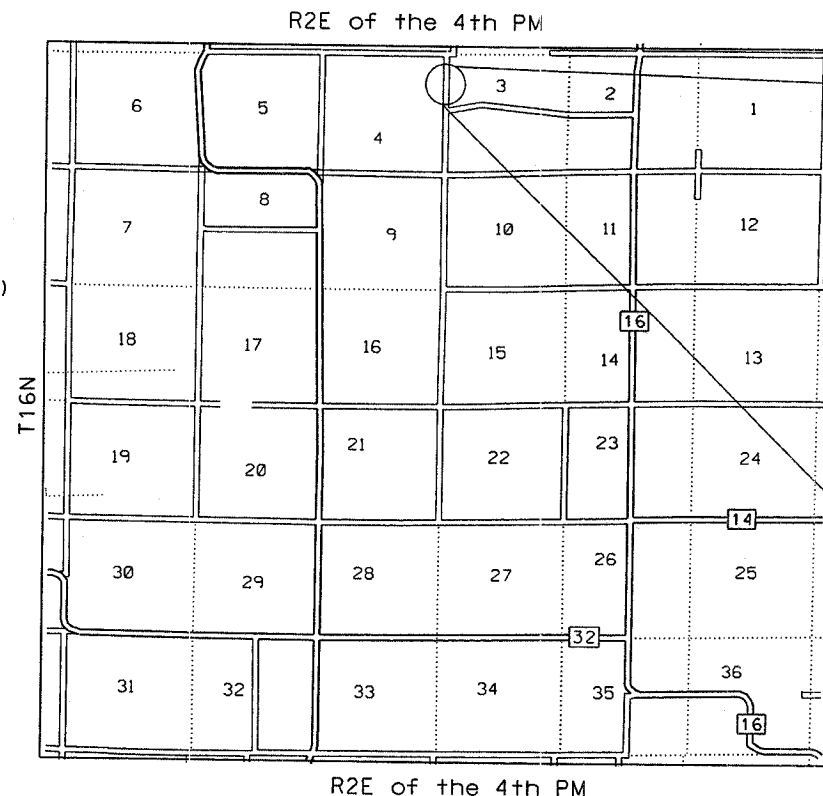
702001-05 BLR 21-6  
280001-02

SCHEDULE OF QUANTITIES

CONSTRUCTION TYPE CODE X081-2A

CODE QUANTITY UNIT DESCRIPTION

20100110	13	Unit	Tree Removal (6-15 Units Diameter)
20100210	25	Unit	Tree Removal (over 15 Units Dia)
20200100	123	Cu Yd	Earth Excavation
20300100	183	Cu Yd	Channel Excavation
20400800	640	Cu Yd	Furnished Excav
25000330	0.68	Acre	Seeding CI 6
25000400	61	Pound	Nitrogen Fert Nutr
25000500	61	Pound	Phosphorus Fert Nutr
25000600	61	Pound	Potassium Fert Nutr
25100120	1.4	Ton	Mulch Method 2
28000300	4	Each	Temp Ditch Checks
28100707	498	Sq Yd	Stone Dump Rip CL A4
35101400	517	Ton	Agg Base Cse B
50100100	1	Each	Rem Exist Struct
50200100	31	Cu Yd	Structure Excavation
50300225	18.2	Cu Yd	Conc Structures
50400505	1438	Sq Ft	P P Conc Dk Bm 27 Dp
50800105	1980	Pound	Reinforcement Bars
50900205	120	Foot	Steel Railing Ty S1
51201400	168	Foot	Fur Steel Piles HP 10x42
51202700	168	Foot	Driving Steel Piles
51203400	1	Each	Test Pile Steel HP 10x42
51204315	2.1	Cu Yd	Concrete Encasement
51204600	7	Each	Metal Shoes
51500100	1	Each	Name Plates
542D0220	34	Foot	P Cul CI D 1 15



LOCATION MAP

NET LENGTH OF SECTION = 625 FEET = 0.12 MILES

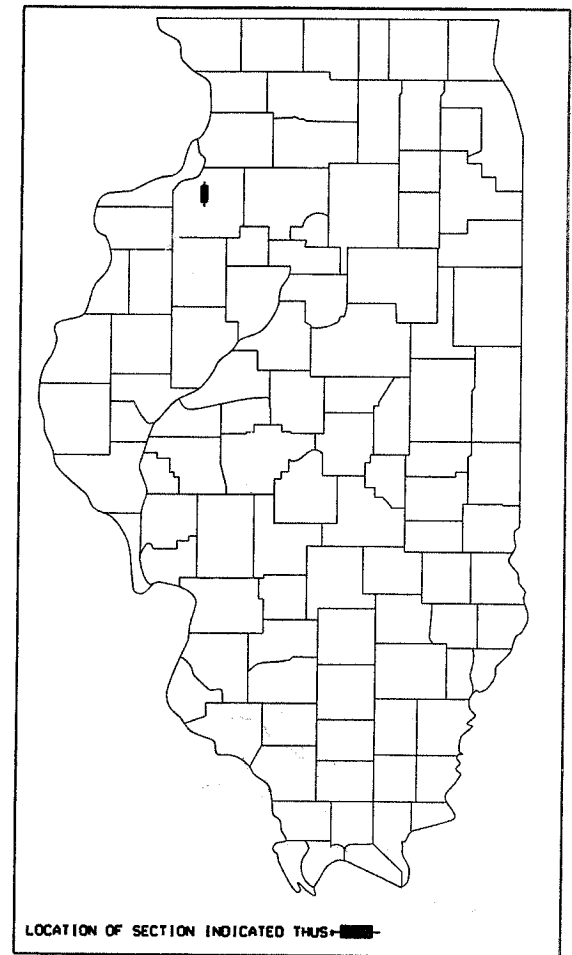
SCALES

PLAN 1" = 50'  
PROFILE HORI. 1" = 50'  
PROFILE VERT. 1" = 5'  
CROSS SECTION 1" = 5'

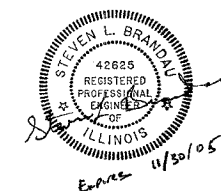
Section 04-18125-00-BR ends at Station 209+00.

Section includes construction of a single span (60') bridge with precast prestressed concrete deck beams (27" deep), skewed 10° right ahead on concrete pile bent abutments. Also included are aggregate base approach roadways.

Section 04-18125-00-BR begins at Station 202+75.



LOCATION OF SECTION INDICATED THUS



THESE PLANS WERE PREPARED BY ME OR BY THE FULL TIME MEMBERS OF MY STAFF.

*Steven L. Brandau*  
STEVEN L. BRANDAU  
P.E. 42625

STATE OF ILLINOIS  
DEPARTMENT OF TRANSPORTATION  
DIVISION OF HIGHWAYS

APPROVED *April 12<sup>th</sup> 2005*  
*Steven L. Brandau* COUNTY ENGINEER

PASSED *April 19<sup>th</sup> 2005*  
*John J. [Signature]* DISTRICT ENGINEER OF LOCAL ROADS & STREETS

APPROVED *April 19<sup>th</sup> 2005*  
*Barry L. Mowbray* DISTRICT ENGINEER