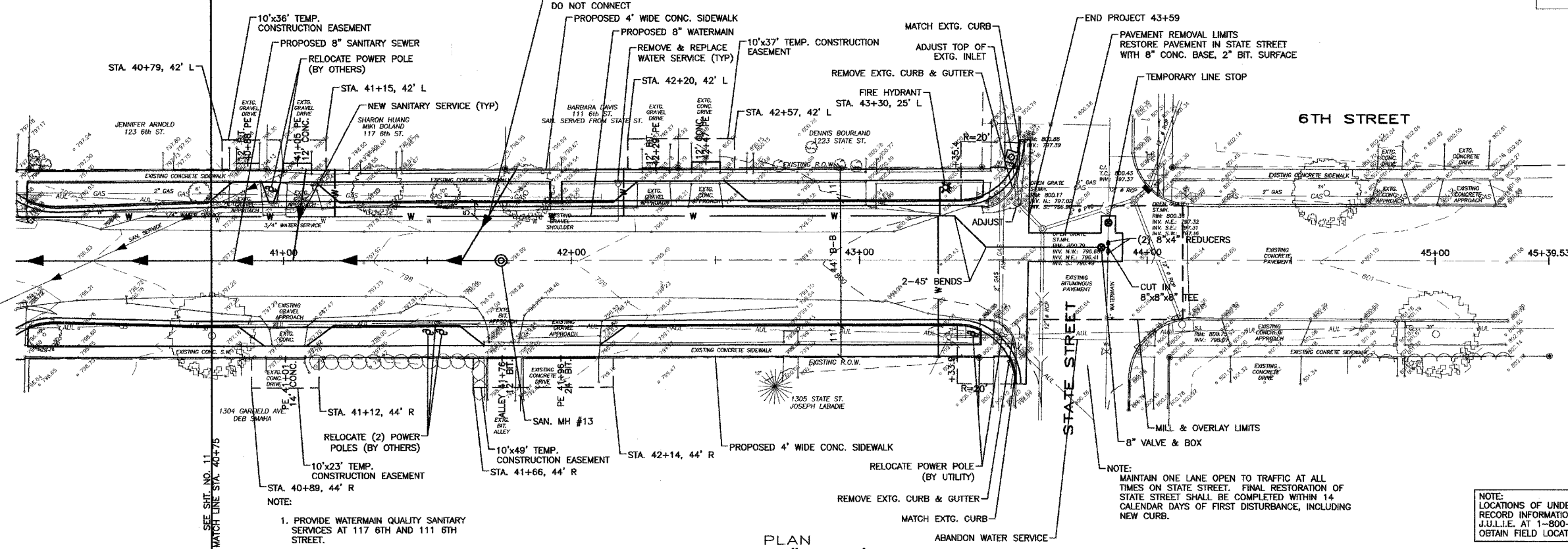


F.A. RTE.	SECTION	COUNTY	TOTAL SHEETS	SHEET NO.
5012	02-00098-00-FP	BOONE	30	12
STA. 40+75 TO STA. 43+59				
ILLINOIS FED. AID PROJECT				



# 6TH STREET

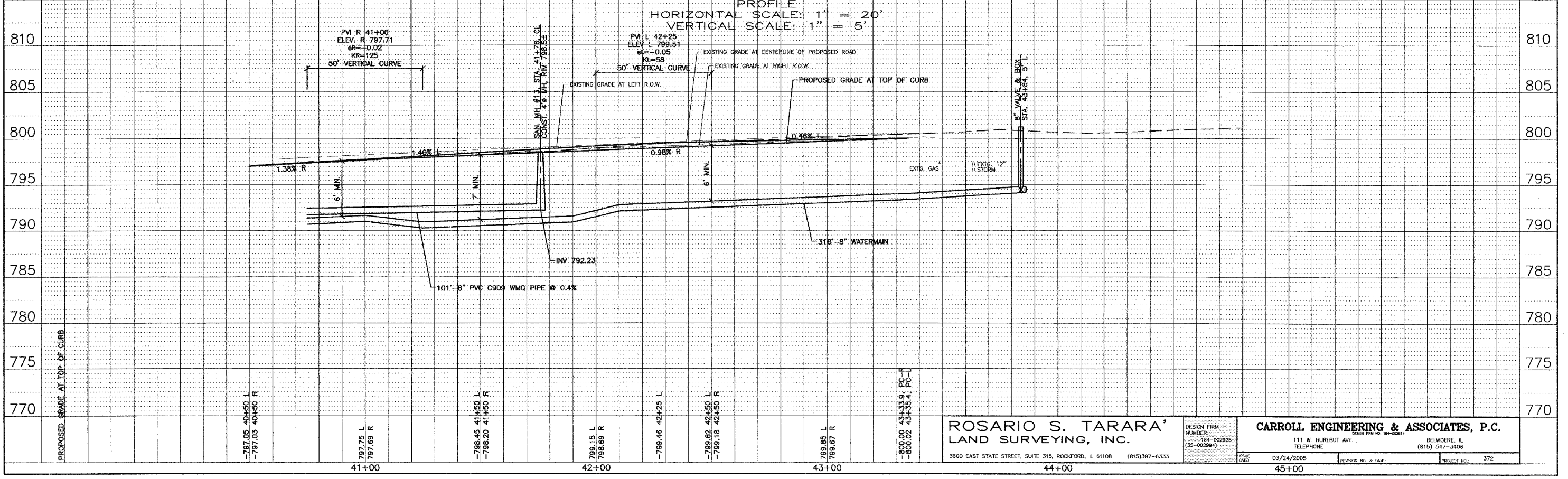


1. PROVIDE WATERMAIN QUALITY SANITARY SERVICES AT 117 6TH AND 111 6TH STREET.

NOTE: MAINTAIN ONE LANE OPEN TO TRAFFIC AT ALL TIMES ON STATE STREET. FINAL RESTORATION OF STATE STREET SHALL BE COMPLETED WITHIN 14 CALENDAR DAYS OF FIRST DISTURBANCE, INCLUDING NEW CURB.

NOTE: LOCATIONS OF UNDERGROUND UTILITIES ARE TAKEN FROM RECORD INFORMATION AND ARE APPROXIMATE. CALL J.L.L.I.E. AT 1-800-892-0123, BEFORE DIGGING, TO OBTAIN FIELD LOCATIONS.

PLAN SCALE: 1" = 20'  
 PROFILE SCALE: 1" = 20'  
 HORIZONTAL SCALE: 1" = 20'  
 VERTICAL SCALE: 1" = 5'



PLAN	DATE
NO.	

PROFILE	DATE
NO.	

**ROSARIO S. TARARA**  
 LAND SURVEYING, INC.  
 3600 EAST STATE STREET, SUITE 315, ROCKFORD, IL 61108 (815)397-6333

DESIGN FIRM NUMBER: 184-002928 (33-00294)

**CARROLL ENGINEERING & ASSOCIATES, P.C.**  
 111 W. HURLBUT AVE. BELVIDERE, IL (815) 547-3406

DATE: 03/24/2005  
 REVISION NO. & DATE:  
 PROJECT NO.: 372