

PLANS FOR PROPOSED ILLINOIS TRANSPORTATION ENHANCEMENT PROGRAM "LOWELL TRAIL"

FAS ROUTE NO.	SEC	COUNTY	TOTAL SHEETS	SHEET NO
-	*	LEE	20	1

ILLINOIS PROJECT TE-D2(115)

* 01-P4000-00-BT

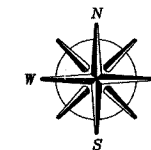
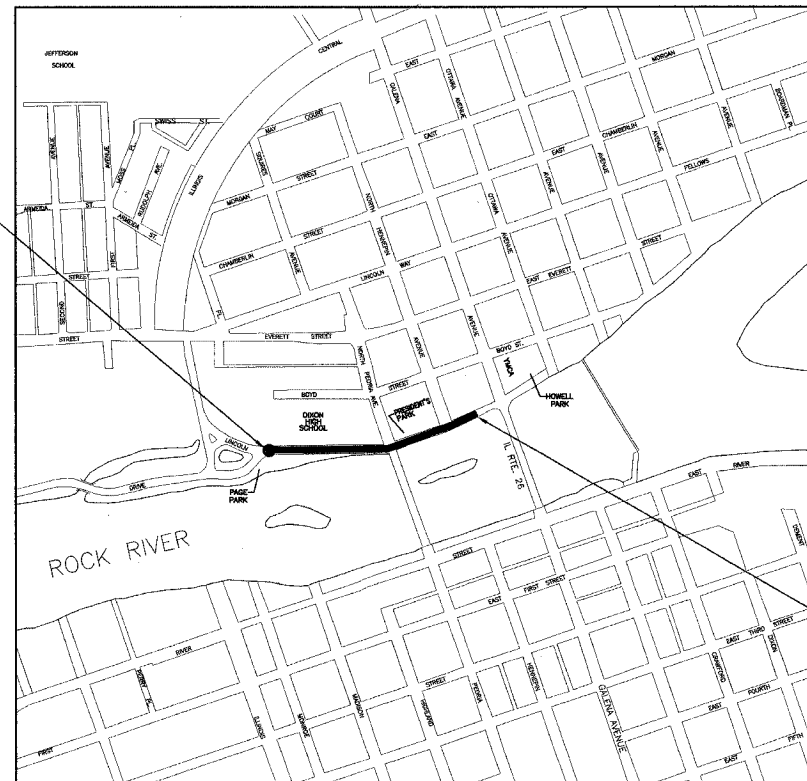
SECTION 01-P4000-00-BT DIXON PARK DISTRICT ILLINOIS PROJECT TE-D2(115)

JOB NO. C-92-100-02
CONTRACT NO. 85335
ITEP #201657

INDEX OF SHEETS

1. INDEX OF SHEETS & LOCATION MAP
2. SUMMARY OF QUANTITIES & GENERAL NOTES
3. TYPICAL SECTIONS
4. SCHEDULE OF QUANTITIES
5. DEMOLITION PLAN
- 7-8 PLAN & PROFILE
- 9-12 RETAINING WALL DETAILS
- 13 GENERAL DETAILS
- 14 TREE REPLACEMENT PLAN
- 15 EROSION & SEDIMENT CONTROL PLAN
- 16-20 CROSS SECTIONS

SECTION 01-P4000-00-BT
CONSTRUCTION BEGINS AT STA. 100+00



BENCHMARK INFORMATION

- BM #21 - CHISELED "X" ON NORTH FLANGE BOLT OF F.H. ±500' WEST OF BENCHMARK 24, N. SIDE OF LINCOLN STATUE DR. ELEV. 651.21
- BM #24 - CHISELED "X" ON N. TOP FLANGE BOLT OF F.H. @ N.W. QUAD OF PEORIA AVE & LINCOLN STATUE DR. ELEV. 653.98
- BM #25 - RR SPIKE IN EAST FACE OF P.P. ±150' S. OF INTERSECTION OF EVERT ST. & LINCOLN STATUE DR. ON W. SIDE OF NATIONAL GUARD BLDG. ON E. SIDE OF RD. ELEV. 664.58

SECTION 01-P4000-00-BT
CONSTRUCTION ENDS AT STA. 111+61

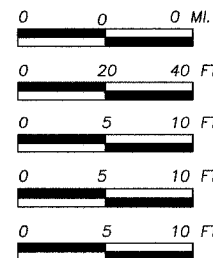
STANDARDS

- 280001-02 TEMPORARY EROSION CONTROL SYSTEMS
- 720001 SIGN PANEL MOUNTING DETAILS
- 720006 SIGN PANEL ERECTION DETAILS
- 720011 METAL POST FOR SIGNS, MARKERS & DELINEATORS
- 729001 APPLICATIONS OF TYPE A AND B METAL POSTS (FOR SIGNS & MARKERS)
- 814001 CONCRETE HANDHOLES

CITY OF DIXON LOCATION MAP

NET LENGTH = 1161 FEET = 0.220 MILE

LOCATION MAP SCALE



- PLAN & PROFILE — HORIZONTAL
- VERTICAL
- CROSS SECTIONS — HORIZONTAL
- VERTICAL

OPERATES 24 Hours See Sign
CALL JULIE 1-800-892-0123
WITH THE FOLLOWING:
COUNTY — LEE
CITY/TOWNSHIP — DIXON
SEC. 4 & 8, SEC. 40 & 8
48 Hours Before You Dig,
EXCLUDING SAT., SUN., & HOLIDAYS

PLANS PREPARED BY:

WENDLER ENGINEERING SERVICES, INC.

DIXON PARK DISTRICT
APPROVED 3-17, 2005
Debra Carey
DEBRA CAREY - EXECUTIVE DIRECTOR

PROFESSIONAL ENGINEER
DAVID A. WEBER
062-047743
STATE OF ILLINOIS
David A. Weber

March 16, 2005 DATE
DAVID A. WEBER
STERLING, ILLINOIS
ILLINOIS LICENSED PROFESSIONAL
ENGINEER NO. 062-047743
EXPIRES 11-30-2005

STATE OF ILLINOIS
DEPARTMENT OF TRANSPORTATION
SUBMITTED MARCH 30, 2005
Gregory J. Mowbray
LOCAL AGENCY REPRESENTATIVE AND
STREETS
APPROVED MARCH 30, 2005
Gregory J. Mowbray
DISTRICT ENGINEER

FAS ROUTE NO	SEC	COUNTY	TOTAL SHEETS	SHEET NO
-	*	LEE	20	2
ILLINOIS PROJECT TE-D2(115)				
* 01-P4000-00-BT				

SUMMARY OF QUANTITIES
CONSTRUCTION TYPE CODE: Y047

GENERAL NOTES


ITEM NUMBER	ITEM	UNIT	QUANTITY
20100110	TREE REMOVAL (6 TO 15 UNITS DIAMETER)	UNIT	14
20100210	TREE REMOVAL (OVER 15 UNITS DIAMETER)	UNIT	94
20200100	EARTH EXCAVATION	CU. YD.	882
25000900	SEEDING, CLASS 1, SPECIAL	ACRE	0.176
28000400	PERIMETER EROSION BARRIER	FOOT	567
28100109	STONE RIPRAP, CLASS A5	SQ. YD.	123
28200100	FILTER FABRIC FOR USE WITH RIPRAP	SQ. YD.	123
35101400	AGGREGATE BASE COURSE, TYPE B	TON	644
40200800	AGGREGATE SURFACE COURSE, TYPE B	TON	225
40500100	BITUMINOUS MATERIALS (PRIME COAT)	GALLON	452
40500300	BITUMINOUS MIXTURE COMPLETE	TON	107
50300225	CONCRETE STRUCTURES	CU. YD.	73.8
50800205	REINFORCEMENT BARS, EPOXY COATED	POUND	10450
51204900	STEEL SHEET PILING	SQ. FT.	220
63400305	GUARD POST, SPECIAL	EACH	2
72000100	SIGN PANEL, TYPE 1	SQ. FT.	16.51
72900100	METAL POST, TYPE A	FOOT	64
81012600	CONDUIT IN TRENCH, 2" DIA. PVC	FOOT	168
81400100	HANDHOLE	EACH	1
A2001714	TREE ACER SACCHARUM (SUGAR MAPLE), 1 3/4" CALIPER, BALLED & BURLAPPED	EACH	8
A2007114	TREE QUERCUS RUBRA (RED OAK) 1 3/4" CALLIPER, BALLED & BURLAPPED	EACH	8
B2005064	TREE MALUS SNOWDRIFT (SNOWDRIFT CRAB APPLE) 5' HEIGHT CLUMB FORM, BALLED & BURLAPPED	EACH	8
X0322973	REMOVE EXISTING SEA WALL	FOOT	81
X0322923	SEGMENTAL CONCRETE BLOCK WALL	SQ. FT.	918
XX001244	RETAINING WALL	FOOT	43
Z0002600	BAR SPLICERS	EACH	47
XX005803	BRICK SURFACE COURSE	SQ. YD.	272
XX005804	FORM LINER TEXTURED SURFACE	SQ. YD.	15.4
XX005805	LIGHT POLE FOUNDATION, 20" DIAMETER	EACH	3

- THE FINAL TOP 100 MM (FOUR INCHES) OF SOIL IN ANY AREA DISTURBED BY THE CONTRACTOR MUST BE A COHESIVE SOIL CAPABLE OF SUPPORTING VEGETATION.
- WHEN MULCH WITH EMULSIFIED ASPHALT IS APPLIED, IT WILL BE THE CONTRACTOR'S RESPONSIBILITY TO COVER OR PROTECT ALL TRAFFIC SIGNS, GUARDRAILS AND CURBS. ANY SIGNS, GUARDRAIL OR CURBS WHICH BECOME COVERED WITH ASPHALTIC MATERIAL SHALL BE CLEANED BY THE CONTRACTOR AT HIS OWN EXPENSE.
- A NATIONWIDE 404 PERMIT HAS BEEN ISSUED FOR THIS PROJECT AND THE CONDITIONS OF THAT PERMIT MUST BE ADHERED TO.
- ALL FRAMES AND GRATES OF DRAINAGE STRUCTURES TO BE REMOVED OR FILLED SHALL BE CAREFULLY SALVAGED AND SHALL REMAIN THE PROPERTY OF THE DIXON PARK DISTRICT.
- THE COST OF MAKING SEWER CONNECTIONS TO EXISTING DRAINAGE STRUCTURES SHALL BE INCLUDED IN THE VARIOUS CONTRACT UNIT PRICES FOR STORM SEWER.
- THE NEW MANHOLE LIDS ON THIS PROJECT SHALL HAVE THE WORD "STORM", "SANITARY", OR "WATER" ON THE LID. THE WORD TO BE USED IS NOTED ON THE PLANS. IT WILL BE THE CONTRACTOR'S RESPONSIBILITY TO DETERMINE THE WORD TO BE USED ON OTHER LIDS NOT NOTED ON THE PLANS. NO ADDITIONAL COMPENSATION WILL BE ALLOWED FOR THIS WORK.
- ALL PROPOSED MANHOLES AND INLETS ON THIS PROJECT SHALL BE CAST IN PLACE OR PRECAST. THIS WORK WILL BE PAID FOR AT THE CONTRACT UNIT PRICE EACH FOR MANHOLE OR CONTRACT UNIT PRICE EACH FOR INLET SPECIAL- NO. 3 OF THE TYPE AND SIZE SPECIFIED. ONLY BICYCLE SAFE GRATES SHALL BE USED ON THIS PROJECT.
- THE CONTRACTOR SHALL DETERMINE FLOWLINES OF EXISTING SEWER LINES WHICH ARE SHOWN ON THE PLANS AS ESTIMATED OR UNKNOWN. THIS INFORMATION IS NECESSARY BEFORE ORDERING INLETS AND MANHOLES.
- WORK ON THIS PROJECT SHALL NOT INTERFERE WITH THE ANNUAL DIXON PETUNIA FESTIVAL HELD ALONG THE RIVERFRONT OR RECREATIONAL EVENTS PLANNED BY THE DIXON PARK DISTRICT. ALSO THE CITY OF DIXON WILL BE COMPLETING THE BIKE PATH UNDER THE PEORIA AVENUE BRIDGE IN THE YEAR 2005. WORK ON THIS PROJECT SHALL BE SCHEDULED TO KEEP INTERFERENCE BETWEEN THE RECREATION EVENTS, PROJECTS AND CIVIC EVENTS TO A MINIMUM. THE CONTRACTORS SHALL INFORM EACH OTHER, THE CITY OF DIXON, AND THE DIXON PARK DISTRICT OF PROGRESS OF THE PROJECTS AND GIVE FAIR WARNING WHEN A PROBLEM MIGHT BE ENCOUNTERED.
- THE CONTRACTOR SHALL BE RESPONSIBLE FOR PROTECTING UTILITY PROPERTY DURING CONSTRUCTION OPERATIONS AS OUTLINED IN ARTICLE 107.31 OF THE STANDARD SPECIFICATIONS. A MINIMUM OF 48 HOURS ADVANCE NOTICE IS REQUIRED FOR NON-EMERGENCY WORK. THE JULIE NUMBER IS 800-892-0123. THE FOLLOWING IS A LIST OF THE JULIE MEMBERS AND THE STATUS OF THEIR FACILITIES LOCATED WITHIN OR ADJACENT TO THE PROJECT CONSTRUCTION LIMITS.

UTILITY NAME	TYPE	LOCATION
NICOR GAS CO.	GAS	THROUGHOUT PROJECT
COMMONWEALTH EDISON CO.	ELECTRIC	THROUGHOUT PROJECT
GALLATIN RIVER	TELEPHONE	THROUGHOUT PROJECT
NORLIGHT TELECOMM.	TELEPHONE	ALONG RIVER STREET
INSIGHT CABLE	CABLE	
DIXON SANITATION DEPT.	SEWER	THROUGHOUT PROJECT
DIXON WATER DEPT.	WATER	THROUGHOUT PROJECT

- THE INFORMATION ABOVE IS PROVIDED FOR THE CONVENIENCE OF THE BIDDER AND REFLECTS THE BEST INFORMATION AVAILABLE AT THE TIME OF PLAN SUBMITTAL. THIS INFORMATION IS NOT INTENDED TO INDICATE THAT THESE WILL BE THE ONLY UTILITY CONFLICTS THROUGHOUT THE PROJECT. THE APPLICABLE PROVISIONS OF ARTICLES 105.07, 107.20, 107.31 AND 108.02 OF THE STANDARD SPECIFICATIONS SHALL APPLY. CONTACT PERSONS, PHONE NUMBERS, AND ADDRESSES WILL BE SUPPLIED AFTER THE AWARD OF THE CONTRACT. ESTIMATED UTILITY RELOCATION DATES OR WORKING DAYS SHOULD BE PART OF THE PROGRESS SCHEDULE SUBMITTED BY THE CONTRACTOR. IF ANY UTILITY ADJUSTMENTS OR RELOCATIONS HAVE NOT BEEN COMPLETED PER THE ABOVE COMMENTS, THE CONTRACTOR SHOULD NOTIFY THE ENGINEER IN WRITING.
- ALL FULL DEPTH SAW CUT PERFORMED SHALL BE INCIDENTAL TO THE CONTRACT.
 - THE BRICK SURFACE COURSE SHALL MATCH THE COLOR AND PATTERN THAT IS ON THE ADJACENT BRICK EMBOSSED ASPHALT PATH NEAR STATION 111+50.
 - THE LOCATION OF THE TREE REPLACEMENT PLANTINGS SHALL BE DETERMINED BY THE DIXON PARK DISTRICT AND SHALL BE PLANTED IN THE FALL.
 - AGGREGATE SURFACE COURSE, TYPE B IS PROVIDED IN THE PLAN QUANTITIES AND SHALL BE USED TO CONSTRUCT THE TEMPORARY RAMPS UNDER THE PEORIA AVENUE BRIDGE TO TRANSITION TO EXISTING SURFACE UNTIL NEW PEORIA AVENUE BRIDGE IS CONSTRUCTED.

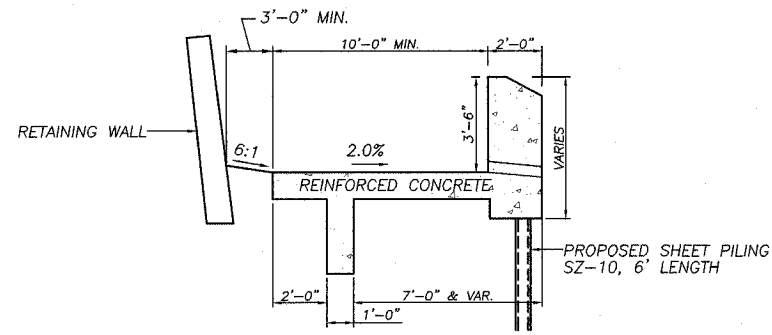
© WENDLER ENGINEERING SERVICES, INC. 2004

 <p>WENDLER ENGINEERING SERVICES, INC. Structural & Civil Engineers—Land Surveying—Environmental Services Illinois Professional Design Firm No. 184-000848</p>	<p>1968 - 2004 AFTER 36 YEARS. WE'RE STILL "Turning Ideas... ...Into Reality!"</p>	<p>698 TIMBER CREEK ROAD - P.O. BOX 486 - DIXON, IL 61021 - 815-288-2261 28 E. MARION - SUITE 3 - PRINCETON, IL 61356 - 815-879-4731 1770 WEST STATE ST. - SYCAMORE, IL 60178 - 815-895-5008 804 FREEPORT RD. - STERLING, IL 61081 - (815) 626-4428 E-MAIL: info@wendler.nu</p>	<p>0 SCALE: 1"=25'</p>	<p>REVISION</p> <table border="1"> <tr> <th>NO.</th> <th>DATE</th> <th>BY</th> <th>DESCRIPTION</th> </tr> <tr> <td> </td> <td> </td> <td> </td> <td> </td> </tr> </table>	NO.	DATE	BY	DESCRIPTION					<p>SURVEYED BY</p> <table border="1"> <tr> <td> </td> <td> </td> </tr> </table>			<p>JOB NO.</p> <table border="1"> <tr> <td>99022</td> <td>BDS</td> </tr> </table>	99022	BDS	<p>DRAWN BY</p> <table border="1"> <tr> <td> </td> <td> </td> </tr> </table>			<p>DESIGNED BY</p> <table border="1"> <tr> <td> </td> <td> </td> </tr> </table>		
				NO.	DATE	BY	DESCRIPTION																	
99022	BDS																							
<p>BOOK NO.</p> <table border="1"> <tr> <td> </td> <td> </td> </tr> </table>						<p>DRAWING NAME</p> <table border="1"> <tr> <td>NOTES</td> <td>2/3/2004</td> </tr> </table>		NOTES	2/3/2004	<p>DRAWING DATE</p> <table border="1"> <tr> <td> </td> <td> </td> </tr> </table>														
NOTES	2/3/2004																							
<p>TITLE</p> <p>SUMMARY OF QUANTITIES & GENERAL NOTES</p>																								
<p>CLIENT</p> <p>DIXON PARK DISTRICT</p>																								

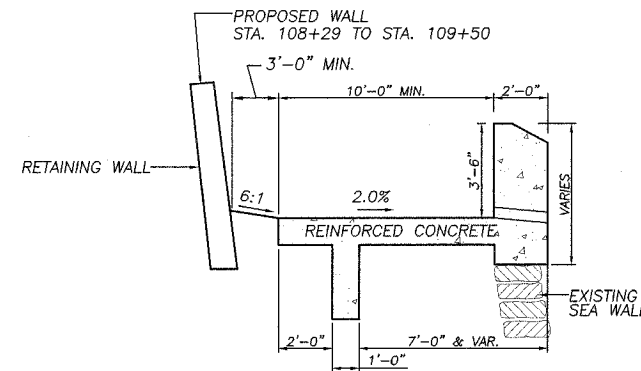
FAS ROUTE NO.	SEC	COUNTY	TOTAL SHEETS	SHEET NO
-	*	LEE	20	3

ILLINOIS PROJECT TE-D2(115)

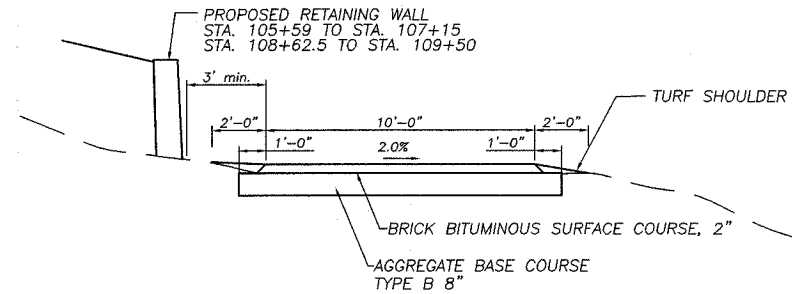
* 01-P4000-00-BT



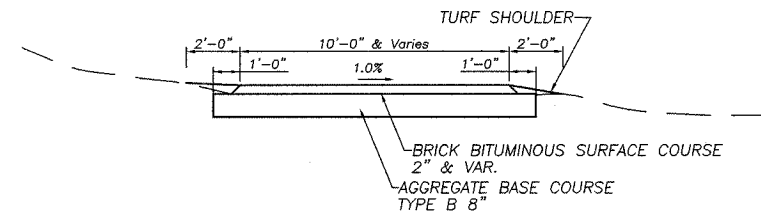
TYPICAL BIKE PATH SECTION
 STA. 106+88.8 TO STA. 107+15.1
 OMISSION STA. 107+15.1 TO STA. 108+62.5 (BY OTHERS)



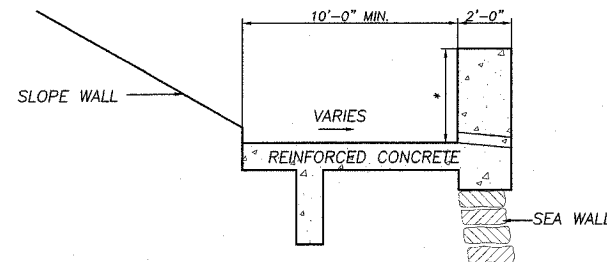
TYPICAL BIKE PATH SECTION
 STA. 108+62.5 TO STA. 109+16.5



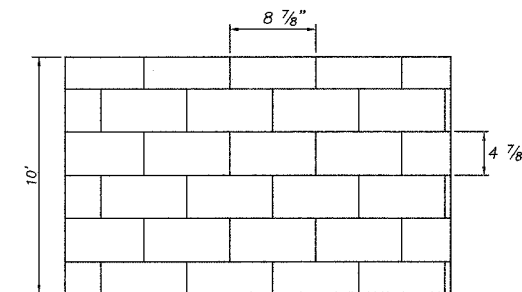
TYPICAL BIKE PATH SECTION
 STA. 100+00 TO STA. 106+88.8
 STA. 109+16.5 TO STA. 111+61



EXISTING BIKE PATH SECTION
 STA. 111+61 TO STA. 114+40



TYPICAL BIKE PATH SECTION
 EXISTING UNDER GALENA AVE.
 AND FUTURE UNDER PEORIA AVE. (STA. 107+31.5 TO STA. 108+27.5)
 * 3'-6" UNDER PEORIA AVE. BRIDGE
 * 4'-6" UNDER GALENA AVE. BRIDGE



BRICK SURFACE COARSE PRINT DETAIL
 "OFFSET BRICK"

© WENDLER ENGINEERING SERVICES, INC. 2004

WENDLER ENGINEERING SERVICES, INC.

Structural & Civil Engineers—Land Surveying—Environmental Services
 Illinois Professional Design Firm No. 184-000848

1968 - 2004
 AFTER
36
 YEARS,
 WE'RE STILL
 "Turning Ideas
 into Reality!"

698 TIMBER CREEK ROAD - P.O. BOX 486 - DIXON, IL 61021 - 815-288-2261
 28 E. MARION - SUITE 3 - PRINCETON, IL 61356 - 815-879-4731
 1770 WEST STATE ST. - SYCAMORE, IL 60178 - 815-895-5008
 804 FREEPORT RD. - STERLING, IL 61081 - (815) 626-4428
 E-MAIL: info@wendler.nu

0
 SCALE: 1"=15'

REVISION	DATE	SUPPLIED BY	JOB NO.	DRAWN BY	CHECKED BY
	04/30/04		99022	BEH	
				TYP. SECT.	2/3/2004
TITLE					
TYPICAL SECTIONS					
CLIENT					
DIXON PARK DISTRICT					

SCHEDULE OF QUANTITIES

FAS ROUTE NO.	SEC	COUNTY	TOTAL SHEETS	SHEET NO
-	*	LEE	20	4

ILLINOIS PROJECT TE-D2(115)

* 01-P4000-00-BT

20100110	TREE REMOVAL (6 TO 15 UNITS DIAMETER)	
LOCATION		UNITS
LT. STA. 109+34		14
	TOTAL	14
20100210	TREE REMOVAL (OVER 15 UNITS DIAMETER)	
LOCATION		UNITS
RT. STA. 109+71		30
RT. STA. 110+04		16
RT. STA. 110+04		16
RT. STA. 110+04		16
RT. STA. 110+04		16
	TOTAL	94
25000800	SEEDING, CLASS 1, SPECIAL	
LOCATION		ACRES
LT. STA. 100+00 - LT. STA. 107+15.1		0.0375
RT. STA. 100+00 - RT. STA. 107+15.1		0.0349
LT. STA. 108+62.5 - LT. STA. 111+60.7		0.0456
RT. STA. 108+62.5 - RT. STA. 111+60.7		0.0582
	TOTAL	0.1761
28000400	PERIMETER EROSION BARRIER	
LOCATION		FOOT
RT. STA. 105+00 - RT. STA. 106+00		99
LT. STA. 105+49 - LT. STA. 107+15		168
RT. STA. 109+22 - RT. STA. 110+67		150
LT. STA. 108+31 - LT. STA. 109+60		160
	TOTAL	587
28100109	STONE RIPRAP, CLASS A6	
LOCATION		SQ. YD.
RT. STA. 106+00 - RT. STA. 106+98		99
RT. STA. 108+35 - RT. STA. 108+78		24
	TOTAL	123
28200100	FILTER FABRIC FOR USE WITH RIPRAP	
LOCATION		SQ. YD.
RT. STA. 106+00 - RT. STA. 106+98		99
RT. STA. 108+35 - RT. STA. 108+78		24
	TOTAL	123

35101400	AGGREGATE BASE COURSE, TYPE B	
LOCATION		TON
STA. 100+00 - STA. 106+88.81		459
LT. STA. 103+38		22
STA. 109+16.5 - STA. 111+60.74		163
	TOTAL	644
40200800	AGGREGATE SURFACE COURSE, TYPE B	
LOCATION		TON
UNDER PEORIA AVE. BRIDGE		225
	TOTAL	225
40500100	BITUMINOUS MATERIALS (PRIME COAT)	
LOCATION		GALLON
STA. 100+00 - STA. 106+88.81		322
LT. STA. 103+38		16
STA. 109+16.5 - STA. 111+60.74		114
	TOTAL	452
40500300	BITUMINOUS MIXTURE COMPLETE	
LOCATION		TON
STA. 100+00 - STA. 106+88.81		106
LT. STA. 103+38		1
	TOTAL	107
51204900	STEEL SHEET PILING	
LOCATION		SQ. FT.
RT. STA. 106+91 - RT. STA. 107+15		220
	TOTAL	220
81012600	CONDUIT IN TRENCH, 2" DIA. PVC	
LOCATION		FOOT
LT. STA. 109+10 - LT. STA. 109+25		14
LT. STA. 109+25 - LT. STA. 110+00		76
LT. STA. 110+00 - LT. STA. 110+80		78
	TOTAL	168
81400100	HANDHOLE	
LOCATION		EACH
LT. STA. 109+10		1
	TOTAL	1
	LIGHT POLE FOUNDATION, 20" DIAMETER	
LOCATION		EACH
LT. STA. 109+25		1
LT. STA. 110+00		1
LT. STA. 110+80		1
	TOTAL	3
A2001714	TREE ACER SACCHARUM (SUGAR MAPLE) 1 3/4" CALIPER, BALLED & BURLAPPED	
LOCATION		EACH
JOBSITE		8
	TOTAL	8

A2007114	TREE QUERCUS RUBRA (RED OAK) 1 3/4" CALIPER, BALLED & BURLAPPED	
LOCATION		EACH
JOBSITE		8
	TOTAL	8
B2005064	TREE MALUS SNOWDRIFT (SNOWDRIFT CRAB APPLE) 5' HEIGHT, CLUMB FORM, BALLED & BURLAPPED	
LOCATION		EACH
JOBSITE		8
	TOTAL	8
	BRICK SURFACE COURSE	
LOCATION		S.Y.
STA. 109+16.5 - STA. 111+60.74		272
	TOTAL	272
X0322973	REMOVE EXISTING SEA WALL	
LOCATION		FOOT
RT. STA. 108+35 TO RT. STA. 109+16		81
	TOTAL	81
63400305	GUARD POST, SPECIAL	
LOCATION		EACH
STA. 100+05		2
	TOTAL	2

SIGN SCHEDULE					
LOCATION	METAL POST TYPE A	M.U.T.C.D. CODE			DISMOUNT YOUR BIKE
		R1-1 1.13 SQ FT	D11-1 3.0 SQ FT	M7-1 0.75 SQ FT	
STA. 100+00	2 @ 10, 1 @ 12	1	2	1	
STA. 110+00	2 @ 10		2		
RT. STA. 114+20	1 @ 12				1
	64 FEET	2.26 SQ FT	12.0 SQ FT	0.75 SQ FT	1.5 SQ FT
					16.51 SQ FT

EARTH WORK SCHEDULE		
LOCATION	EARTH EXCAVATION	EMBANKMENT
	CU. YD.	CU. YD.
STA. 100+00 - STA. 106+88	376	44
STA. 108+62 - STA. 111+51	506	17
	TOTAL	61

© WENDLER ENGINEERING SERVICES, INC. 2004

WENDLER ENGINEERING SERVICES, INC.
Structural & Civil Engineers—Land Surveying—Environmental Services
Illinois Professional Design Firm No. 184-000848

1968 - 2004
AFTER
36
YEARS,
WE'RE STILL
Turning Ideas
Into Reality!

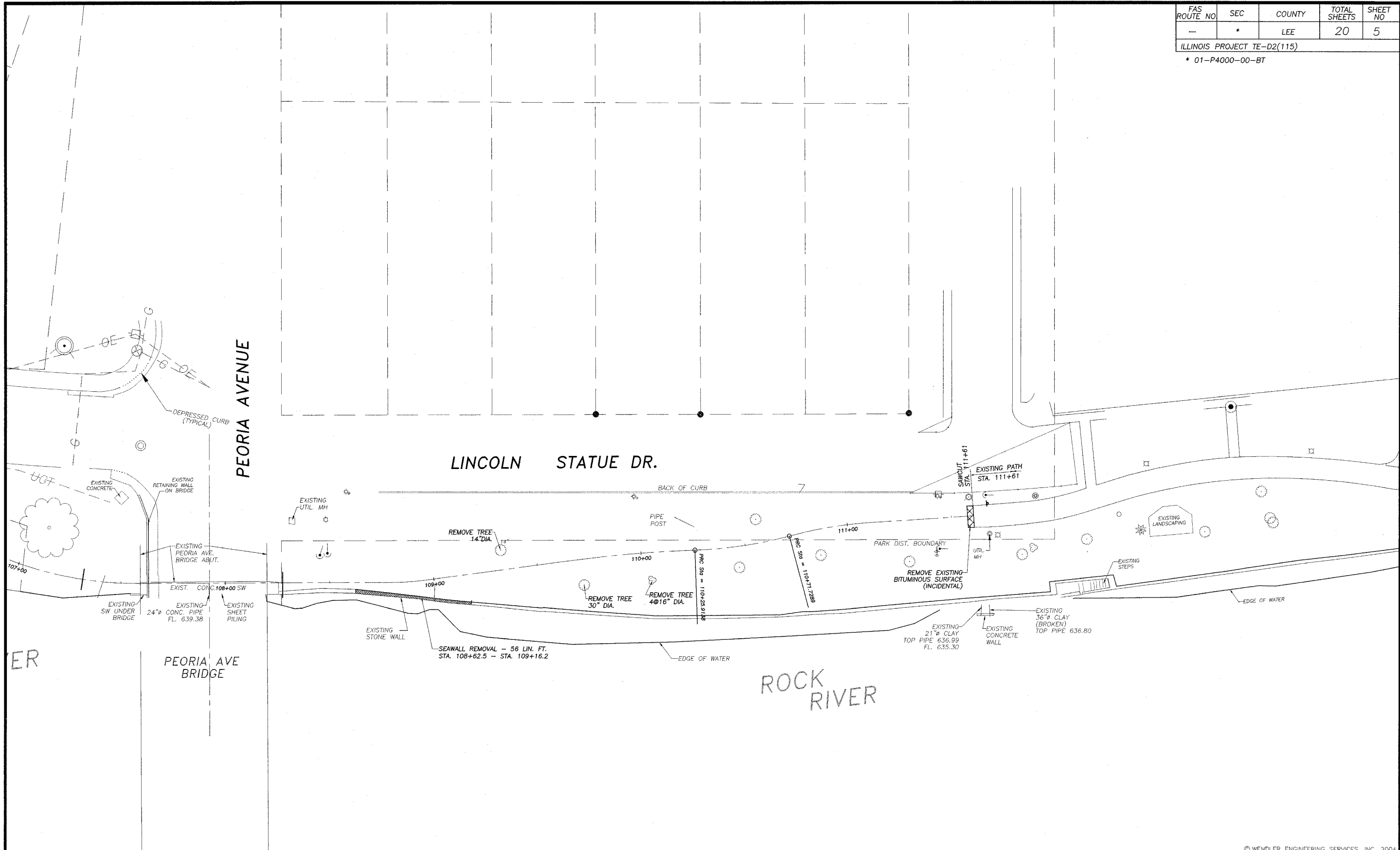
698 TIMBER CREEK ROAD - P.O. BOX 486 - DIXON, IL 61021 - 815-288-2261
28 E. MARION - SUITE 3 - PRINCETON, IL 61356 - 815-879-4731
1770 WEST STATE ST. - SYCAMORE, IL 60178 - 815-895-5008
804 FREEPORT RD. - STERLING, IL 61081 - (815) 626-4428
E-MAIL: info@wendler.nu

SCALE: 1"=10'

REVISION	DATE	SUPERVISED BY	JOB NO.	DRAWN BY	DESIGNED BY
			99022	BDS	
			SCHD	2/3/2004	
TITLE: SCHEDULE OF QUANTITIES					
CLIENT: DIXON PARK DISTRICT					

FAS ROUTE NO.	SEC	COUNTY	TOTAL SHEETS	SHEET NO.
-	*	LEE	20	5

ILLINOIS PROJECT TE-D2(115)
* 01-P4000-00-BT

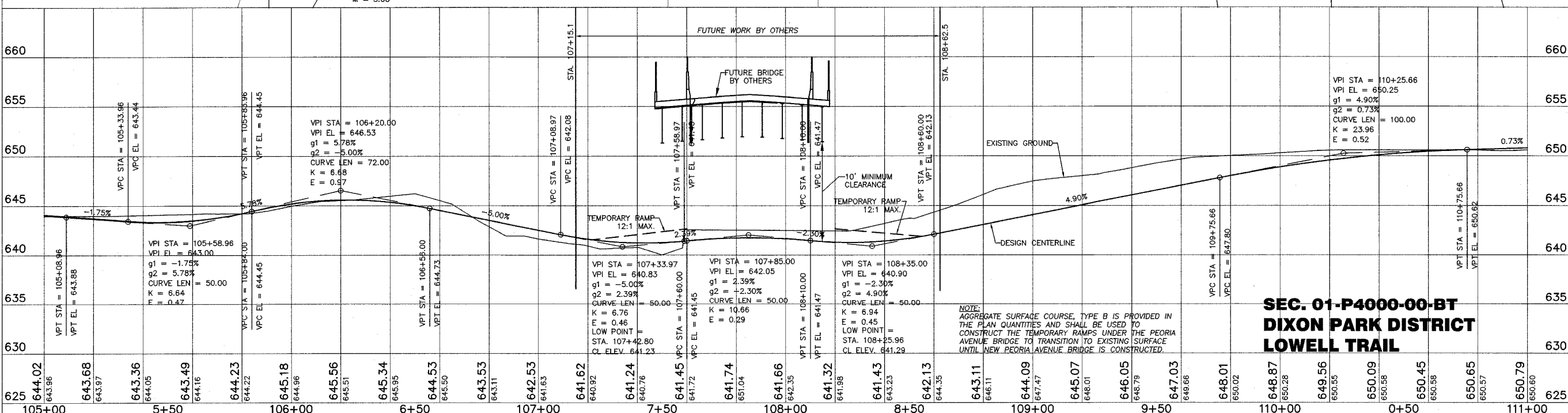
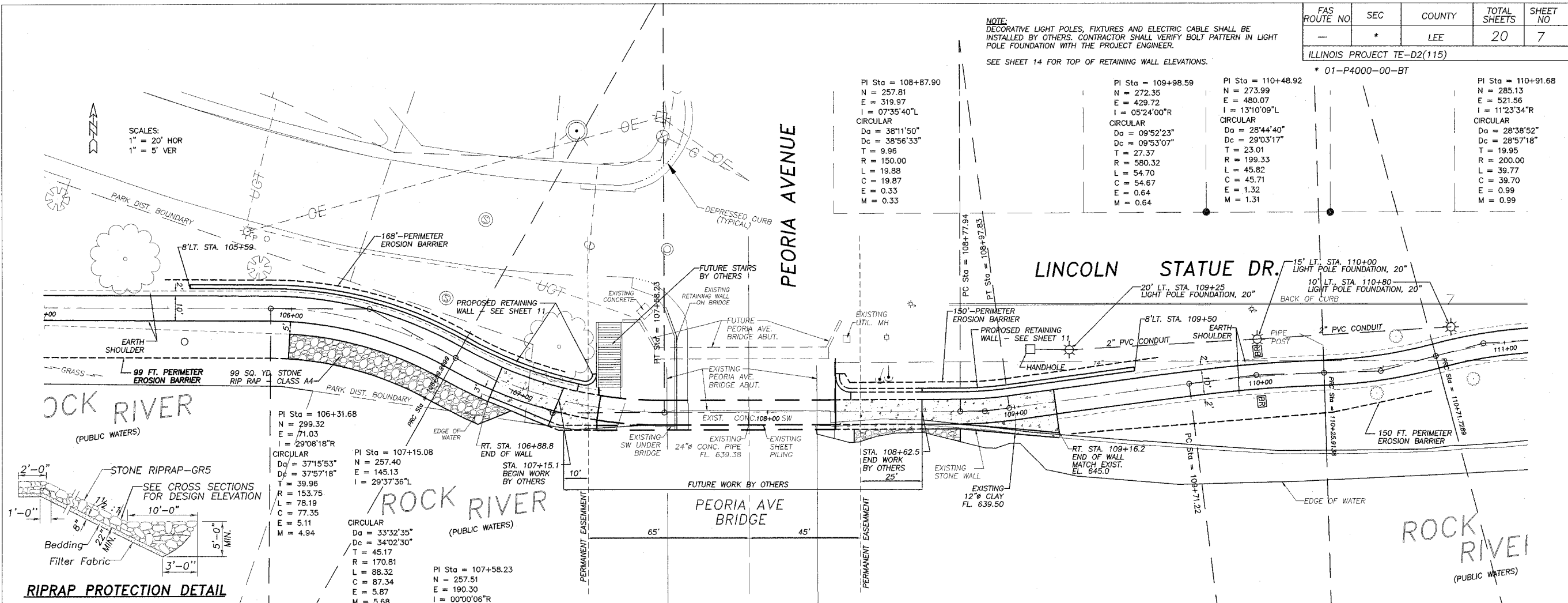


© WENDLER ENGINEERING SERVICES, INC. 2004

<p>WENDLER ENGINEERING SERVICES, INC. Structural & Civil Engineers—Land Surveying—Environmental Services Illinois Professional Design Firm No. 184-000848</p>	<p>1968 - 2004 AFTER 36 YEARS WE'RE STILL "Turning Ideas... ...Into Reality!"</p>	<p>698 TIMBER CREEK ROAD - P.O. BOX 486 - DIXON, IL 61021 - 815-288-2261 28 E. MARION - SUITE 3 - PRINCETON, IL 61356 - 815-879-4731 1770 WEST STATE ST. - SYCAMORE, IL 60178 - 815-895-5008 804 FREEPORT RD. - STERLING, IL 61081 - (815) 626-4428 E-MAIL: info@wendler.nu</p>		<table border="1"> <tr> <th>REVISION</th> <th>DATE</th> <th>SURVEYED BY</th> <th>JOB NO.</th> <th>DRAWN BY</th> <th>DESIGNED BY</th> </tr> <tr> <td> </td> <td> </td> <td> </td> <td>99022</td> <td>BEH, BDS</td> <td> </td> </tr> </table>	REVISION	DATE	SURVEYED BY	JOB NO.	DRAWN BY	DESIGNED BY				99022	BEH, BDS	
				REVISION	DATE	SURVEYED BY	JOB NO.	DRAWN BY	DESIGNED BY							
			99022	BEH, BDS												
<p>SEC 01-P4000-00-BT DEMOLITION PLAN DIXON PARK DISTRICT</p>			<table border="1"> <tr> <td>BOOK NO.</td> <td>DRAWING NAME</td> <td>DRAWING DATE</td> </tr> <tr> <td> </td> <td>YMCA</td> <td>2/3/2004</td> </tr> </table>	BOOK NO.	DRAWING NAME	DRAWING DATE		YMCA	2/3/2004							
BOOK NO.	DRAWING NAME	DRAWING DATE														
	YMCA	2/3/2004														

FAS ROUTE NO	SEC	COUNTY	TOTAL SHEETS	SHEET NO
-	*	LEE	20	7

ILLINOIS PROJECT TE-D2(115)



685 TIMBER CREEK ROAD - P.O. BOX 486 - DIXON, IL 61021 - 815-289-2261
28 E. MARION - SUITE 3 - PRINCETON, IL 61356 - 815-879-4731
1778 WEST STATE ST. - SYCAMORE, IL 60778 - 815-895-5088
804 FREEMONT RD. - STERLING, IL 61081 - (815) 626-4428
E-MAIL: info@wendler.com

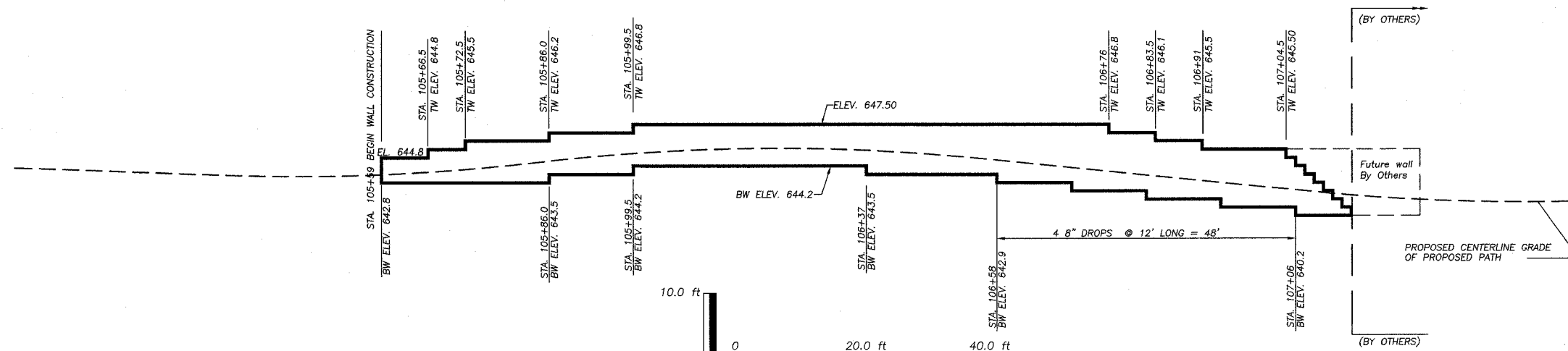
WENDLER ENGINEERING SERVICES, INC.
Structural & Civil Engineers—Land Surveying—Environmental Services
Illinois Professional Design Firm No. 184-000848

WME
1968 - 2003
35th Anniversary
Turning Ideas into Reality

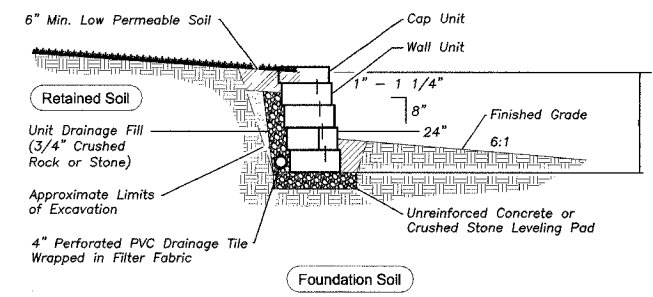
DATE: 11/20/2003

FAS ROUTE NO	SEC	COUNTY	TOTAL SHEETS	SHEET NO
-	*	LEE	20	9

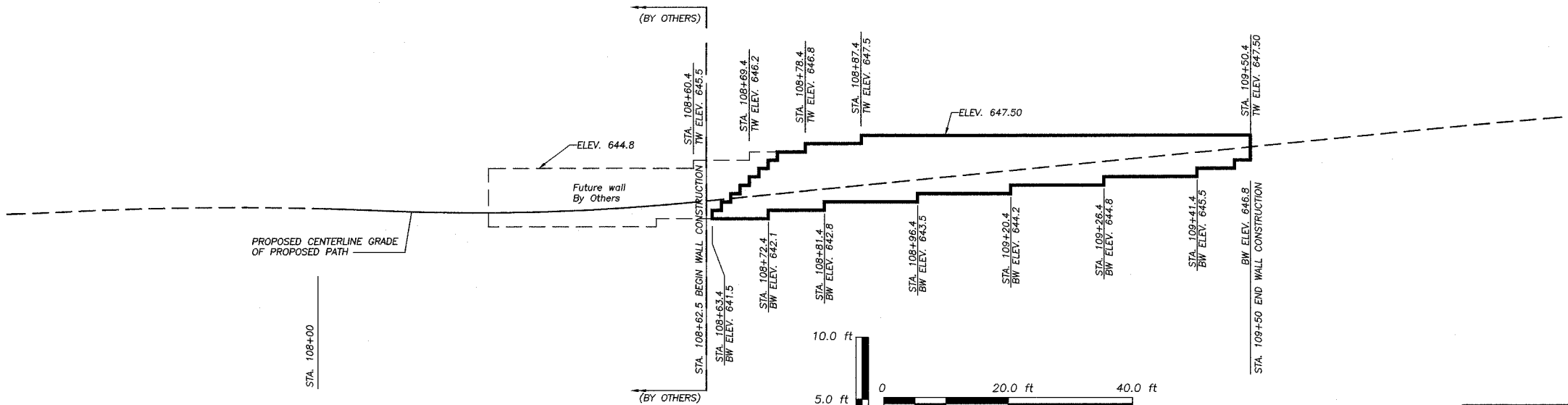
ILLINOIS PROJECT TE-D2(115)
* 01-P4000-00-BT



SEGMENTAL CONCRETE RETAINING WALL DETAIL
STA. 105+59 TO STA. 107+15.1
WALL AREA = 577 SQ. FT.



Typical Segmental Wall Section



SEGMENTAL CONCRETE RETAINING WALL DETAIL
STA. 108+63.4 TO STA. 109+50.4
WALL AREA = 341 SQ. FT.

BILL OF MATERIAL

ITEM	UNIT	QUANTITY
Segmental Concrete Block Wall	SQ. FT.	918
Retaining Wall	FT.	43

© WENDLER ENGINEERING SERVICES, INC. 2004

WENDLER ENGINEERING SERVICES, INC.
Structural & Civil Engineers—Land Surveying—Environmental Services
Illinois Professional Design Firm No. 184-000848

1968 - 2004
AFTER
36
YEARS
WE'RE STILL
Turning Ideas
Into Reality!!!

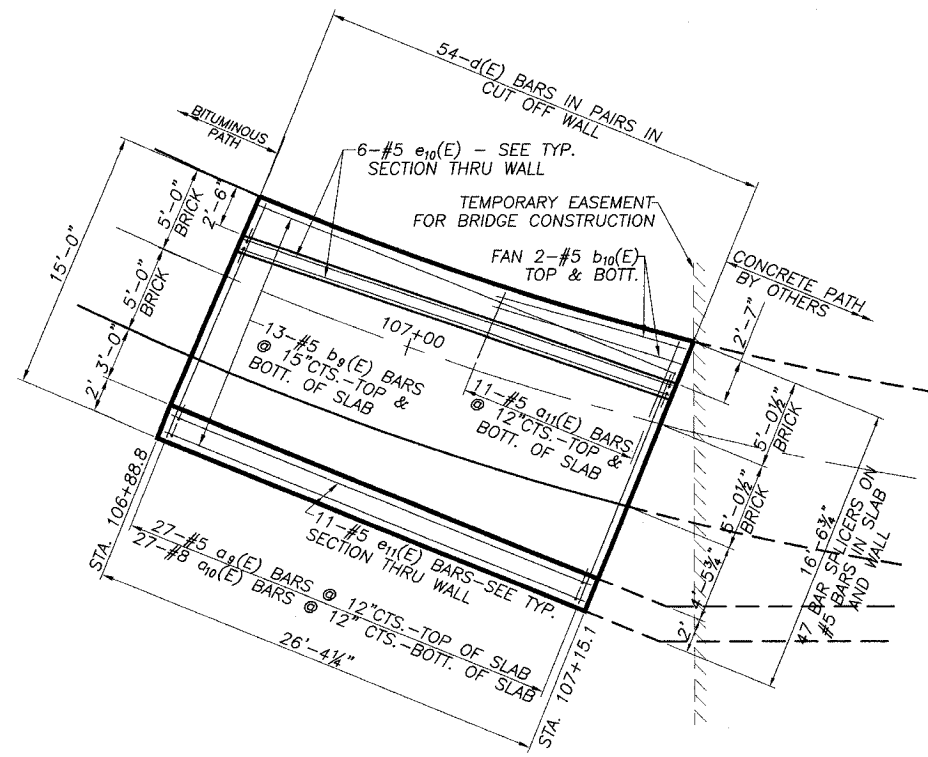
698 TIMBER CREEK ROAD - P.O. BOX 486 - DIXON, IL 61021 - 815-288-2261
28 E. MARION - SUITE 3 - PRINCETON, IL 61356 - 815-879-4731
1770 WEST STATE ST. - SYCAMORE, IL 60178 - 815-895-5008
804 FREEPORT RD. - STERLING, IL 61081 - (815) 626-4428
E-MAIL: info@wendler.nu

REVISION	DATE	SURVEYED BY	JOB NO.	DRAWN BY	DESIGNED BY
			99022	BEH	
		BOOK NO.	DRAWING NAME	DRAWING DATE	
			WALLELEV	2/3/2004	
TITLE					
RETAINING WALL DETAILS					
CLIENT					
DIXON PARK DISTRICT					

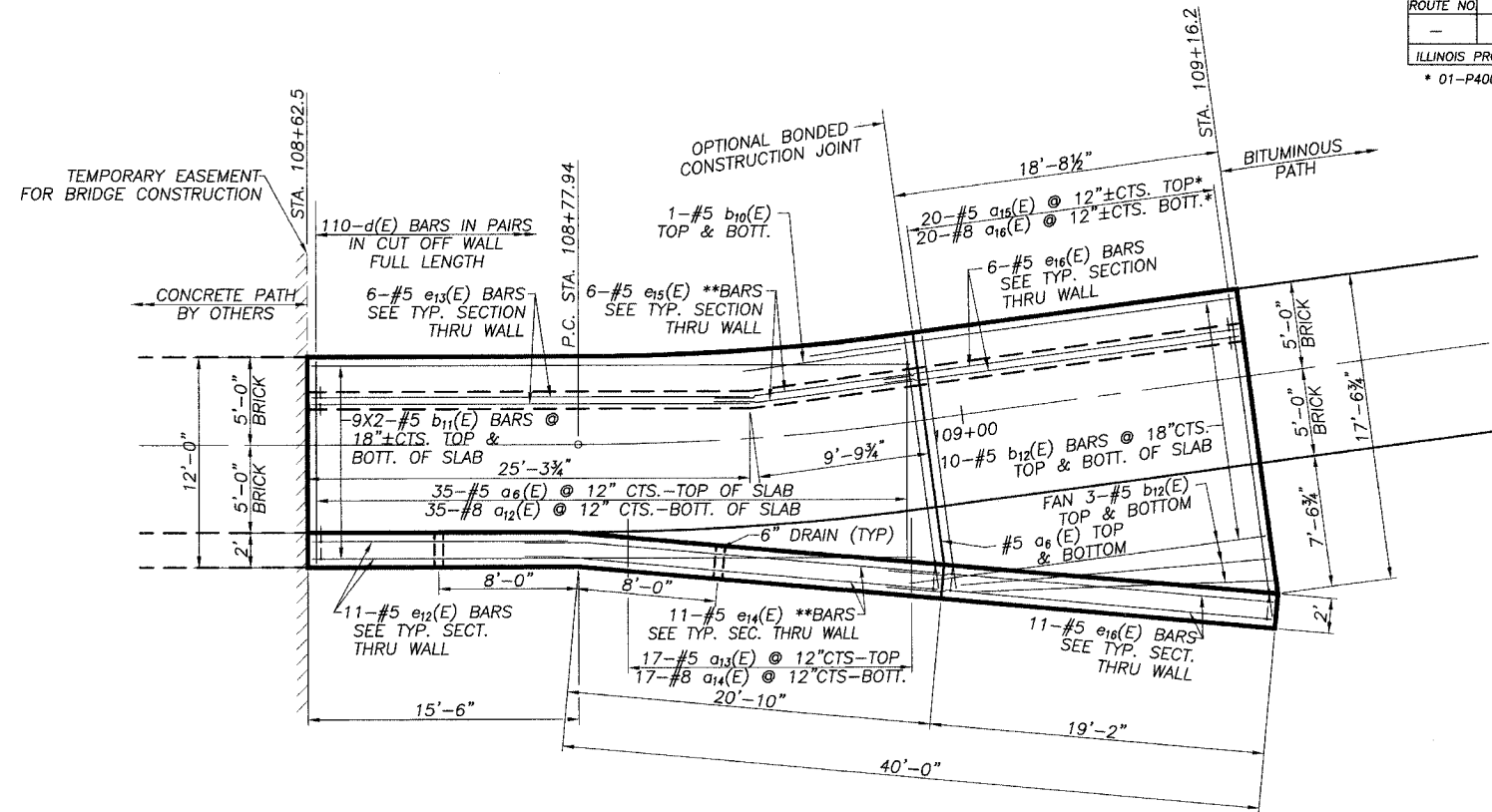
SCALE: 1"=10'

FAS ROUTE NO	SEC	COUNTY	TOTAL SHEETS	SHEET NO
-	*	LEE	20	10

ILLINOIS PROJECT TE-D2(115)
* 01-P4000-00-BT

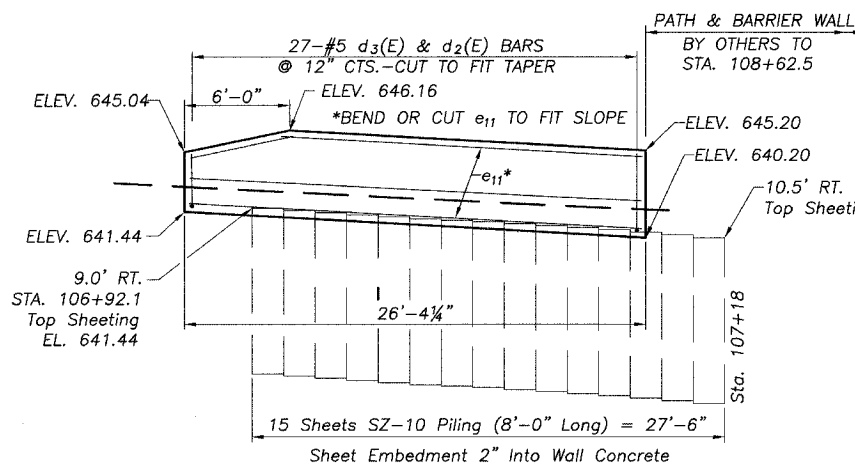


PLAN - WEST OF PEORIA AVE.



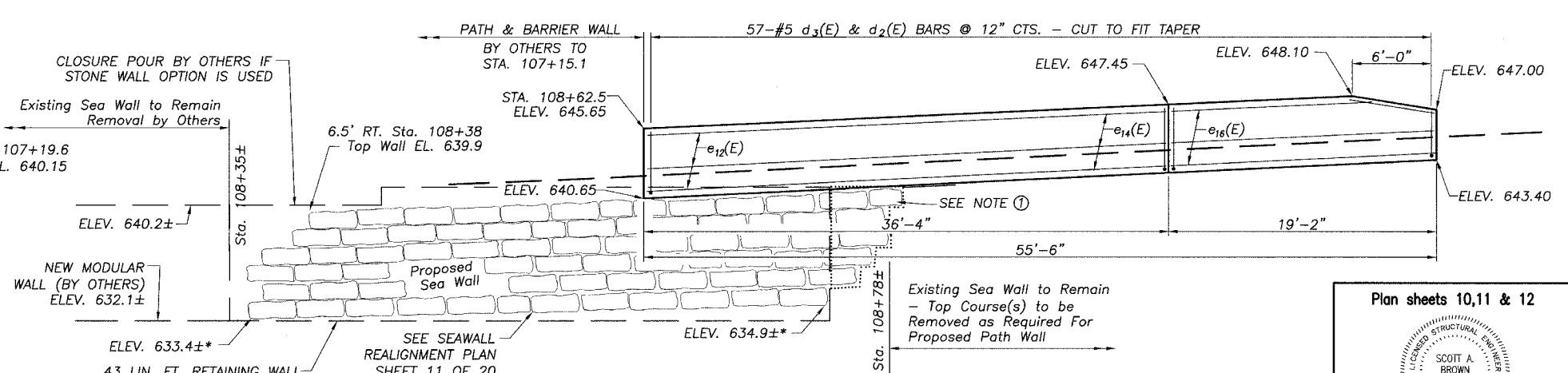
PLAN - EAST OF PEORIA AVE.

*CUT BARS TO FIT TAPER
**BEND 2'-5" OF BAR END TO FIT TAPER



ELEVATION - WEST OF PEORIA AVE.

ALL DIMENSIONS ARE ALONG OUTSIDE FACE OF WALL



ELEVATION - EAST OF PEORIA AVE.

ALL DIMENSIONS ARE ALONG OUTSIDE FACE OF WALL
* Bottom of proposed sea wall elevations may be adjusted in the field to align new wall horizontal course grout lines to those on the existing wall. Expected adjustment to be less than 9" vertically downward.

- ① For Modular Option: Concrete Closure Pour Between Proposed Modular Wall and Existing Stone Sea Wall with Class SI Concrete. 24" Thickness. Drill and Attach 3/4" Dia. Anchor Bolts into Each Side at 18"± Cts. Full Height. Backfill with Controlled Low Strength Material (4' Horizontal Along Wall From Joint with Existing Wall 2' From Back Face of Existing Wall). (Cost Incidental to Retaining Wall)

Plan sheets 10,11 & 12

Scott A. Brown 3/16/2005
DATE

SCOTT A. BROWN
DIXON, ILLINOIS
ILLINOIS LICENSED STRUCTURAL
ENGINEER NO. 081-005981
EXPIRES 11-30-2006

© WENDLER ENGINEERING SERVICES, INC. 2004

WENDLER ENGINEERING SERVICES, INC.
Structural & Civil Engineers—Land Surveying—Environmental Services
Illinois Professional Design Firm No. 184-000848

1968 - 2004
AFTER
36
YEARS
WE'RE STILL
"Turning Ideas...
...Into Reality!"

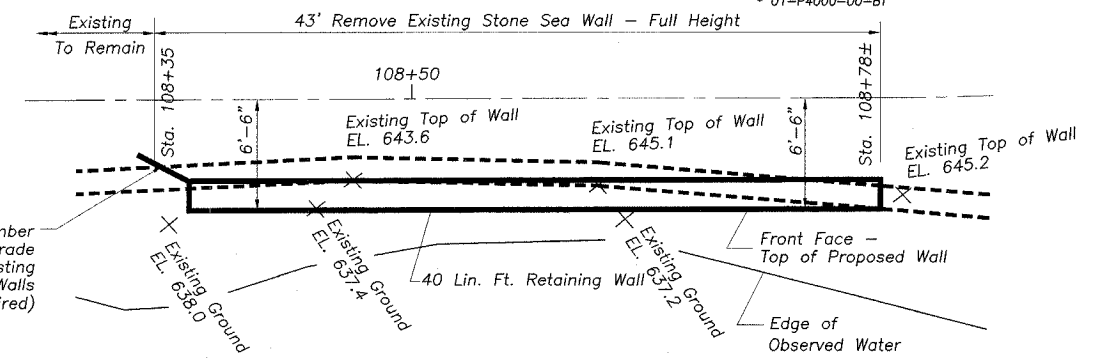
698 TIMBER CREEK ROAD - P.O. BOX 486 - DIXON, IL 61021 - 815-288-2261
28 E. MARION - SUITE 3 - PRINCETON, IL 61356 - 815-879-4731
1770 WEST STATE ST. - SYCAMORE, IL 60178 - 815-895-5008
804 FREEPORT RD. - STERLING, IL 61081 - (815) 626-4428
E-MAIL: info@wendler.nu

REVISION	DATE	SURVEYED BY	JOB NO.	DRAWN BY	DESIGNED BY
			99022	BEH	
			DRAWING NAME	DRAWING DATE	
			RET-WALL-PEORIA	3/16/2005	
			TITLE		
			STA. 106+84.9 TO STA. 109+16.2		
			TITLE		
			RETAINING WALL DETAILS		
			DIXON PARK DISTRICT		

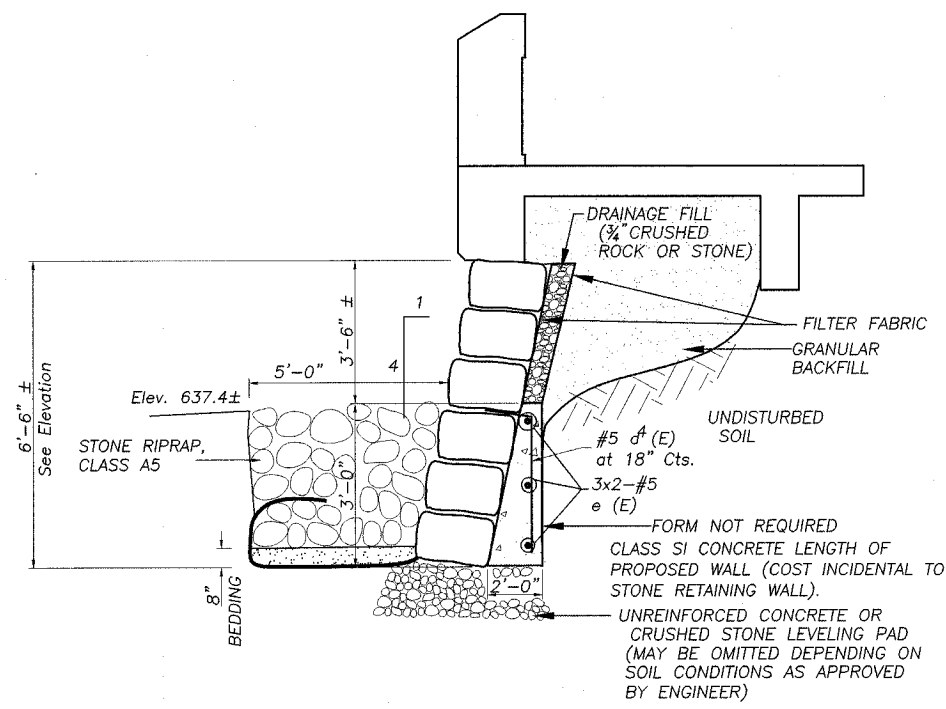
SCALE: 1"=NTS

FAS ROUTE NO.	SEC	COUNTY	TOTAL SHEETS	SHEET NO.
-	*	LEE	20	11

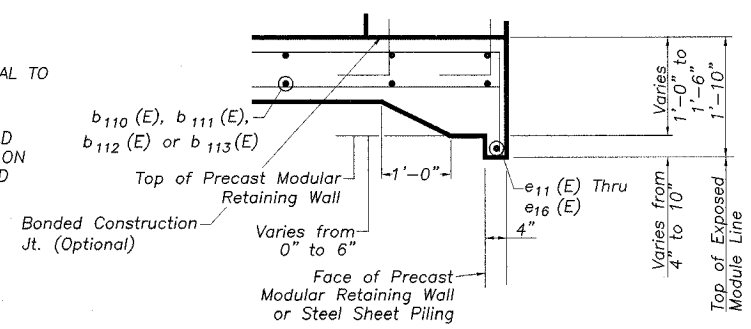
ILLINOIS PROJECT TE-D2(115)
* 01-P4000-00-BT



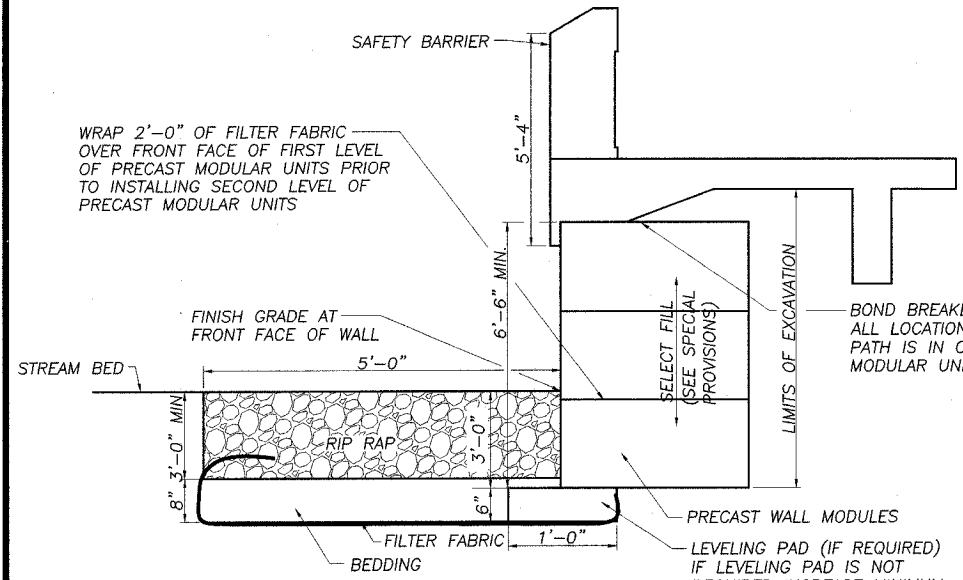
SEA WALL REALIGNMENT PLAN
Rt. Sta. 108+35 to Rt. Sta. 108+78±



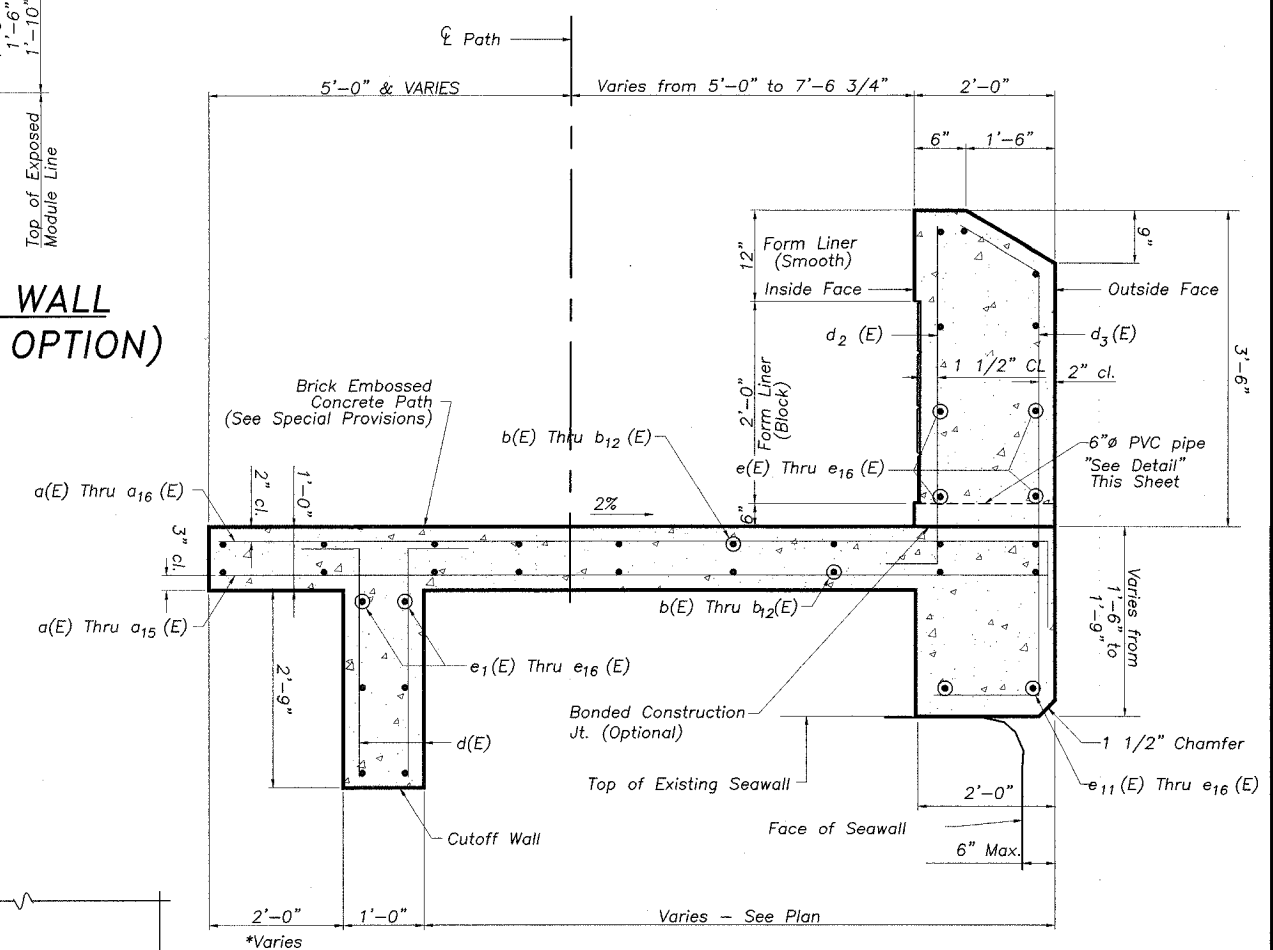
TYPICAL SECTION THRU PROPOSED RETAINING WALL (STONE WALL OPTION)
Rt. Sta. 108+38 to Rt. Sta. 108+78±
Looking West



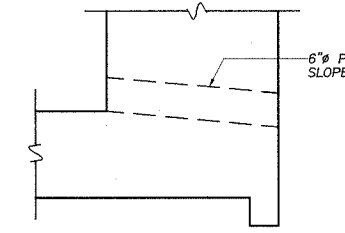
TYPICAL SECTION THRU WALL (PRECAST MODULAR WALL OPTION)
Sta. 106+88.8 to Sta. 107+15.1
Sta. 108+62.5 to Sta. 109+16.2
Looking East



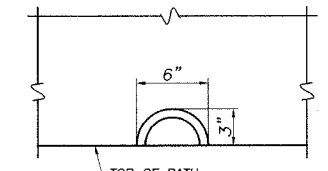
TYPICAL SECTION THRU PROPOSED RETAINING WALL (PRECAST MODULAR OPTION)
Rt. Sta. 108+38 to Rt. Sta. 108+78±
Looking West



TYPICAL SECTION THRU WALL (STONE WALL OPTION)
Sta. 106+88.8 to Sta. 107+15.1
Sta. 108+62.5 to Sta. 109+16.2
Looking East



DRAIN DETAIL



DRAIN ELEVATION

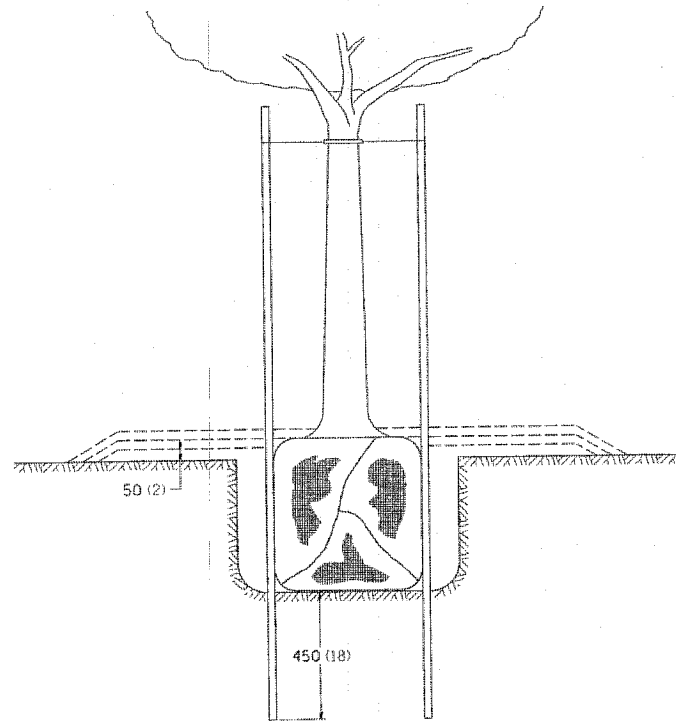
<p>WENDLER ENGINEERING SERVICES, INC. Structural & Civil Engineers—Land Surveying—Environmental Services Illinois Professional Design Firm No. 184-000848</p>	<p>1968 - 2004 AFTER 36 YEARS WE'RE STILL Turning Ideas ...into Reality!!!</p>	<p>698 TIMBER CREEK ROAD - P.O. BOX 486 - DIXON, IL 61021 - 815-288-2261 28 E. MARION - SUITE 3 - PRINCETON, IL 61356 - 815-879-4731 1770 WEST STATE ST. - SYCAMORE, IL 60178 - 815-895-5008 804 FREEPORT RD. - STERLING, IL 61081 - (815) 626-4428 E-MAIL: info@wendler.nu</p>	<p>SCALE: 1"=10'</p>	<p>REVISION DATE</p>	<p>SUPERVISED BY</p>	<p>DESIGNED BY</p>
			<p>BOOK NO.</p>	<p>DRAWING DATE</p>	<p>JOB NO. 99022</p>	<p>DRAWN BY BEH</p>

TYPICAL SECTION THRU WALL RETAINING WALL DETAILS
DIXON PARK DISTRICT

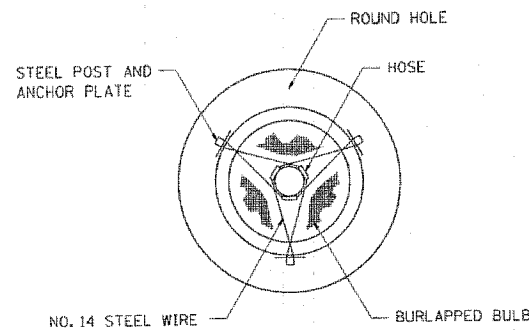
FAS ROUTE NO.	SEC	COUNTY	TOTAL SHEETS	SHEET NO
-	*	LEE	20	14

ILLINOIS, PROJECT TE-D2(115)
 * 01-P4000-00-BT

DETAILS OF PLANTING AND BRACING TREES

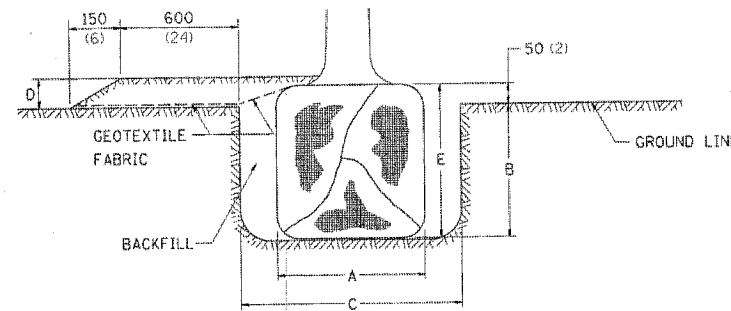


TREES SMALLER THAN 115 (4 1/2) IN DIAMETER

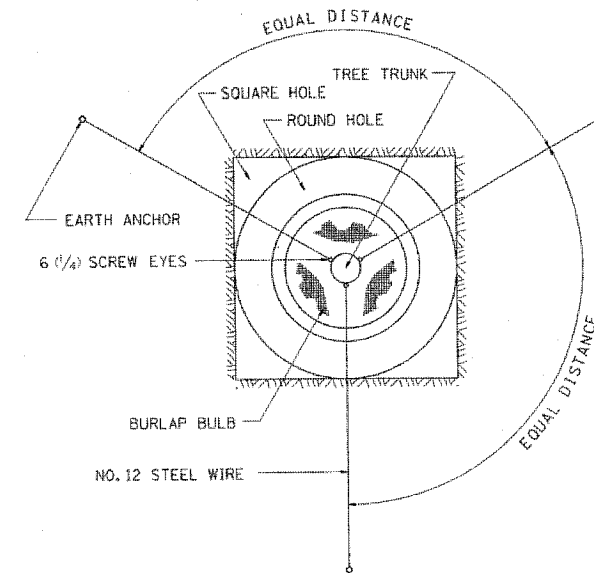


SMALL	A	B	C	D	E	F
TREE SIZE	DIAMETER OF BALL OR ROOT SYS.	DEPTH OF HOLE EXCAVATION	WIDTH OF HOLE EXCAVATION	THICKNESS OF MULCH COVER	DEPTH OF BALL OR ROOT SYS.	VOLUME OF MULCH COVER m ³ (CU. YDS.)
1.5-1.8m (5'-6")	400 (16)	250 (10)	750 (30)	100 (4)	300 (12)	0.41 (0.54)
1.5-1.8m (5'-6") BB	400 (16)	250 (10)	750 (30)	100 (4)	300 (12)	0.41 (0.54)
1.8-2.0m (6'-7")	450 (18)	300 (12)	750 (30)	100 (4)	350 (14)	0.41 (0.54)
1.8-2.0m (6'-7") BB	450 (18)	300 (12)	750 (30)	100 (4)	350 (14)	0.41 (0.54)
2.0-2.4m (7'-8")	500 (20)	275 (11)	750 (30)	100 (4)	325 (13)	0.41 (0.54)
2.0-2.4m (7'-8") BB	500 (20)	275 (11)	750 (30)	100 (4)	325 (13)	0.41 (0.54)
2.4-3.0m (8'-10")	600 (24)	350 (14)	900 (36)	100 (4)	400 (16)	0.47 (0.61)
2.4-3.0m (8'-10") BB	600 (24)	350 (14)	900 (36)	100 (4)	400 (16)	0.47 (0.61)
3.0-3.6m (10'-12")	650 (26)	375 (15)	900 (36)	100 (4)	425 (17)	0.47 (0.61)
3.0-3.6m (10'-12") BB	650 (26)	375 (15)	900 (36)	100 (4)	425 (17)	0.47 (0.61)

LARGE	A	B	C	D	E	F
TREE SIZE	DIAMETER OF BALL OR ROOT SYS.	DEPTH OF HOLE EXCAVATION	WIDTH OF HOLE EXCAVATION	THICKNESS OF MULCH COVER	DEPTH OF BALL OR ROOT SYS.	VOLUME OF MULCH COVER m ³ (CU. YDS.)
0-50 (0-2")	500 (20)	275 (11)	900 (36)	100 (4)	325 (13)	0.47 (0.61)
50-65 (2-2 1/2) BB	600 (24)	350 (14)	1200 (48)	100 (4)	400 (16)	0.60 (0.78)
65-75 (2 1/2-3) BB	700 (28)	425 (17)	1200 (48)	100 (4)	475 (19)	0.60 (0.78)
75-90 (3-3 1/2) BB	800 (32)	425 (17)	1500 (60)	100 (4)	475 (19)	0.73 (0.96)
90-100 (3 1/2-4) BB	900 (36)	500 (20)	1500 (60)	100 (4)	550 (22)	0.73 (0.96)
100-115 (4-4 1/2) BB	1000 (40)	550 (22)	1800 (72)	100 (4)	600 (24)	0.89 (1.16)
115-125 (4 1/2-5) BB	1100 (44)	600 (24)	1800 (72)	100 (4)	650 (26)	0.89 (1.16)
125-140 (5-5 1/2) BB	1200 (48)	675 (27)	2100 (84)	100 (4)	725 (29)	1.06 (1.38)

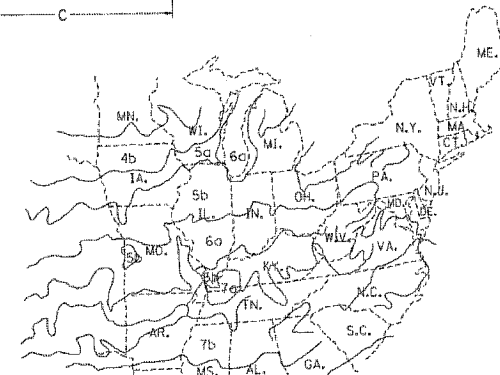


TREES OVER 115 (4 1/2) IN DIAMETER



ALL DIMENSIONS ARE IN MILLIMETERS (INCHES) UNLESS OTHERWISE NOTED.

DETAILS OF PLANTING AND BRACING TREES



PLANT HARDINESS ZONE MAP
 U.S. DEPARTMENT OF AGRICULTURE
 AGRICULTURAL RESEARCH SERVICE
 PUBLICATION NO. 814

WENDLER ENGINEERING SERVICES, INC.
 Structural & Civil Engineers—Land Surveying—Environmental Services
 Illinois Professional Design Firm No. 184-000848

1968 - 2004
36
 YEARS
 WE'RE STILL
 "Turning Ideas...
 ...Into Reality!!!"

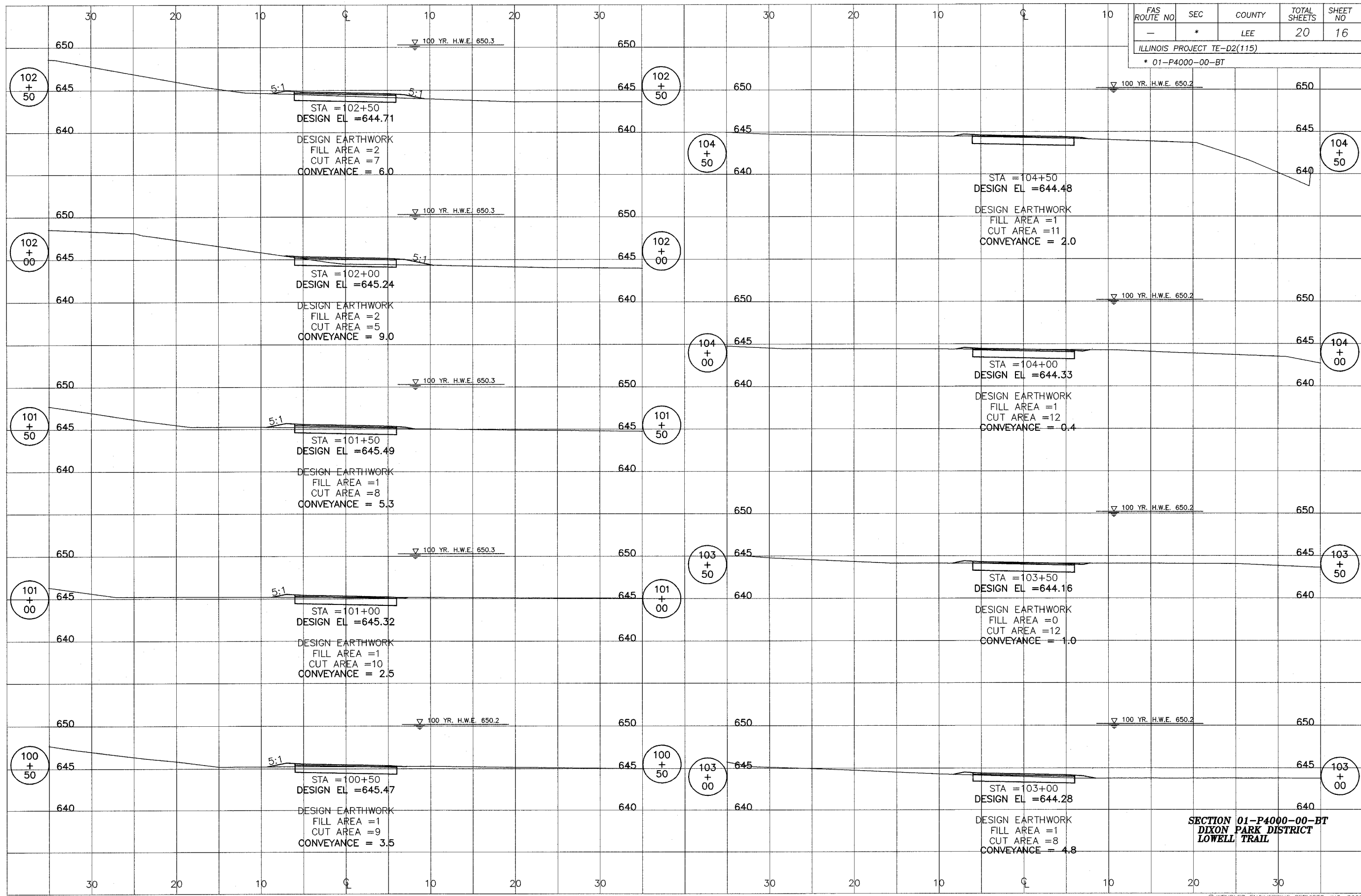
698 TIMBER CREEK ROAD - P.O. BOX 486 - DIXON, IL 61021 - 815-288-2261
 28 E. MARION - SUITE 3 - PRINCETON, IL 61356 - 815-879-4731
 1770 WEST STATE ST. - SYCAMORE, IL 60178 - 815-895-5008
 804 FREEPORT RD. - STERLING, IL 61081 - (815) 626-4428
 E-MAIL: info@wendler.nu

SCALE: 1"=10'

REVISION	DATE	SURVEYED BY	JOB NO.	DRAWN BY	DESIGNED BY
			99022	BDS	
			treeplanting	2/3/2004	

© WENDLER ENGINEERING SERVICES, INC. 2004

SEC. 01-P4000-00-BT
TREE REPLACEMENT PLAN
DIXON PARK DISTRICT



FAS ROUTE NO	SEC	COUNTY	TOTAL SHEETS	SHEET NO
-	*	LEE	20	16

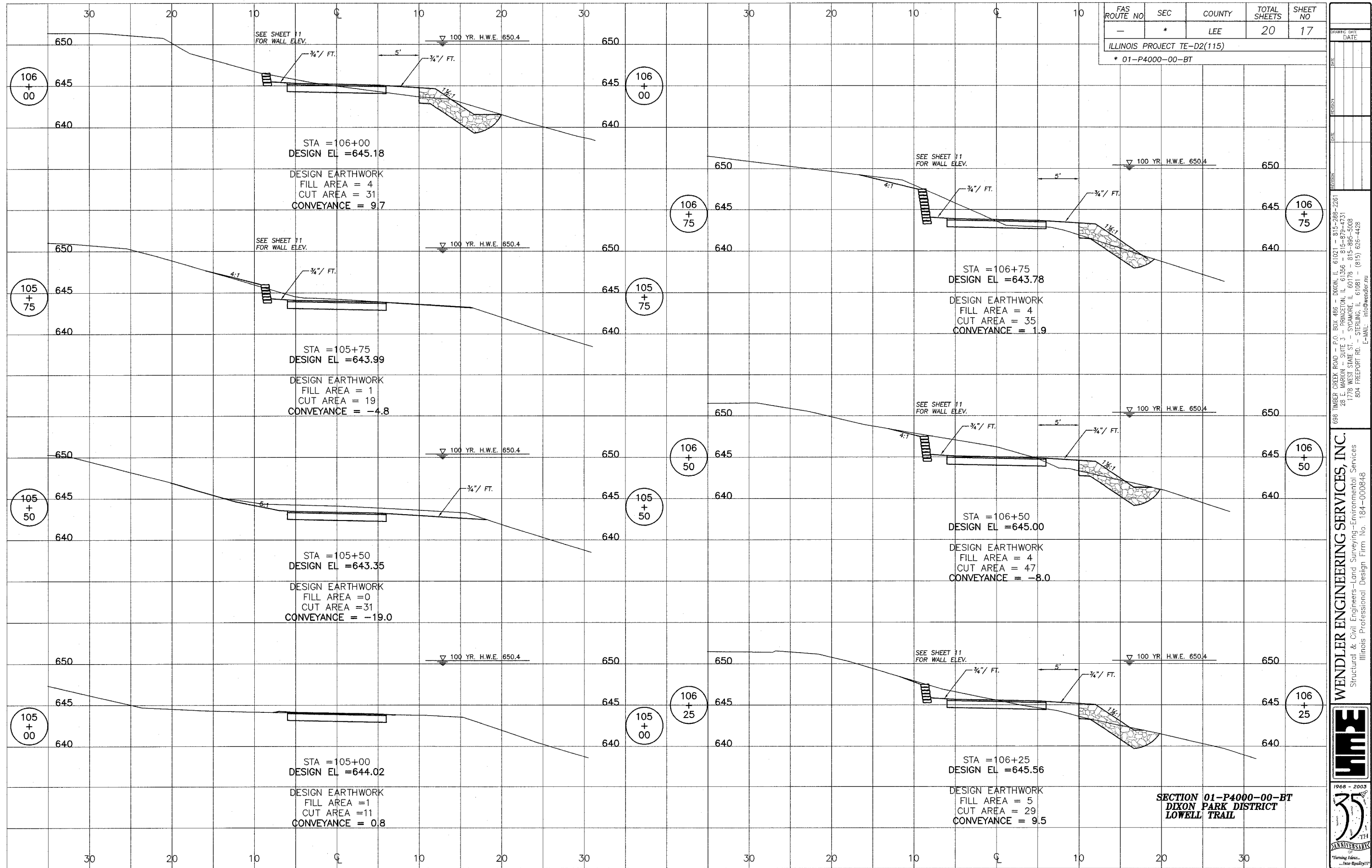
ILLINOIS PROJECT TE-D2(115)
* 01-P4000-00-BT

608 TIMBER CREEK ROAD - P.O. BOX 466 - DIXON, IL 61021 - 815-288-2261
28 E. WARDEN - SUITE 3 - PRINCETON, IL 61356 - 815-879-4731
1778 WEST STATE ST. - SYCAMORE, IL 60178 - 815-895-5008
804 FREEMONT RD. - STERLING, IL 61081 - (815) 626-4428
E-MAIL: info@wendler-inc.com

WENDLER ENGINEERING SERVICES, INC.
Structural & Civil Engineers-Land Surveying-Environmental Services
Illinois Professional Design Firm No. 184-000548

1968 - 2003
35
ANNIVERSARY
of
Surveying Education
... Into the Future

**SECTION 01-P4000-00-BT
DIXON PARK DISTRICT
LOWELL TRAIL**



FAS ROUTE NO	SEC	COUNTY	TOTAL SHEETS	SHEET NO
-	*	LEE	20	17

ILLINOIS PROJECT TE-D2(115)
* 01-P4000-00-BT

DATE: _____
 REVISION: _____
 688 TIMBER CREEK ROAD - P.O. BOX 466 - DIXON, IL 61021 - 815-288-2261
 28 E. MARION - SUITE 3 - PRINCETON, IL 61356 - 815-879-4731
 1778 WEST STATE ST. - SYCAMORE, IL 60178 - 815-895-5008
 804 FREEMONT RD. - STERLING, IL 61081 - (815) 626-4428
 E-MAIL: info@wendler-nu

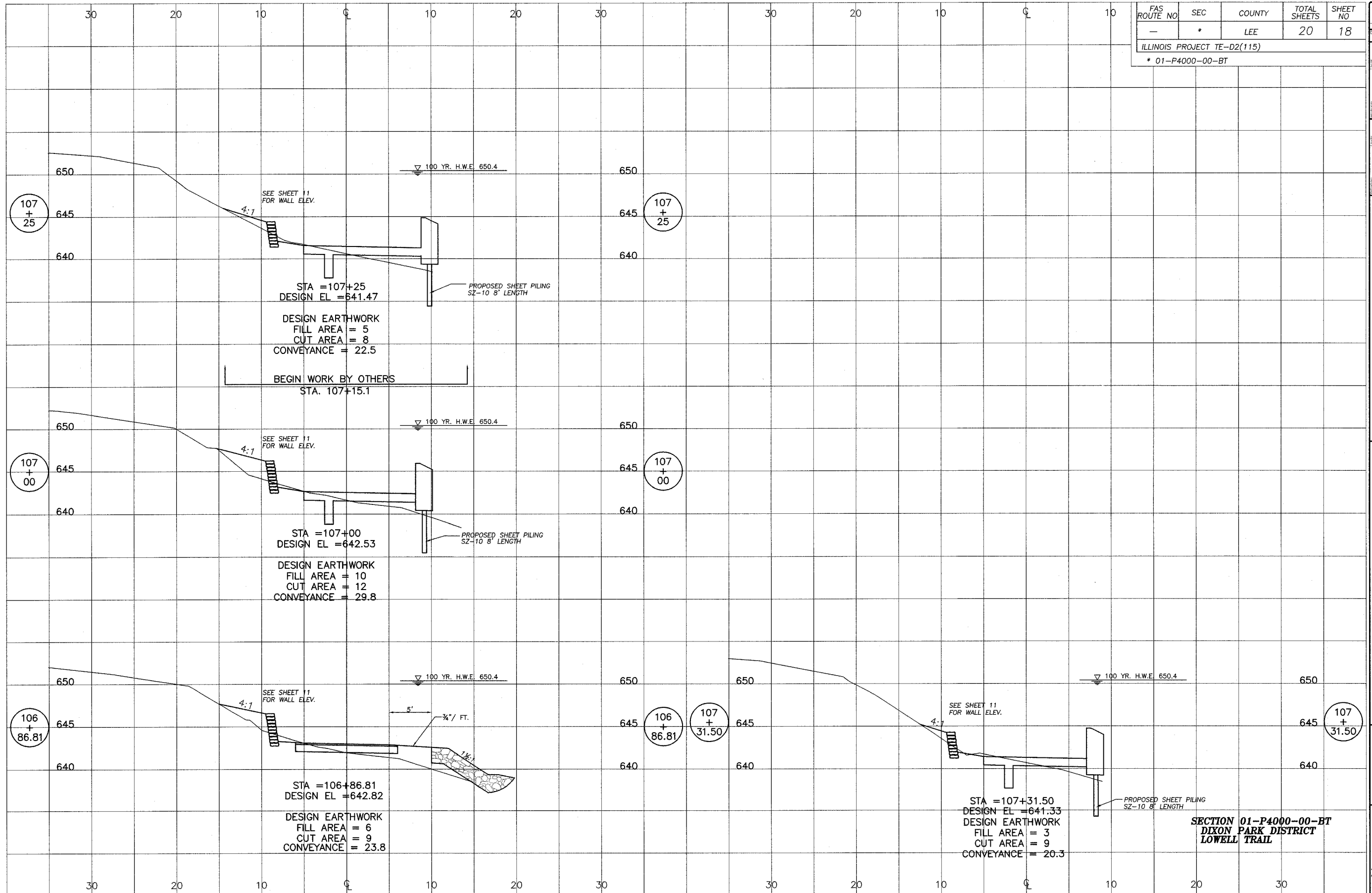
WENDLER ENGINEERING SERVICES, INC.
 Structural & Civil Engineers—Land Surveying—Environmental Services
 Illinois Professional Design Firm No. 184-000848

1968 - 2003

 35th ANNIVERSARY
 Turning Ideas... Into Reality!!!

© WENDLER ENGINEERING SERVICES, INC. 2003

**SECTION 01-P4000-00-BT
 DIXON PARK DISTRICT
 LOWELL TRAIL**



FAS ROUTE NO	SEC	COUNTY	TOTAL SHEETS	SHEET NO
-	*	LEE	20	18

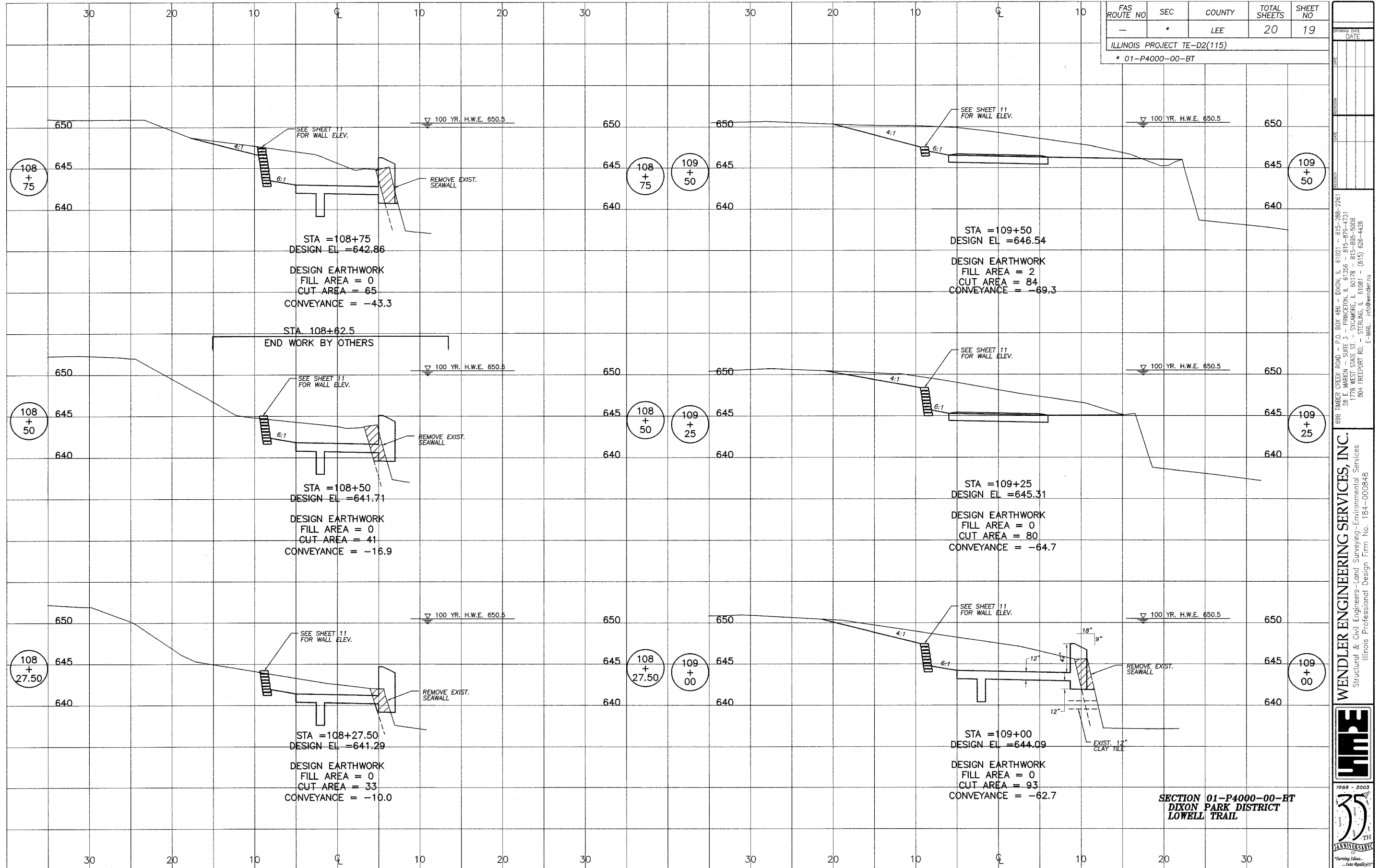
ILLINOIS PROJECT TE-D2(115)
* 01-P4000-00-BT

608 TIMBER CREEK ROAD - P.O. BOX 488 - DIXON, IL 61021 - 815-298-2261
28 E. MARION - SUITE 3 - PRINCETON, IL 61356 - 815-879-4731
1778 WEST STATE ST. - SYCAMORE, IL 60178 - 815-895-5008
804 FREEPORT RD. - STERLING, IL 61081 - (815) 626-4478
E-MAIL: info@wendlerinc.com

WENDLER ENGINEERING SERVICES, INC.
Structural & Civil Engineers-Land Surveying-Environmental Services
Illinois Professional Design Firm No. 184-000848

1968 - 2003
35
ANNIVERSARY
Turning Ideas... Into Reality!

**SECTION 01-P4000-00-BT
DIXON PARK DISTRICT
LOWELL TRAIL**



FAS ROUTE NO.	SEC	COUNTY	TOTAL SHEETS	SHEET NO
-	*	LEE	20	19

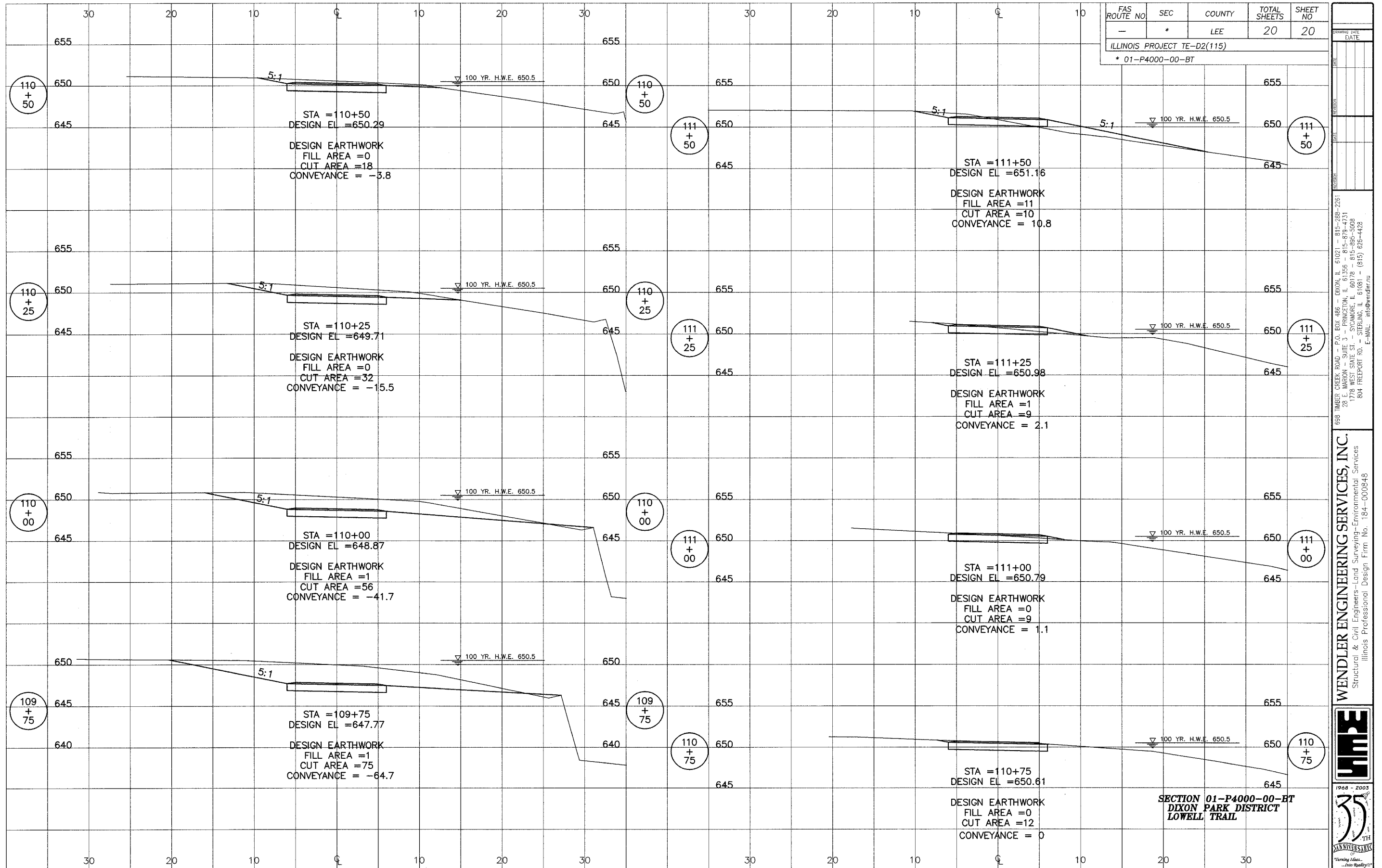
ILLINOIS PROJECT TE-D2(115)
* 01-P4000-00-BT

DATE: _____

698 TIMBER CREEK ROAD - P.O. BOX 486 - DIXON, ILL. 61021 - 815-288-2261
28178 WEST STATE ST. - SYCAMON, ILL. 60174 - 815-305-5048
804 FREEMONT RD. - STERLING, ILL. 61081 - (815) 626-4428
E-MAIL: info@wensler.com

WENDLER ENGINEERING SERVICES, INC.
Structural & Civil Engineers—Land Surveying—Environmental Services
Illinois Professional Design Firm No. 184-000848

WPE
1908 - 2003
35th ANNIVERSARY
"Turning Ideas Into Reality"



FAS ROUTE NO	SEC	COUNTY	TOTAL SHEETS	SHEET NO
-	*	LEE	20	20

ILLINOIS PROJECT TE-D2(115)
* 01-P4000-00-BT

DATE: _____
 REVISION: _____
 658 TIMBER CREEK ROAD - P.O. BOX 488 - DIXON, IL 61021 - 815-288-2261
 28 E. MARION - SUITE 3 - PRINCETON, IL 61356 - 815-879-4731
 1778 WEST STATE ST. - SYCAMORE, IL 60178 - 815-895-5008
 804 FREEPORT RD. - STERLING, IL 61081 - (815) 626-4428
 E-MAIL: info@wendler.net

WENDLER ENGINEERING SERVICES, INC.
 Structural & Civil Engineers—Land Surveying—Environmental Services
 Illinois Professional Design Firm No. 184-000848

1968 - 2003

 35th Anniversary
 "Turning Ideas... Into Reality!"