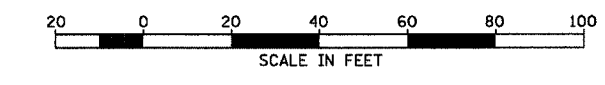
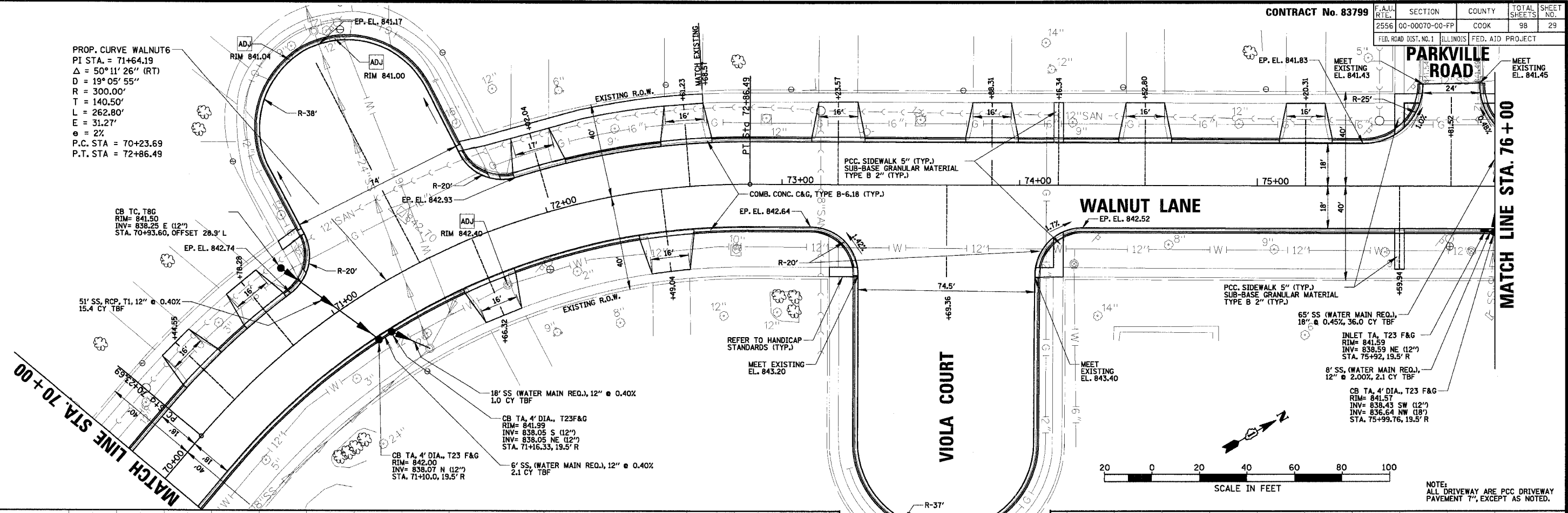
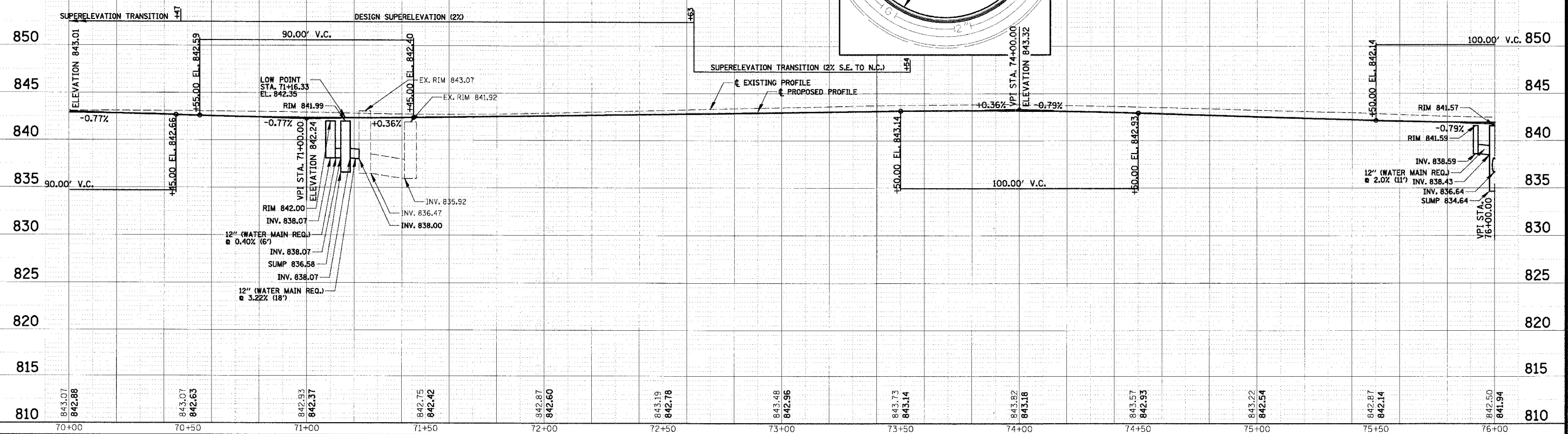


PROP. CURVE WALNUT6
 PI STA. = 71+64.19
 Δ = 50° 11' 26" (RT)
 D = 19° 05' 55"
 R = 300.00'
 L = 140.50'
 E = 31.27'
 e = 2%
 P.C. STA = 70+23.69
 P.T. STA = 72+86.49



NOTE:
 ALL DRIVEWAY ARE PCC DRIVEWAY
 PAVEMENT 7", EXCEPT AS NOTED.



CHRISTOPHER B. BURKE ENGINEERING LTD.
 9575 West Higgins Road, Suite 600
 Rosemont, Illinois 60018
 (847) 823-0500

CLIENT:
VILLAGE OF SCHAUMBURG
 Engineering Department
 101 Schaumburg Court
 Schaumburg, IL. 60193-7806

NO.	DATE	NATURE OF REVISION	CHKD.
1	04/05/2005	DESIGN	GS
2		DRAWING	GS
3		CHECKED	JGS
4		SCALE: 1/4" = 20' HOR. 1/4" = 5' VERT.	
5		DATE: 04/05/2005	

TITLE:
WALNUT LANE PLAN AND PROFILE
STA. 70+00 TO STA. 76+00
C-91-108-04

PROJECT NO.
 01-434
 SHEET 29 OF 98
 DRAWING NO.
29